



Front Door Trim Squeak

Classification	Repair Bulletin	Section/Group	15 - Interior Trim	Country/Region	All
Year	All	Model	Model S	Version	All

Bulletin Classification: *This repair bulletin provides instructions and guidelines for a noted condition or a customer concern. The information provided can address a broad range of known or perceived issues with the operation of Tesla vehicles. This bulletin might not be VIN-specific. These instructions assume knowledge of motor vehicle and high voltage electricity repairs, and should only be executed by trained professionals. Tesla Motors assumes no liability for injury or property damage due to a failure to properly follow these instructions or repairs attempted by unqualified individuals.*

This Service Bulletin supersedes SB-14-15-002 R1, dated 21-March-14. Each content change is marked by a vertical line in the left margin. Discard the previous version and replace it with this one.

Condition

Some customers have noticed a squeaking sound coming from the door trim panel when they rest their arm on the upper trim pad or when the vehicle is driving over a rough surface. Although there is no impact to the vehicle or vehicle system operation and functionality, pressure on the door trim panel or rough roads might cause a squeaking or creaking noise that is noticeable to the customer.

Correction

Upon customer complaint of a squeaking or creaking sound coming from either front door, apply felt tape to the metallic trim and door trim panel, and remove the metal clips attached to the door armrest. Perform this procedure on both front door panels.

Required Part(s):	Part Number	Description	Quantity
	1029042-00-A	FELT TAPE, 210x8x1	6
	1025670-00-A	PUSH NUT ID 7.9MM OD 23.8MM	2
	1025401-00-A	CLIP, HEART FLEX W/ WSHR 70 LBS RETENTION	18

Correction Description	Correction	Time
Vehicle Inspection Only; Felt Tape For Door Trim Squeak Not Required	S011415002	0.3
Apply Felt Tape To Door Trim Panels to Eliminate Squeak	S021415002	1.4

Procedure

1. Remove the front door trim panel (refer to Service Manual procedure 15130201).
2. Place a fender cover, towel, or other soft material on a workbench to protect the door trim panel from damage.
3. Place the door trim panel on the protected surface with the outboard side facing up.

4. Remove the 16 screws that hold the door trim insert in place (torque 3 Nm) (Figure 1).

NOTE: The dotted circles indicate screws that are hidden by the acoustic insulator. To access the screws, lift the insulator up from the door trim insert, gently breaking the heat stake welds that hold the acoustic insulator in place.

⚠ CAUTION: Only lift the acoustic insulator up in the areas needed to access the screws.

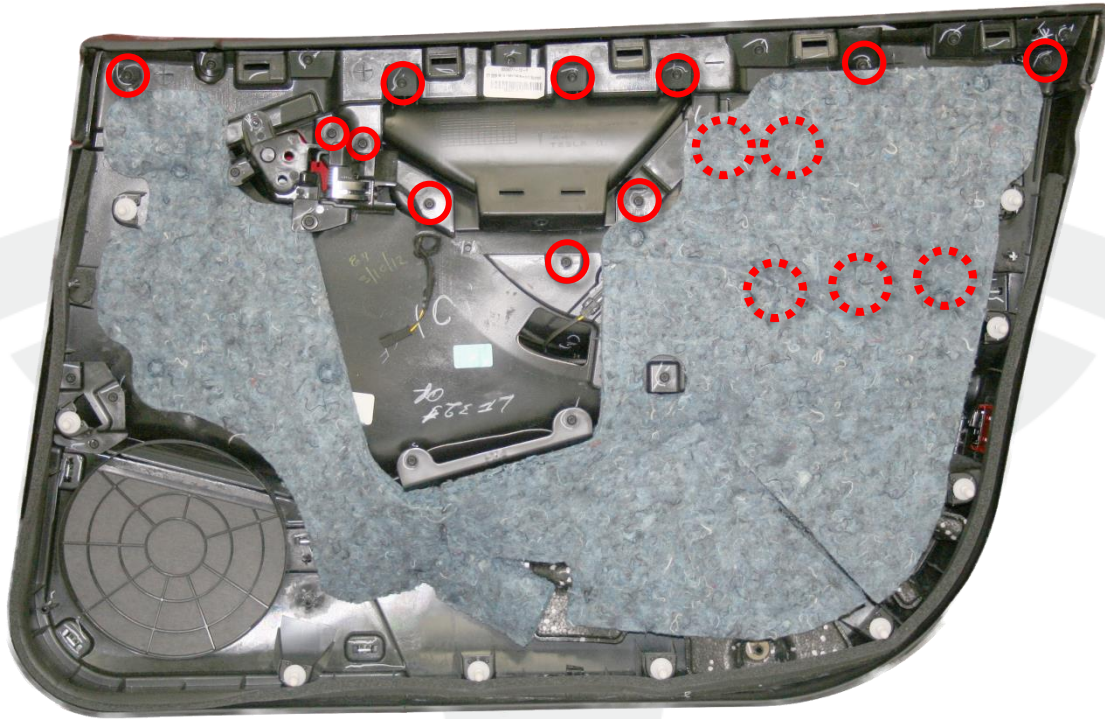


Figure 1

5. Remove the push nut by prying the fingers up with a trim tool or flathead screwdriver until it releases (Figure 2).

⚠ CAUTION: The push nut must be replaced once removed; it is a one-time-use part.



Figure 2

6. If equipped, remove the cable connector for the door armrest ambient light by sliding the connector through the clip. If the connector cannot be unclipped by hand, gently use needle nose pliers to push the connector through the clip. (Figure 3).

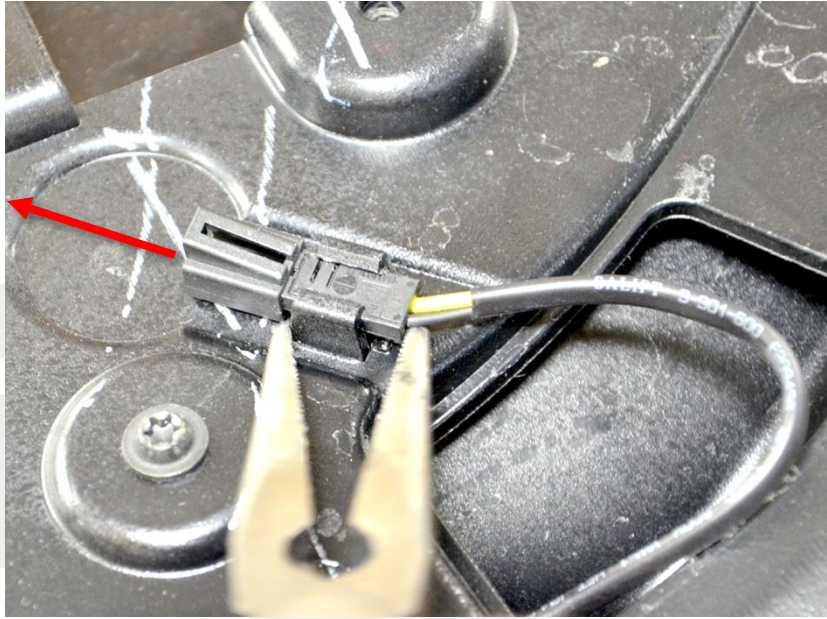


Figure 3

7. Remove the door trim insert (Figure 4). Place the door trim insert on a flat, protected surface with the outboard side facing up.



Figure 4

8. Remove the 4 metal clips from the outboard side of the door trim insert (Figure 5). Do not reinstall the door trim insert with these clips attached.

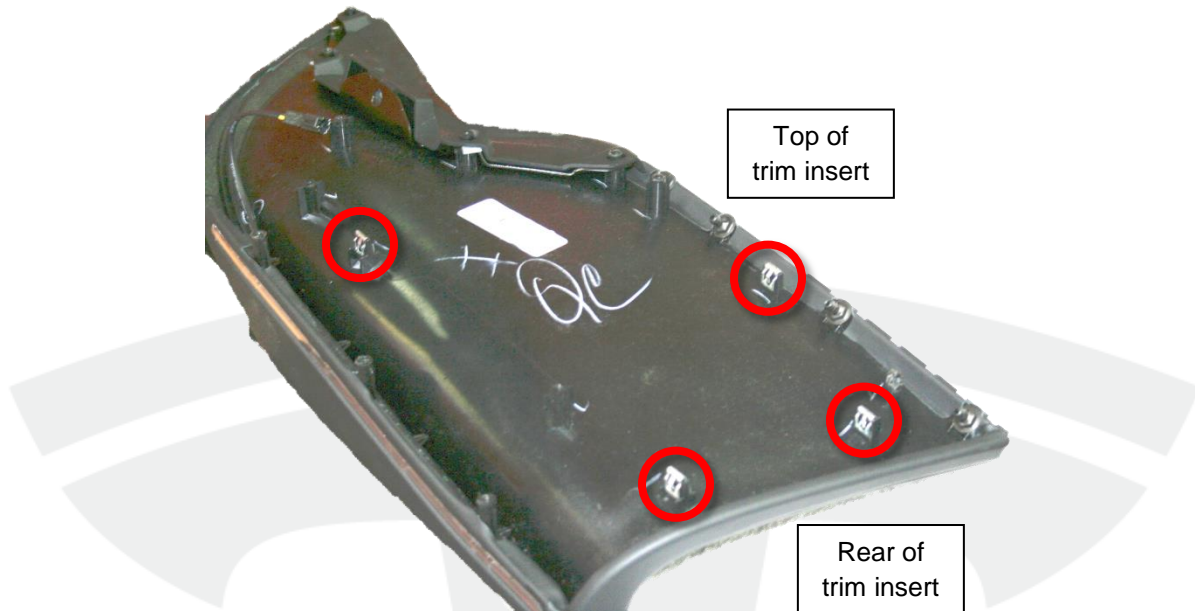


Figure 5

9. Apply a 210 mm strip of felt tape to the top, rear outboard side of the metallic trim on the door trim insert. Place the felt tape in a strip going towards the front of the door trim insert (Figure 6).

NOTE: Maintain at least 1 mm between the felt tape and each edge of the metallic trim so that the felt tape is not visible once the door panel is reinstalled.

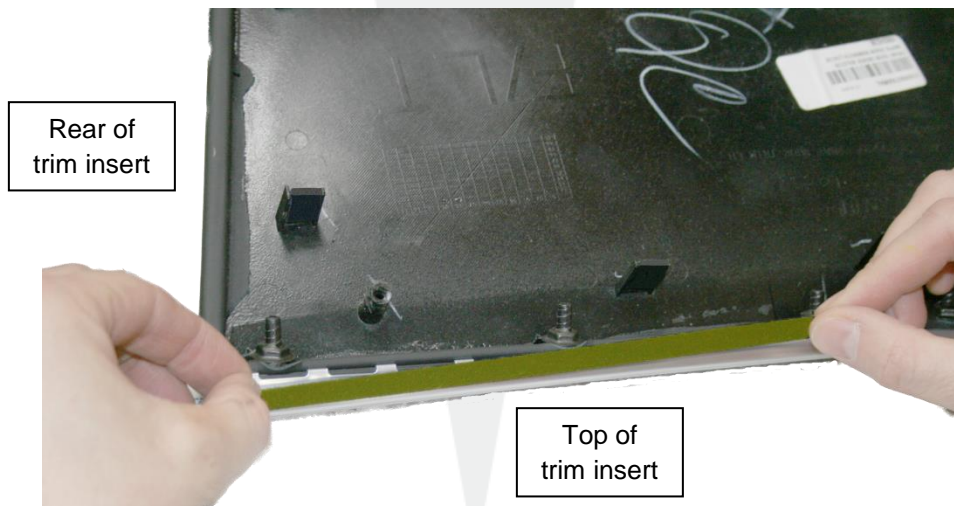


Figure 6 (Felt tape highlighted)

10. Cut a 30 mm strip of felt tape to shape and apply it to the top, front outboard side of the metallic trim on the door trim insert (Figure 7).

NOTE: Maintain at least 1 mm between the felt tape and the outer edge of the metallic trim so that the felt tape is not visible once the door panel is reinstalled.

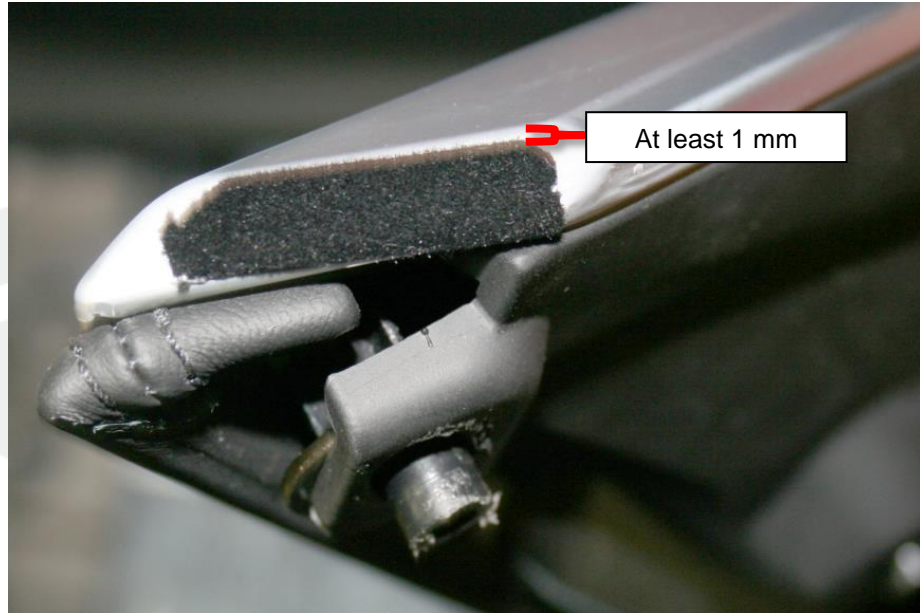


Figure 7

11. Remove the 8 screws that hold the upper trim pad in place (torque 3 Nm) (Figure 8).

NOTE: The dotted circle shows a screw that is hidden by the acoustic insulator. To access the screw, lift the insulator up from the door trim insert, gently breaking the heat stake welds that hold the acoustic insulator in place.

! CAUTION: Only lift the acoustic insulator up in the area needed to access the screw.



Figure 8

12. Remove the upper trim pad and set it aside.

NOTE: The following two steps apply to the top, rear portion of the door trim panel, where the upper trim pad was before removal (Figure 9).

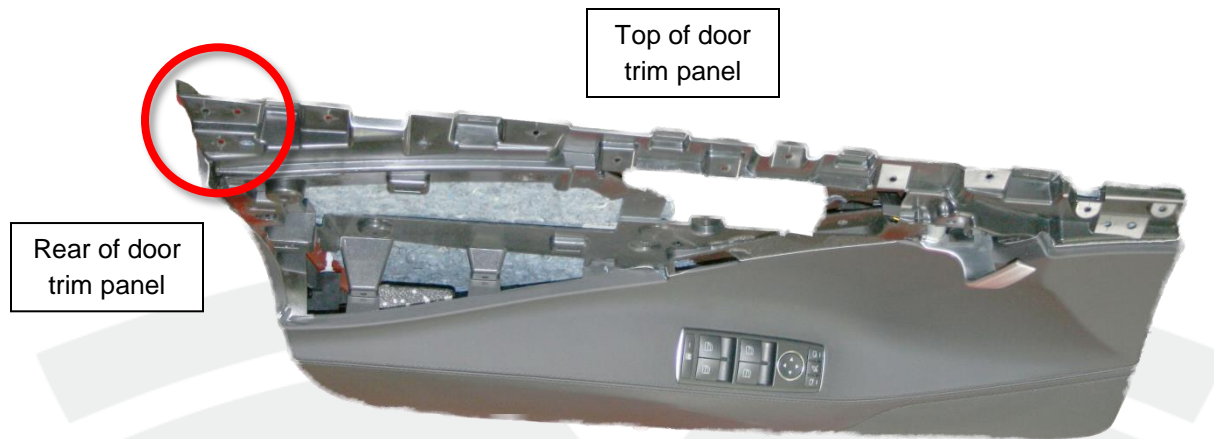


Figure 9

13. Cut a strip of felt tape to 105 mm in length and apply it around the top, rear edge of the door trim panel (Figure 10).



Figure 10 (Felt tape highlighted)

14. Cut 3 35 mm strips of felt tape and apply each strip to the top, rear corner of the door trim panel so that each strip wraps around the edge of the panel and ends near the first hole (Figure 11).

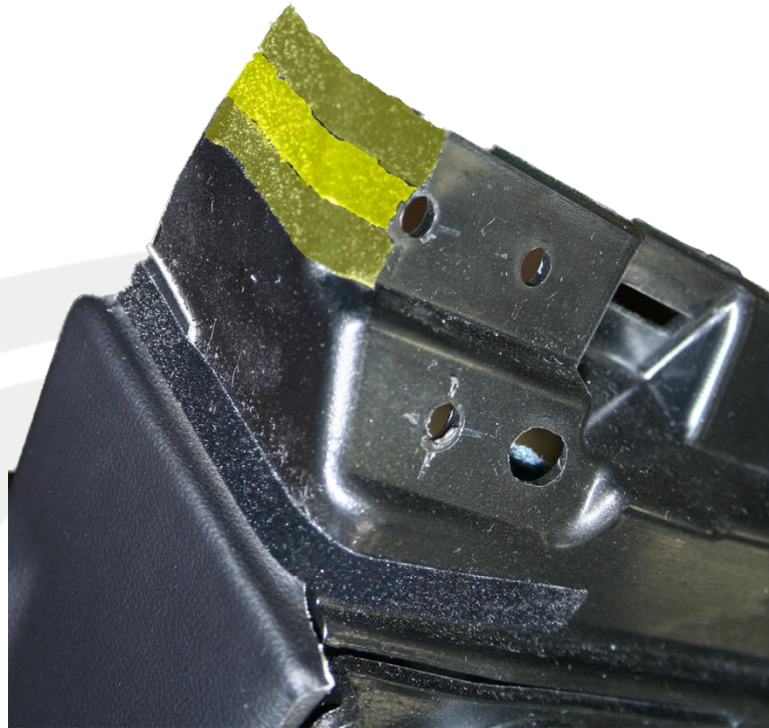


Figure 11 (3 Felt tape strips highlighted)

15. Installation is the reverse of removal with the following exceptions:

- Install the new push nut by using a deep socket to push the push nut over the screw boss until it is fully seated.
- Use hot glue to reinstall the acoustic insulator in areas where the heat stake welds were broken.
- Do not reinstall the 4 clips onto the door trim insert. Refer to step 8 of this procedure.
- Replace all flex heart clips using the latest version before reinstalling the door trim panel; they are one-time use only.
- Ensure that the felt tape strips are not visible once the door trim panel is in place.

Affected VIN(s) This information is for reference purposes only. This list is not intended to be the sole information source for updates.

Affected Model S vehicles built before approximately July 23, 2013.

NOTE: This is a simplified summary of the affected VIN list. Refer to the VIN/Bulletin Tracker or Customer/Vehicle profile to determine applicability of this bulletin for a particular vehicle.

For feedback on the accuracy of this document, email ServiceBulletinFeedback@teslamotors.com.