



Panoramic Roof Bracket Creak

| | | | | | |
|-----------------------|-----------------|----------------------|-----------|-----------------------|--------------------------|
| Classification | Repair Bulletin | Section/Group | 24 - Roof | Country/Region | North America and Europe |
| Year | 2012-2013 | Model | Model S | Version | All |

Bulletin Classification: This repair bulletin provides instructions and guidelines for a noted condition or a customer concern. The information provided can address a broad range of known or perceived issues with the operation of Tesla vehicles. This bulletin might not be VIN-specific. These instructions assume knowledge of motor vehicle and high voltage electrical component repairs, and should only be executed by trained professionals. Tesla Motors assumes no liability for injury or property damage due to a failure to properly follow these instructions or repairs attempted by unqualified individuals.

This Service Bulletin supersedes SB-14-24-001 R2, dated 03-Feb-15. Each content change is marked by a vertical line in the left margin. Discard the previous version and replace it with this one.

Condition

Some vehicles that have panoramic roofs also have a metal bracket underneath the front applique. This bracket holds the panoramic roof latching tab in place when the vehicle is at high speed.

The section of the bracket that mates with the latching tab is covered in flock tape. However, over time as the roof opens and closes, the latching tab might wear away the flock tape (Figure 1).

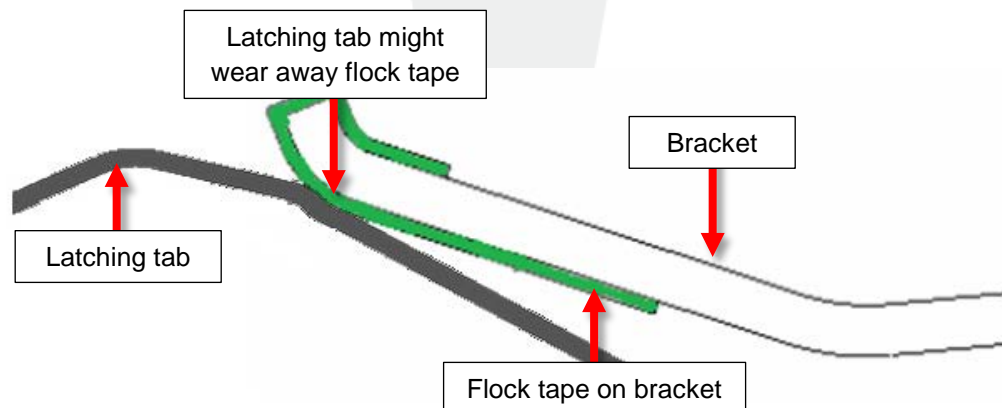


Figure 1 (Cross-section view of bracket and latching tab)

When this happens, it is possible for the latching tab to rub against the metal bracket, which results in a creaking noise. The noise seems to come from the front of the moving glass, and is different from the panoramic roof creak that is described in SB-13-24-004, which seems to come from the rear of the moving glass.

Correction

Upon customer complaint, check for the presence of a metal bracket underneath the front applique. If equipped, ensure that the top of the latching tab is covered in anti-squeak tape.

| Required Part(s): | Part Number | Description | Quantity |
|-------------------|--------------|------------------------------------|----------|
| | 1038607-00-A | 3M ANTI SQUEAK TAPE (Service Only) | 1 |

NOTE: Each roll of tape contains enough material for over 100 cars

These part numbers were current at the time of publication. Use the revisions listed or later, unless otherwise specified in the Parts Manual.

| Correction Description | Correction | Time |
|---|------------|------|
| Vehicle Inspection; No Bracket Present Underneath Front Applique | S011424001 | 0.05 |
| Vehicle Inspection; Tape Already Applied To Latching Tab On Pano Moving Glass Frame | S021424001 | 0.05 |
| Cut And Apply Tape To Latching Tab On Pano Moving Glass Frame | S031424001 | 0.05 |
| SB-14-24-001 Not Applicable | S041424001 | 0.00 |

Procedure

1. Fully open the panoramic moving glass.
2. Look inside the gap in the center of the front car cross seal (Figure 2). Inspect for an e-coated metal bracket that has black flock tape on the rear edge. If no bracket is present, this bulletin does not apply to this vehicle; do not continue this procedure.



Figure 2

3. Inspect the latching tab on the panoramic moving glass:
 - If the latching tab is covered in clear anti-squeak tape that is not peeling and does not appear damaged, this bulletin does not apply to this vehicle; do not continue with this procedure.
 - If the latching tab is covered in clear anti-squeak tape that is peeling or appears damaged, remove as much of the tape as possible without scratching the latch tab. Continue with this procedure.
 - If the latching tab is not covered in clear anti-squeak tape, continue with this procedure.
4. Cut a piece of clear anti-squeak tape approximately 4 in (10.2 cm) long.

5. Cover the entire top of the latching tab with tape. Ensure that the tape is securely affixed to the latching tab.

NOTE: At this point, some tape protrudes over the edges of the latching tab.

6. Trim all excess tape that protrudes over the edges of the latching tab, but ensure that the entire area of the latching tab is covered (Figure 3).

NOTE: Ensure that no tape is visible from inside the vehicle.

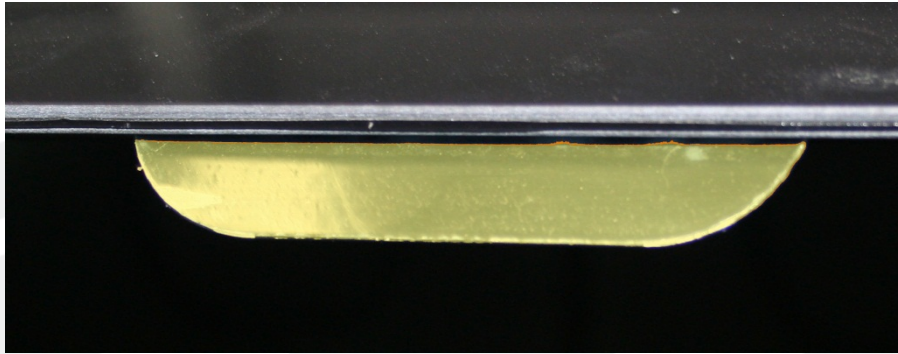


Figure 3

Affected VIN(s) Affected Model S vehicles built through approximately November 17, 2013.

NOTE: This is a simplified summary of the affected VIN list. Refer to the VIN/Bulletin Tracker or Customer/Vehicle profile to determine applicability of this bulletin for a particular vehicle.

For feedback on the accuracy of this document, email ServiceBulletinFeedback@teslamotors.com.