



Replace Radio Antenna Amplifier, Europe

Classification Repair Bulletin **Section/Group** 21 - Infotainment **Country/Region** Europe

Year 2015 **Model** Model S **Version** All

Bulletin Classification: *This repair bulletin provides instructions and guidelines for a noted condition or a customer concern. The information provided can address a broad range of known or perceived issues with the operation of Tesla vehicles. This bulletin might not be VIN-specific. These instructions assume knowledge of motor vehicle and high voltage electrical component repairs, and should only be executed by trained professionals. Tesla Motors assumes no liability for injury or property damage due to a failure to properly follow these instructions or repairs attempted by unqualified individuals.*

Condition

Some European Model S vehicles were built with radio antenna amplifiers that are incapable of playing Digital Audio Broadcasting (DAB) radio.

Correction

Upon customer complaint of DAB radio not working, replace the radio antenna amplifier with one that is capable of playing DAB radio.

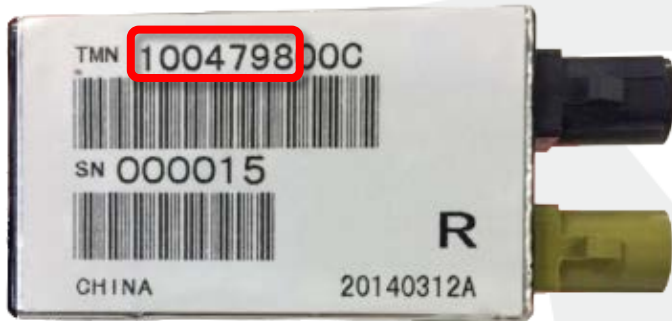
Correction Description	Correction	Time
SB-15-21-006 Not Applicable	S011521006	0.00
Vehicle Inspection Only; Radio Antenna Amplifier Replacement Not Required	S021521006	0.05
Replace Radio Antenna Amplifier, Europe	S031521006	0.10

Required Part(s):	Part Number	Description	Quantity
	1004798-00-C	ANTENNA AMPLIFIER, FM2 DAB-EU APAC	1

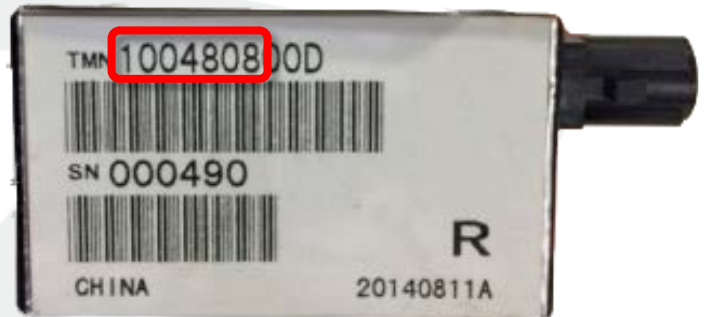
This part number was current at the time of publication. Use the revision listed or later, unless otherwise specified in the Parts Manual.

Procedure

1. Remove the RH liftgate trim (refer to Service Manual procedure 15111702).
2. Inspect the part number on the antenna amplifier:
 - If the base part number is 1004798 (Figure 1), no more work is required; reinstall the RH liftgate trim and discontinue this procedure.
 - If the base part number is anything other than 1004798 (Figure 2), replace the antenna amplifier (refer to Service Manual procedure 21300702).



✓ Figure 1



✗ Figure 2

Affected VIN(s) Affected European Model S vehicles that were built between approximately April 1, 2015 and July 13, 2015.

NOTE: This is a simplified summary of the affected VIN list. Refer to the VIN/Bulletin Tracker or Customer/Vehicle profile to determine applicability of this bulletin for a particular vehicle.

For feedback on the accuracy of this document, email ServiceBulletinFeedback@teslamotors.com.