



Replace Rear Door Hinge Bolts and Inspect Front Seat Belts

Classification	Campaign Bulletin	Section/Group	10 - Body	Country/Region	North America
Year	2017, 2018	Model	Model 3	Version	All

Bulletin Classification: *This campaign bulletin addresses a known non-safety-related condition and provides recommended technical diagnosis and repair procedures. Apply this procedure to all vehicles in the affected VIN range listed. These instructions assume knowledge of motor vehicle and high voltage electrical component repairs, and should only be executed by trained professionals. Tesla assumes no liability for injury or property damage due to a failure to properly follow these instructions or repairs attempted by unqualified individuals.*

Condition

Certain Model 3 vehicles were manufactured with the upper bolt of each rear door lower hinge being longer than necessary. These bolts might rub against the front seat belt retractor spools, leaving a cosmetic mark on the belts. This will not cause belt wear.

Correction

Replace the upper bolt of each rear door lower hinge, paint the bolts, and inspect the vehicle for symptoms related to the condition. If symptoms are present, replace the marked seat belts.

Correction Description	Correction	Time
SB-18-10-003 Not Applicable	S091810003	0.0
Replace Bolts And Inspect Front Seat Belts; No Seat Belt Replacement Necessary	S101810003	1.0
Replace Bolts, Inspect, And Replace Front LH Seat Belt	S111810003	1.0
Replace Bolts, Inspect, And Replace Front RH Seat Belt	S121810003	1.0
Replace Bolts, Inspect, And Replace Both Front Seat Belts	S131810003	1.0

Required Part(s):	Part Number	Description	Quantity
	1063260-00-C	BOLT&WSHR,HX,M8x23.5,STL[109],PTC,ZNNI	2
	If necessary:		
	1081255-01-C	1ST ROW, DRVR RETRACTOR, BLK	1
	1081279-01-E	1ST ROW, PASS RETRACTOR, BLK	1

Shop supplies:

IPA wipes
 Touch-up paint of vehicle color

These part numbers were current at the time of publication. Use the revisions listed or later, unless otherwise specified in the Parts Manual.

Procedure

NOTE: To save time, this procedure inspects and replaces seat belts concurrently with painting hinge bolts.

1. Open the LH and RH front doors.

⚠ CAUTION: Do not open the rear doors.

2. Fully lower the windows.
3. Remove and discard the upper bolt from the LH and RH lower rear door hinges (Figures 1 and 2).

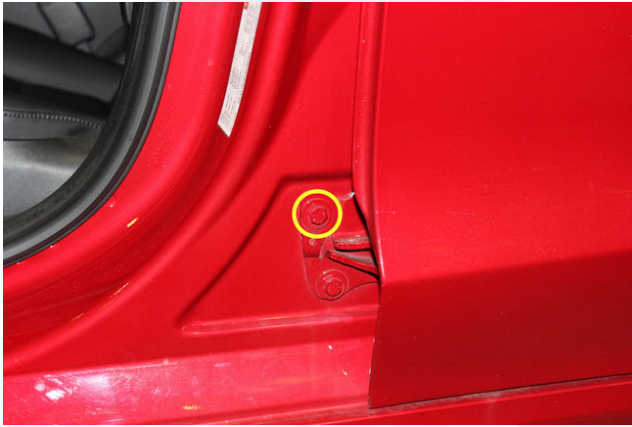


Figure 1 (LH)

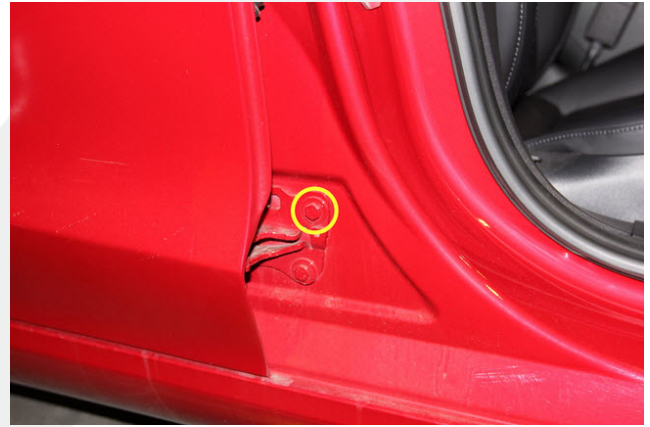


Figure 2 (RH)

4. Install new bolts into the lower rear door hinges (torque 24 Nm)(Figures 3 and 4).



Figure 3 (LH)



Figure 4 (RH)

5. Thoroughly clean the bolt heads, the washers, and the surrounding area with IPA wipes, and allow at least 1 minute to dry.
6. Vigorously shake the touch-up paint applicator for several minutes.

7. Apply a first coat of touch-up paint to the bolt heads and washers, and allow at least 20 minutes to dry (Figures 5 and 6).

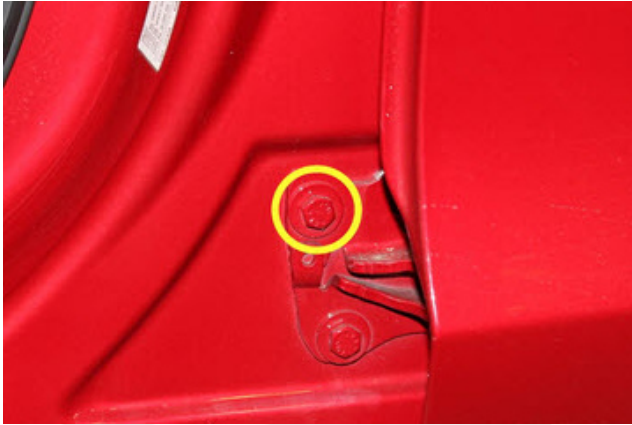


Figure 5 (LH)

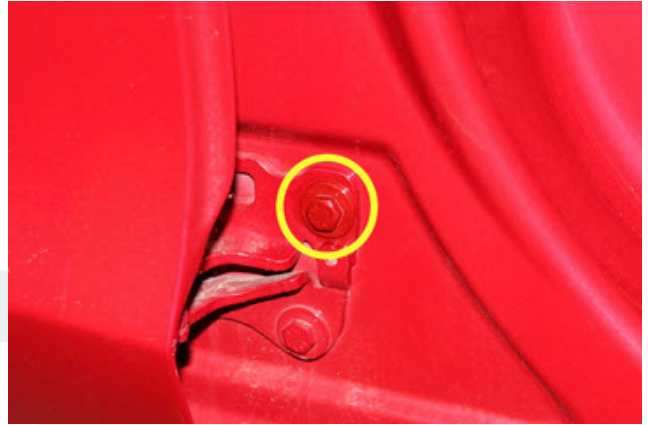


Figure 6 (RH)

8. While waiting for the touch-up paint to dry, inspect the front seat belts.
9. Position the front LH seat belt so that light sheens from its surface (Figure 7).



Figure 7

10. Slowly pull the belt from the B-pillar, and look for any marks on the belt surface (Figure 8).

- If any marks are seen, remove the seat belt (refer to Service Manual procedure 20054102).

NOTE: Do not install the replacement belt at this time.

- If no marks are seen, retract the belt back into the B-pillar, and repeat steps 9 and 10 for the other side of the belt.



Figure 8 (Mark caused by bolt rubbing on belt)

11. Repeat steps 9 and 10 for the front RH seat belt.

12. After at least 20 minutes has elapsed since applying the first coat, vigorously shake the touch-up paint applicator for at least a minute.

13. Apply a second coat of touch-up paint to the bolt heads and washers, and allow at least 20 minutes to dry (Figures 5 and 6).

14. While waiting for the touch-up paint to dry, if necessary, install the new front seat belt(s) (refer to Service Manual procedure 20054102).

15. After at least 20 minutes has elapsed since applying the second coat, vigorously shake the touch-up paint applicator for at least a minute.

16. Apply a third coat of touch-up paint to the bolt heads and washers, and allow at least 20 minutes to dry (Figures 5 and 6).

Affected VIN(s) Affected Model 3 vehicles built before approximately December 1, 2017.

NOTE: This is a simplified summary of the affected VIN list. Refer to the VIN/Bulletin Tracker or Customer/Vehicle profile to determine applicability of this bulletin for a particular vehicle.

For feedback on the accuracy of this document, email ServiceBulletinFeedback@tesla.com.