



Tesla, Inc.
Service Bulletin

Replace Rear Door Striker Plate

SB-19-11-003

August 22, 2019

Classification		Section/Group	Mobile Service*
Campaign Bulletin		11 - Closures	Cannot Perform *Where permitted
Model Year	Model	Country/Region	Version
2017 - 2018	Model 3	All	RWD

The model(s) and model year(s) listed are a general approximation of the affected VIN list. Refer to the VIN/Bulletin Tracker or Customer/Vehicle profile to determine applicability of this bulletin for a particular vehicle.

Campaign Bulletin: This campaign bulletin addresses a known non-safety-related condition and provides recommended technical diagnosis and repair procedures. Apply this procedure to all vehicles in the affected VIN list.

Condition

Some rear door striker plates were manufactured from material that might have allowed striker plate fasteners to be over-torqued during manufacture, potentially causing the striker plate to deform over time and resulting in a clunking noise in the mid C-pillar area when the door closes.

Correction

Inspect the vehicle for symptoms related to the condition. If symptoms are present, replace the LH and RH rear door striker plates with updated striker plates.

Correction Description	Correction	Time
SB-19-11-003 Not Applicable	S011911003	0.00
Inspect Rear Door Striker Plates	S021911003	0.45
Inspect and Replace Rear Door Striker Plates	S031911003	0.85

Part Number	Description	Quantity
Parts Required 1127375-00-D	ASY ALUMINUM STRIKER PLATE ASSEMBLY LH	1
1127376-00-D	ASY ALUMINUM STRIKER PLATE ASSEMBLY RH	1
1085431-00-A	INSTAPAK SMALL	2

These part numbers were current at the time of publication. Use the revisions listed or later, unless otherwise specified in the Parts Catalog.

Shop Supplies Rectangular inspection mirror
Flathead screwdriver
Pick, miniature soft grip 90
Pick, radiator hose soft grip 10.30
Pickup tool
Prybar, short

Procedure

1. Remove the LH rear door striker (refer to Service Manual procedure 11354002).
2. Remove the LH rear wheel arch liner (refer to Service Manual procedure 12011102).
3. Remove the body plug from the front portion of the LH rear wheel arch (Figure 1).



Figure 1

4. Use an inspection mirror and flathead screwdriver to release the expanding foam from the inside of the LH body panel (Figure 2). Remove the foam in pieces until the plastic baffle is accessible (Figure 3).

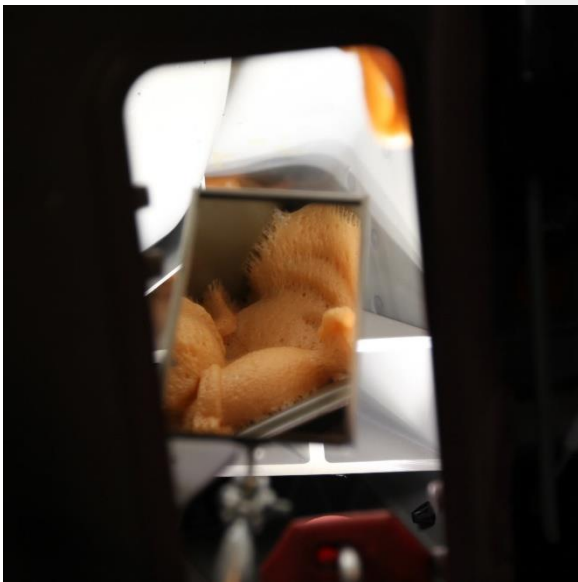


Figure 2

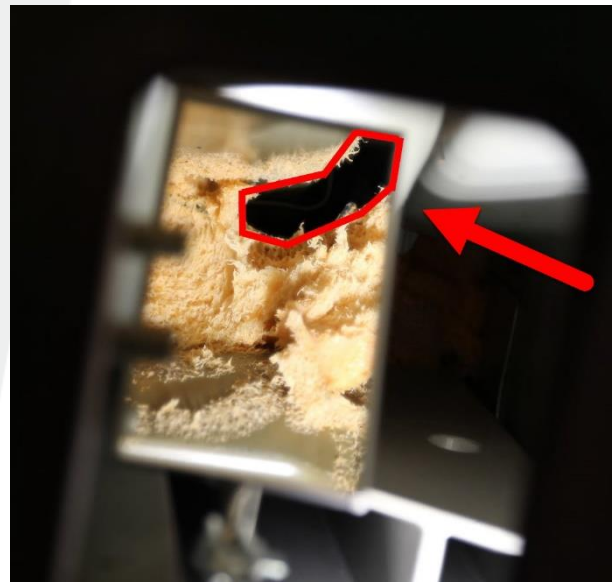


Figure 3

5. Once the plastic baffle is accessible (Figure 3), use needle nose pliers to pull the baffle and remaining foam out of the cavity to expose the LH striker plate. Discard the baffle upon removal.

6. Inspect the LH striker plate (Figure 3):

- If the following attributes are present on the striker plate (“Old”), continue the replacement procedure:
 - 4 pips (1 in each corner)
 - Nuts clearly stamped ‘RIFAST’
 - No visual scribe mark stating “L” or “R”
 - Plate looks thin (1 mm thick)
- If the attributes above are not present (“New”), discontinue the replacement procedure and skip to step 14.



Figure 3 – Old and new striker plates

7. Use a pick tool to bend the lower striker bracket tab so that it is 90 degrees from the body panel (Figure 4 and 5).

TIP: Access the lower striker bracket tab through the body panel access hole in the front portion of the LH rear wheel arch (Figure 1) (components have been removed for clarity in the example below).

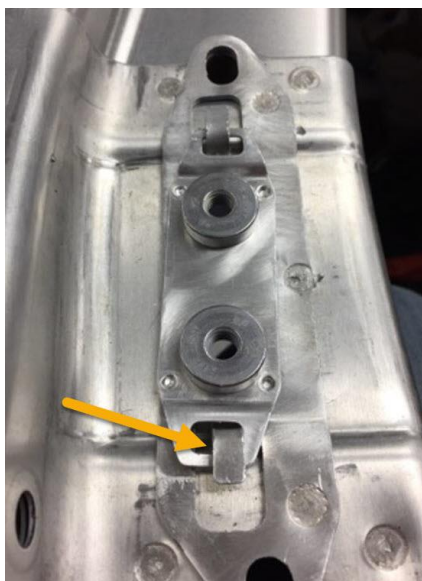


Figure 4



Figure 5

TIP: Access the upper striker bracket tab through the striker bolt mounting holes in the C-pillar (Figure 6).

8. Use a pick tool to bend the upper striker bracket tab slightly (Figure 6), and then lift the striker plate off the upper and lower striker bracket tabs (Figure 7).

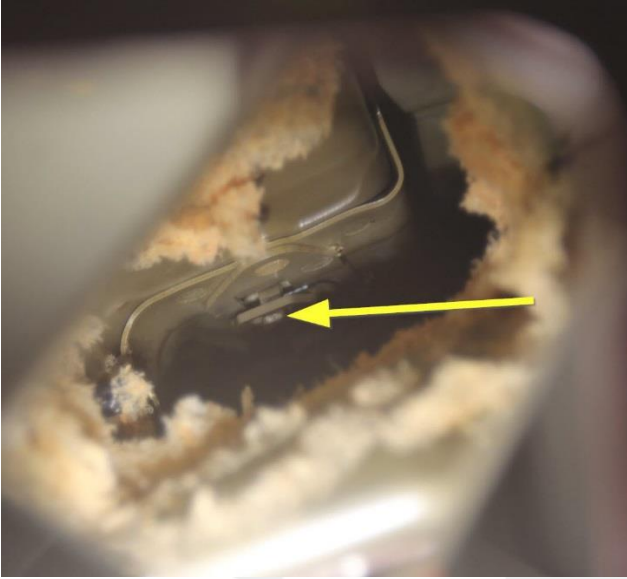


Figure 6



Figure 7

9. Remove the striker plate from the vehicle through the body panel access hole in the front portion of the LH rear wheel arch (Figure 1).
10. Use a pickup tool through the body panel access hole in the front portion of the LH rear wheel arch to seat a new LH striker plate onto the upper striker bracket tab:
 - a. Orient the new striker plate so that the marking hole end is closest to the ground (Figure 8).



Figure 8

- b. Insert the new striker plate up into the body panel access hole (Figure 9), and then guide the new striker plate into position onto the striker bracket tabs from above through the striker bolt mounting holes in the C-pillar (Figure 10).



Figure 9

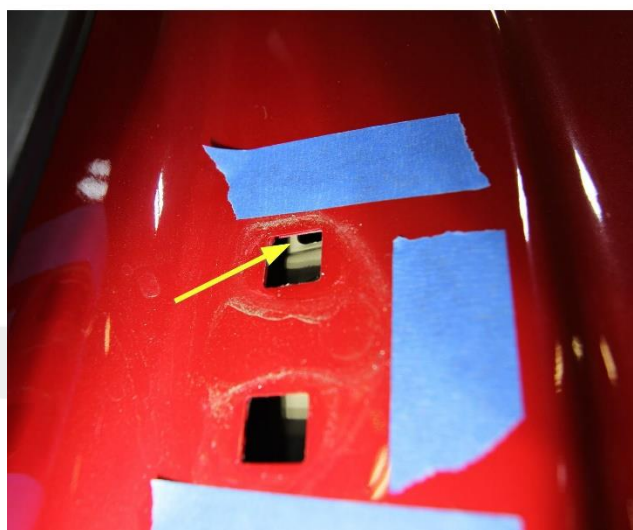


Figure 10

11. Position the LH striker plate onto the lower striker bracket tab, and then partially install the lower striker bolt (x1) to hold the striker plate in place (Figure 11).



Figure 11

12. Secure the new striker plate onto the upper and lower tabs so that the striker plate moves freely in the tabs:
- Insert a short pry bar upward through the body panel access hole in the front portion of the LH rear wheel arch, and then apply pressure on the upper striker bracket tab to bend it back into place to secure the upper portion of the striker plate to the body.
 - Similarly, insert the short pry bar upward through the body panel access hole in the front portion of the LH rear wheel arch, and then apply pressure on the lower striker bracket tab to bend it back into place to secure the lower portion of the striker plate to the body.

13. Verify that the striker plate moves freely in the tabs (Figure 12), and then remove the striker bolt from the striker plate.



Figure 12

14. Remove an Instapak 10 Quick Room Temperature Expanding Foam Packaging Bag from the package and spread it out fully (Figure 13).



Figure 13

15. Push down on location "A" (Figure 14) until a pop sound is heard.

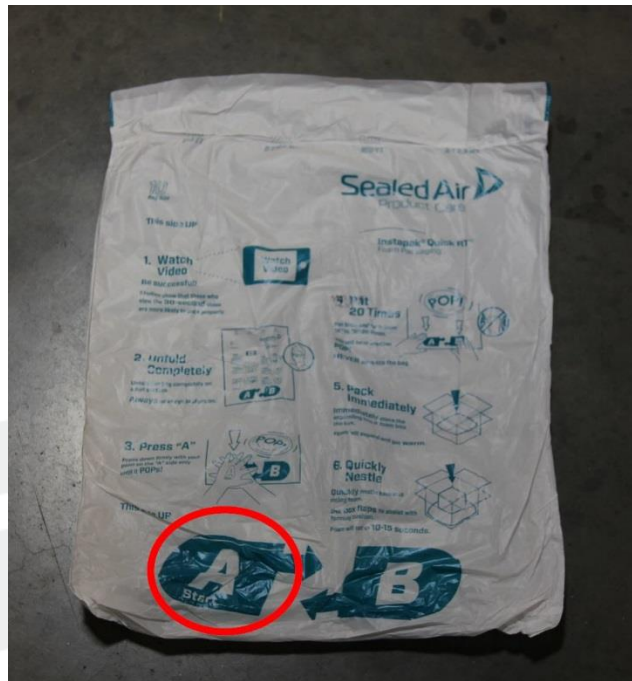


Figure 14

NOTE: The next action must be performed quickly before the foam begins expanding.

16. Alternate pressing on the "A" and "B" locations (approximately 10 times each side) to combine the liquid components (Figure 15), and then immediately insert the Instapak into the LH body cavity and hold it in position as the material expands (Figure 16).

WARNING: The bag will get very warm during expansion.

NOTE: Keep pressure on the Instapak bag until it stops expanding. Do not allow the bag to expand below the body cavity opening.



Figure 15

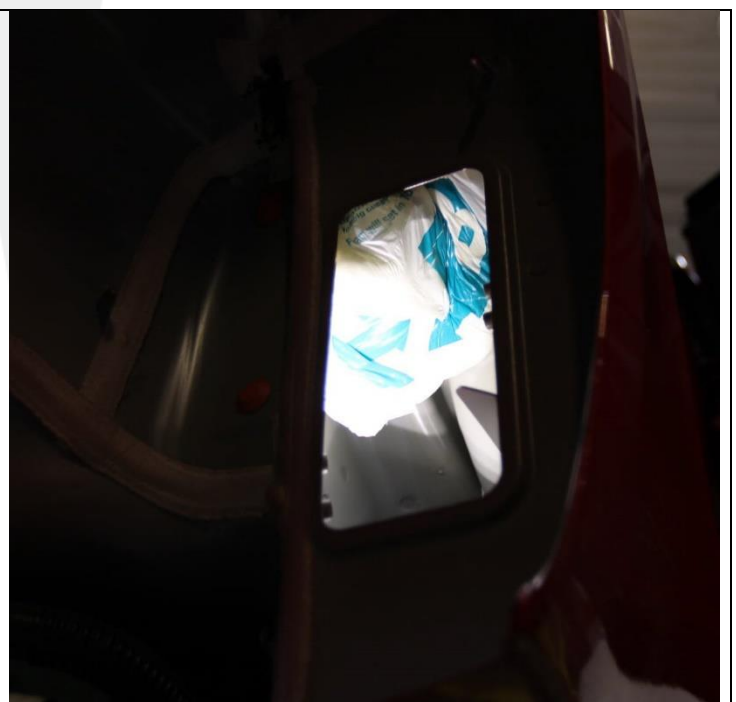


Figure 16

17. Use a mirror to verify that the Instapak has expanded to fill most of the body cavity (Figure 16).
18. Reinstall the LH rear door body cavity plug (Figure 1).
19. Install the LH rear door striker (refer to Service Manual procedure 11354002).
20. Install the LH rear wheel arch liner (refer to Service Manual procedure 12011102).
21. Repeat steps 1 through 20 on the RH side of the vehicle.

