 Tesla, Inc. Service Bulletin		<h2 style="margin: 0;">Install EMI Gasket to Reduce ASR-9 Radar Interference</h2>	
SB-20-17-001 January 02, 2020			
Classification		Section/Group	Mobile Service
Repair Bulletin		17 - Electrical	Model S, Model X (where permitted)
Model Year	Model	Country/Region	Version
2016 - 2019	Model S, Model X, and Model 3	All	All
<small>The model(s) and model year(s) listed are a general approximation of the affected VIN list. Refer to the VIN/Bulletin Tracker or Customer/Vehicle profile to determine applicability of this bulletin for a particular vehicle.</small>			


Repair Bulletin: This repair bulletin provides instructions on addressing a noted condition or possible customer concern regarding the operation of Tesla vehicles. These instructions should only be performed by trained professionals.

Condition

When some Autopilot HW2 and HW2.5 Model S, Model X, and Model 3 vehicles are near airport ASR-9 radar antennae, the vehicle cameras might be affected by electromagnetic interference, and Autopilot/camera alerts might be displayed.

Correction

Upon customer complaint of Autopilot/camera alerts near airports, install an EMI gasket on the Autopilot ECU (Model S and Model X) or car computer (Model 3).

 **NOTE:** This bulletin applies only to the vehicles on the affected VIN list. Vehicles not on the affected VIN list are not affected by this condition.

Correction Description	Correction	Time
SB-20-17-001 Not Applicable	S012017001	0.00
Install EMI Gasket To Reduce ASR-9 Radar Interference, Model S	S022017001	0.35
Install EMI Gasket To Reduce ASR-9 Radar Interference, Model X	S032017001	0.55
Install EMI Gasket To Reduce ASR-9 Radar Interference, Model 3	S042017001	1.15

	Part Number	Description	Quantity
Parts Required	1546563-00-B	EMI.GASKET,CAR.COMP.SERVICE	1
Additional Parts for Model S and Model X	1012845-00-A	NUT,HEX-FLNG,M5X.8,STL,ZNC,NYLOCK	4
Additional Parts for Model 3	2007104-00-B	NUT,HF,M8x1.25,[10] G1409,LOCK	4
	1116594-00-B	BOLT,EHS,M6x19,[88],ZN,SMAT,ADH	4

These part numbers were current at the time of publication. Use the revisions listed or later, unless otherwise specified in the [Parts Catalog](#).

Special Tools 1504492-00-A M3 Car Computer Coolant Plug (2) (Model 3)

Shop Supplies Absorbent pads

Procedure

1. Use Tesladex or Diag Mode to determine if the vehicle has set at least one of the following alerts:
 - **APP_w269_autopilotLimited:** Lane Departure Avoidance limited. Features may be restored on next drive.
 - **APP_w270_blindspotRestricted:** Blindspot detection limited. Camera visibility reduced.
 - **APP_w264_IssFault:** Autopilot safety/convenience features unavailable. Features may be restored on next drive.
2. After checking with Tesladex or Diag Mode, if:
 - None of these alerts are set, then this bulletin does not apply. Discontinue this procedure.
 - At least one of the alerts are set, continue to the next step.
3. Ask the customer if the set alerts were displayed near an airport. If the customer replies that:
 - None of the set alerts were displayed near an airport, then this bulletin does not apply. Discontinue this procedure.
 - At least one of the set alerts was displayed near an airport, continue to the next step.
4. Remove the Autopilot ECU (Model S and Model X) or car computer (Model 3):
 - Model S (refer to Service Manual procedure 17155202)
 - Model X (refer to Service Manual procedure 17155202)
 - Model 3 (refer to Service Manual procedure 21151002)
5. Fold the EMI gasket along its length to create a crease (Figure 1).

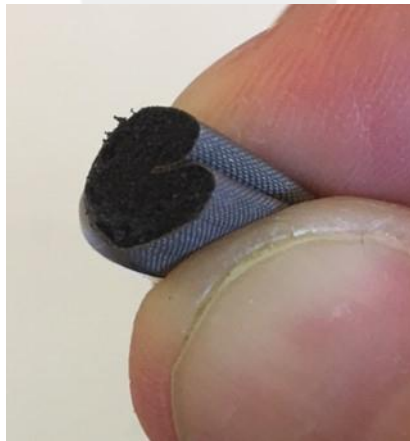


Figure 1

6. Use a plastic trim tool to press the gasket into the gap above the camera connectors of the Autopilot ECU (Model S and Model X) (Figure 2) or car computer (Model 3) (Figure 3).

NOTE: Make sure that the gasket material contacts the metal shielding on the camera connectors and the underside of the metal housing.

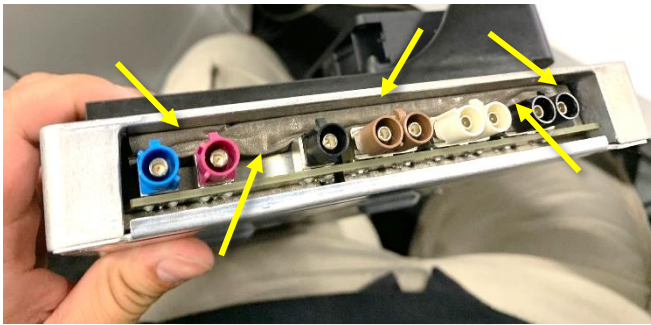


Figure 2 – Model S and Model X Autopilot ECU

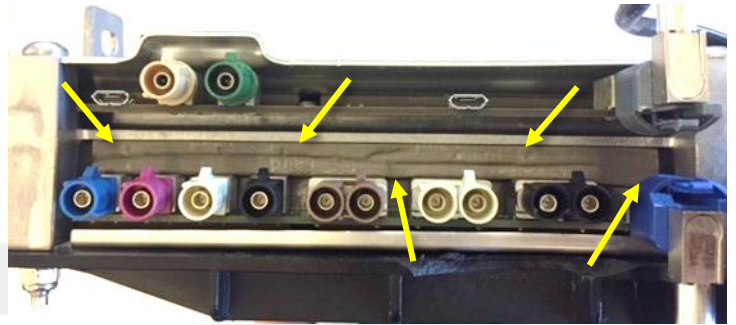


Figure 3 – Model 3 Car Computer

7. Install the Autopilot ECU (Model S and Model X) or car computer (Model 3):
 - Model S (refer to Service Manual procedure 17155202)
 - Model X (refer to Service Manual procedure 17155202)
 - Model 3 (refer to Service Manual procedure 21151002)