 Tesla, Inc. Service Bulletin		<h2 style="margin: 0;">Inspect 2nd Row Seatbelt Bolts</h2>	
SB-21-20-002 May 27, 2021			
Classification Recall Bulletin		Section/Group 20 - Safety and Restraint	Mobile Service Can Perform (where permitted)
Model Year 2019 - 2021	Model Model Y	Country/Region North America	Version All
<small>The model(s) and model year(s) listed are a general approximation of the affected VIN list. Refer to the VIN/Bulletin Tracker or Customer/Vehicle profile to determine applicability of this bulletin for a particular vehicle.</small>			

Recall Bulletin: Recall Bulletins are mandatory service procedures that must be carried out by Tesla-certified Service Centers. Recall work performed by uncertified technicians could lead to unsafe conditions or voided warranty provisions.

Condition

Some Model Y LH or RH 2nd row seatbelt retractor bolts may have been cross-threaded upon installation.

Correction


Inspect the vehicle for symptoms related to the condition. If symptoms are present, replace the LH and/or RH 2nd row seatbelt retractor bolt(s) and weld nut(s).

Correction Description	Correction	Time
Inspect 2nd Row Seatbelts, No Repairs Needed	S012120002	0.30
Inspect 2nd Row Seatbelts, Resecure LH 2nd Row Seatbelt	S022120002	0.35
Inspect 2nd Row Seatbelts, Resecure RH 2nd Row Seatbelt	S032120002	0.35
Inspect 2nd Row Seatbelts, Replace LH Weld Nut	S042120002	0.40
Inspect 2nd Row Seatbelts, Replace RH Weld Nut	S052120002	0.40
Inspect 2nd Row Seatbelts, Resecure LH And RH 2nd Row Seatbelts	S062120002	0.45
Inspect 2nd Row Seatbelts, Resecure LH 2nd Row Seatbelt And Replace RH Weld Nut	S072120002	0.50
Inspect 2nd Row Seatbelts, Resecure RH 2nd Row Seatbelt And Replace LH Weld Nut	S082120002	0.50
Inspect 2nd Row Seatbelts, Replace LH And RH Weld Nuts	S092120002	0.55

	Part Number	Description	Quantity
If Necessary	1556123-00-A	BOLT,PN,M10-1.5x30,[109],G1009,PC,A02	1-2
	1454548-00-A	NUT,HF,M10-1.5,[10],G0110	1-2
<small>These part numbers were current at the time of publication. Use the revisions listed or later, unless otherwise specified in the Parts Catalog.</small>			
Special Tools	1115199-00-A	HAMMER, DEAD BLOW, 48OZ	

Procedure

1. Disconnect 12V power (refer to Service Manual procedure [17010200](#)).
2. Release the LH upper C-Pillar trim from the vehicle, and then set it aside (refer to Service Manual procedure [15186002](#)).

 **NOTE:** Do not release the seatbelt from the C-Pillar trim.

3. Wiggle the LH 2nd row seatbelt retractor and inspect for a gap between the retractor and the body.
 - If the retractor does not wiggle and is tight against the body (Figure 1), the retractor bolt and weld nut do not require inspection; torque the bolt (torque 30 Nm), take note, and then skip to step 20.
 - If the retractor wiggles or is not tight against the body (Figure 2), the retractor bolt and weld nut require inspection; take note and continue to step 4.

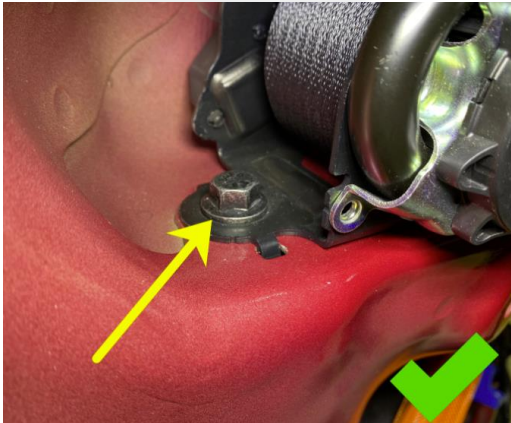


Figure 1 – LH shown; RH similar



Figure 2 – LH shown; RH similar

4. Release the locking tab, and then disconnect the electrical harness from the LH 2nd row seatbelt retractor (Figure 3).



Figure 3 – LH shown; RH similar

5. Remove the bolt that attaches the LH 2nd row seatbelt retractor to the body (torque 30 Nm) (Figure 4).



Figure 4 – LH shown; RH similar

6. Remove the LH 2nd row seatbelt retractor from the vehicle and inspect the retractor bolt (Figure 5) and weld nut threads (Figure 6).



Figure 5 – LH shown; RH similar



Figure 6 – LH shown; RH similar

- If the bolt or nut threads are damaged, repair is necessary. Take note and skip to step 7.
- If the bolt **and** nut threads are undamaged, repair is not necessary. Reinstall parts by performing steps 5 and 4 in reverse order, and then skip to step 20.

7. Hold the LH 2nd row seatbelt retractor captive washer (yellow arrow, Figure 7) in place with vise grips, and then remove the bolt from the retractor. Set the bolt aside if the seatbelt retractor weld nut threads (Figure 6) are damaged; otherwise, discard the bolt.

 **NOTE:** The washer may be discarded and does not need replacement.



Figure 7 – LH shown; RH similar

8. Position a new bolt on the LH 2nd row seatbelt retractor.
9. Proceed depending on the condition of the weld nut:
 - If the weld nut is undamaged, skip to step 16.
 - If the weld nut is damaged, continue to step 10.
10. Disconnect the electrical harness from the TPMS ECU (Figure 8).



Figure 8

11. Slide the TPMS ECU towards the front of the vehicle to release it, and then remove the TPMS ECU from the vehicle.
12. Loosely install the old retractor bolt on the LH 2nd row seatbelt retractor weld nut (Figure 9).



Figure 9 – LH shown; RH similar

13. Hold the retractor bolt with vise grips (Figure 10), and then use the vise grips to dislodge the weld nut from the body.

TIP: Use a deadblow hammer if unable to dislodge the weld nut with vise grips.



Figure 10 – LH shown; RH similar

14. Remove the bolt and weld nut from the vehicle, and then discard them.

15. Using a 13 mm socket, hold a new nut in position under the LH 2nd row seatbelt mounting point (Figure 11).

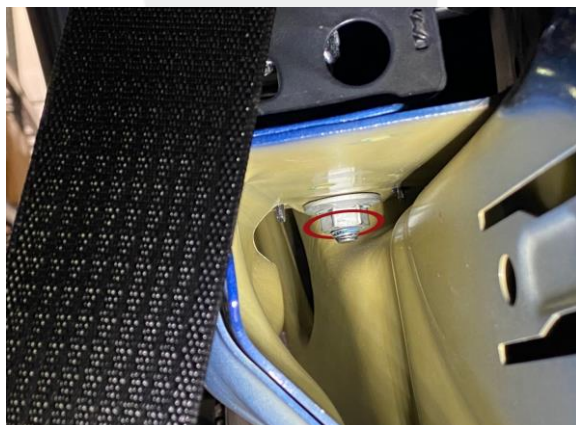


Figure 11 – LH shown; RH similar

16. Install the LH 2nd row retractor with a new bolt (torque 30 Nm) (Figure 4).

17. If removed, position the TPMS ECU on the vehicle, and then slide the TPMS ECU towards the rear of the vehicle to install it (Figure 12).

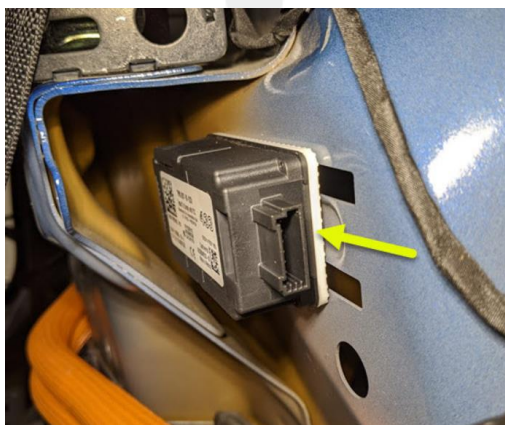


Figure 12

18. If disconnected, connect the electrical harness on the TPMS ECU (Figure 8).

19. Connect the electrical harness on the LH 2nd row seatbelt retractor (Figure 3).
20. Repeat steps 2–19 for the RH 2nd row seatbelt, and after returning to this step, continue to step 21.

 **NOTE:** There is no TPMS ECU on the RH side of the vehicle.

21. Install all components that were removed for access (refer to Service Manual procedure [15186002](#)).
22. Connect 12V power (refer to Service Manual procedure [17010200](#)).

