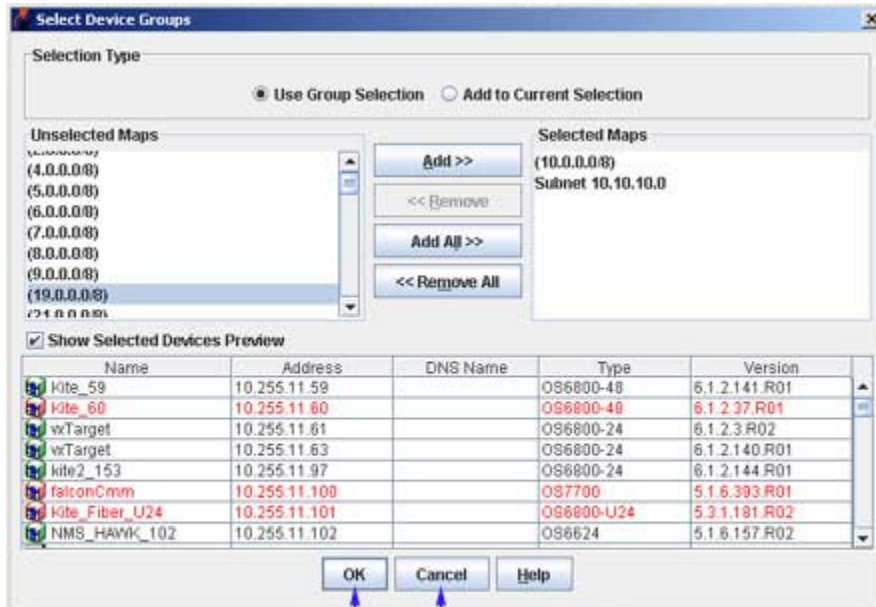


Select Device Groups Window

Use **Select Device Groups** window to select groups of devices using one or more Physical or Logical (user-defined) maps.



Click **OK** to select new maps.

Click **Cancel** to cancel changes.

Adding a New Device Group

1. The Select Device Groups window has two radio buttons: **Use Group Selection** and **Add to Current Selection**. Select either of the two radio buttons.

If you select **Add to Current Selection**, then eventually the devices corresponding to the desired maps are selected, in addition to the devices already selected.

If you select **Use Group Selection**, then eventually any previous selection is ignored and the devices in the Selected Maps list are selected. Note that **Use Group Selection** is selected by default.

2. Move the desired maps from the **Unselected Maps** list to the **Selected Maps** list using the **Add>>**, **Remove<<**, **Add All>>**, and **<<Remove All** buttons.

3. Check the **Show Selected Devices Preview** check box to preview the device table displaying devices for the selected map present in the **Selected Maps** list.

4. Click the **OK** button to apply the changes.

Note: The devices displayed for a group may depend on the particular context. If devices are selected using the **Select Devices using Groups** icon located at the top-right corner of the devices table, then all the devices visible to you will be selected. If the same group is selected in another context, it may select only a partial set.