



# Read Me First

Important information about using your  
*College in Mind?* CD-ROM discs






## Before You Use Your CD-ROM Discs

To work properly, some of the CD-ROM discs in this package require a copy of the disc's application program on your computer's hard disk or changes to some of your computer's settings. Before you insert a CD-ROM disc, follow the steps on the front and back of this card, and then refer to the table below.

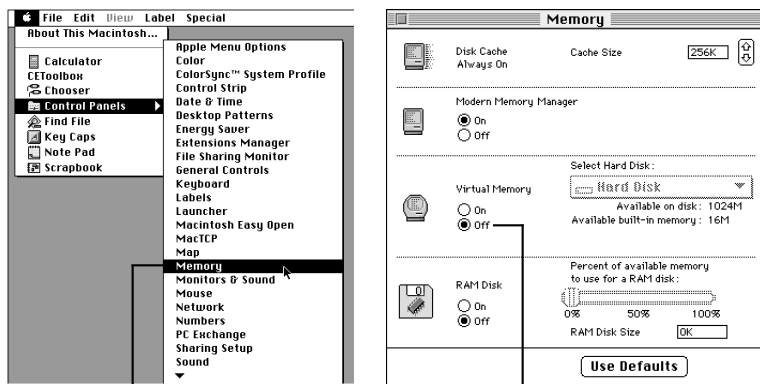
### 1 Turn off virtual memory.

Most of the CD-ROM discs in this package require a computer feature called *virtual memory* to be turned off. Virtual memory converts a portion of your computer's hard disk space into extra random-access memory (RAM) and is often used when people need more memory to run applications. However, virtual memory is not compatible with all applications.

Before using the CD-ROM discs in this package, make sure you have virtual memory turned off.

CD-ROM disc	To get started
<p>Correct Grammar</p>  <p>Correct Grammar Install</p>	<p>Double-click the Installer icon on the CD-ROM disc. When installation is complete, double-click the Correct Grammar application icon in the Correct Grammar folder on your hard disk to use the program.</p>
<p>Expresso</p>  <p>Expresso for Power PC</p>	<p>Double-click the installer icon in the Expresso for Power PC folder on the CD-ROM disc. When installation is complete, double-click the Expresso application icon in the Expresso folder on your hard disk to use the program. <i>Note:</i> When you first start the program, you'll be asked for a serial number. You can find the serial number on the Expresso registration card or in Expresso's electronic manual.</p>
<p>Infopedia</p>  <p>Install Infopedia 2.0</p>	<p>Double-click the Installer icon on the CD-ROM disc. When installation is complete, double-click the Infopedia application icon in the Infopedia folder on your hard disk to use the program.</p>

To turn virtual memory off, do this:



1 Choose the Memory Control Panel from the Apple (Apple) menu.

2 Click here to turn off virtual memory, if it isn't off already.

### CD-ROM disc

### To get started

Inside the SAT



Double-click the Installer icon on the CD-ROM disc. When installation is complete, double-click the Inside the SAT application icon in the Inside the SAT folder on your hard disk to use the program.

Monarch Notes



Double-click the DISCPASS.2\_1 application icon on the CD-ROM disc to use the program.

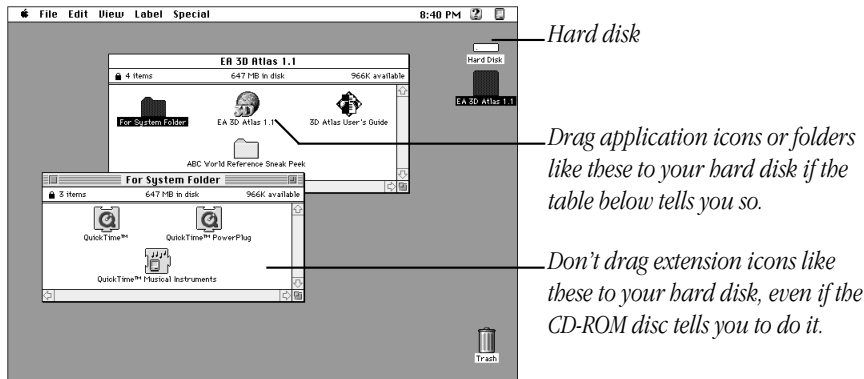
ResumeMaker  
Deluxe



Drag the ResumeMaker Deluxe CD folder from the CD-ROM disc to your hard disk to copy the folder there. When it's finished copying, double-click the ResumeMaker Deluxe application icon in the ResumeMaker Deluxe CD folder on your hard disk to use the program.

## 2 Copy only appropriate items from CD-ROM discs.

Don't copy extensions such as QuickTime. Refer to the table below for specific instructions on what to copy. Here are examples of what you might copy and what you shouldn't copy.



continued ►

### CD-ROM disc

### To get started

U.S. News  
Getting into College



Getting Into College Installer

**Important:** First set your screen to 256 colors by following the instructions on the reverse side of this card. Then double-click the Installer icon on the CD-ROM disc. When installation is complete and your computer restarts, double-click the Getting Into College application icon in the Getting Into College folder on your hard disk to use the program.

You Don't Know Jack



Double-Click-Me to Install Jack

Double-click the Installer icon on the CD-ROM disc. When installation is complete, double-click the You Don't Know Jack application icon in the You Don't Know Jack! folder on your hard disk to use the program.

- Don't drag items such as QuickTime, Sound Manager, or System Folder Files to your hard disk. If you do, you may be replacing your computer's current versions of these files with outdated ones from the CD-ROM disc. (It's okay if some installers install these for you.)
- Never drag an entire CD-ROM disc icon to your hard disk. Copying the CD-ROM disc itself will take up most or all of the space on your hard disk.
- You don't have to copy or install a program every time you insert a CD-ROM disc, only the first time. Also, most CD-ROM discs require you to leave the disc in the drive, even after you've copied the disc's program to your hard disk and are viewing it from there.

3 Insert the CD-ROM disc you want to use.

If you don't know how to insert or eject a CD-ROM disc, see the user's manual that came with your Macintosh computer for instructions.

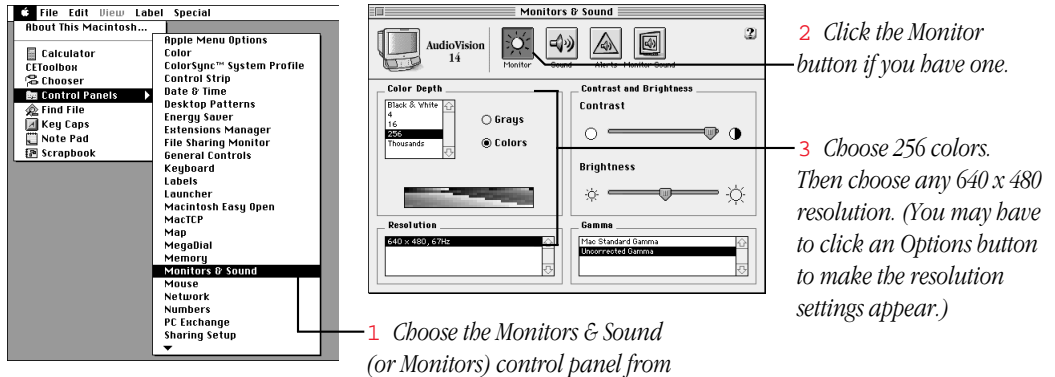
**Note:** A very few CD-ROM disc labels have artwork that can cause the disc's weight to be slightly off-center when it rotates in the drive and cause some computer models to vibrate. If you can feel or hear that the CD-ROM disc is vibrating in the computer, you don't need to do anything special; the vibration damages neither the computer nor the disc itself.

4 Refer to the table on the reverse side of this card.

**Important:** This table has important information about using the CD-ROM discs in this package, including special installation instructions.

## Setting your screen to 256 colors

Some CD-ROM discs require you to set your computer screen to 256 colors. To set the screen to 256 colors, do the following:



## Who to call if you have trouble

If you have trouble with any of the CD-ROM discs in this package, contact the appropriate publisher:

CD-ROM disc	Publisher	Phone number
Correct Grammar	Softkey	423-670-2020
Expresso	Berkeley Systems	510-549-2300
Infopedia	Softkey	423-670-2020
Inside the SAT	Princeton Review	800-546-2102
Monarch Notes	Thynx	201-808-2700
Resume Maker Deluxe	Individual Software	800-331-3313
U.S. News Getting Into College	Creative Multimedia	503-241-1530
You Don't Know Jack	Berkeley Systems	510-549-2300

If you have a problem you think is related to your computer and not to an application on a CD-ROM disc, see your Macintosh user's manual for help.