



Macintosh

# Korean Input Method Guide

.....  
*Macintosh* 파워 입력기 사용 안내서

🍏 Apple Computer, Inc.

© 1996 Apple Computer, Inc.

1 Infinite Loop

Cupertino, CA 95014-2084

(408) 996-1010

Apple, the Apple logo, LaserWriter, Macintosh, Power Macintosh, QuickDraw, TrueType, and WorldScript are trademarks of Apple Computer, Inc., registered in the U.S. and other countries. KanjiTalk is a trademark of Apple Computer, Inc.

ExposurePro is a registered trademark of Baseline Publishing, Inc.

ITC Zapf Dingbats is a registered trademark of International Typeface Corporation.

MacPaint is a registered trademark of Claris Corporation.

QuarkXPress is a registered trademark of Quark, Inc.

Simultaneously published in the United States and Canada.

Mention of third-party products is for informational purposes only and constitutes neither an endorsement nor a recommendation. Apple assumes no responsibility with regard to the performance or use of these products.



# Contents



## **Preface**    **vii**

About this guide    vii

    How to use this guide    viii

About the Korean writing system    viii

## **1 Introduction to Power Input Method**    **1**

About Power Input Method    1

Entering text    2

    Starting Power Input Method    2

    About input modes    2

    Choosing an input mode    3

    Entering Korean text    4

    Entering Roman-based text    7

    Entering Hiragana and Katakana text    8

    Converting to Hanja    11

    Entering symbols    16

    Editing entered text    19

Special input tips    20

## **2 Power Input Method Menus, Dialog Boxes, and Windows 21**

Keyboards menu	22
Pencil menu	23
Operation palette	25
Controlling the operation palette	26
Symbol palette	27
Selecting the symbol table	27
Symbol palette commands	27
Hanja conversion palette	28
Hanja conversion palette commands	29
Hanja Dictionary Utility	30
Input window	31
Selecting a font for the input window	31
Help	32

## **3 Using the Hanja Dictionary Utility 33**

Hanja Dictionary Utility files	34
Starting the Hanja Dictionary Utility	34
Finding a Hanja word	35
Adding a Hanja word to the dictionary	36
Changing a Hanja word	39
Deleting a Hanja word	42

<b>Appendix A</b>	<b>Code Table for Roman Characters</b>	<b>43</b>
<b>Appendix B</b>	<b>Code Range for Hangul, Hanja, and Symbol Characters</b>	<b>45</b>
<b>Appendix C</b>	<b>Korean Keyboard Layouts and Romaja Tables</b>	<b>47</b>
<b>Appendix D</b>	<b>Extended Symbol Table</b>	<b>49</b>
<b>Appendix E</b>	<b>Numeric Codes for Symbol Characters</b>	<b>55</b>
<b>Appendix F</b>	<b>Korean Standard Code Table (KS C 5601)</b>	<b>65</b>
<b>Appendix G</b>	<b>Hiragana and Katakana Phonetic Transliteration Table</b>	<b>67</b>
	<b>Index</b>	<b>69</b>





## Preface



### About this guide

This guide teaches you how to enter and process Korean on your Macintosh computer using Power Input Method, the input utility included with the Korean Language Kit. Follow the instructions in this guide to learn how to

- use basic methods
- change input modes
- use advanced features
- use input utilities

An input utility, or front-end processor, acts somewhat like an interactive spelling checker, intercepting all keyboard input. When used with a standard U.S. keyboard, a Korean input utility looks up the Hangul and Hanja characters that correspond phonetically to the Roman letters that you type. A Korean input utility allows you to use a standard keyboard to access 2350 Hangul characters and 4888 Hanja characters.

Many Korean input utilities use a method similar to the one described in this guide. This guide, however, is specifically for Power Input Method. If you intend to use another Korean input utility, be sure to read its accompanying documentation.

## How to use this guide

### If you are new to the Macintosh

This guide assumes that you are familiar with Macintosh operating conventions. If you are new to the Macintosh, please refer to your *Macintosh User's Guide*.

### If you have used Korean on the Macintosh

Apple's Power Input Method provides many features that previous Apple input utilities did not offer. This guide introduces you to the new features and options.

### Korean terms used in this guide

This guide assumes that you are familiar with Korean. For a chart of romanized pronunciations of Hangul characters, refer to Appendix C, "Korean Keyboard Layouts and Romaja Tables."

## About the Korean writing system

The Korean writing system is based on Hangul—a phonetic alphabet with 14 consonants and 10 vowels. By combining these characters, which are called *jamo*, you can create up to 11,172 Korean characters. The Hangul character set was invented by King Sejong in 1443 in order to create a writing system that is unique to Korea and that can logically represent the Korean language. In addition to Hangul, the system also uses a set of Hanja (ideographic Chinese characters) for special purposes, such as family names, business names, and formal invitations.





# 1

## Introduction to Power Input Method



### *About Power Input Method*

This chapter provides instructions on how to use Power Input Method to enter Korean text. Power Input Method's main function is to convert phonetic Korean into the correct Hangul or Hanja characters. This input method includes

- two standard Korean and two Romaja input modes
- a Hanja dictionary and a dictionary utility that enable you to convert characters as well as create your own user-defined set of Hanja. For more information on the Hanja Dictionary utility, see Chapter 3.

The Installer application automatically places files that are necessary to use Power Input Method in your System Folder and Apple Extras folder. For information about these files, please refer to the *Installing and Getting Started* manual that came with your Korean Language Kit.

## Entering text


This section shows you how to use Power Input Method to enter Hangul, English, Hiragana, Katakana, and Hanja text and symbols. The examples in this chapter show inline input and input-window methods of entering text.

SimpleText Korean is a simple text processor included with your Korean Language Kit. You can use SimpleText Korean (or your Korean word processor) to follow the examples provided in this chapter.

To open SimpleText Korean, double-click the SimpleText Korean icon or select the icon and choose Open from the File menu.

Power Input Method can be used with both localized applications and applications that support WorldScript, in addition to SimpleText Korean.

## Starting Power Input Method

To use Power Input Method, choose  from the Keyboards menu, on the upper right of your screen.

If you install other Korean input utilities, their names will also appear in the Keyboards menu.



## About input modes

Power Input Method offers eight input modes:

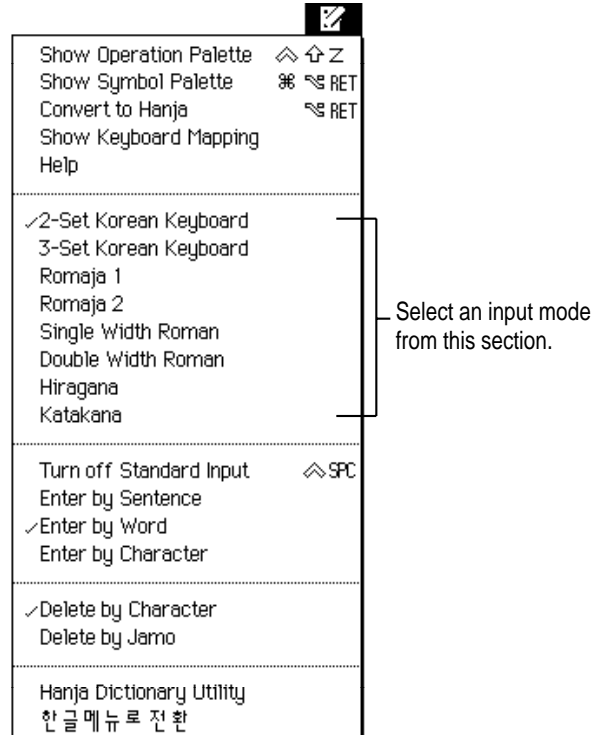
- 2-set Korean Keyboard

A Korean standard keyboard layout, which places consonants on the left side and vowels on the right side.

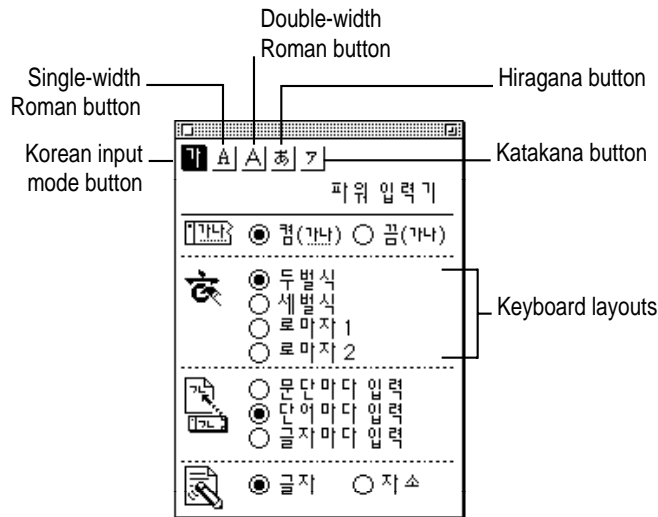
- 3-set Korean Keyboard  
A Korean keyboard layout optimized for speed typists.
- Romaja Input 1  
The Korean government standard Romaja transliterated keyboard.
- Romaja Input 2  
A Romaja transliterated keyboard, based on a popular Korean word processor.
- Single Width Roman
- Double Width Roman
- Hiragana
- Katakana

### Choosing an input mode

You choose input modes from the Pencil menu, next to the keyboards menu. The selected method is indicated with a checkmark in the Pencil menu and highlighted in the operation palette.



You can also select input modes from the operation palette. This palette appears on your desktop when you choose Show Operation Palette from the Pencil menu.

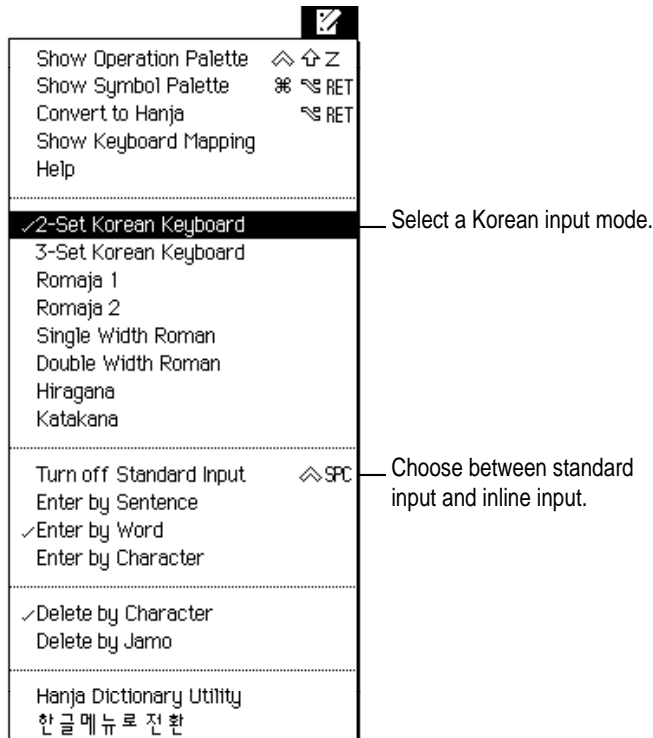


## Entering Korean text

To enter Korean text, you first choose a Korean input mode.

- 1 If you cannot read Korean, choose Show Menu in English from the Pencil menu.
- 2 Choose a Korean input mode.

Power Input Method offers four Korean input modes when using standard input: 2-set Korean Keyboard, 3-set Korean Keyboard, and two Romaja input modes. Each input mode maps keystrokes differently to the Korean alphabet. Use the input mode that is most comfortable for you. Most non-native speakers and students of Korean prefer one of the Romaja input modes.



## Using standard input

To use standard input:

- 1 Choose Turn on Standard Input from the Pencil menu or click the **◆** (Turn on Standard Input) button in the operation palette. If you don't see this command in the Pencil menu, it means that standard input has already been selected.
- 2 Enter a Korean character **◆**:
  - If you chose 2-set Korean Keyboard, type rkd (◆)
  - If you chose 3-set Korean Keyboard, type kfa (◆)
  - If you chose Romaja 1, type gang (◆)
  - If you chose Romaja 2, type gax (◆)

See Appendix C, "Korean Keyboard Layouts and Romaja Tables," for 2-set and 3-set keyboard layouts and Romaja tables for Romaja 1 and Romaja 2.

### Specifying the input unit in standard input

When you use standard input, you enter and convert text according to the default method provided with your application. In some applications, text is entered directly into the document (called *inline input*). In other applications, an input window appears when you begin typing.

If your application uses an input window, you can specify when text is transferred from the input window to your document by choosing the input unit from the operation palette.

- “Enter by sentence” transfers text to your document when you press the Return key.
- “Enter by word” transfers text to your document when you press the Space bar or the Return key.
- “Enter by character” transfers text to your document whenever you complete a Korean character.




If your application supports inline input, you won't see an input window. You can type Korean text directly into the document and don't need to specify an input unit.

### Enabling inline input

If you prefer inline input, but your application does not support it, Power Input Method still lets you use inline input in your document.

Several of the features supported by standard input (such as symbol input and Hanja conversion) are not available when you enable inline input. Apple recommends you use standard input whenever possible.



To enable inline input, choose Turn off Standard Input from the Pencil menu or click the  (Turn Off Standard Input) button in the operation palette.

When you enable inline input, you enter and convert text directly in your application. Power Input Method offers two Korean input modes with inline input:

- 2-set Korean Keyboard
- 3-set Korean Keyboard

### Entering Roman-based text

You must use standard input to enter a Roman-based language, such as English, French, Spanish, and so on. To input Roman characters, choose Single Width Roman or Double Width Roman from the Pencil menu.

You can also click the  (Single Width Roman) button or the  (Double Width Roman) button in the operation palette.

### Converting Roman characters to Korean

You must be in single-width Roman mode to convert Roman characters to Korean.

If you think you are entering text in Korean mode, but are actually in Roman mode, instead of retyping the text, you can convert it to Korean using this keyboard shortcut.

The following example is based on the 2-set Korean keyboard. Try converting dkssudgktpdy to ◆ (“How are you?”) by following these steps. When a gray reading line appears under the English text, press ⌘-Option-K to convert it to Korean.

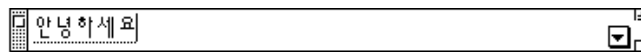
- 1 Choose 2-set Korean Keyboard from the Pencil menu.
- 2 Choose Single Width Roman mode from the Pencil menu.
- 3 Type dkssudgktpdy.

If you make a mistake, press the Delete or Backspace key to erase it.



- 4 Press ⌘-Option-K.

The Roman text is converted to Korean.



## Entering Hiragana and Katakana text

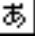
Phonetic Japanese characters, or Kana, are used frequently in business and education correspondence in Korea. For this reason, these characters are included as part of the standard Korean character set.

You must use standard input to enter Japanese phonetic characters. Hiragana and Katakana input are based on the romanization of Kana. See the table in Appendix G, “Hiragana and Katakana Phonetic Transliteration Input Table.”

*Note:* You cannot convert Kana to Kanji. If you need this capability, you should consider purchasing the Japanese Language Kit or KanjiTalk software.

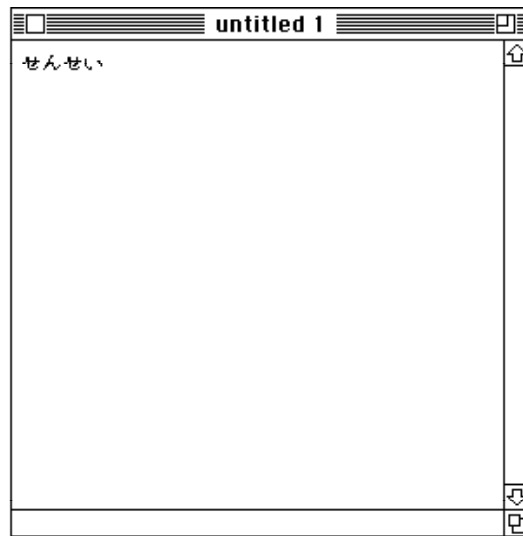


## Hiragana input


To input Hiragana, choose Hiragana from the Pencil menu or click the  (Hiragana) button in the operation palette.

Try entering ◆, “teacher,” by following these steps:

- 1 Choose Hiragana from the Pencil menu.
- 2 Type sennsei and press Return.

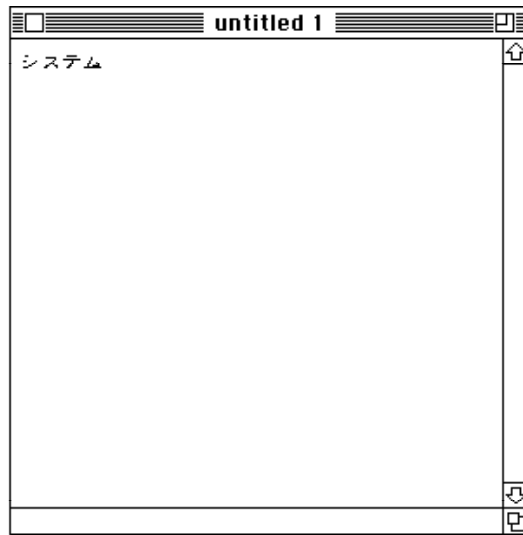


### Katakana input

To input Katakana, choose Katakana from the Pencil menu or click the  (Katakana) button in the operation palette.

Try entering ◆, “system,” by following these steps:

- 1 Choose Katakana from the Pencil menu.
- 2 Type sisutemu and press Return.



*Note:* Kana documents created using the Korean Language Kit cannot be viewed on computers using the Japanese Language Kit or KanjiTalk software.

## Converting to Hanja

Power Input Method allows you to convert Hangul to Hanja. You can convert characters or words.

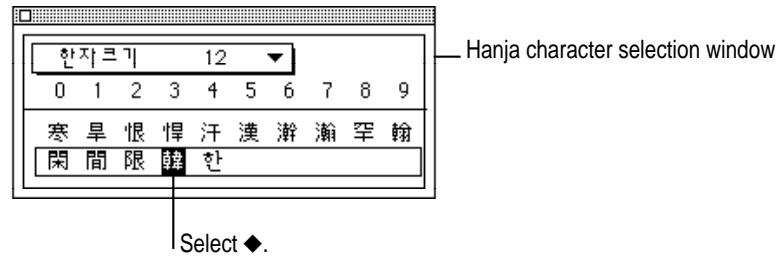
### Converting characters to Hanja

To convert the character **◆**, follow these steps:

- 1 Choose Romaja 1 from the Pencil menu.
- 2 Choose Turn On Standard Input from the Pencil menu.
- 3 Type han (**◆**).
- 4 Press Option-Return or Control-Return.

The Hanja window appears. The Hanja window contains all the possible Hanja characters that are pronounced “han.”

- 5 Highlight **◆** using the mouse or the arrow keys on your keyboard.



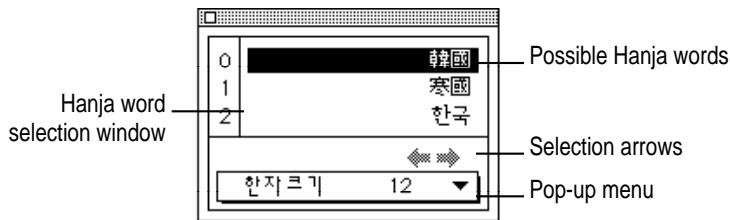
- 6 Press Return.

The Hanja character appears in your document.

You can also double-click the Hanja character to insert it in your document.

## Converting words to Hanja

To convert words to Hanja, use the arrow keys or mouse to highlight the Hanja word. Then press the Return or Enter key to insert the word into your document.



To move left or right in the selection list, click the left or right arrows at the bottom of the Hanja window.

## Adding a Hanja word to the dictionary through the input method

You can add a Hanja word to the user-defined Hanja dictionary directly from the input method if no word exists for the Korean word you're trying to convert. This is called “registering” a word.

*Note:* Hanja words can also be added to the dictionary with the Hanja Dictionary utility. See Chapter 3 for more information.

The following example shows you how to add the word ◆, “New Human Race”:

- 1 In the Hanja word selection window, choose ◆ (Turn on Automatic Hanja Registration) from the pop-up menu.
- 2 Choose Turn On Standard input from the Pencil menu.
- 3 Choose Romaja 1 from the Pencil menu.
- 4 Type sinInlyu.



**5 Press Option-Return or Control-Return.**

Since this word was not located in the main dictionary, the Hanja registration palette appears.



**6 Select the first character of your word, in this case ◆, using the mouse or the arrow keys on your keyboard.**

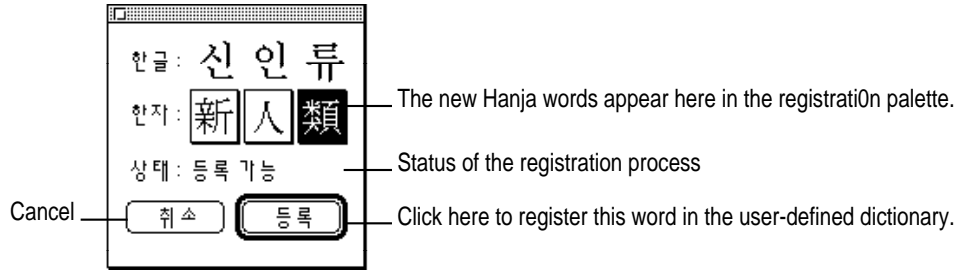
**7 Press Return.**

The Hanja character appears in the Hanja registration palette.

You can also double-click the Hanja character to add it to the Hanja registration palette.

**8 Select ◆ and ◆ for the second and third characters.**

If you make a mistake, click the square containing the character you want to change and select the new character.



**9 Click ◆ (Register) to add the Hanja word to the user-defined Hanja dictionary.**

You can also press Return or ⌘-O.

To cancel the registration process, click the ◆ (Cancel) button. You can also press the Delete or Clear key if you have not completed the Hanja word. If you have completed the Hanja word, you can also press ⌘-C or ⌘-.

The Hanja registration palette displays the status of the registration process:

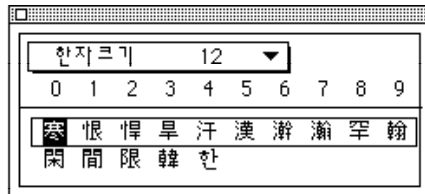
- ◆ (Selection in process) - More Hanja characters must be selected to complete the word.
- ◆ (Ready to register) - All Hanja characters for the Korean word have been selected and the Hanja word can be added to the user-defined Hanja dictionary.
- ◆ (No hanja character) - There is no Hanja character that matches the selected Korean character.
- ◆ (Error) - An error occurred and you cannot register this word.

### Using keyboard shortcuts to input Hanja

The Hanja window contains a row of letters (A–J) or numbers (0–9). To jump quickly to a character, press the Control key and the letter (or number) of the column where the character is located. For example, to convert the Hangul character ◆ to the Hanja character ◆:

- 1 Choose 2-set Korean Keyboard from the Pencil menu.
- 2 Choose Turn on Standard Input from the Pencil menu.
- 3 Type gks.
- 4 Press Option-Return or Control-Return.

The Hanja window appears.



- 5 Press Control-3.

The ◆ character is selected.

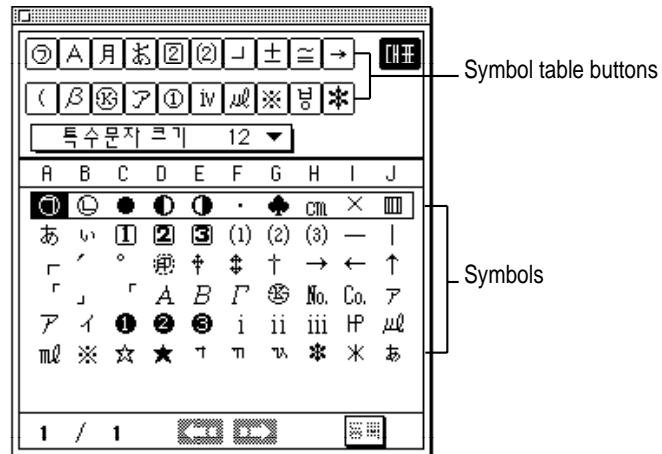


You can follow the same steps to convert a Hangul word to a Hanja word. The only difference is that in the Hanja word conversion window, the header appears as a column of letters or numbers.

## Entering symbols

A large set of symbols important to Korean publishers is included with the Korean Language Kit. Power Input Method lets you enter these symbols by selecting them from a symbol palette.

- Choose **Show Symbol Palette** from the Pencil menu to display the symbol palette.



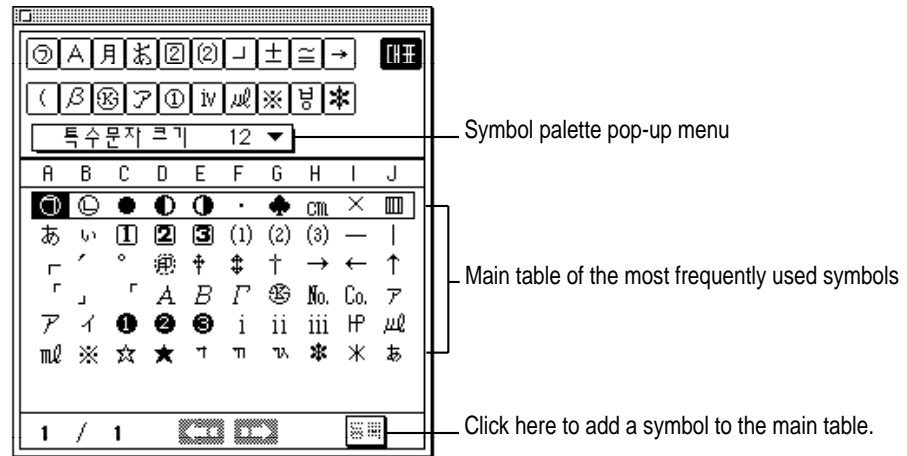
The buttons on the top part of the symbol palette represent symbol tables. For example, if you click the “(” button, you see the symbols associated with parentheses in the symbol window

If you know the character code for the symbol you want, hold down the Option key while entering the 4-digit character code for the symbol. See Appendix E, “Numeric Codes for Symbol Characters,” for the symbol character codes.



### Viewing the most frequently used symbols

The symbol palette includes a main table of the 60 most frequently used symbols. This table appears automatically when you open the symbol palette, or you can display it by clicking the ◆ button in the symbol palette.



### Adding your own symbols to the main symbol table

You can update the main symbol table to include your frequently used symbols. Follow these steps:

- 1 In the symbol palette, choose ◆ (Unlock Main Symbol Table) from the pop-up menu.
- 2 Select the symbol you want to add to the main symbol table.
- 3 Click the ◆ button to add the symbol to the main symbol table.

Or hold down the Option key while dragging the symbol to the ◆ button.

To lock the main symbol table, choose ◆ (Lock Main Table) from the pop-up menu in the symbol palette.

To restore the default main symbol table, choose ◆◆ (Restore Symbol Order) from the pop-up menu in the symbol palette.

### Changing the order in the symbol tables

In each symbol table, the most frequently used symbols are listed first. To change the symbol order, follow these steps.

- 1 In the symbol palette, choose **◆ (Allow Order Change)** from the pop-up menu.
- 2 Hold down the Option key and drag a symbol to its new location.

To lock the symbol order, choose **◆ (Preserve Current Order)** from the pop-up menu in the symbol palette.

To restore the default symbol order, select **◆ (Restore Symbol Order)** from the pop-up menu in the symbol palette.

### Entering symbols using character codes

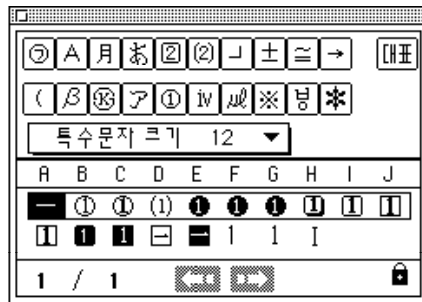
You can enter a symbol by specifying its character code. The character codes are listed in Appendix E, “Numeric Codes for Symbol Characters.”

- 1 Choose **Turn on Standard Input** from the Pencil menu, or select **◆ (Turn on Standard Input)** from the operation palette.
- 2 Hold down the Option key and type the 4-digit character code.
- 3 Press the Return key or Space bar to transfer the character from the input window to your document.

*Note:* Some signs and symbols are not available in some fonts.

### Using keyboard shortcuts to input symbols

You can open the symbol palette by typing a number, punctuation, or Korean character into the document or input window and pressing Control-Return or Option-Return. The symbol palette opens showing only the symbols associated with the character you entered. For example, if you type 1 and press Control-Return, the palette shows symbols related to 1.

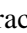



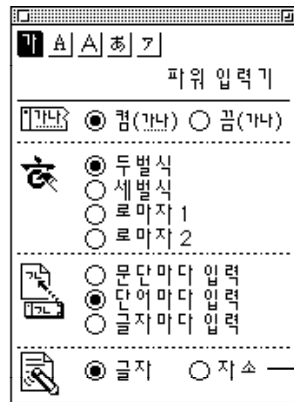
## Editing entered text

If you make a mistake entering text, you can use the Delete or Backspace key to correct it. You can edit text in inline input and in the input window.

### Editing text with inline input

Set the insertion point to the right of the unwanted characters using the arrow keys or mouse. Erase them with the Delete or Backspace key and then enter the correction.

In Korean input modes, you can delete by character or by jamo (individual Korean consonants and vowels). To select the deletion unit, choose Delete by Character or Delete by Jamo in the Pencil menu. You can also click  or  in the operation palette. For other input modes, you can delete by character only.



Select the deletion unit here. Delete By Character is selected.

### Editing text in the input window

You cannot move the insertion point in the input windows. Use Delete or Backspace to erase characters and then enter the correction.

## Special input tips

### ■ Inputting double consonants (◆)

To input double consonants with 2-set Korean keyboard mode or Romaja 1 and 2 input modes, you can either press the single consonant key twice, or press the same key once in uppercase. For example, to input “◆”; type gga+ci or Ga+ci.

### ■ Inputting silent consonants

Since every syllable in a Hangul word must start with a consonant, it is necessary to indicate the presence of the silent consonant. If you don't input the silent consonant, the input method will incorrectly use the last consonant of the preceding syllable as the first consonant of the new syllable.

To specify a silent consonant at the beginning of a Hangul syllable with Romaja 1 input mode, type the vowel that immediately follows the silent consonant in uppercase. For example, to generate the word “◆”; type dog+Eo. (If you type dogeo, the input method will incorrectly convert it to “◆”.)

### ■ Inputting the silent consonant, “◆”

Using Romaja 1 input mode, you can also input “ng” to represent a silent “◆”. In the above example, you can type dog+ngeo to generate the same Hangul word.

Using Romaja 2 input mode, you can generate both silent and non-silent “◆” by pressing the X key.

Using 2-set Korean Keyboard mode, you can generate both silent and non-silent “◆” by pressing the D key.

Using 3-set Korean Keyboard mode, you can generate silent “◆” by pressing the J key and non-silent “◆” by pressing the A key.

### ■ Displaying semi-composed Hangul characters

In 2-set or 3-set Korean keyboard mode, the Korean character code does not contain the semi-composed characters for “◆”. As you type romanized spellings of these characters, you may see some unreadable characters until you complete the syllable.

Similar limitations exist in Romaja modes. For example, to enter “◆” you must type in gwaes. Typing gwaess will not work because there is no semi-composed character “l” in the Korean character code set.

# 2

## Power Input Method Menus, Dialog Boxes, and Windows



### *In this chapter*

This chapter describes the windows, menu items, palettes, and dialog boxes found in Power Input Method. Power Input Method provides several ways to access the same feature. Try all the methods to decide which feels most comfortable to you.

- Keyboards menu
- Pencil menu
- Operation palette
- Symbol palette
- Hanja conversion palette
- Hanja Dictionary Utility
- Input window
- Help

## Keyboards menu

After you install the Korean Language Kit, the Keyboards menu icon appears between the Help and Application menu icons in the upper-right corner of your screen. The Keyboards menu displays the available keyboard layouts and input methods. In the following example, two input modes are available:

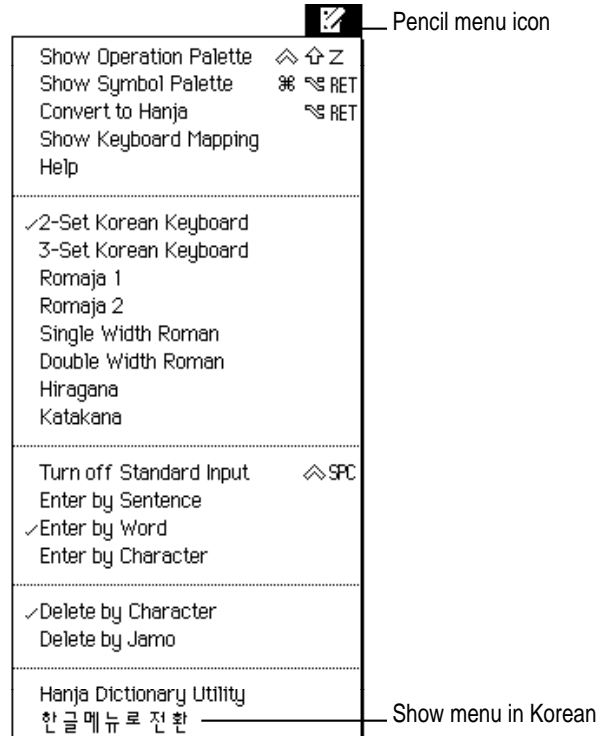
◆ (Power Input Method) and keyboard layouts for the Roman alphabet. If you have other Korean input utilities installed, their names also appear in the menu. Choose the input method you want to use from this menu.

You can also type ⌘-Space bar to switch input methods.



## Pencil menu

This section describes the Pencil menu. When you choose ◆ (Power Input Method) from the Keyboards menu, a pencil icon appears to the left of the Keyboards menu. The Pencil menu includes all Power Input Method commands.



### Show, Hide Operation Palette

Shows or hides the operation palette.

### Show, Hide Symbol Palette

Shows or hides the symbol palette.

### Convert to Hanja

Changes Hangul characters to Hanja.

**Show, Hide Keyboard Mapping**

Shows or hides the keyboard layout.

**Help**

Shows or launches the help window.

*Note:* The help window is only available in Korean.

The second section of the menu allows you to select one of the eight input modes. The selected mode has a checkmark. Refer to “About Input Modes” in Chapter 1 for a description of how to use each input mode.

**Turn on Standard Input, Turn off Standard Input**

Allows you to enter text using the standard input mode or to enable inline input into applications that don't provide it. See “About Input Modes” in Chapter 1 for more information.

**Enter by Sentence, Enter by Word, Enter by Character**

Allows you to choose whether text is entered into your document by character, word, or sentence. Refer to “Specifying the Input Unit in Standard Input” in the section “Entering Korean Text” in Chapter 1.

**Delete by Character, Delete by Jamo**

Allows you to choose whether Backspace or Delete deletes by character or jamo. Refer to “Editing Entered Text” in Chapter 1.

**Hanja Dictionary Utility**

Allows you to add words and phrases to a user dictionary. See “Adding a Hanja Word to the Dictionary” in Chapter 3.

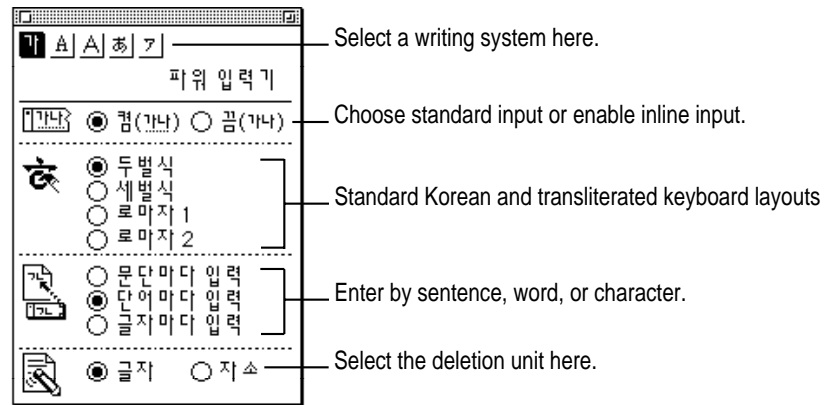
**Show Menu in English, ◆**

Displays the Pencil menu items in English or Korean.



## Operation palette

The operation palette appears when you choose Show Operation Palette from the Pencil menu. Commands listed in the Pencil menu correspond with buttons on the operation palette as shown below.



The operation palette gives you access to the following functions.

### Writing system

Use the buttons in the upper section of the palette to select a writing system. The highlighted button indicates your selection. You can also change writing systems using a keyboard shortcut. Press Shift–Space bar to switch between single-width Roman mode and Korean. If you are using Katakana, Shift–Space bar switches to Hiragana and vice versa.

### Standard input

You can process Korean using standard input or enabled inline input. Refer to “About Input Modes” in the section “Entering Korean Text” in Chapter 1.

### Korean and transliterated keyboard layouts

You can use four different keyboard input modes. The highlighted button indicates which input mode is selected. See “About Input Modes” in Chapter 1.

### Input unit

You can input Korean text by character, word, or sentence. Refer to “Specifying the Input Unit in Standard Input” in Chapter 1.

### Deletion unit

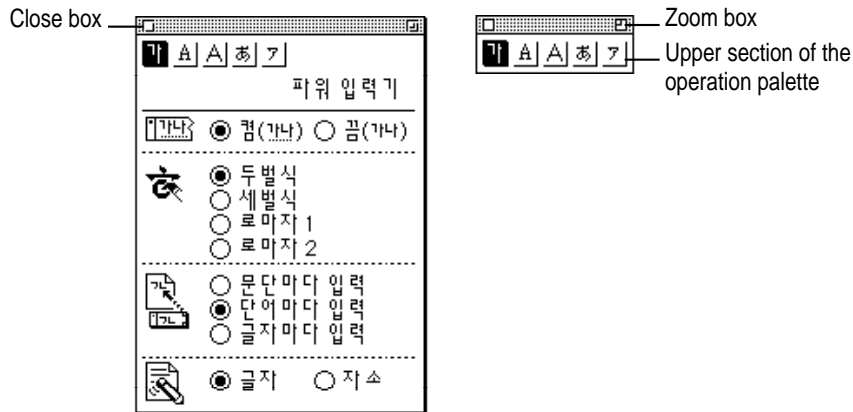
You can delete by character or by jamo. Refer to “Editing Entered Text” in Chapter 1.

### Controlling the operation palette

To show the operation palette, choose Show Operation Palette from the Pencil menu. To hide it, choose Hide Operation Palette. The keyboard shortcut Control-Shift-Z also shows and hides the palette. You can also close the palette by clicking the close box in the upper-left corner.

To move the operation palette, drag its title bar.

To display only the upper section of the operation palette, click the zoom box in the upper-right corner. To show the entire operation palette, click the zoom box again.



## Symbol palette

The symbol palette appears when you choose Show Symbol Palette from the Pencil menu. You can enter symbols in your document by selecting them from the symbol palette.



## Selecting the symbol table

The entire symbol character set is divided into 20 symbol tables, represented by the icons at the top of the symbol palette. Click an icon to see the character set associated with that symbol table.

## Symbol palette commands

The symbol palette pop-up menu includes the following commands:

### ◆ (Font Size)

Sets the font size of the symbol being inserted.

### ◆ (Unlock Main Symbol Table, Lock Main Symbol Table)

Unlocks or locks the main symbol table.

◆ (Restore Symbol Order, Revert to Previous Order)

Restores the default symbol order.

◆ (Unlock Symbol Order, Lock Symbol Order)

Arranges the symbol table based on the frequency with which symbols are used, or locks the symbol order.

◆ (Turn On Word Flashing, Turn Off Word Flashing)

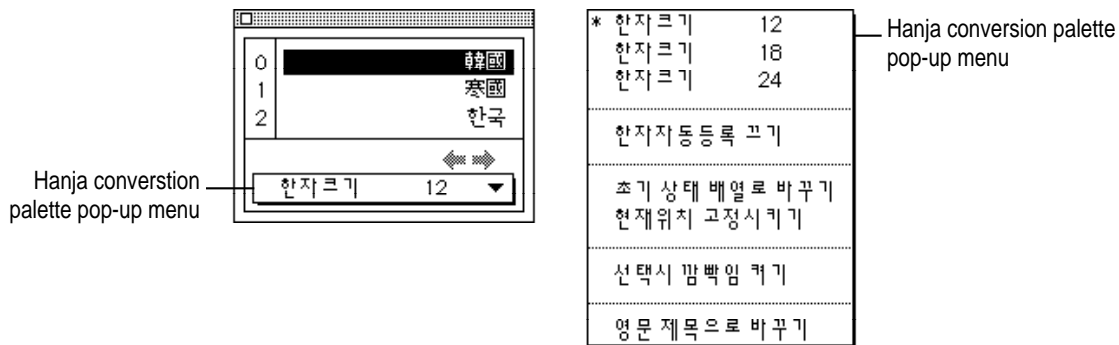
Flashes or doesn't flash the symbol before it is inserted into the document.

◆ (Alphabetic Header, Numeric Header)

Changes the symbol header to alphabetic (A–J) or numeric (0–9).

## Hanja conversion palette

You can convert Korean characters or words to Hanja with the Hanja conversion palette. Refer to “Converting to Hanja,” in Chapter 1 for a description of how to convert text. Shown below is the Hanja conversion palette for converting Hangul.



## Hanja conversion palette commands

The Hanja conversion palette pop-up menu includes the following commands.

### ◆ (Font Size)

Sets the font size of the Hanja being inserted.

### ◆ (Turn off Automatic Hanja Registration, Turn on Automatic Hanja Registration)

Disables or enables new Hanja word registration through the input method.

### ◆ (Restore Hanja Order, Revert to Previous Hanja Order)

Restores the default Hanja order.

### ◆ (Unlock Hanja Order, Lock Hanja Order)

Arranges the Hanja table based on the frequency with which Hanja words are used or locks the Hanja order.

### ◆ (Turn On Word Flashing, Turn Off Word Flashing)

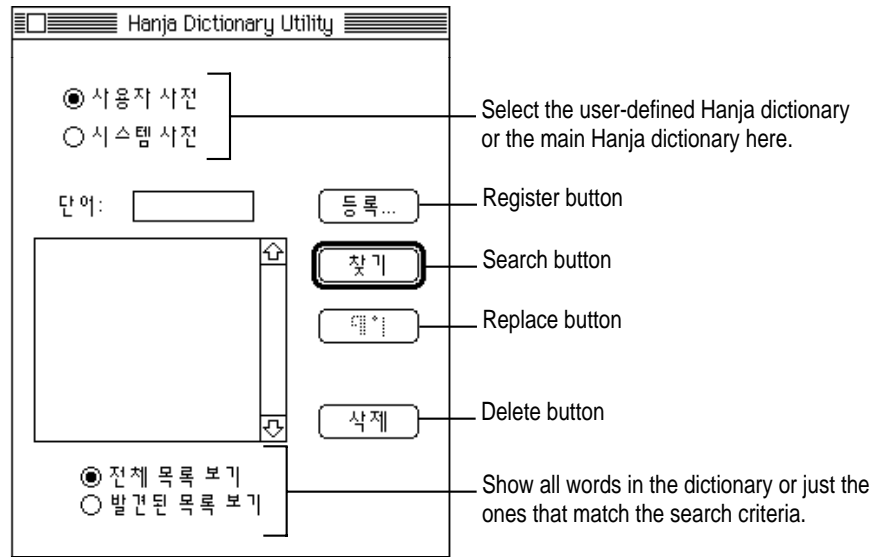
Flashes or doesn't flash the Hanja before it is inserted into the document.

### ◆ (Alphabetic Header, Numeric Header)

Changes the Hanja header to alphabetic (A-J) or numeric (0-9).

## Hanja Dictionary Utility

The Hanja Dictionary Utility allows you to search for a Hanja word in the main Hanja dictionary or to modify your user-defined Hanja dictionary. Refer to Chapter 3 for instructions on how to use the Hanja Dictionary Utility.



### Selecting the dictionary

Power Input Method includes two dictionaries: the main Hanja dictionary, which contains 4888 characters, and a user-defined dictionary, which you use to add and store Hanja words that are not already in the main dictionary. You can perform operations on **◆**, the user-defined Hanja dictionary or **◆**, the main Hanja dictionary.

#### ◆ (Register) button

Click Register to add a Hanja word to the user-defined Hanja dictionary.

#### ◆ (Search) button

Click Search to find all words in the user-defined Hanja dictionary or main Hanja dictionary that match the Hangul word you entered.

◆ **(Replace) button**

Click Replace to replace the selected Hanja word with the newly created word. You can replace words only in the user-defined Hanja dictionary.

◆ **(Delete button)**

Click Delete to remove the selected word from the Hanja dictionary. You can delete words only from the user-defined Hanja dictionary.

◆ **(List Entire Dictionary)**

Select List Entire Dictionary to see all words in the the user-defined Hanja dictionary or the main Hanja dictionary.

◆ **(Show Matching Words)**

Select Show Matching Words after you click the Search button to see the Hanja words in the dictionary that match the Hangul word you entered.

## Input window

Some applications support inline (direct) input. With these applications, you enter and convert text directly in your document.

If your application does not support inline input, the standard input mode brings up an input window automatically. The input window appears only when inline input is not available.

### Selecting a font for the input window

You can select the font to be used for the input window display. Be aware that some signs and symbols may not be available in certain fonts.

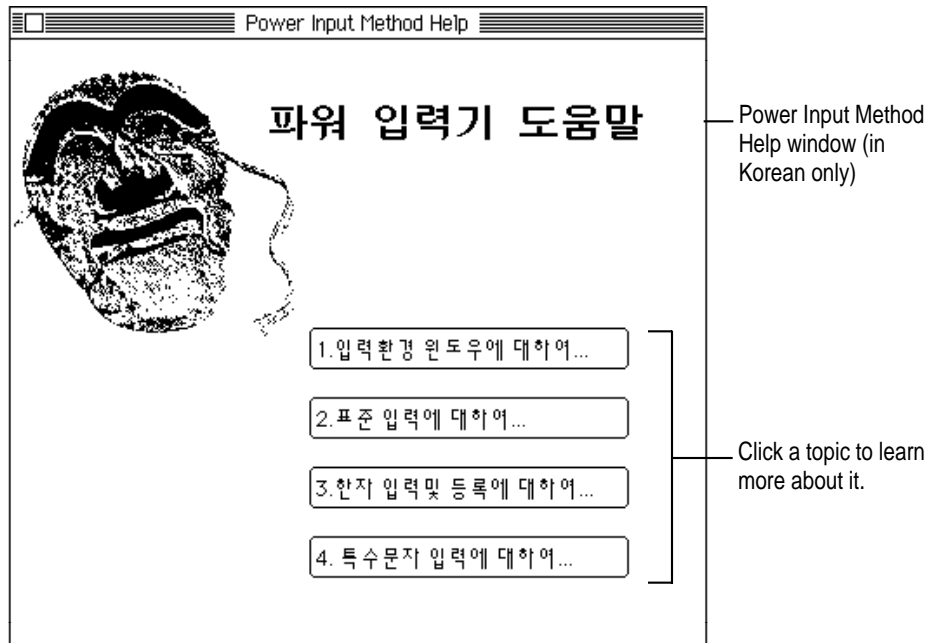
The font in a document is usually determined by the application you are using. If the application font that you selected differs from the font used in the input window, different signs and symbols may appear in your document when text is transferred from the input window.



Select the input window font.

## Help

If you can read Korean, you can get help and find answers to your questions by following the directions in the help window. You can access the help window while you are using Power Input Method by choosing it from the Pencil menu.





# 3

## Using the Hanja Dictionary Utility



### *In this chapter*

This chapter explains how to use the Hanja Dictionary Utility. The Hanja Dictionary Utility allows you to search for a Hanja word in the main Hanja dictionary or to modify your user-defined Hanja dictionary. This chapter covers

- Hanja Dictionary Utility files
- Starting the Hanja Dictionary Utility
- Finding a Hanja word
- Adding a Hanja word to the dictionary
- Changing a Hanja word
- Deleting a Hanja word

## Hanja Dictionary Utility files

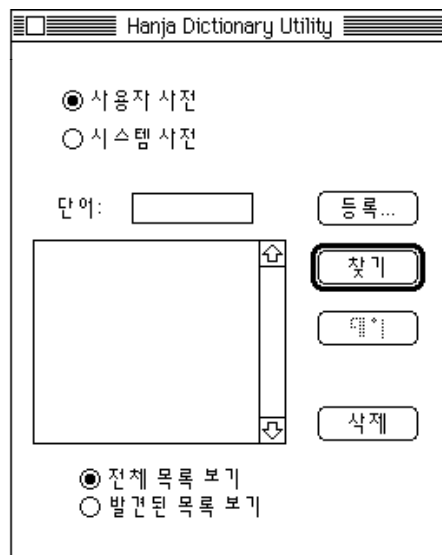
The Installer application automatically places the Hanja Dictionary Utility files in your System Folder and Apple Extras folder. After installation, you will find the Hanja Dictionary Utility in your Apple Extras folder.

The following files are installed in the System Folder:

- The index file for the user-defined Hanja dictionary
- The user-defined Hanja dictionary
- The main Hanja dictionary

## Starting the Hanja Dictionary Utility

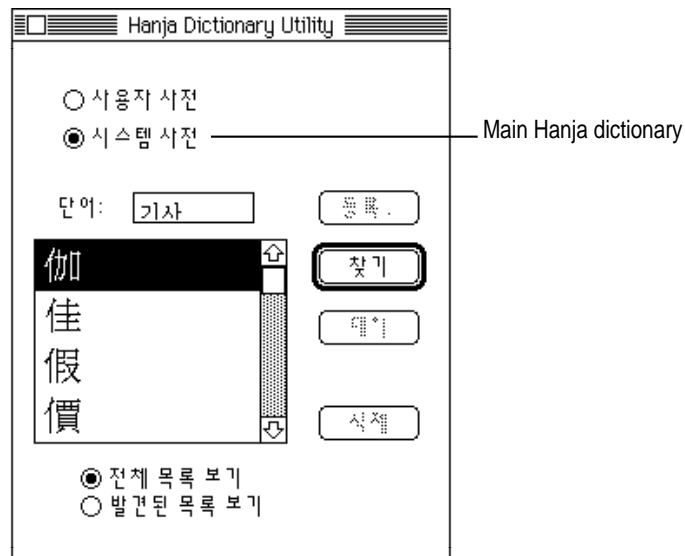
To open the Hanja Dictionary Utility, double-click the Hanja Dictionary Utility icon or choose Hanja Dictionary Utility from the Pencil menu.



## Finding a Hanja word

Try finding the Hanja word ◆ by following these steps.

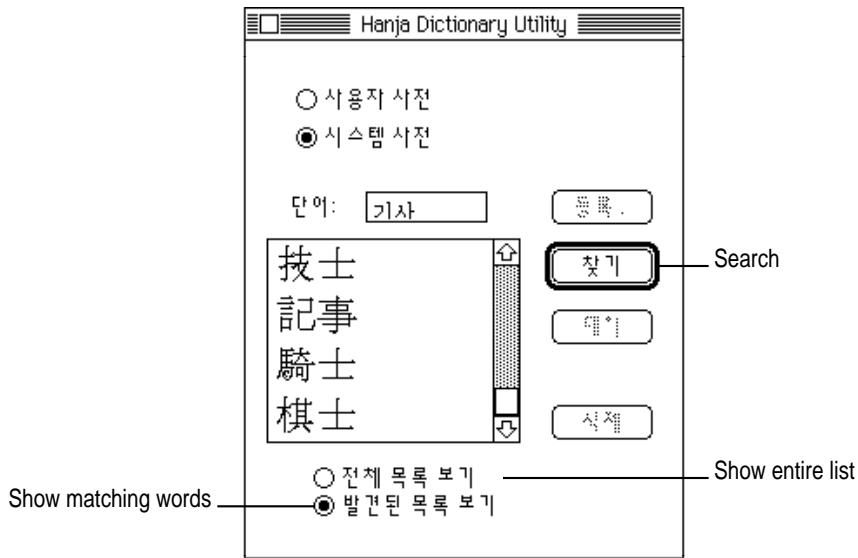
- 1 Open the Hanja Dictionary Utility.
- 2 Select the main Hanja dictionary.
- 3 Select Romaja 1 input mode from the Pencil menu or the Operation palette.
- 4 Type gisa.



**5 Press Return or click Search.**

The Hanja word list scrolls to the first entry that matches the word being searched for.

**6 Click ◆ (Show Matching Words).**



A list of Hanja words that match the word you entered appear in the list.

## Adding a Hanja word to the dictionary

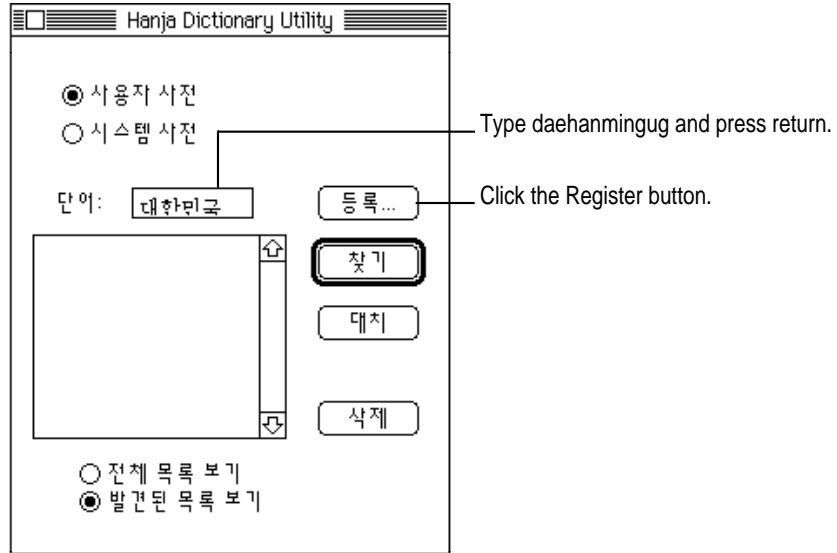
In Chapter 1, you learned how to add a word to the user-defined Hanja dictionary through Power Input Method. In this section, you will learn a second way to register a word, by using the Hanja Dictionary Utility.

*Note:* You cannot register words in the main Hanja dictionary.

The following example shows you how to add the word ◆, “Korea.”

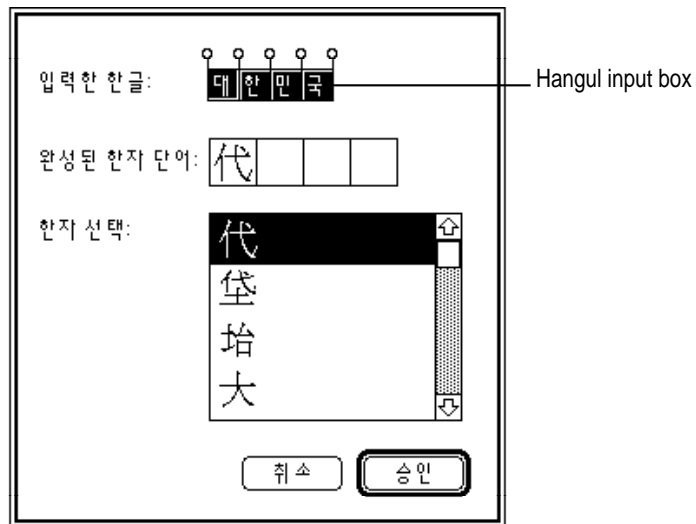
- 1 Open the Hanja Dictionary Utility.**
- 2 Select the user-defined Hanja dictionary.**
- 3 Choose Romaja 1 in the Pencil menu.**

**4 Type daehanmingug in the input window and press Return.**



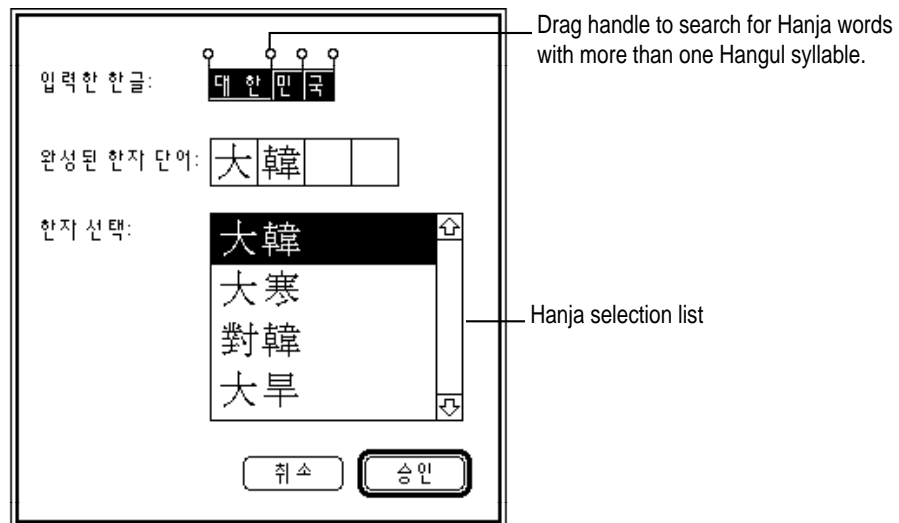
**5 Click the Register button.**

The Hanja registration window appears.



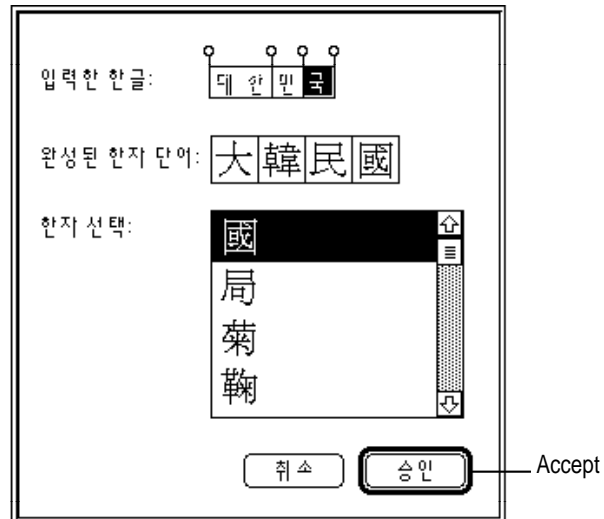
- 6 Click the second handle above the Hangul input box and drag it to the next handle. The handle disappears, creating a two-syllable Hangul selection.

The Hanja list now contains two-character Hanja words (from the main dictionary) that correspond to combined two-character Hangul words.



- 7 Click ◆ in the top row to choose the desired Hanja word from the list.
- 8 Repeat steps 6–7 to select the rest of the Hanja characters.

- 9 When you are finished, click Accept to register the word.



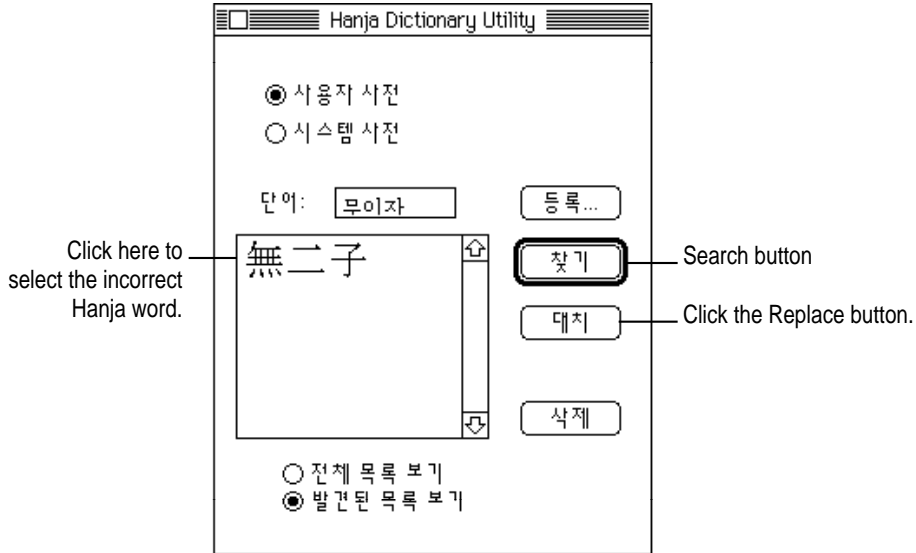
## Changing a Hanja word

To change or correct a word, you need to find the word you wish to correct, make the necessary changes, and register the new entry.

The following example shows you how to correct the incorrect entry ◆.

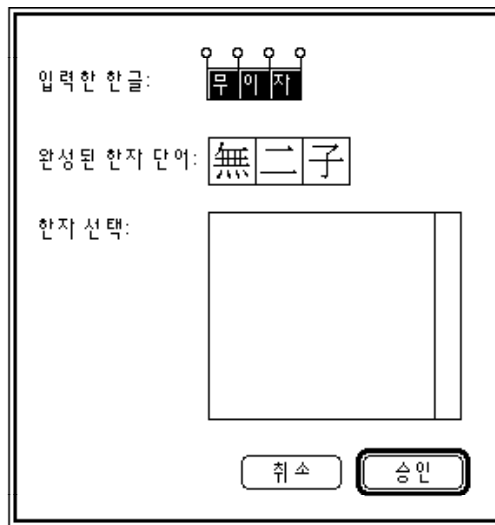
- 1 Open the Hanja Dictionary Utility.
- 2 Choose Romaja 1.
- 3 In the input window, type mulja.
- 4 Click the Search button.

**5** Select the Hanja word from the list that appears.



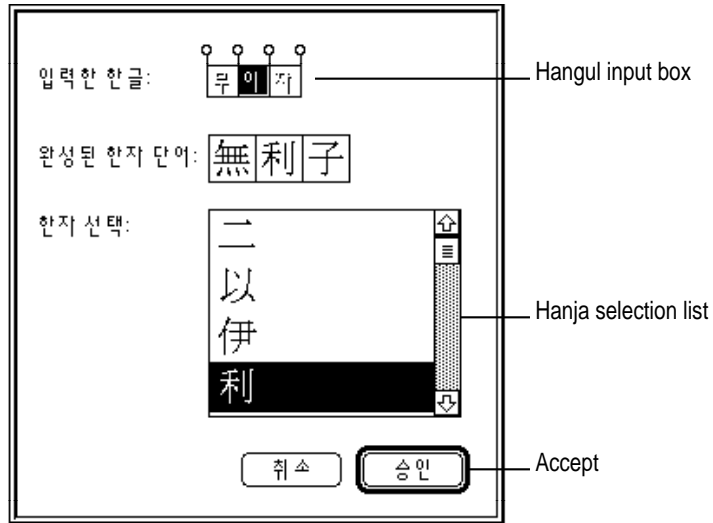
**6** Click the Replace button.

The Hanja registration window appears.





- 7 Click the second Hangul character in the Hangul input box to select it.
- 8 Click the correct Hanja character in the Hanja selection list.



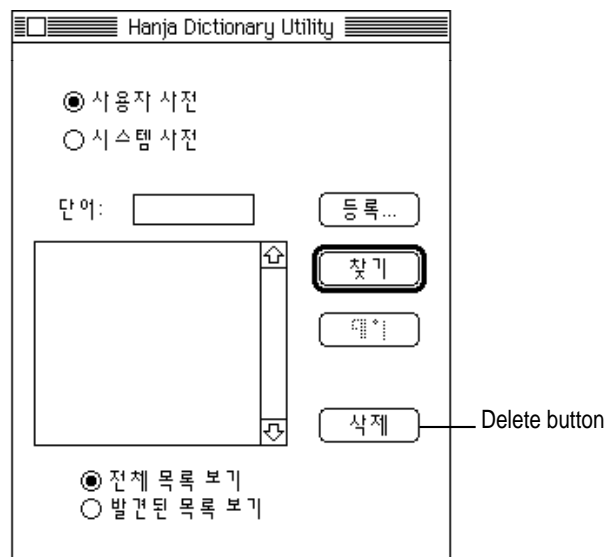
- 9 Click Accept to register the corrected Hanja word.

## Deleting a Hanja word

To delete a word from the user-defined dictionary, you need to find the entry and click the Delete button. You cannot delete words from the main dictionary.

**IMPORTANT** When you delete a word, it is erased permanently. You cannot undo this action. To restore the word, you must follow the steps in “Adding a Hanja Word to the Dictionary” earlier in this chapter.

- 1 Enter the Hanja word to be deleted in the input window.
- 2 Click the Search button.
- 3 If more than one entry matches the word, select the word you want to delete from the list.
- 4 Click the Delete button.





Apple Computer, Inc.

1 Infinite Loop

Cupertino, California 95014-2084

408.996.1010

U95602-004A

Printed in U.S.A.