



Xserve RAID

Using RAID Admin and Disk Utility

Includes instructions
for creating RAID arrays
and monitoring Xserve
RAID systems

 **Apple Computer, Inc.**

© 2003 Apple Computer, Inc. All rights reserved.

Under the copyright laws, this manual may not be copied, in whole or in part, without the written consent of Apple. Your rights to the software are governed by the accompanying software license agreement.

The Apple logo is a trademark of Apple Computer, Inc., registered in the U.S. and other countries. Use of the “keyboard” Apple logo (Option-Shift-K) for commercial purposes without the prior written consent of Apple may constitute trademark infringement and unfair competition in violation of federal and state laws.

Every effort has been made to ensure that the information in this manual is accurate. Apple is not responsible for printing or clerical errors.

Apple
1 Infinite Loop
Cupertino, CA 95014-2084
408-996-1010
www.apple.com

Apple, the Apple logo, and Mac are trademarks of Apple Computer, Inc., registered in the U.S. and other countries.

Rendezvous and Xserve are trademarks of Apple Computer, Inc.

Java is a trademark of Sun Microsystems, Inc.

Other company and product names mentioned herein are trademarks of their respective companies. Mention of third-party products is for informational purposes only and constitutes neither an endorsement nor a recommendation. Apple assumes no responsibility with regard to the performance or use of these products.

Simultaneously published in the United States and Canada.

022-0794



Contents

Preface

About Software for Xserve RAID Systems 5

1 Configuring an Xserve RAID System 7

- Installing the RAID Admin Application 8
- Connecting to the System 8
- Entering Basic Settings for an Xserve RAID System 9
 - System Identity and Access 10
 - Configuring Additional Systems 13

2 Working With RAID Arrays 15

- Creating a RAID Array 15
 - About Spare Drives 17
 - Modifying a RAID Array 17
- Rebuilding a RAID Array 18
- Deleting a RAID Array 18
- Formatting and Mounting Arrays on a Host System 19
- Masking Drives on Multiple Host Systems (LUN Masking) 21
 - About the World Wide Port Name 21
 - Setting Up LUN Masking With RAID Admin 22
- Adding Software RAID to Two or More Arrays 24

3 Monitoring Status and Adjusting Settings 27

- Monitoring System Status 27
 - Adding a System to the Monitoring List 27
 - Getting System Information 27
- Removing a System From the Monitoring List 30

Changing System Settings	30
Adjusting Basic Information and Network Settings	30
Adjusting Fibre Channel Speed and Topology	31
Adjusting LUN Masking	32
Adjusting Drive Cache and Controller Cache	32
Using System Commands	34
Turning the System Identifier On or Off	34

About Software for Xserve RAID Systems

You use three applications to configure and monitor your Xserve RAID system. Two of these applications, RAID Admin and Fibre Channel Info, are included on a CD with the system. (In some instances, the CD with RAID Admin and Fibre Channel Info is supplied with other systems or cards as well.)

The third application, Disk Utility, is part of Mac OS X and Mac OS X Server.

You use RAID Admin to set up the Xserve RAID hardware, including

- Creating or deleting RAID arrays (known as “hardware RAID”)
- Monitoring the status of one or more Xserve RAID systems
- Adjusting settings, including system name and password, network address for each RAID controller, fibre channel communication speed, drive cache, controller cache, and LUN masking
- Setting up email notification for system alerts

You use Fibre Channel Info to locate an identifier, the World Wide Port Name (WWPN), associated with each port on the fibre channel card in a host computer. You need this number only if you have multiple host computers connected to one Xserve RAID system through a switch. The Fibre Channel Info application works only with the Apple Fibre Channel PCI Card.

You use Disk Utility to create volumes and mount them on the host system. You can also use Disk Utility to add “software RAID” to two or more hardware RAID arrays. You use Disk Utility for

- Mounting arrays on the host system (which includes putting the file system on arrays and creating volumes)
- Implementing software RAID (striping or mirroring two or more RAID arrays)

This guide provides instructions for using RAID Admin to configure and monitor Xserve RAID systems and using Disk Utility to enhance hardware RAID arrays. For descriptions of RAID levels and the types of arrays you can set up on an Xserve RAID system, see Chapter 7, “RAID Overview,” and Chapter 8, “Planning RAID Storage for the Xserve RAID System,” in the *Xserve RAID User’s Guide*.

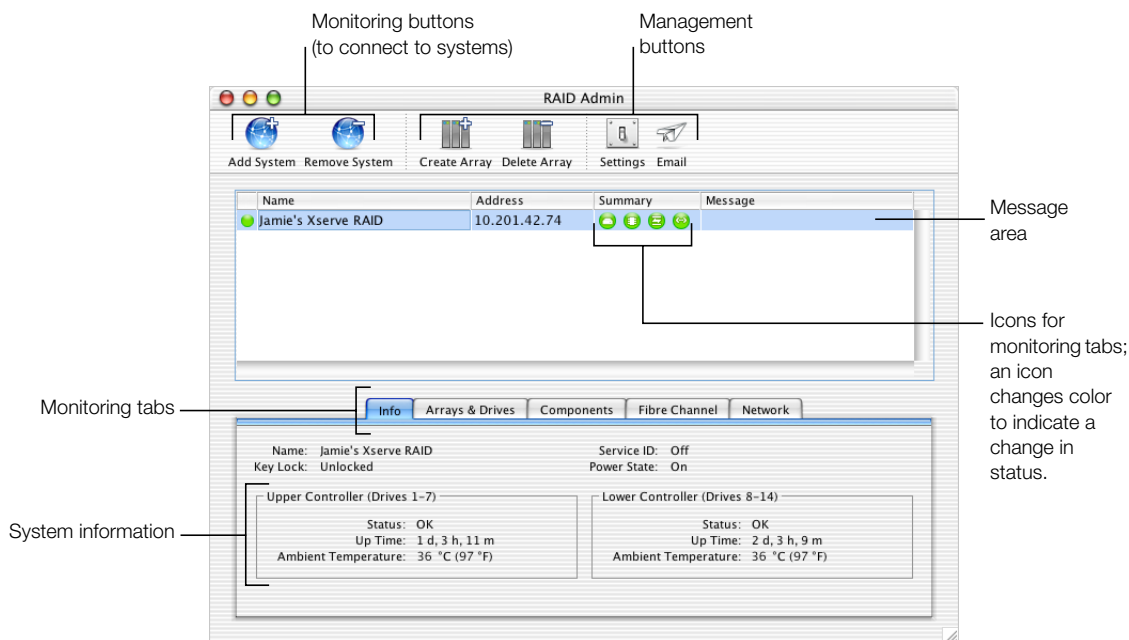
See Chapter 1, “Configuring an Xserve RAID System,” on page 7, for details on configuring a system for the first time.

See Chapter 2, “Working With RAID Arrays,” on page 15, for instructions on creating and deleting RAID arrays.

See Chapter 3, “Monitoring Status and Adjusting Settings,” on page 27, for information on managing systems, changing settings, and getting details of a system alert.

Configuring an Xserve RAID System

You use RAID Admin to enter basic information, such as system name, access level and password, and network settings, on the Xserve RAID system. Monitoring buttons require the monitoring password; management buttons require the management password.



Before creating RAID arrays, it's a good idea to configure the system with the name, password, and network settings you want. You may need to get some information from the network administrator for your location.

Be sure to write down the information you enter for the system and keep that record in a safe place. If you plan to share your Xserve RAID system, other users will need to know some or all of these details.

Installing the RAID Admin Application

You must install RAID Admin on all computers that you want to use to monitor or administer Xserve RAID systems. Each monitoring computer must be using Java 1.3.1 or a more recent version. (Java 1.3.1 is supported in Mac OS X v10.2 and later versions.)

To install RAID Admin on a monitoring computer:

- Insert the Xserve RAID Admin Tools disc in the optical drive of the monitoring computer and copy the folder “RAID Admin” to that computer.

You can also copy the software folder from a remote system or server if the computer you want to use for monitoring does not have an optical drive.

Connecting to the System

RAID Admin uses Rendezvous discovery to simplify connecting to an Xserve RAID system the first time. The application lists the IP address of the systems on the same subnet as your monitoring computer.

The system’s default configuration is to use DHCP for a network address. If no DHCP server is available, the system will automatically use a link local address of 169.254.x.x.

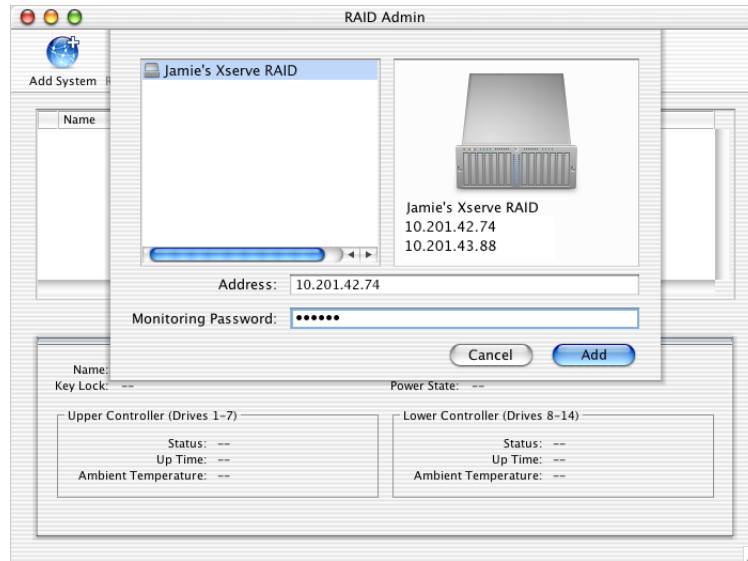
Important The first time you configure an Xserve RAID system, you must use RAID Admin on a computer that is on the same subnet as the system. By doing so, you can connect to the system without knowing the IP address of the system.

To connect to a system:

- 1 Turn on the Xserve RAID system.

Note: The first time you turn on the system, the RAID controllers begin initializing the drives in the system. This process will take several hours; for example, an array with seven drives takes a minimum of 12 hours to initialize. You can use the default RAID Level 5 array (or arrays, depending on the number of drives in the system) immediately (as the drives are initializing) or stop initialization by connecting to the system and deleting the arrays that are set up at the factory. Connecting during initialization and deleting an array will not harm the system. If you have written any data on an array, deleting that array will cause that data to be lost.

- 2 Start RAID Admin on a computer that is on the same subnet as the system and click Add System.



- 3 In the Add window, select the system you want from the list or type the IP address of the system in the Address field.
- 4 Type the Monitoring Password.

Monitoring access allows you to monitor a system but not make changes. When you want to create an array or make other changes, the software asks you to enter the management password.

Note: The default monitoring password is “public.” The default management password is “private.”
- 5 Click Add.
- 6 Select the system in the list to display its settings and information in the monitoring tabs.

Entering Basic Settings for an Xserve RAID System

You can enter or change a number of settings for the Xserve RAID system. These include

- System name
- Location of the system and key contact
- Management or monitoring password
- System time synchronization with the monitoring computer

- Audible alarm on or off; automatic restart after power outage on or off
- Network address configuration
- Fibre channel options for transmission speed and connection type
- LUN masking (for showing or hiding arrays when multiple hosts are connected to a system)
- Turning on drive cache for each array and controller cache (for each RAID controller)

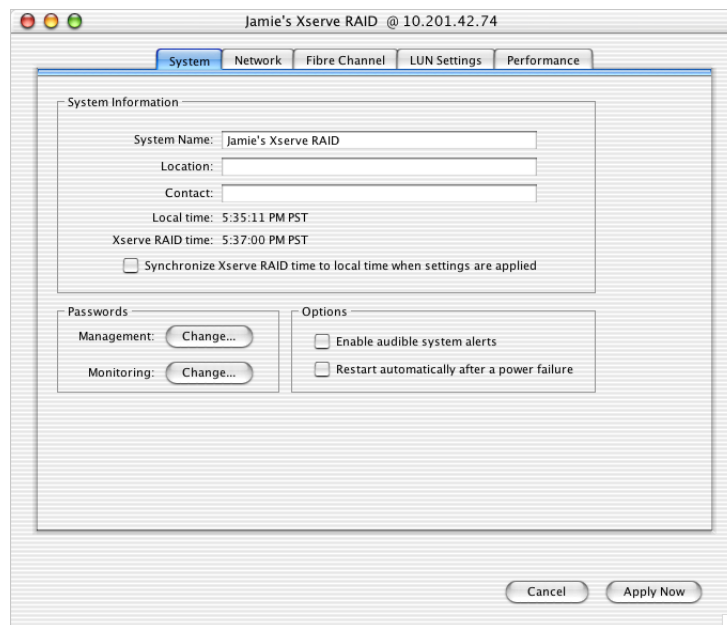
Some settings require that you restart the Xserve RAID system.

System Identity and Access

You use the Settings window in RAID Admin to add or change most information for your Xserve RAID system.

To open the Settings window:

- 1 In the RAID Admin window, click the Settings button.
- 2 Enter the management password and click OK.



System Name and Contact Information

Use the System tab in the Settings window to enter or change the system name. (A default name for the system is set at the factory.) You can also enter reference information, including the physical location of the Xserve RAID system and the primary contact for that system.

Click the “Synchronize Xserve RAID time” box to set the time to that of your computer (the one on which you are using RAID Admin). (The system is preset at the factory.)

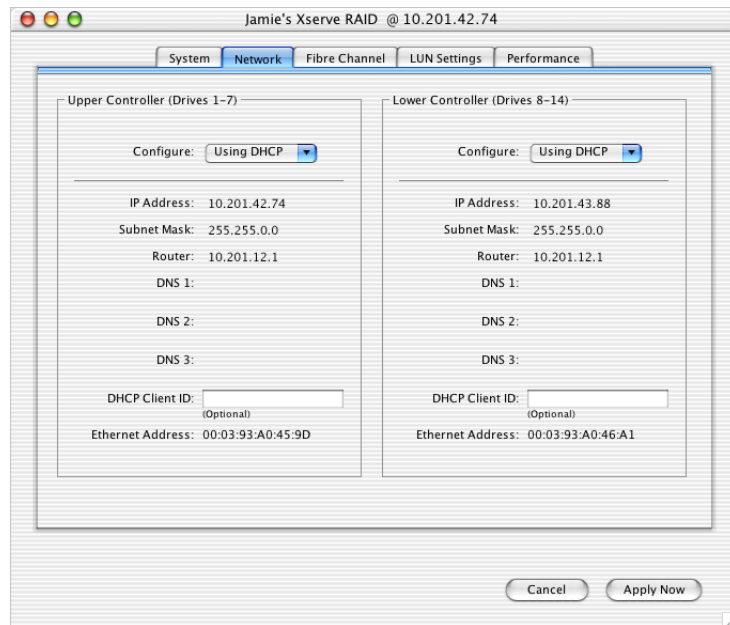
You can change the password for management or monitoring access using the appropriate Change button. When setting up the system, you may want to change both passwords. Be sure to write them down and make them available to anyone else who is authorized to make changes (management) or monitor system status (monitoring).

Important Only one person at a time can manage a particular system. Each time you want to do a management task, you must enter the management password.

The option for audible alerts is turned on by default.

Network Address

You use the Network tab of the Settings window to set the IP address for each RAID controller in the system.



- If you have one or two fixed IP addresses, choose Manually from the Configure pop-up menu and type the address, subnet mask, and router information.
- If you don't have a fixed IP address, choose Using DHCP from the Configure pop-up menu. (DHCP is the default setting for the system.)

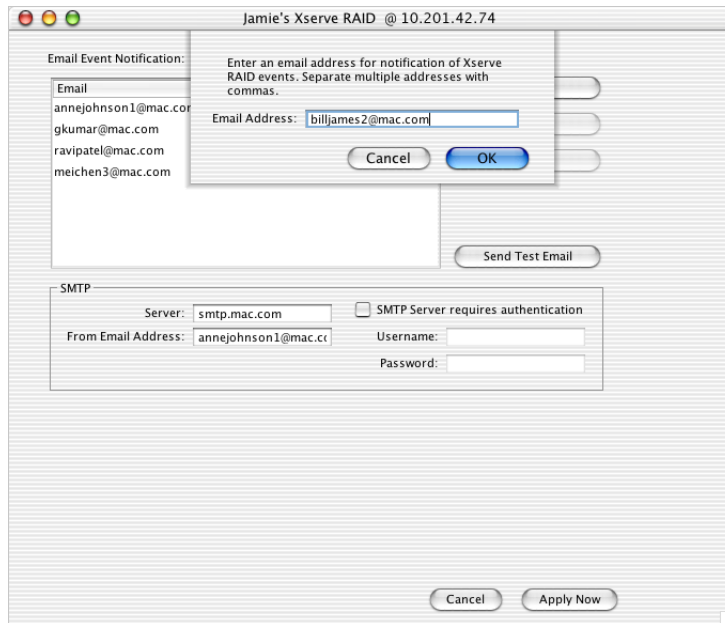
For specific information about the IP address and other network details for your system, check with the network administrator at your location.

Email Notification

The Xserve RAID system sends an email message whenever it detects an error condition, so it's a good idea to enter contact addresses when you configure the system. You can add as many email addresses as you wish for notification; separate the names with commas.

To set up email notification:

- 1 In the RAID Admin window, click the Email button.
- 2 Enter the management password and click OK.
- 3 In the Email Notification window, click Add.
- 4 Enter one or more email addresses in the text field and click OK.



- 5 Enter the address of the SMTP server and the sender's email address. You can use your own address or create a new address on the SMTP server with a name such as "Xserve RAID 3 alert" to identify the system and the purpose of the email message. (The address you use must be a valid one on the SMTP server.)
- 6 If the SMTP server requires authentication, click the authentication checkbox and enter the appropriate user name and password.

You can use the Send Test Email button to verify that notification is working.

- 7 Click Apply Now.

Configuring Additional Systems

If you plan to configure multiple Xserve RAID systems, you must enter the information and choose settings for each system individually.

If the other systems you want to set up are on the same subnet, you can add each one to the monitoring list and then add name and contact information, change passwords, and enter IP addresses for each system. Each time you begin a management task, you have to enter the management password for that system.

If you need to configure a system for the first time that is not on the subnet with your monitoring computer, you must find out its IP address or use RAID Admin on another computer on the subnet with that system. Once you know the IP address of the systems you want to monitor, you can connect to them from any location with TCP/IP access.

Once you've configured the system with basic settings, you can begin using the RAID Level 5 arrays preconfigured at the factory, or you can create other RAID arrays and begin storing data on the system.

Working With RAID Arrays

Once you've configured the Xserve RAID system with basic settings, you can create RAID arrays (also known as RAID sets). For explanations of RAID levels and combinations offered by the Xserve RAID system, see Chapter 7, "RAID Overview," and Chapter 8, "Planning RAID Storage for the Xserve RAID System," in the *Xserve RAID User's Guide*.

Creating a RAID Array

You use the Create Array window of RAID Admin to set up an array. This window lists the hardware RAID levels you can create and displays a picture of the system's front panel so that you can easily choose the drives to include in each array. A checkbox is on each available drive in the picture. (Once you've created an array, its drives show the array's number.)

Note: The Xserve RAID system uses two RAID controllers. The upper controller manages drives 1 through 7 on the left side of the system (when viewed from the front); the lower controller manages drives 8 through 14 on the right side. If your system has fewer than 14 drives, you may want to rearrange the drive modules to take advantage of both RAID controllers, which provide greater performance and redundancy. Dividing the drives between the two controllers decreases the overall capacity of any one array, however.

If you want to move drive modules from one controller to the other, you must do it before creating a RAID array that contains those drives. You cannot create a RAID array that spans both controllers. (You can use Disk Utility to add software RAID to two or more arrays, however; see "Adding Software RAID to Two or More Arrays" on page 24 for details.)

Note: If you move a drive module from one RAID controller to another, the preset RAID array using that drive is deleted.

Any drives not used in an array are treated as global spares (also called "hot spares") for all arrays on that controller.

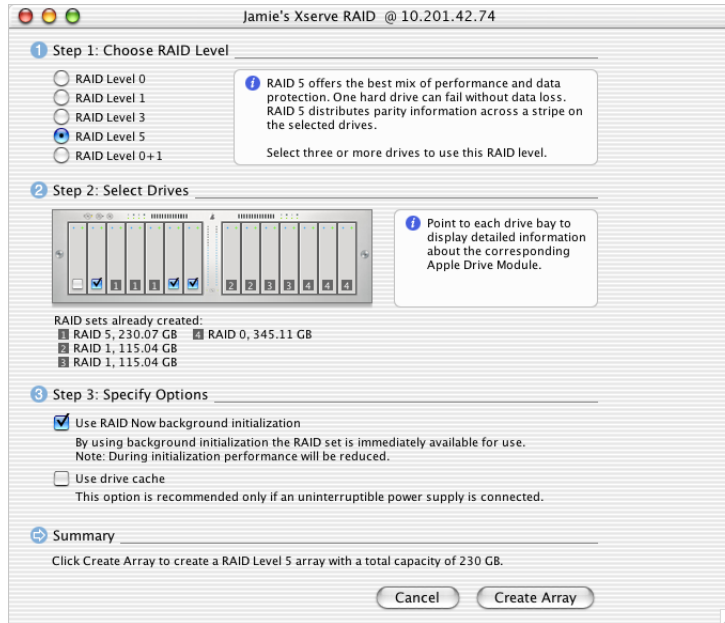
Important Once you create an array, you cannot edit it. Be sure to plan the arrays carefully to avoid having to remove an array later.

As you plan your arrays, keep in mind that each RAID controller can have up to three arrays.

To create a RAID array:

- 1 In the RAID Admin window, click Create Array.
- 2 Enter the management password and click OK.
- 3 In the Create Array window, select the RAID level you want to use.

This window provides brief details about each RAID level or drive when you click the button for a RAID level or put the pointer on the picture of a drive module.



- 4 Click the box on each drive you want to include in the array.

5 Choose the options you want.

- “Use RAID Now background initialization” lets you use the RAID array without waiting for initialization to finish. While the array is being initialized, data read and write speeds will be somewhat reduced. If this option is off, initialization takes place before the array is visible on the host system.

Note: The array cannot be seen by the host computer before initialization is complete unless RAID Now is used.

- “Use drive cache” enables the built-in write cache on each drive in the array. This option improves efficiency and speed of data transfer, but the drive cache contents will be lost if power to the system fails, unless you are using an uninterruptible power supply (UPS).

Important It is recommended that you use a UPS when you have drive cache enabled. Without UPS backup, you could lose data in the event of a power failure.

In the event of a power failure, the system detects UPS power and immediately flushes the data in the drive cache on a drive and then turns off the cache. When AC power is restored, the system turns on the drive cache again.

6 Check the summary of the array you’ve chosen and click Create Array.

Note: The RAID controller automatically treats any drive not assigned to an array as a global hot spare for arrays on that controller.

About Spare Drives

A spare drive is any drive that has not been assigned to an array. On the Xserve RAID, an unassigned drive is “hot” (always spinning and ready for use) and global (available to any array on its controller). A spare drive is used automatically by the RAID controller for its group of drives (either drives 1 to 7 or drives 8 to 14) whenever a drive within an array fails. (A controller can only use available drives on its side of the system; it cannot treat a drive on the other side as a hot spare.)

When you assign a previously unused drive to a new array, it no longer serves as a hot spare.

Modifying a RAID Array

Once a RAID array is established, you cannot change its type or add and remove drives from it. You can turn the drive cache on or off.

To modify a RAID array, you must back up all data in the array, delete the array, and create a new array with the parameters you want.

Rebuilding a RAID Array

If a drive fails, or an interruption in drive-to-controller communication occurs, data availability is unaffected, but the data is no longer protected. The array is in a degraded state. The RAID controller that controls the affected array will automatically attempt to reconstruct the data in order to return the system to a protected state. For example, if a hot spare drive is available when a drive fails in an array, the controller takes the available drive and integrates it into the array. The controller then rebuilds the RAID array using the new drive.

Array performance will be diminished until the drive is rebuilt. During this rebuilding process, an indicator on the drive module being added to the array alternately flashes amber and green. If an array is rebuilding or degraded, a message with that information appears in the message section of the RAID Admin window. The button beside the system name also changes color (to yellow or red) to indicate a problem.

The Xserve RAID system automatically rebuilds a RAID array in certain instances.

- If you have created a protected array (RAID 1, 3, 5, or 0+1) and you have an unassigned drive (a hot spare), each RAID controller automatically uses the spare drive to rebuild the array if a drive in the array fails.
- If no hot spare drive is available on the RAID controller, the array operates in a degraded state until you replace the failed drive.
- If you have a RAID 0 array, the system cannot rebuild the array in the event of a drive failure or other interruption. All data on the array will be lost.

Deleting a RAID Array

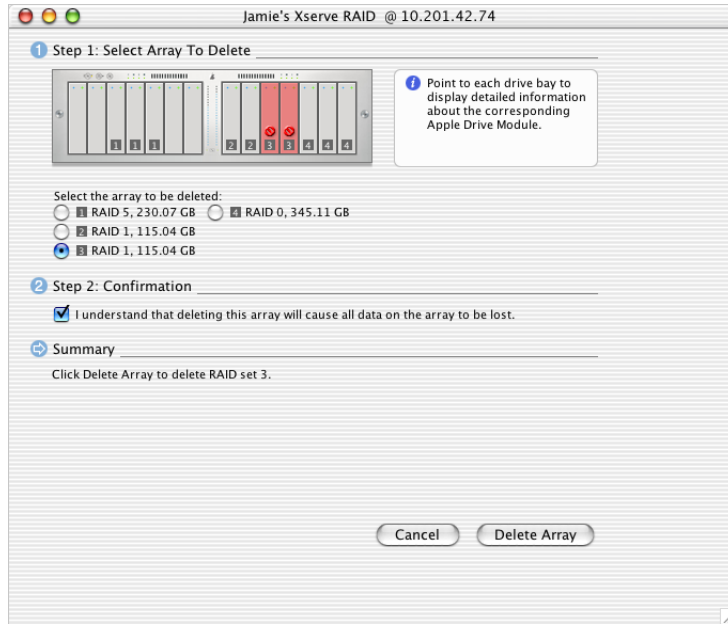
You delete a RAID array in the Delete Array window.

Warning Be sure to back up all data before you delete an array. If you delete an array without first backing up all the data stored on the array, you will lose that data with no possibility of recovery.

To delete an array:

- 1 In the RAID Admin window, click Delete Array.
- 2 Enter the management password and click OK.

- 3 In the Delete Array window, click the button for the array you want to delete.
The drives for that array turn red in the picture of the system.



- 4 Click the confirmation checkbox to verify that you want to remove the array.
- 5 Click Delete Array (or click Cancel if you don't want to delete the array).

Formatting and Mounting Arrays on a Host System

Creating an array creates a virtual device without a file system. You add a file system to each RAID array on the host system using Disk Utility. The array appears in Disk Utility as an unformatted disk.

Disk Utility is part of Mac OS X (or Mac OS X Server) and is stored in the Utilities folder inside the Applications folder.

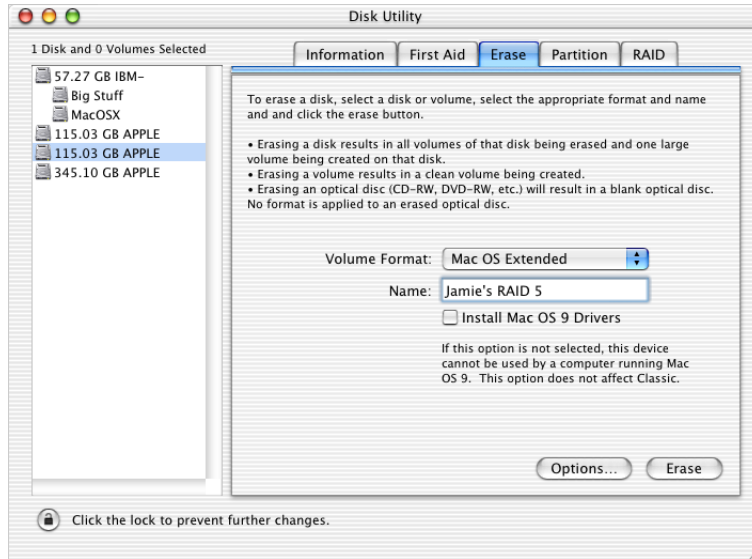
Important You must use Disk Utility on the host system to format arrays and mount them. This procedure cannot be done remotely with Disk Utility.

To format and mount an array on the host system:

- 1 Restart the host system.

In some instances, restarting the host system may not be necessary, but if you are creating or adding arrays, you generally must restart before the arrays are visible in Disk Utility.

- 2 Open Disk Utility on the host system.
- 3 Select the array in the list at the left side of the window.



- 4 Click the Erase tab.
- 5 Choose a format for the array from the Volume Format pop-up menu.

Note: You can take advantage of disk journaling by using the journaled volume format. Journaling is a technique that helps protect the integrity of HFS+ disks in RAID arrays. It both prevents a disk from getting into an inconsistent state and expedites disk repair if the system fails. Performance diminishes slightly when journaling is on.

When you enable journaling on an array, a continuous record of changes to files on the disks in the array is maintained in the journal. If your system stops running because of a power failure or some other problem, when you restart the system the journal is used to restore the array to a known good state. Although you may experience loss of user data that was buffered at the time of the failure, the file system is returned to a consistent state. In addition, restarting the system is much faster.

If you are using Mac OS X Server, you can also turn journaling on or off for an array at any time in the Information section of Disk Utility.

- 6 Type a name for the array.

- 7 Click Erase and confirm your decision by clicking Erase again.

Once formatting is complete, the array mounts on the host system.

Repeat this procedure for each new array.

Note: If you want to add software RAID to two or more arrays, you can skip this formatting procedure and instead use the RAID section of Disk Utility to stripe or mirror the arrays together in a set. This procedure also formats and mounts the resulting array. See “Adding Software RAID to Two or More Arrays” on page 24 for details.

Masking Drives on Multiple Host Systems (LUN Masking)

If you have two or more host computers connected to an Xserve RAID system through a switch, you must “map” each array to a specific host computer. You also “mask” arrays you don’t want to be visible to that host.

By mapping arrays to specific host computers and masking others off from a host, you avoid the possibility that more than one host user could write data on an array and possibly corrupt the array or otherwise lose data.

You use RAID Admin to map and mask arrays, which is also known as “LUN masking.” LUN is an acronym for “logical unit number,” which is a device addressing scheme.

About the World Wide Port Name

To map and mask arrays, you must provide a World Wide Port Name (WWPN). This name is a unique 16-character identifier assigned to each of the two ports on the Apple Fibre Channel PCI Card. The specific WWPN you need for an array is the one for the port on the card that is connected to the RAID controller for your array. (For more information about the Apple Fibre Channel Card and its connections to the Xserve RAID system, see Chapter 4, “Connecting Xserve RAID to a Host System and a Network,” in the *Xserve RAID User’s Guide*.)

You use the Fibre Channel Info application provided on the Xserve RAID Admin Tools disc to locate the WWPN for each port on the Apple Fibre Channel PCI Card.

Locating the WWPN With Fibre Channel Info

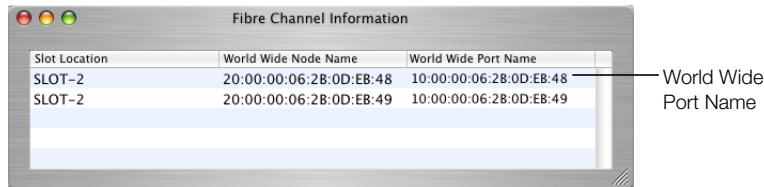
To find the WWPN for a port on your host system's fibre channel card using Fibre Channel Info:

- 1 Copy the Fibre Channel Info application from the "Mac OS X Utilities" folder on the Xserve RAID Admin Tools disc to your host computer.

Note: You must use this application on the host computer to locate the WWPN for each port on the Apple Fibre Channel PCI Card in that computer.

- 2 Open Fibre Channel Info on the host computer.

The application displays Word Wide Port Name (on the right side of the window), as well as the node name and the slot in which the fibre channel card is installed.



Note: The application locates a WWPN for each of the two ports on the fibre channel card. You may need to experiment by using both of these names to map the arrays you want to show on certain host computers and mask the arrays you want to hide.

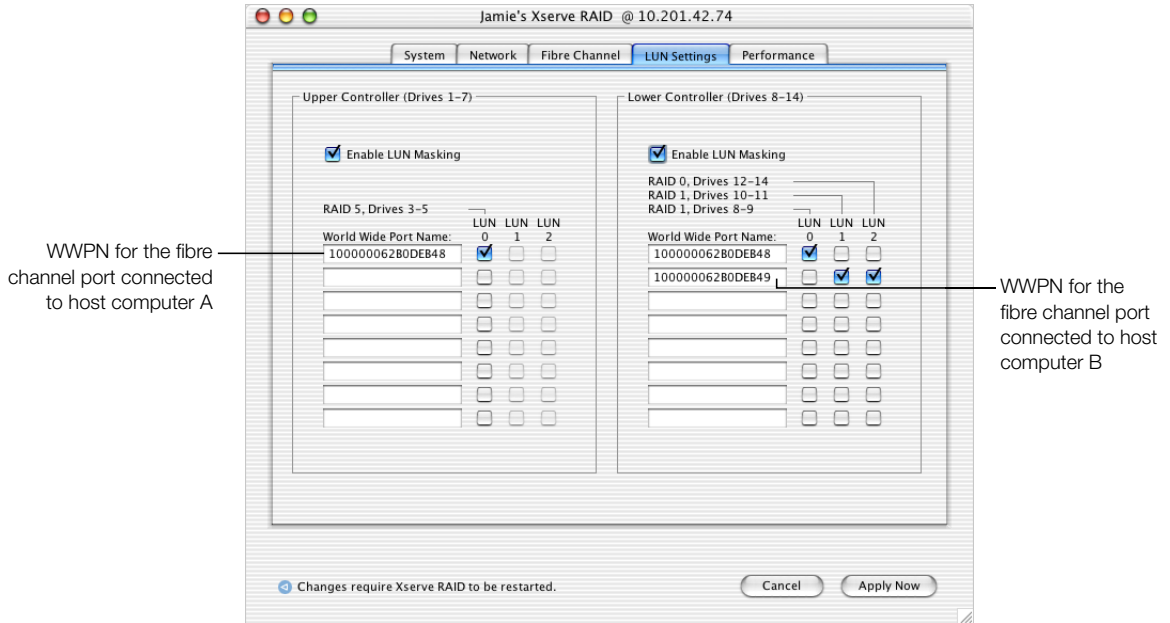
Setting Up LUN Masking With RAID Admin

Once you have the WWPN, you enter it in the LUN Settings window of RAID Admin.

To set up LUN masking:

- 1 In RAID Admin, click Settings.
- 2 Enter the management password and click OK.

3 Click the LUN Settings tab.



4 In the LUN Settings window, click Enable LUN Masking for one or both controllers.

5 Enter the WWPN for the desired port on the fibre channel card in your host system.

If you don't know which of two names will work, enter one and complete the steps below. If the result was not what you wanted, repeat this procedure using the second WWPN.

6 Click one or more of the LUN buttons for the arrays you want to map to the host system associated with that WWPN. Checked items are mapped to the host computer connected to the fibre channel port with that WWPN and will be visible on that computer. Items that are not checked are masked from that host computer.

- A LUN is the same as an array (or a RAID set). RAID Set 1 in the Arrays & Drives tab is the same as LUN 0 in the LUN Settings window.
- If a LUN number is checked, that LUN is mapped to the host computer associated with the corresponding WWPN (and is masked, or hidden, from other host computers).
- If a LUN number is not checked, that LUN is masked from the host computer associated with the corresponding WWPN.
- If a LUN button is dimmed, no corresponding array has been set up.

Note: You can create up to three arrays on each controller; they are numbered LUN 0 to LUN 2.

- 7 Repeat this procedure for any WWPN identifiers for which you want to map and mask arrays.
- 8 Click Apply Now.

The LUN masking takes effect when the Xserve RAID system restarts.

Note: You do not have to map an array to the host computer that was used to create the array. You can map an array to any host computer that is connected to the Xserve RAID system on which the array resides.

Adding Software RAID to Two or More Arrays

Once you've set up arrays with RAID Admin, you can add either striping or mirroring to two or more arrays using the Disk Utility application. Disk Utility is part of Mac OS X (or Mac OS X Server) and is stored in the Utilities folder inside the Applications folder.

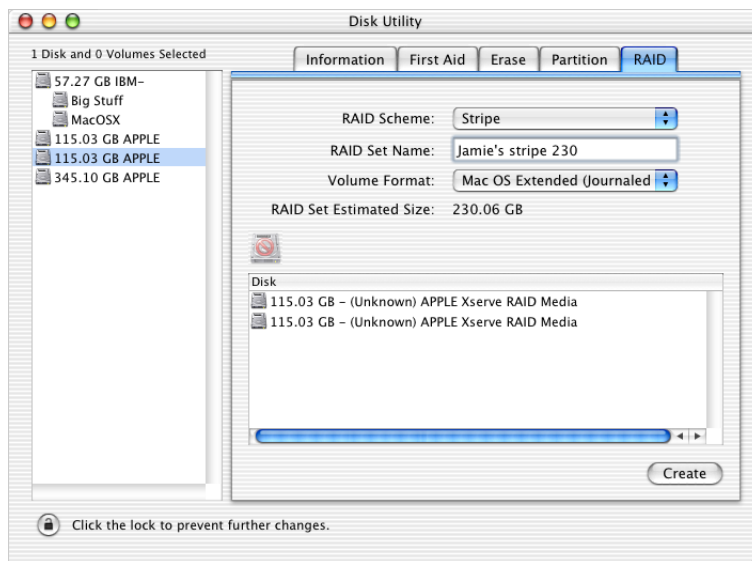
Adding software striping to RAID arrays increases efficiency of data transfer and storage. Adding software mirroring to RAID arrays increases data protection.

Note: You must use Disk Utility on the host computer to add software RAID to two or more arrays.

To add software RAID to two or more arrays:

- 1 Open Disk Utility on the host system and click the RAID tab.
- 2 Drag the arrays you want to stripe or mirror from the left side of the window to the Disk list at the center of the window.

Note: You must use two or more arrays to create a software RAID set.



- 3 Select the arrays in the Disk list.
- 4 Choose Stripe or Mirror from the RAID Scheme menu.
- 5 Enter a name for the new software RAID set.
- 6 Choose a format for the array.

Note: You can take advantage of disk journaling by using the journaled volume format. Journaling is a technique that helps protect the integrity of HFS+ disks in RAID arrays. It both prevents a disk from getting into an inconsistent state and expedites disk repair if the system fails.

When you enable journaling on an array, a continuous record of changes to files on the disks in the array is maintained in the journal. If your system stops running because of a power failure or some other problem, when you restart the system the journal is used to restore the array to a known good state. Although you may experience loss of user data that was buffered at the time of the failure, the file system is returned to a consistent state. In addition, restarting the system is much faster.

If you are using Mac OS X Server, you can also turn journaling on or off for an array at any time in the Information section of Disk Utility.

- 7 Click Create.

Once you've created your RAID arrays, you can use RAID Admin to monitor the Xserve RAID system.

Monitoring Status and Adjusting Settings

You monitor the status of your Xserve RAID system with the RAID Admin application. You can also adjust most settings with this software.

Monitoring System Status

RAID Admin displays a variety of information about your system as it is operating.

Adding a System to the Monitoring List

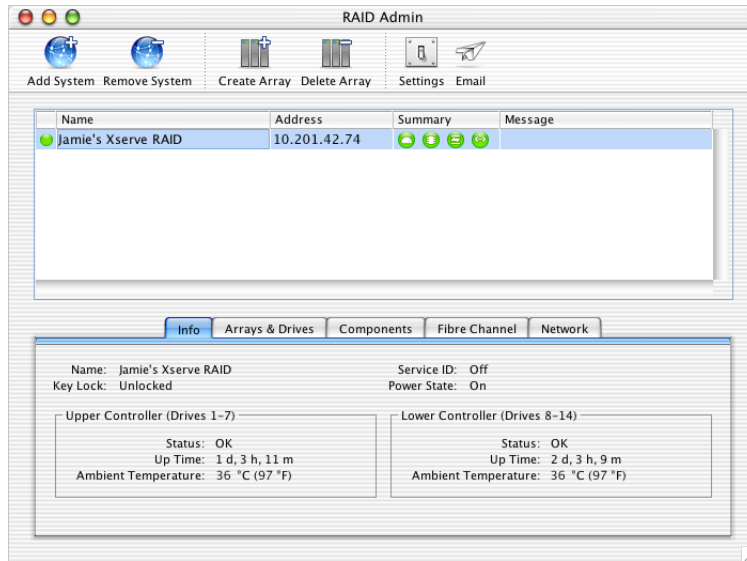
You can monitor many systems at the same time. You simply need to add each one to the monitoring list.

See “Connecting to the System” on page 8 for details on adding a system to the list.

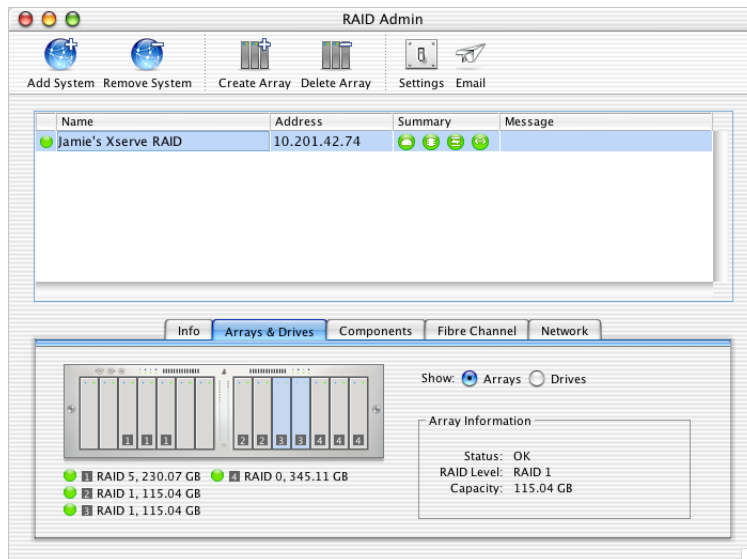
Getting System Information

To get details about the system’s operation, open RAID Admin and add the system to the monitoring list. Click a tab in the center of the window to display information for that category.

- *Info* reports system name, lock status, controller details, and whether there is a problem or power failure.



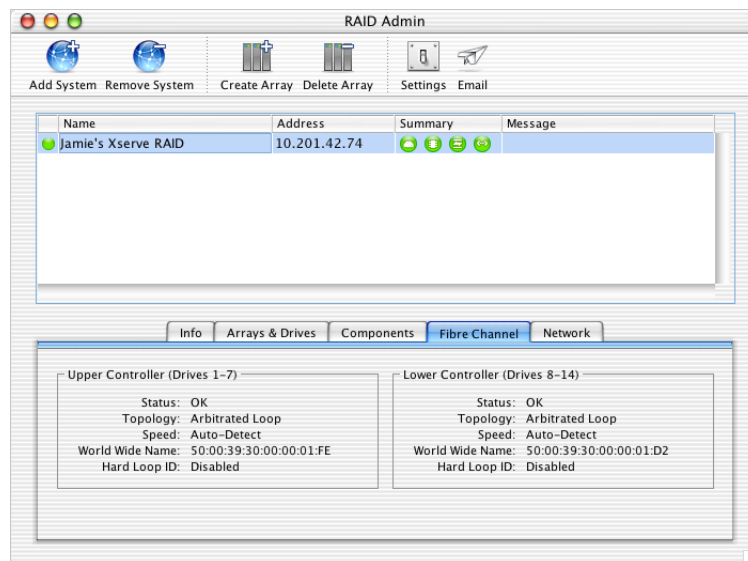
- *Arrays & Drives* shows details of each array and the drives in use and available. Click Show Drives and then click an array in the picture to see details of the array. Click Show Drives and then click a drive to see details of that drive.



- *Components* shows the operating information about the power supplies, RAID controllers, cooling modules, and cache backup batteries. You click the component to view its details.

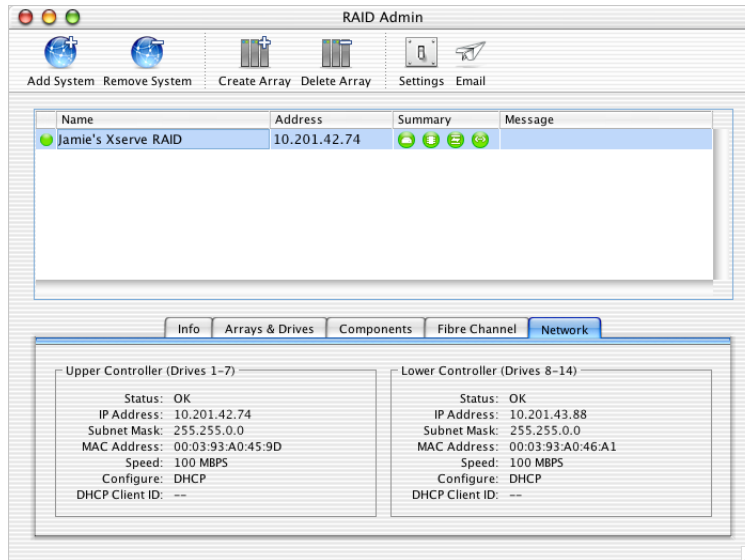


- *Fibre Channel* shows information about each RAID controller and the type of fibre channel connection in use.



Note: The World Wide Name is not the same as the World Wide Port Name (WWPN) used for LUN masking. See “Masking Drives on Multiple Host Systems (LUN Masking)” on page 21 for information about LUN masking and WWPN.

- *Network* displays the IP address and related network details for each RAID controller.



Removing a System From the Monitoring List

You can easily take a system off the monitoring list.

Note: Avoid removing a system from the list if you don't know its IP address or password. If you remove a system, you must supply that information to list it again.

- To remove a system from the monitoring list, select it in the list and click Remove System.

Changing System Settings

You can adjust most settings for the Xserve RAID system while the system is operating. In a few instances, you must restart the system for a change to take effect.

Adjusting Basic Information and Network Settings

See “System Name and Contact Information” on page 10 for instructions on adjusting basic system settings, including changing passwords for Administrator and Guest access.

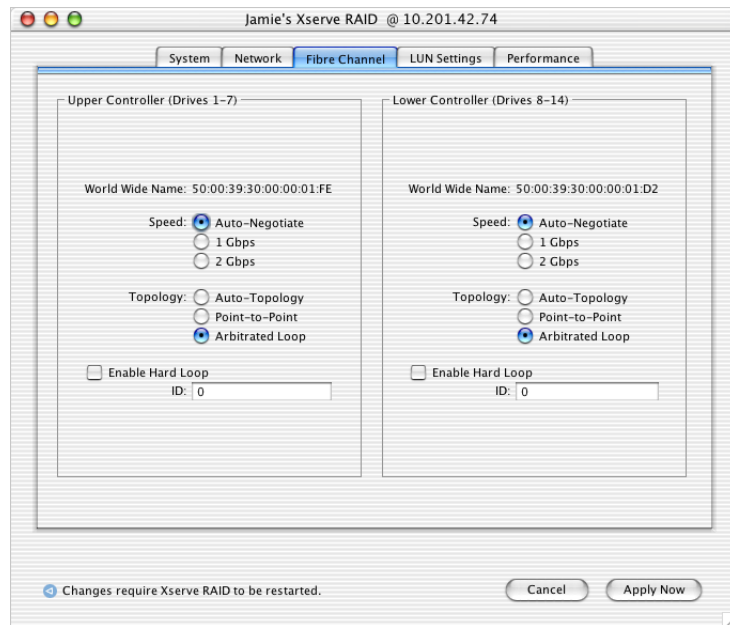
See “Network Address” on page 11 for instructions on adjusting the network information.

Adjusting Fibre Channel Speed and Topology

In most instances, the default settings for fibre channel communications are the most appropriate ones. If you have a fibre channel switch or a fixed transmission path among a group of systems, you may want to use one of the other fibre channel options.

To adjust the fibre channel settings:

- 1 Open RAID Admin and click Settings.
- 2 Enter the management password and click OK.
- 3 In the Settings window, click the Fibre Channel tab.



- 4 Click buttons for the options you want to change.
 - Change the Speed setting if you want to enhance or limit transmission speed.
 - Change the Topology option if your system is connected to a switch or you have a fixed network arrangement. Consult your network administrator if you aren't sure whether to change this setting.
- 5 Click Apply Now.
- 6 In the confirmation window, click OK.

Note: The fibre channel changes take effect when the Xserve RAID system restarts.

Adjusting LUN Masking

See “Masking Drives on Multiple Host Systems (LUN Masking)” on page 21 for details on LUN masking for systems that are connected to a switch and have multiple hosts connected to the switch.

Adjusting Drive Cache and Controller Cache

RAID Admin lets you turn on two separate types of cache to enhance performance of your Xserve RAID system.

- *Drive cache* enables the built-in write cache on each drive in the array. This option improves efficiency and speed of data transfer, but the drive cache is not backed up should the system lose power unless you are using an uninterruptible power supply (UPS).

Important It is recommended that you use a UPS when you have drive cache enabled. Without UPS backup, you could lose data in the event of a power failure.

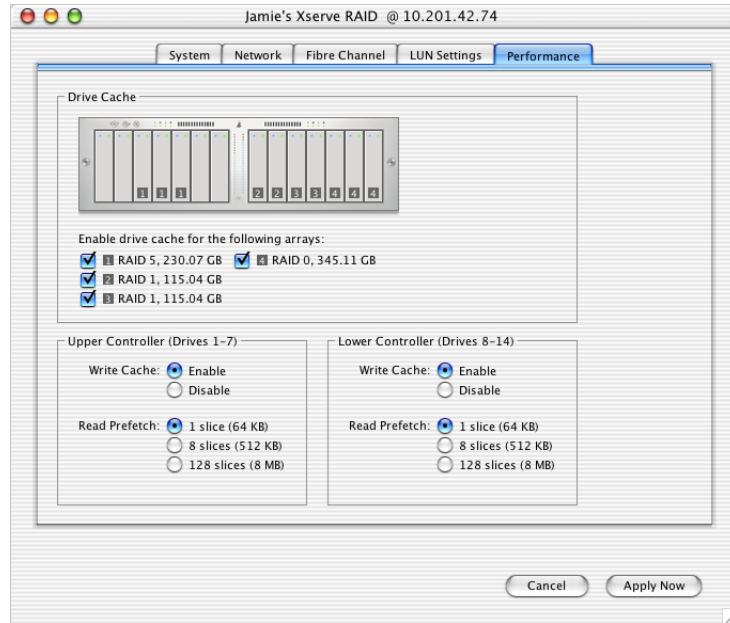
- *Controller cache* is a write cache used by the RAID controller. This cache is backed up by the optional Xserve RAID Cache Backup Battery Modules.

Important It is recommended that you have the optional controller cache backup battery modules installed if you use controller cache. Using controller cache with no battery backup could result in data loss if there is a power failure.

To set up drive cache and controller cache:

- 1 Open RAID Admin and click Settings.
- 2 Enter the management password and click OK.

- 3 Click the Performance tab.



- 4 To set up drive cache, click buttons for the array for which you want to enable or disable the drive cache.
- 5 To set up controller cache, click the button you want for Write Cache and Read Prefetch for each controller.
 - *Write Cache* is used to complete data transactions from the host computer before actually writing the data to the drives.
 - *Read Prefetch* anticipates that data should be retrieved from the arrays in sequential order and “reads ahead.” A large Read Prefetch is recommended for video playback; a small Read Prefetch is recommended for database applications.
- 6 Click Apply Now.
- 7 In the confirmation window that appears, click OK.

Note: Drive cache and controller write cache are required for applications that have a very high throughput, such as high-resolution video editing. UPS backup for drive cache is highly recommended.

Using System Commands

Occasionally you may encounter a problem or situation in which you need to shut down the Xserve RAID system or restart one of the RAID controllers or coprocessors. These system commands are located in the System menu of RAID Admin.

The system commands include

- Shutdown, which shuts down the system completely. When you shut down the system the data held in a cache is written on a disk before the system powers off.

Note: Use the Shutdown command if the Xserve RAID system will be turned off for more than 72 hours. Shutting down with this command turns off the system and the optional cache backup batteries. If you turn off the system using the power button, the cache backup batteries remain on and could become discharged.

- Power Up, which starts up the system when it is in standby mode.
- Restart the Upper or Lower RAID Controller.
- Restart the Upper or Lower Management Coprocessor.

Note: Use the Restart system commands with care, because any of them may disrupt the orderly transmission and storage of data.

Turning the System Identifier On or Off

You can use RAID Admin to turn on the system identifier light should you want to locate a particular Xserve RAID system or assist another administrator in finding that system. You can also turn off the system identifier when it's on.

To turn the system identifier on or off:

- 1 Choose Toggle Service ID from the System menu.
- 2 Enter the management password and click OK.

This command turns the system identifier on when it's off or off when it's on.