

BOGEN®

COMMUNICATIONS, INC.

1.5-WATT AMPLIFIER

GA-2

Bogen Model GA-2 is a rugged and compact 1.5 watt amplifier designed to meet the requirements of continuous low-power audio applications. It is ideally suited for telephone line "music-on-hold" amplification. It can be used to drive monitor speakers, headphones, or as a line amplifier. With accessory transformer WMT-1A connected to the input, the GA-2 will provide amplification for a 600-ohm telephone line.

The amplifier provides a high level input with screwdriver-adjustable volume control, and both an 8-ohm and 600-ohm output. The input is available at either a phono jack or screw terminals. Sensitivity for full output is 50mV. Outputs are available via screw terminals. The GA-2 is UL listed.

INSTALLATION

UNPACKING

The amplifier was carefully checked before leaving the factory. Inspect the shipping container and unit closely for indication of improper handling; if the unit has been damaged, make an immediate claim to the distributor from whom it was purchased. If the amplifier was shipped directly to you, save all shipping material, notify the carrier immediately and place your claim.

TYPICAL APPLICATIONS

Model GA-2 can be used to interface the "music-on-hold" facilities of various telephone systems to the output of a tuner or receiver.

Modern electronic key systems and PBXs with provisions for "music-on-hold" require either 600-ohm, or 8-ohm input to their "MOH" inputs.

Figure 1 shows typical wiring for connecting Bogen Series TP Tuner or Series RM Receiver into a music-on-hold system.

When used as a line amplifier, the 600-ohm balanced, or 8-ohm output of the GA-2 can be used to drive the input of power amplifier(s) remotely located from the music source. Figure 2 illustrates use of Model GA-2 as a multiple headphone driver. With this arrangement the amplifier can drive up to 20 pairs of headphones.

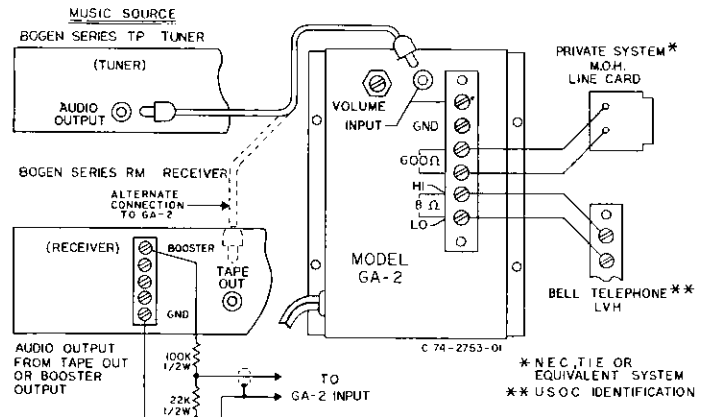


Figure 1 — Connection Diagram for Tuner or Receiver to Music-On-Hold

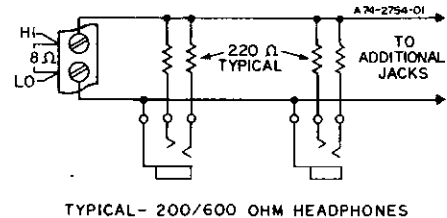


Figure 2 — Typical 200/600 Ohm Headphones

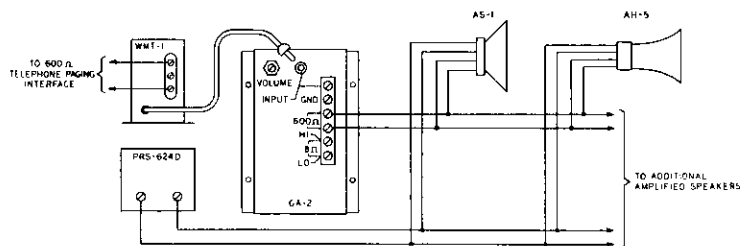


Figure 3 — Typical Amplified Speaker System

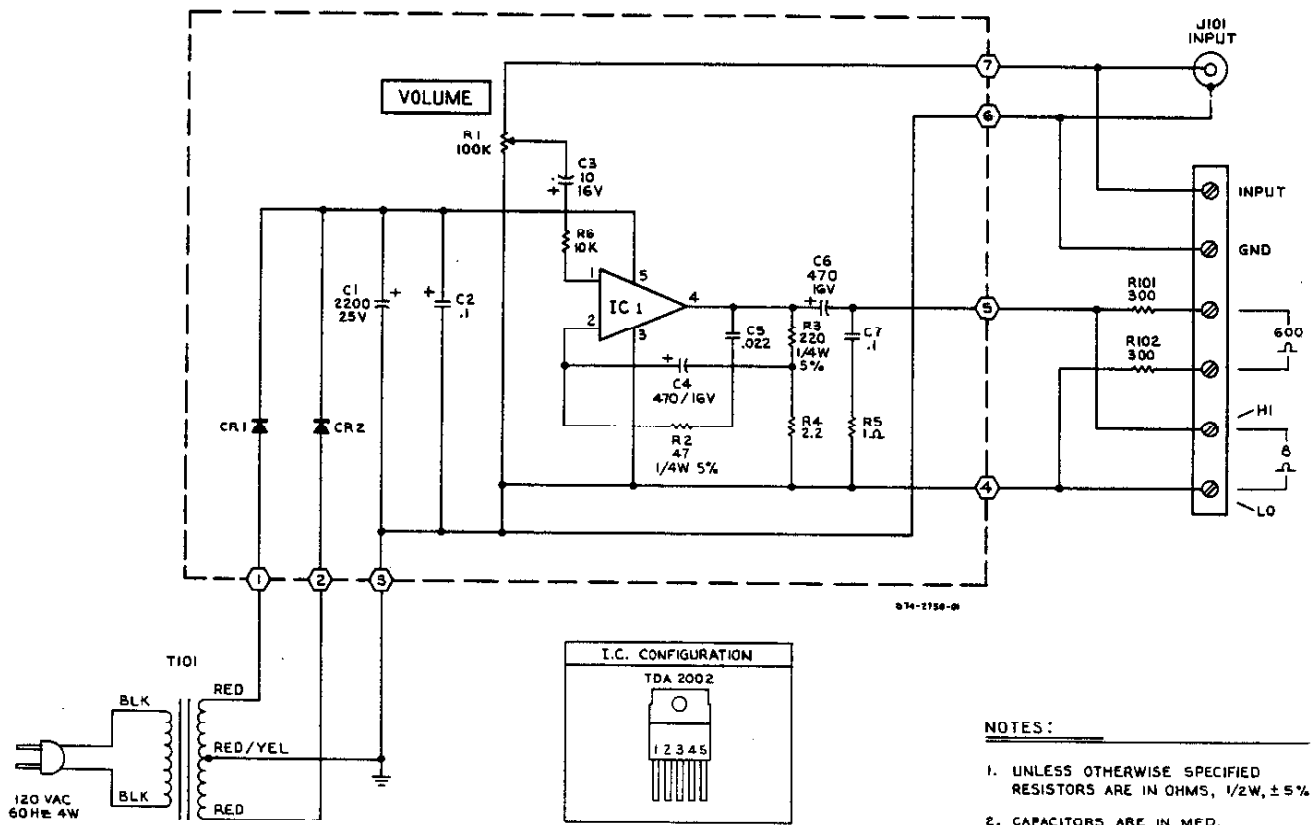


Figure 4 — GA-2 Schematic Diagram

CAUTION

To prevent overdriving an amplified speaker system, use the following setup procedure.

1. Set all of the zone amplified speaker volume controls to the maximum "ON" position.
2. Adjust the GA-2 output to a level slightly louder than is normally required at the speaker.
3. Adjust the individual amplified speaker volume level control to the desired volume level.

MAINTENANCE

CAUTION

There are no user-serviceable parts within the unit. To avoid an electrical shock hazard, have all internal servicing performed by qualified service personnel only. The warranty will become void if repairs are made by other than the Bogen Service Department or authorized service agency.

BOGEN SERVICE

Our Service Department is interested in the maintenance of your Bogen equipment. In the event of any difficulty, do not hesitate to ask for our advice or assistance. Information may be obtained by writing to Service Department, Bogen Communications, Inc., 50 Spring Street, P.O. Box 575, Ramsey, New Jersey 07446.

When communicating with us, give the model and series designation of your unit. Describe the difficulty and include details on the electrical connections to associated equipment, and list such equipment. We will send you service information if the remedy appears simple. If service is required, we will send you the name and address of the nearest authorized Bogen Service Agency.

When shipping your unit, pack it well, using the original shipping carton or a similar carton and filler material, to prevent damage in transit. Send the unit, fully insured and prepaid, via UPS or other responsible carrier. It will be returned to you freight prepaid while in warranty.