

Outlook Add-in USB Software

Convenient call control from your PC using Microsoft Outlook®



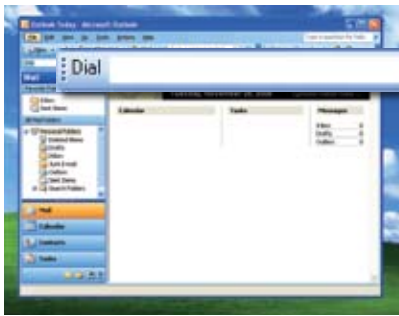
- Access phone features through Outlook drop-down menus
- Dial calls using Outlook's contacts list
- Schedule automatic call forwarding using Outlook's calendar
- Answer, hold, transfer, or drop calls from your PC
- Works with Panasonic KX-TDA IP PBX Systems and KX-T7633/T7636 Phones
- Easy to set-up and use

Panasonic
ideas for life

Convenient Call Control from your PC using Microsoft Outlook®



Simplify your office communications with the Outlook USB plug-in, which lets you control your KX-TDA IP PBX system through Outlook. The plug-in resides as a toolbar in Outlook where you can place internal and external calls, answer or drop calls, and more. You can even use many of Outlook's email features for the KX-TDA, like scheduling automatic call forwarding using the Outlook calendar, and making calls straight from your Outlook's contacts list. The Outlook USB plug-in brings two important communications tools together, saving you time and making your office communications easier than ever.



Outlook Contact Directory Dialing

This feature allows you to take full advantage of your Outlook contact directory. With the Outlook toolbar, you have the ability to make a call using the telephone numbers stored in your Outlook contact directory. Simply select the contact you wish to call and click on the "Dial number" box that appears in the toolbar area. A drop-down list will appear below the dial number box with the list of the numbers stored for the contact.

Forwarding

This feature allows you to manually forward your telephone to another location while you're on your PC. Simply click on the "forward" button and a forward settings window will appear with a list of preprogrammed forwarding destinations. You can select different forwarding destinations for internal and external calls.

Scheduled Forwarding

Scheduled forwarding allows you to schedule your telephone forwarding using the Outlook calendar. For example, if you take lunch from noon to 1:00 pm Monday through Friday, you can forward your phone each day during this hour to go

to voice mail or another destination of your choice. You can even set forwarding as a recurring subject based on the Outlook calendar settings.



Dial

The dial function allows you to place an internal or external call. You can enter a number using the computer keyboard or cut and/or paste a number from another directory. If you click on the drop down arrow to the right of the icon, your most recently dialed number will appear. To dial one of these numbers, simply click on it and the call will be placed.



Answer/Drop

The answer key allows you to answer incoming calls from your PC. To answer a call, click on the "Answer" button located in the toolbar or the Outlook Incoming Call window. You have the option to set up the system to pop-up the Incoming Call window. This window includes the caller name and phone number. You can also disable the pop-up completely.



Hold/Unhold

The hold/unhold function lets you place a call on hold. When you place a call on hold, the "Hold" button changes to "Unhold", which allows you to remove the call from hold.



Transfer/Transfer Complete

When you hit the "Transfer" button to transfer a call to another extension, it changes to "Transfer Complete". Dial the extension you want to transfer the call to, then click on "Transfer Complete".



Conference/Add to Conference

Using the Conference buttons, you can conference two calls. To conference, click on the "Conference" button. When you click on the "Conference" button, it changes to "Add to Conference". Dial the extension or outside number, then click the "add to conference" button to complete the conference.

Configuration and Setup

The Outlook Add-in USB software requires a USB connection between the host PC and the Panasonic KX-T7633 or the KX-T7636 telephones, equipped with a KLX-T7601 USB module.

Microsoft Outlook is a registered trademark of Microsoft in the U.S. and other countries.

Panasonic ideas for life

Panasonic Consumer Electronics Company
Division of Matsushita Electric Corporation of America
Executive Offices: One Panasonic Way, Secaucus, NJ 07094
(201) 348-7000 • www.panasonic.com/csd

Design and specifications subject to change without notice.

Panasonic Customer Service

9 am - 9 pm (EST) Monday – Friday
10 am – 7 pm (EST) Saturday & Sunday
1-800-211-Panasonic • consumerproducts@panasonic.com

CSD070058SS