

At your side.
brother®

DCP-310CN

Brother | DCP-310CN



DCP-310CN

- Colour Printer
- Colour Copier
- Colour Scanner
- PhotoCapture Centre™
- Integrated Networking



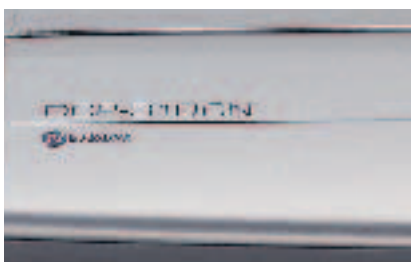
Always at your side

www.brother.co.uk

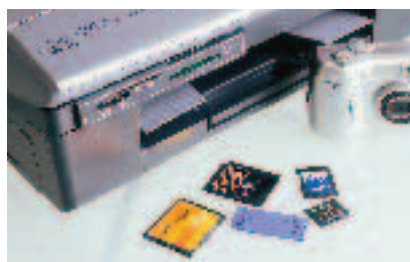
<http://solutions.brother.com/index-eu.html>

The DCP-310CN from Brother.

A stylish all-in-one machine with advanced network and PhotoCapture Centre™ features.



Network capability as standard



Direct photo printing from media card



Scanning at up to 19,200dpi interpolated resolution



DCP-310CN

- Colour Printer
- Colour Copier
- Colour Scanner
- PhotoCapture Centre™
- Integrated Networking

If space in your home or office is at a premium but you still need outstanding functionality, look no further than the easy-to-use DCP-310CN from Brother.

Designed to put you in control

From the very first time you use the DCP-310CN, a simple control panel ensures every function is easy to operate. Communication is clear through a two-line, backlit LCD that takes you simply and easily through each feature in every mode. With its USB cable connection neatly hidden inside, this slimline machine will fit into any corner to give you more space in your work area.

Quality printing with network capability

Whether in mono or colour, simple text or intricate charts, the DCP-310CN produces sharp prints at speeds that more than match the industry standard. Its true capability can best be seen when printing digital camera images where borderless printing produces photo quality results. Full networking capability allows printing from any network-connected PC or laptop, and reduces the expense of separate printers around the office or home.

- Up to 1,200 x 6,000dpi resolution
- Up to 20ppm mono print speed
- Up to 15ppm colour print speed
- Borderless printing
- Network as standard
- 100 sheet front loading paper tray

On-demand copying from a variety of sources

Like everything about the DCP-310CN, copying is made as easy as possible – whatever you want to duplicate. There is no need to switch on your PC or laptop when copies are required. An adjustable hinge allows bound documents to be copied with pin sharp results.

- Up to 600 x 1,200dpi resolution
- Adjustable hinge

Fully inclusive software for versatile scanning

An in-built scanner opens up so many options – especially when the latest software is included in the price of the machine. You can easily scan to e-mail, OCR, image, file, card and network capability brings the added advantage of scanning to desktops around the office or home.

- Up to 19,200dpi interpolated resolution
- One-touch scan to PC
- Scansoft® PaperPort® and OmniPage® software included
- Full network capability as standard

DCP-310CN

Multifunction machine

PhotoCapture Centre™

With digital photography becoming more and more popular; the DCP-310CN has all you need to enjoy the benefits of this new technology. Its media slots allow memory cards to be read without a plug-in card reader or the inconvenience of using the software on your computer to download your pictures. You can study a complete selection of thumbnails before you make your print selection, saving time and expense. You can also save and retrieve files via your media card, making this an additional and convenient data transfer tool. Full networking capability allows all images to be saved or accessed from any network-connected computer.

The DCP-310CN is compatible with six of the most popular media cards.

- Compact Flash™
- Memory Stick Pro™
- SmartMedia™
- Secure Digital™
- Memory Stick™
- xD Picture Card™

Individual ink cartridges

Eliminating the frustration of having to throw away unused inks, Brother's colour inkjet machines provide separate ink cartridges for each colour. Now all you have to do is replace the empty colour cartridge reducing wastage and the cost per copy.



Cost-efficient individual ink cartridges



At your side.
brother®

Technical Specification

General		
Engine		Inkjet
Backlit LCD Display		2 lines x 16 characters with back-light
Back-up for clock		Keeps time and date backed up for 1 hour
Memory Capacity		16MB standard
Paper handling size		A4, LTR, LGL, EXE, A5, A6, Postcard, Envelope + additional sizes
Media Type		Plain, Inkjet, Glossy, Transparency
Paper Capacity	Standard paper tray	Up to 100 sheets
	Output paper capacity	Up to 25 sheets
Simultaneous Operation		(Print/Copy) (Print/Scan)
Colour Printer		
Speed		Up to 20ppm mono & 15ppm colour
Resolution		Max.1,200 x 6,000dpi
Borderless Printing		Borderless printing is available for A4/LTR/A6/Photo Card/Index Card/Post Card
Colour Enhancement		Brother Image enhancement allows you to custom colour output
Variable drop size		3 sizes for variable dot print with minimum droplet size of 3pL for enhanced quality printing
Colour Copier		
Speed		Up to 17ppm mono & 11ppm colour
Resolution		Up to 600 x 1,200dpi
Multi copy		Produces up to 99 copies of each original
Enlargement / reduction ratio		25% - 400% in 1% increments
N in 1		Compress 2 or 4 pages on to a single sheet
Poster Printing		Enlarge an image to print onto 3 x 3 pages for A4 size (available for A4 only)
Colour Scanner		
Resolution	Optical	Max. 600 x 2,400dpi
	Interpolated	Max. 19,200 x 19,200dpi (with XP special tool)
Scan speed		Scan speed is from 4 seconds Mono and from 6 seconds Colour (A4 size, 100 x 100dpi)
Grey Scale		256 shades of grey
Colour Depth	Input/Output	36/24 bit
'Scan' key		Allows the user to scan to e-mail, OCR, Image, File or Card
Interface(s)		
USB		USB 1.1 & 2.0 Full Speed connectivity as standard
External TAD Interface		Interface for connecting external telephone answering devices
Network Interface as standard		This model is supplied with a built in 10/100BASE-TX network interface
Wireless Network		Optional: NC-2200w Wireless USB Print/Scan Server is available as an option with this model
Media Card Drive		SmartMedia, Compact Flash, Sony Memory Stick, Sony Memory Stick Pro, Secure Digital, xD Picture Card
Acceptable Media Cards		
Supplies - Individual Ink Cartridges		
Supplied with standard yield cartridges. Pages in normal mode @ 5% coverage	Black	LC-900BK - approx 500 pages
	Cyan	LC-900C - approx 400 pages
	Magenta	LC-900M - approx 400 pages
	Yellow	LC-900Y - approx 400 pages
Weights & Dimensions		
Dimensions / Weight	With Carton	500(w) x 200(d) x 450(h) mm / 7.0kg
	Without Carton (open tray)	373(w) x 453(d) x 135(h) mm / 5.5kg
PhotoCapture Centre™		
Acceptable Media	SmartMedia	3.3v 4MB - 128MB
	Compact Flash	Type 1 only - 4MB - 2GB
	Memory Stick	16MB - 128MB (Duo with Adaptor)
	Memory Stick Pro	256MB - 1GB
	Secure Digital	16MB - 512MB (Mini SD with Adaptor)
	xD Picture Card	16MB - 512MB
Removable Disk Drive	Save & Retrieve files	Using any of the above listed media cards
Image format	Photo Print	JPEG
	Scan to Card	JPEG, PDF (colour) / TIFF, PDF (B&W)
Colour Enhancement		Brother image enhancement allows you to customize colour output
Network as standard		
Built in Network		10/100BaseTX Ethernet
Network Functions		Printing, Scanning and PhotoCapture Centre™
Network PhotoCapture Centre™		(View media card images through a LAN using Web browsing)

DCP-310CN	Scanner Resolution Upto DPI	TWAIN/WIA Driver	Scan to Image	Scan to E-mail	Scan to OCR	Scan to File	PhotoCapture Centre™	Printer Driver	Brother Control Centre 2.0	Status Monitor	Newssoft® Presto® Page Manager®	ScanSoft® PaperPort® 9.0SE
Microsoft Windows® 98(SE)/Me 2000 Professional XP	19200x19200 19200x19200 1200x1200**	TWAIN TWAIN WIA	✓ ✓ ✓	✓ ✓ ✓	✓ ✓ ✓	✓ ✓ ✓	✓ ✓ ✓	✓ ✓ ✓	✓ ✓ ✓	✓ ✓ ✓	✓ ✓ ✓	✓ ✓ ✓
Macintosh® OS 8.6 OS 9.x OS 10.2.4 or greater	19200x19200 19200x19200	TWAIN* TWAIN	✓ ✓	✓ ✓	✓ ✓	✓ ✓	✓ ✓	✓ ✓	✓ ✓	✓ ✓	✓ ✓	✓ ✓

MINIMUM SYSTEM REQUIREMENTS			AVAILABLE HARD DISK SPACE				
COMPUTING SYSTEM	OPERATING SYSTEM VERSION	PC INTERFACE	PROCESSOR SPEED	MINIMUM RAM	RECOMMENDED RAM	For Drivers	For Applications
WINDOWS®	98 (SE) Me	USB 10/100 BASE-TX	Pentium® II or equivalent	32 MB	64 MB	90 MB	130 MB
	2000 Professional XP			32 MB	64 MB	90 MB	130 MB
MAC®	OS 8.6 - OS 9.2		All base models meet minimum requirements	64 MB	64 MB	80 MB	200 MB
	OS 10.2.4 or greater			128 MB	160 MB	80 MB	200 MB

* These features are not available via the network
 ** Brother Scanner Utility enables to enhance up to 19,200 x 19,200dpi



Contact:



Brother UK Ltd
 Audenshaw, Manchester M34 5JD
 Tel:0870 830 4000 (National Rate Call) Fax:0870 830 4031
 Web-site: www.brother.co.uk
 Your calls to us may be monitored or recorded for training purposes.
 Specification correct at time of going to print. Brother is a registered trademark of Brother Industries Ltd.
 Brand product names are registered trademarks or trademarks of their respective companies.