



Before you can use the machine, please read this Quick Setup Guide for the correct setup and installation.

 WARNING	Warnings tell you what to do to prevent possible personal injury.
 CAUTION	Cautions specify procedures you must follow or avoid to prevent possible minor injuries.

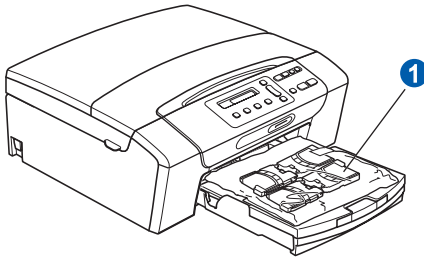

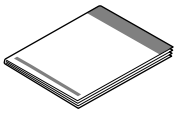
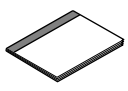


IMPORTANT

DO NOT connect the USB cable yet (if you are using a USB cable).



1


Unpack the machine and check the components

	 Inbox Ink Cartridges [x4] Black Yellow Cyan Magenta (Approx. 65% yield of the replacement cartridge) For details, see <i>Consumable items</i> in the <i>User's Guide</i> .	 Quick Setup Guide
 User's Guide	 CD-ROM	 Power Cord

WARNING

Plastic bags are used in the packaging of your machine. To avoid danger of suffocation, please keep these bags away from babies and children.

■ Most of the illustrations in this Quick Setup Guide show the DCP-375CW.

- a** Remove the protective tape and film covering the machine.
- b** Remove the plastic bag  containing the ink cartridges from on top of the paper tray.
- c** Make sure you have all components.

Note

- The components included in the box may differ depending on your country.
- Save all packing materials and the box in case for any reason you must ship your machine.
- You need to purchase the correct interface cable for the interface you want to use (for USB or network connection).

USB cable

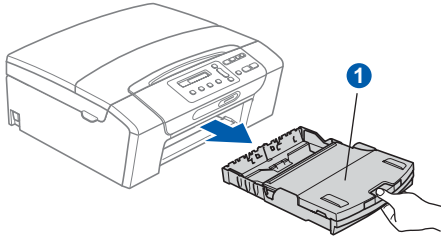
Please make sure you use a USB 2.0 cable (Type A/B) that is no more than 2 metres long (cable not included).

Network cable

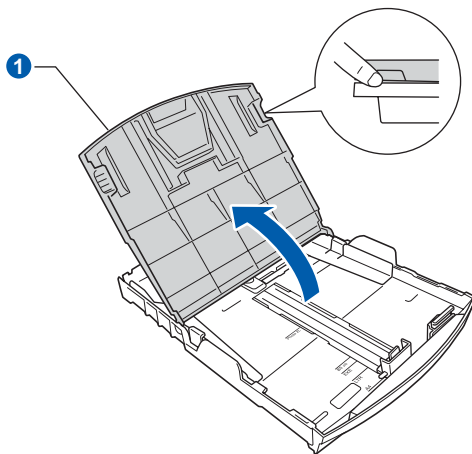
Use a straight-through Category5 (or greater) twisted-pair cable for 10BASE-T or 100BASE-TX Fast Ethernet Network.

2 Load plain A4 paper

- a** Pull the paper tray **1** completely out of the machine.

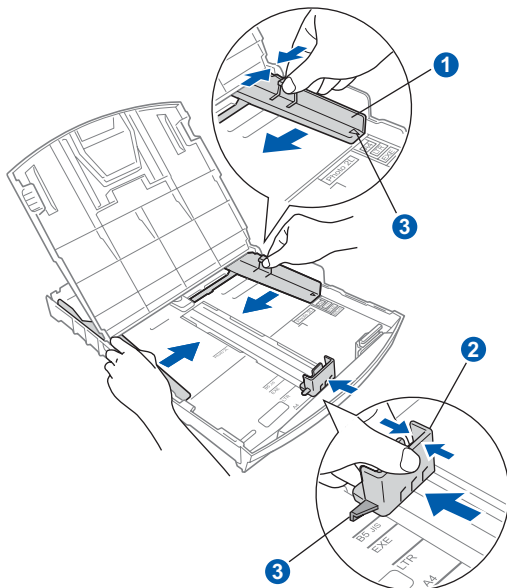


- b** Lift the output paper tray cover **1**.



- c** With both hands, gently press and slide the paper side guides **1** and then the paper length guide **2** to fit the paper size you are loading in the tray.

Make sure that the triangular marks **3** on the paper side guides **1** and paper length guide **2** line up with the mark for the paper size you are using.

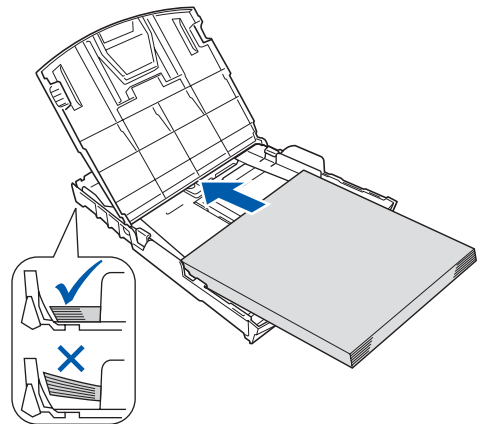


- d** Fan the stack of paper well to avoid paper jams and misfeeds.

- e** Gently put the paper into the paper tray print side down and top edge first. Check that the paper is flat in the tray.

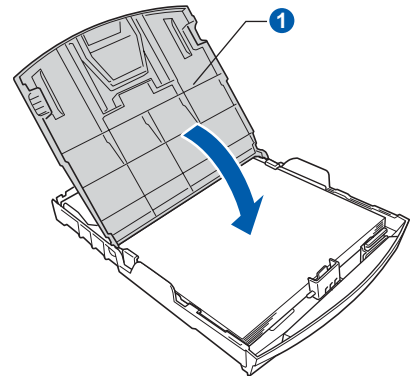
! IMPORTANT

DO NOT push the paper in too far.

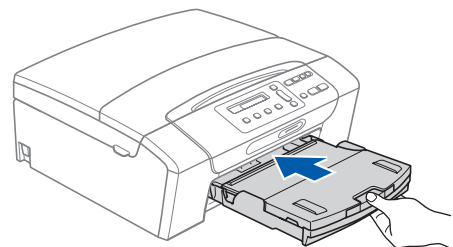


- f** Gently adjust the paper side guides to the paper with both hands. Make sure that the paper side guides touch the edges of the paper.

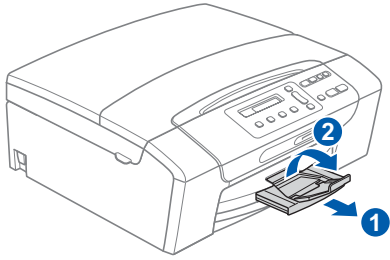
- g** Close the output paper tray cover **1**.



- h** *Slowly* push the paper tray completely into the machine.



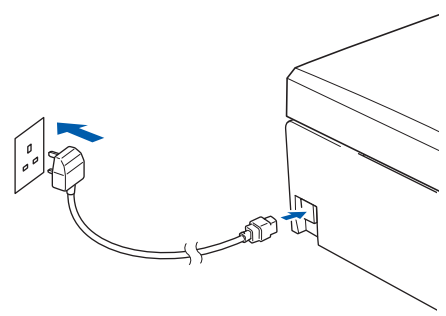
- i** While holding the paper tray in place, pull out the paper support **1** until it clicks, and then unfold the paper support flap **2**.



3 Connect the power cord

! IMPORTANT
DO NOT connect the USB cable yet (if you are using a USB cable).

- a** Connect the power cord.



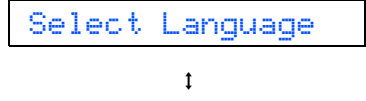
! WARNING

The machine must be fitted with an earthed plug.

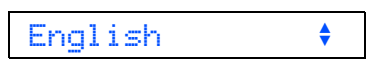
Note
The Warning LED on the control panel will stay on until you have installed the ink cartridges.

4 Choose your language

- a** When the LCD shows this message, press **OK**.



- b** Press **▲** or **▼** to choose your language and press **OK**.



- c** Press **▲** (Yes) to confirm the language setting.

🔍 If you set the wrong language, you can change the language after setting the date and time. (For details, see Changing LCD language in Chapter 3 of the User's Guide.)

5 Install the ink cartridges

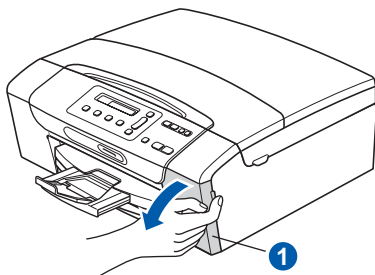
⚠ CAUTION

If ink gets in your eyes, wash them out with water at once, and if irritation occurs consult a doctor.

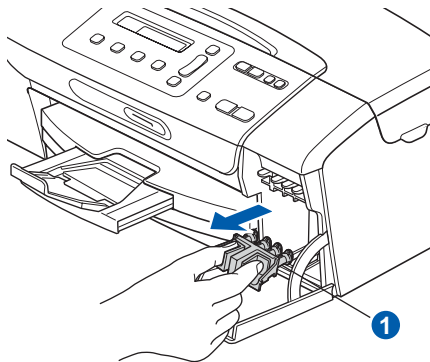
- a** Make sure that the power is turned on. The LCD shows:



- b** Open the ink cartridge cover ①.



- c** Remove the green protective part ①.

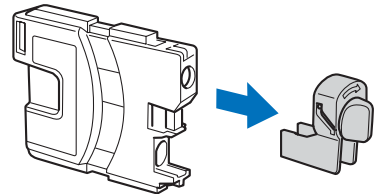
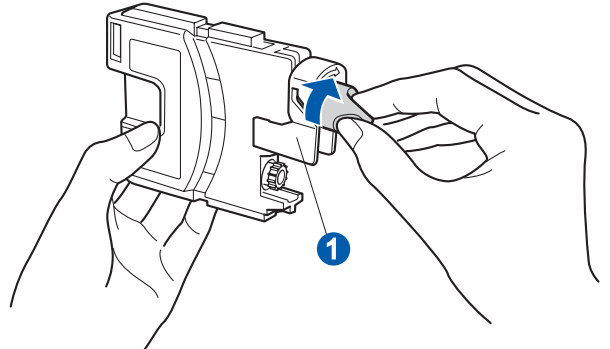
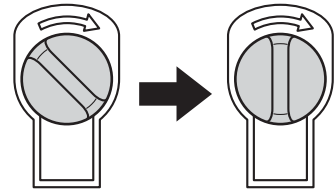


Note

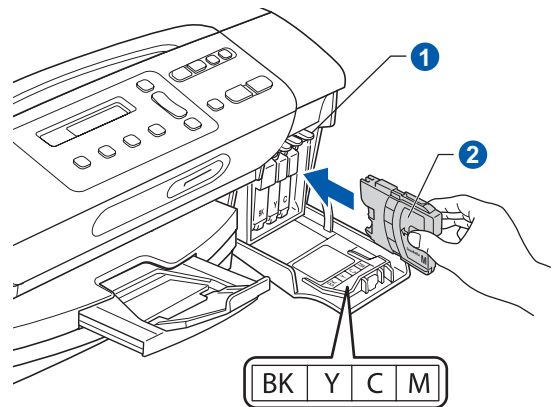
Do not throw away the green protective part. You will need it if you transport the machine.

- d** Unpack the ink cartridge.

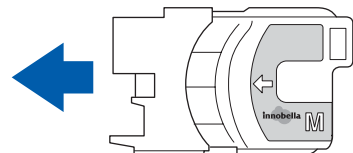
- e** Turn the green knob on the protective yellow cap clockwise until it clicks to release the vacuum seal, then remove the cap ①.



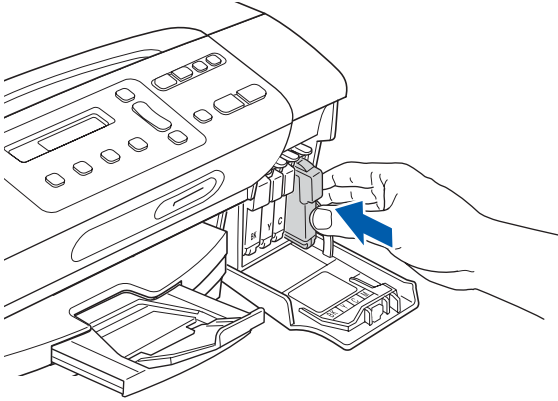
- f** Take care to match the colour of the lever ① with the cartridge colour ②, as shown in the diagram below.



- g** Install each ink cartridge in the direction of the arrow on the label.



- h** Gently push the ink cartridge until it clicks. After all the ink cartridges are installed close the ink cartridge cover.



Note

The machine will prepare the ink tube system for printing. This process will take approximately four minutes. Do not turn off the machine.

6 Check the print quality

- a** When the preparation process has finished, the LCD shows this message

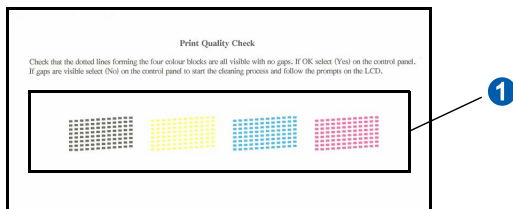
Set Paper and



Press Start

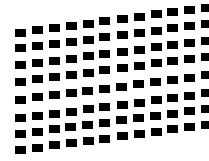
Press **Colour Start**.

- b** Check the quality of the four colour blocks ① on the sheet. (black/yellow/cyan/magenta)



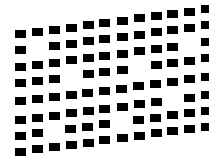
- c** If all lines are clear and visible, press ▲ (Yes) to finish the quality check and go to step 7.

OK



- If you can see missing short lines, press ▼ (No) and go to **d**.

Poor



- d** The LCD asks you if the print quality is OK for black and colour. Press ▲ (Yes) or ▼ (No).

Black OK?



▲ Yes ▼ No

Color OK?



▲ Yes ▼ No

After pressing ▲ (Yes) or ▼ (No) for both black and colour, the LCD shows:

Start Cleaning?



▲ Yes ▼ No

- e** Press ▲ (Yes), the machine will then start cleaning the colours.

- f** After cleaning is finished, press **Colour Start**. The machine starts printing the Print Quality Check Sheet again. Go back to **b**.

7 Set the LCD contrast (if needed)

If you are having difficulty reading the LCD from your position, try changing the contrast setting.

- a** Press **Menu**.
- b** Press **▲** or **▼** to choose 0.Initial Setup. Press **OK**.
- c** Press **▲** or **▼** to choose 2.LCD Contrast. Press **OK**.
- d** Press **▲** or **▼** to choose Dark or Light.

Contrast:Dark



Contrast:Light



- e** Press **OK**.
- f** Press **Stop/Exit**.

8 Set the date and time

Setting the date and time allows the machine to clean the print head regularly and maintain optimum print quality. It also allows the machine to name files created when using the Scan to Media feature.

- a** Press **Menu**.
- b** Press **▲** or **▼** to choose 0.Initial Setup. Press **OK**.
- c** Press **▲** or **▼** to choose 1.Date&Time. Press **OK**.
- d** Press **▲** or **▼** to enter the last two digits of the year, and then press **OK**.

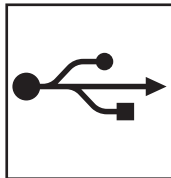
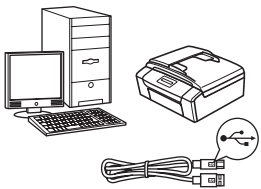
Year:2009

(e.g. Enter 0 9 for 2009.)

- e** Repeat for Month and Day, and Hours and Minutes in 24-hour format.
- f** Press **Stop/Exit**.

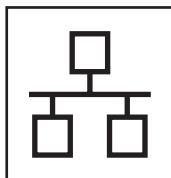
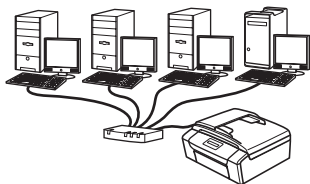
9

Choose your connection type



For USB interface cable

Windows[®], go to page 8
Macintosh, go to page 12

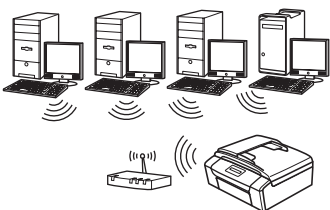


For Wired Network

Windows[®], go to page 14
Macintosh, go to page 19

Note

For Windows Server[®] 2003/ 2008, see the Network User's Guide on the CD-ROM.



For Wireless Network (DCP-373CW/375CW/377CW only)

Windows[®] and Macintosh,
go to page 22

Windows[®]
USB
Macintosh

Windows[®]
Wired Network
Macintosh

Wireless Network



For USB interface users (Windows® 2000 Professional/XP/XP Professional x64 Edition/ Windows Vista®)

10 Before you install

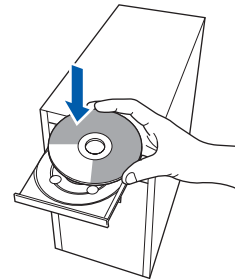
a Make sure that your computer is ON and you are logged on with Administrator rights.

! IMPORTANT

- DO NOT connect the USB cable yet.
- If there are any programs running, close them.
- Make sure there are no memory cards or a USB Flash memory drive inserted into the machine.
- The screens may differ depending on your operating system.
- The supplied CD-ROM includes ScanSoft™ PaperPort™ 11SE. This software supports Windows® 2000 (SP4 or greater), XP (SP2 or greater), XP Professional x64 Edition and Windows Vista®. Update to the latest Windows® Service Pack before installing MFL-Pro Suite.

11 Install MFL-Pro Suite

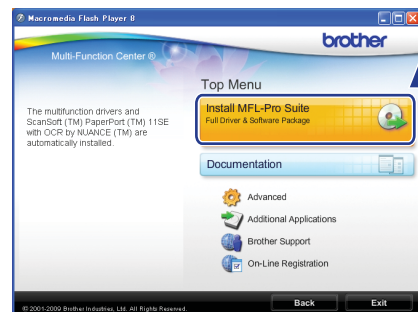
a Put the supplied CD-ROM into your CD-ROM drive. If the model name screen appears, choose your machine. If the language screen appears, choose your language.



Note

*If the Brother screen does not appear automatically, go to **My Computer (Computer)**, double-click the CD-ROM icon, and then double-click **start.exe**.*

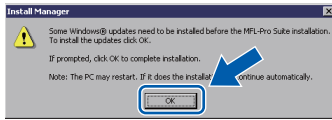
b The CD-ROM Top Menu will appear. Click **Install MFL-Pro Suite**.



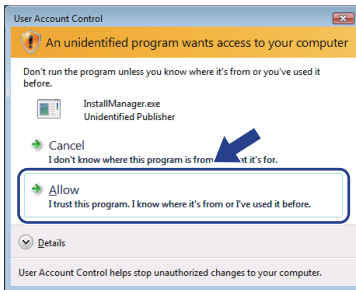


Note

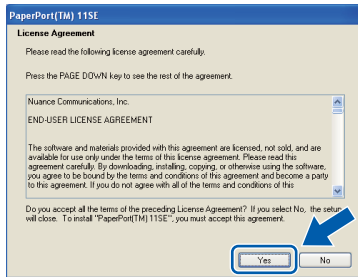
- If this screen appears, click **OK** and restart your computer.



- If the installation does not continue automatically, open the top menu again by ejecting and then reinserting the CD-ROM or double-click the **start.exe** program from the root folder, and continue from **b** to install MFL-Pro Suite.
- For Windows Vista®, when the **User Account Control** screen appears, click **Allow**.

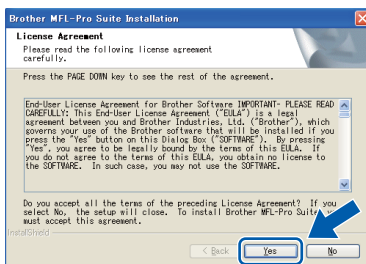


- When the ScanSoft™ PaperPort™ 11SE **License Agreement** window appears, click **Yes** if you agree to the Software License Agreement.



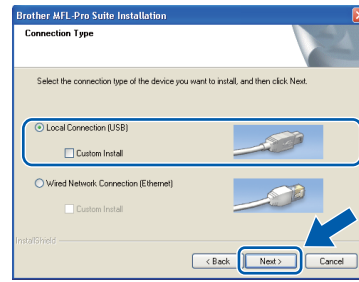
- The installation of ScanSoft™ PaperPort™ 11SE will automatically start and is followed by the installation of MFL-Pro Suite.

- When the Brother MFL-Pro Suite Software **License Agreement** window appears, click **Yes** if you agree to the Software License Agreement.

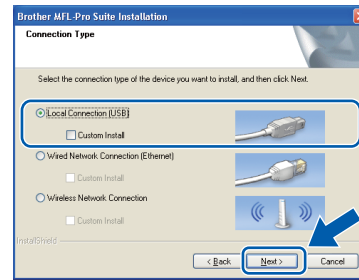


f

Choose **Local Connection**, and then click **Next**. The installation continues.



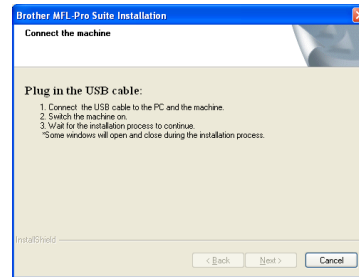
(DCP-365CN)



(DCP-373CW/375CW/377CW)

g

When this screen appears, go to the next step.



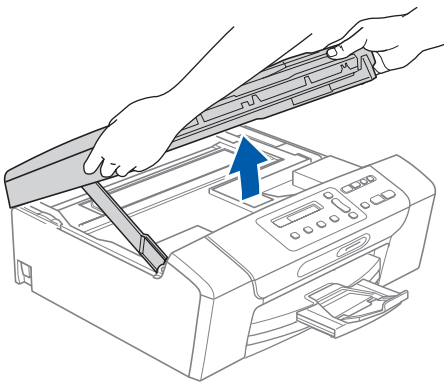



12 Connect the USB cable

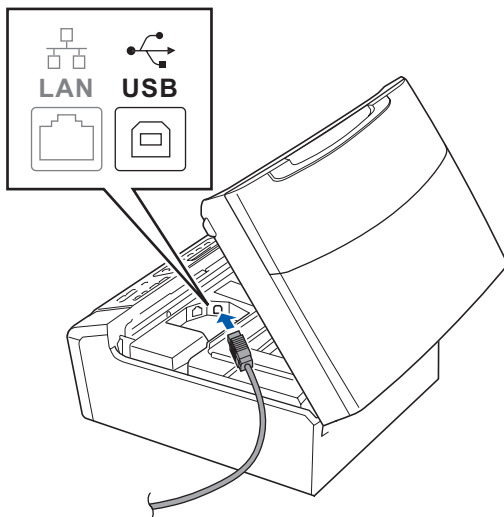
! IMPORTANT

- **DO NOT** connect the machine to a USB port on a keyboard or a non-powered USB hub.
- Connect the machine directly to your computer.

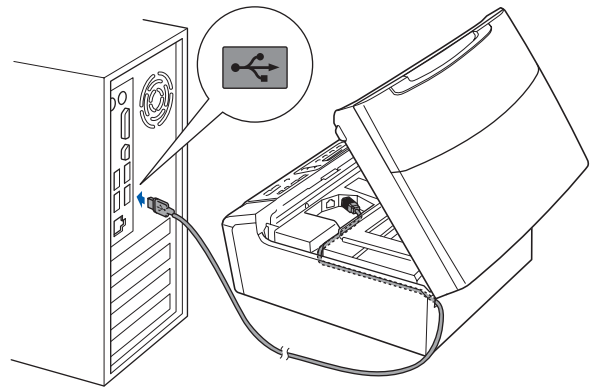
a Using both hands, use the plastic tabs on both sides of the machine to lift the scanner cover until it locks securely into the open position.



b Connect the USB cable to the USB socket marked with a  symbol. You will find the USB socket inside the machine on the right as shown below.



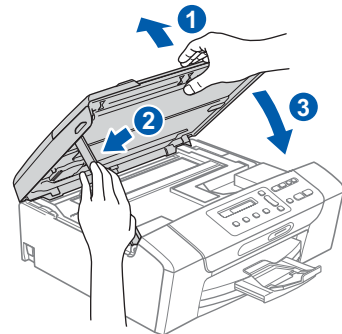
c Carefully guide the USB cable through the trench as shown below, following the trench around and toward the back of the machine. Then connect the cable to your computer.



! IMPORTANT

Make sure that the cable does not restrict the cover from closing, or an error may occur.

d Lift the scanner cover to release the lock **1**. Gently push the scanner cover support down **2** and close the scanner cover **3**.

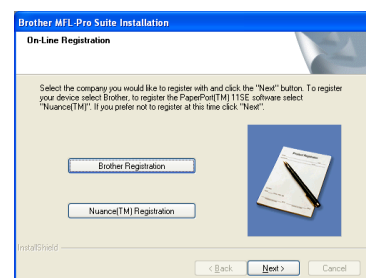


e The installation will continue automatically. The installation screens appear one after another.

! IMPORTANT

DO NOT cancel any of the screens during the installation. It may take a few seconds for all screens to appear.

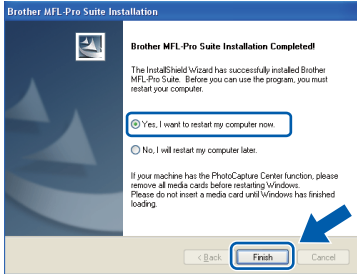
f When the **On-Line Registration** screen is displayed, make your selection and follow the on-screen instructions.





13 Finish and restart

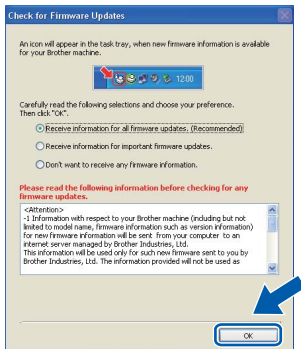
- a Click **Finish** to restart your computer. After restarting the computer, you must be logged on with Administrator rights.



Note

If an error message appears during the software installation, run the **Installation Diagnostics** located in **Start/All Programs/Brother/DCP-XXXX** (where DCP-XXXX is your model name).

- b Choose the firmware update setting and click **OK**.



Note

Internet access is required for the firmware update.

Finish The installation is now complete.

Now go to

Proceed to Install Optional Applications on page 33.

Note

XML Paper Specification Printer Driver
The XML Paper Specification Printer Driver is the most suitable driver when printing from applications that use the XML Paper Specification documents. Please download the latest driver by accessing the Brother Solutions Center at <http://solutions.brother.com/>.



For USB interface users (Mac OS X 10.3.9 - 10.4.x - 10.5.x)

10 Before you install

a Make sure your machine is connected to the power and your Macintosh is ON. You must be logged on with Administrator rights.

! IMPORTANT

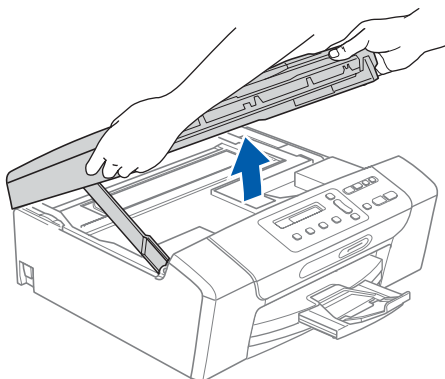
- For the latest drivers and information on the Mac OS X you are using, visit <http://solutions.brother.com/>.
- For Mac OS X 10.3.0 to 10.3.8 users, upgrade to Mac OS X 10.3.9 - 10.5.x.
- Make sure there are no memory cards or a USB Flash memory drive inserted into the machine.


11 Connect the USB cable

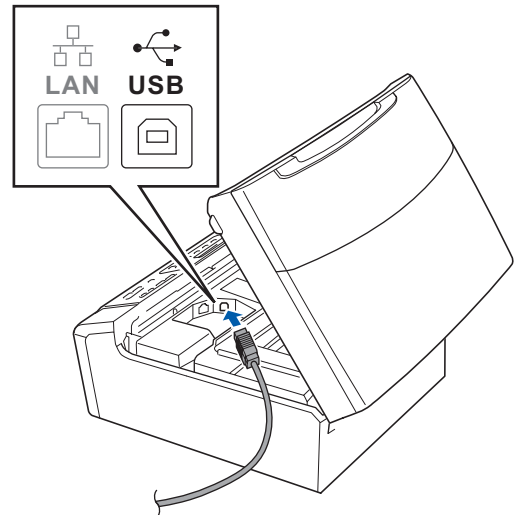
! IMPORTANT

- DO NOT connect the machine to a USB port on a keyboard or a non-powered USB hub.
- Connect the machine directly to your Macintosh.

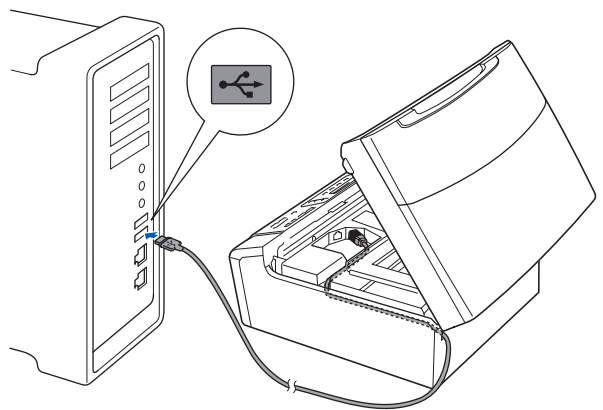
a Using both hands, use the plastic tabs on both sides of the machine to lift the scanner cover until it locks securely into the open position.



b Connect the USB cable to the USB socket marked with a  symbol. You will find the USB socket inside the machine on the right as shown below.



c Carefully guide the USB cable through the trench as shown below, following the trench around and toward the back of the machine. Then connect the cable to your Macintosh.

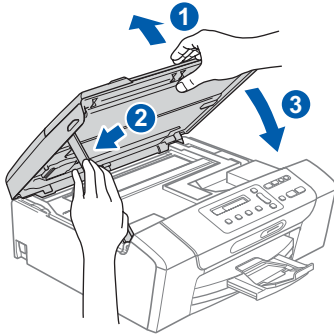


! IMPORTANT

Make sure that the cable does not restrict the cover from closing, or an error may occur.

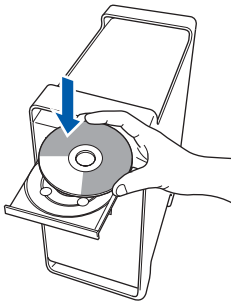


- d Lift the scanner cover to release the lock ①. Gently push the scanner cover support down ② and close the scanner cover ③.

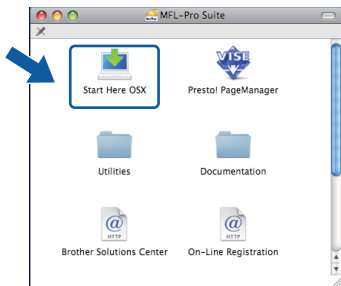


12 Install MFL-Pro Suite

- a Put the supplied CD-ROM into your CD-ROM drive.

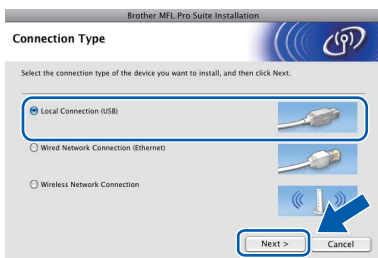


- b Double-click the **Start Here OSX** icon to install.



- c Choose **Local Connection**, and then click **Next**. Follow the on-screen instructions.

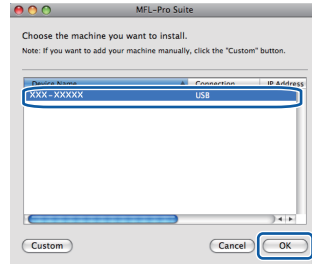
(This screen will not appear for DCP-365CN.)



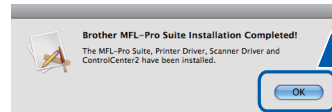
- d Please wait, it will take a few seconds for the software to install. After the installation, click **Restart** to finish installing the software.

- e The Brother software will search for the Brother device.

- f Choose the machine from the list, and then click **OK**.



- g When this screen appears, click **OK**.

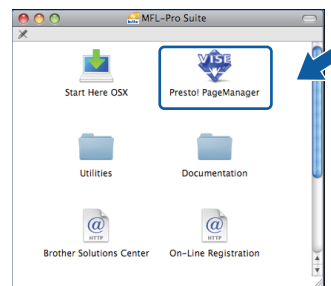


- OK! The installation of MFL-Pro Suite is now complete. Go to step 13 on page 13.

13 Install Presto! PageManager

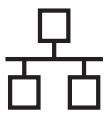
When Presto! PageManager is installed OCR capability is added to Brother ControlCenter2. You can easily scan, share and organize photos and documents using Presto! PageManager.

- a Double-click the **Presto! PageManager** icon and follow the on-screen instructions.



Finish

The installation is now complete.



For wired network interface users
(Windows® 2000 Professional/XP/XP Professional x64 Edition/
Windows Vista®)

10 Before you install

- a** Make sure that your computer is ON and you are logged on with Administrator rights.

! IMPORTANT

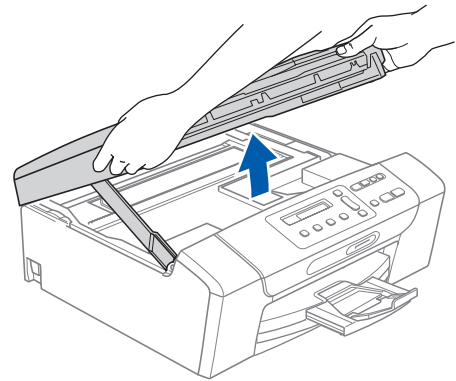
- If there are any programs running, close them.
- Make sure there are no memory cards or a USB Flash memory drive inserted into the machine.
- The screens may differ depending on your operating system.
- The supplied CD-ROM includes ScanSoft™ PaperPort™ 11SE. This software supports Windows® 2000 (SP4 or greater), XP (SP2 or greater), XP Professional x64 Edition and Windows Vista®. Update to the latest Windows® Service Pack before installing MFL-Pro Suite.


! IMPORTANT

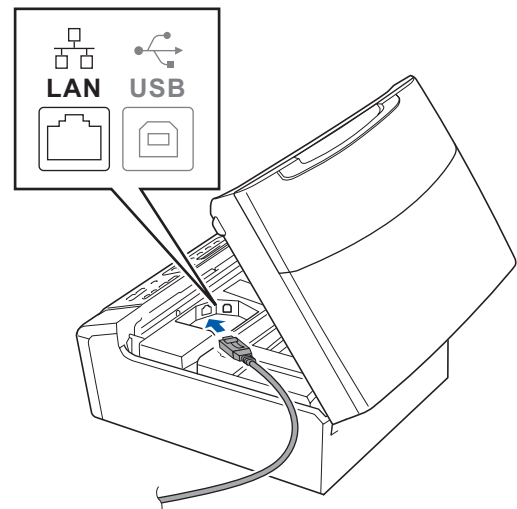
Disable all personal firewall software (other than Windows® Firewall), anti-spyware or antivirus applications for the duration of the installation.

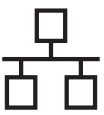
11 Connect the network cable

- a** Using both hands, use the plastic tabs on both sides of the machine to lift the scanner cover until it locks securely into the open position.

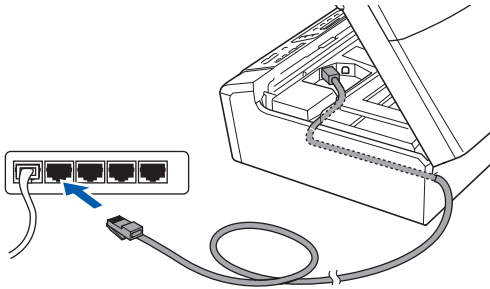


- b** Connect the network cable to the LAN socket marked with a  symbol. You will find the LAN socket inside the machine on the left as shown below.





- c** Carefully guide the network cable through the trench as shown below, following the trench around and toward the back of the machine. Then, connect the cable to your network.



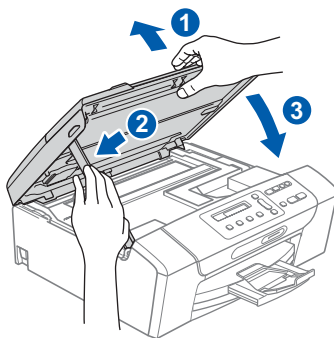
Note

If both USB and LAN cables are being used, guide both cables through the trench with one on top of the other.

IMPORTANT

Make sure that the cable does not restrict the cover from closing, or an error may occur.

- d** Lift the scanner cover to release the lock ①. Gently push the scanner cover support down ② and close the scanner cover ③.



IMPORTANT

If you have previously set up your machine for a wireless network and then want to set it up on a wired network, you should check that the machine's Network I/F is set to Wired LAN. The wireless network interface will become inactive with this setting.

On your machine, press Menu.

Press ▲ or ▼ to choose 3.Network and press OK.

Press ▲ or ▼ to choose 3.Network I/F and press OK.

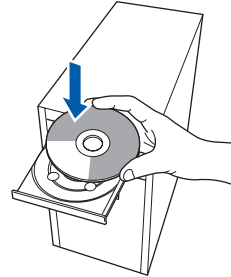
Press ▲ or ▼ to choose Wired LAN and press OK.

Press Stop/Exit.

(DCP-373CW/375CW/377CW only)

12 Install MFL-Pro Suite

- a** Put the supplied CD-ROM into your CD-ROM drive. If the model name screen appears, choose your machine. If the language screen appears, choose your language.

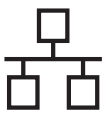


Note

If the Brother screen does not appear automatically, go to **My Computer (Computer)**, double-click the CD-ROM icon, and then double-click **start.exe**.

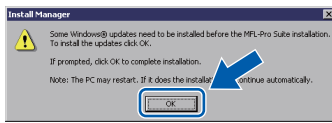
- b** The CD-ROM Top Menu will appear. Click **Install MFL-Pro Suite**.



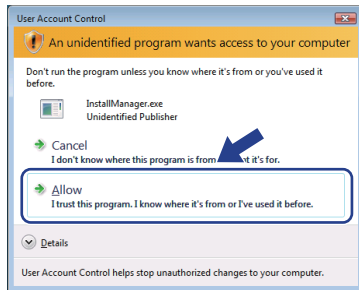


Note

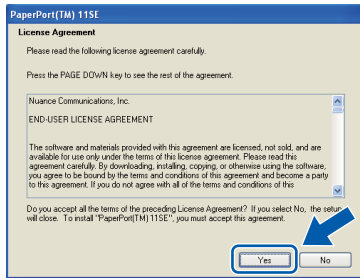
- If this screen appears, click **OK** and restart your computer.



- If the installation does not continue automatically, open the top menu again by ejecting and then reinserting the CD-ROM or double-click the **start.exe** program from the root folder, and continue from **b** to install MFL-Pro Suite.
- For Windows Vista®, when the **User Account Control** screen appears, click **Allow**.

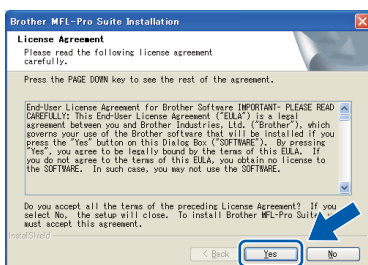


- c** When the ScanSoft™ PaperPort™ 11SE License Agreement window appears, click **Yes** if you agree to the Software License Agreement.



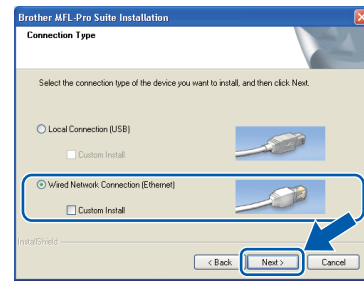
- d** The installation of ScanSoft™ PaperPort™ 11SE will automatically start and is followed by the installation of MFL-Pro Suite.

- e** When the Brother MFL-Pro Suite Software License Agreement window appears, click **Yes** if you agree to the Software License Agreement.

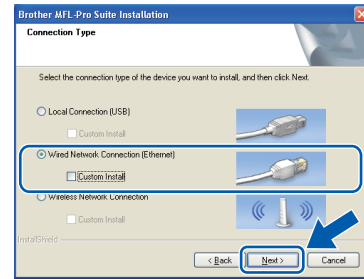


f

Choose **Wired Network Connection**, and then click **Next**.



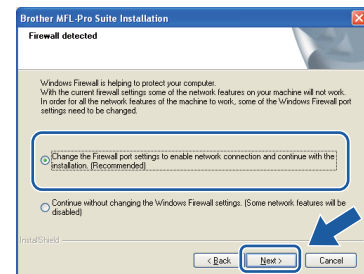
(DCP-365CN)



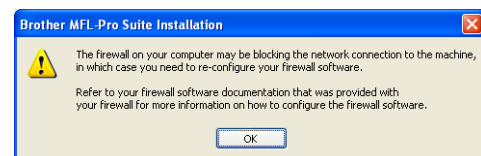
(DCP-373CW/375CW/377CW)

g

For Windows® XP SP2 or greater/XP Professional x64 Edition/Windows Vista® users, when this screen appears, choose **Change the Firewall port settings to enable network connection and continue with the installation. (Recommended)** and click **Next**.

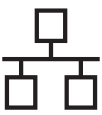


If you are using a firewall other than Windows® Firewall or Windows® Firewall is off, this screen may appear.



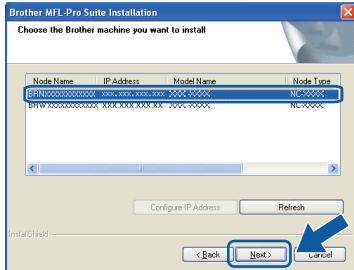
See the instructions provided with your firewall software for information on how to add the following network ports.

- For network scanning, add UDP port 54925.
- If you still have trouble with your network connection, add UDP port 137.



Note

- If there is more than one machine connected to the network, choose your machine from the list, and then click **Next**.
This window will not appear if there is only one machine connected to the network, it will be chosen automatically.



- If your machine is not found over the network, the following screen will appear.



Confirm your settings by following the on-screen instructions.

- If the IP address of the machine is not yet configured for use on your network, the following screen appears.



Click **OK** and then click **Configure IP Address**. Enter an IP address for your machine that is suitable for your network by following the on-screen instructions.

- The installation of the Brother drivers will automatically start. The installation screens appear one after another.

IMPORTANT

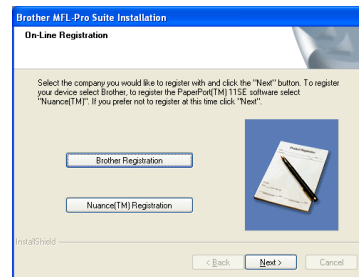
DO NOT cancel any of the screens during the installation. It may take a few seconds for all screens to appear.

Note

For Windows Vista®, when this screen appears, click the check box and click **Install** to complete the installation correctly.



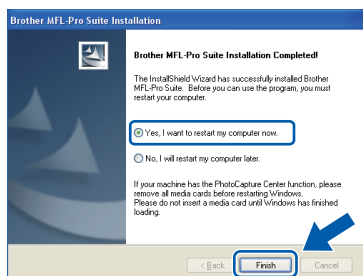
- When the **On-Line Registration** screen is displayed, make your selection and follow the on-screen instructions.





13 Finish and restart

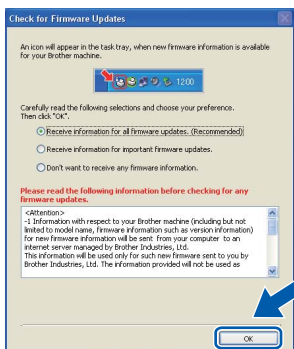
- a Click **Finish** to restart your computer. After restarting the computer, you must be logged on with Administrator rights.



Note

If an error message appears during the software installation, run the **Installation Diagnostics** located in **Start/All Programs/Brother/DCP-XXXX** (where DCP-XXXX is your model name).

- b Choose the firmware update setting and click **OK**.



Note

Internet access is required for the firmware update.

14 Install MFL-Pro Suite on additional computers (if needed)

If you want to use your machine with multiple computers on the network, install MFL-Pro Suite on each computer. Go to step **12** on page 15. Also see step **10-a** on page 14 before you install.

Note

Network license (Windows®)

This product includes a PC license for up to 2 Users.

This license supports the installation of the MFL-Pro Suite including ScanSoft™ PaperPort™ 11SE on up to 2 PCs on the network.

If you want to use more than 2 PCs with ScanSoft™ PaperPort™ 11SE installed, please purchase the Brother NL-5 pack which is a multiple PC license agreement pack for up to 5 additional users. To purchase the NL-5 pack, contact your authorized Brother dealer or contact Brother customer service.

Finish The installation is now complete.

Now go to

Proceed to Install Optional Applications on page 33.

Note

XML Paper Specification Printer Driver

The XML Paper Specification Printer Driver is the most suitable driver when printing from applications that use the XML Paper Specification documents. Please download the latest driver by accessing the Brother Solutions Center at <http://solutions.brother.com/>.



For wired network interface users (Mac OS X 10.3.9 - 10.4.x - 10.5.x)

10 Before you install

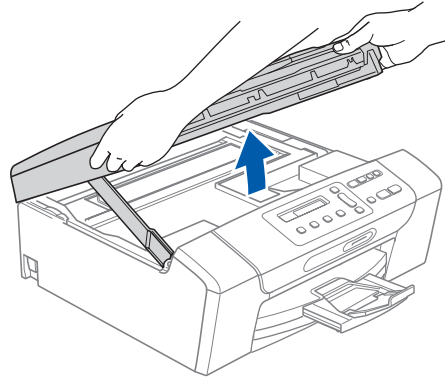
- a** Make sure your machine is connected to the power and your Macintosh is ON. You must be logged on with Administrator rights.


! IMPORTANT

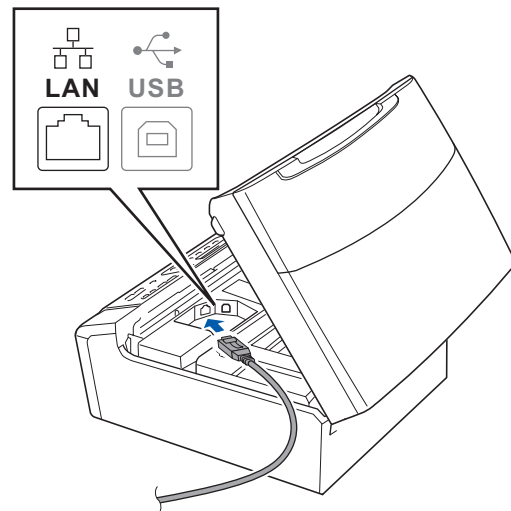
- For the latest drivers and information on the Mac OS X you are using, visit <http://solutions.brother.com/>.
- For Mac OS X 10.3.0 to 10.3.8 users, upgrade to Mac OS X 10.3.9 - 10.5.x.
- Make sure there are no memory cards or a USB Flash memory drive inserted into the machine.
- If you have previously set up your machine for a wireless network and then want to set it up on a wired network, you should check that the machine's Network I/F is set to Wired LAN. The wireless network interface will become inactive with this setting. On your machine, press Menu. Press ▲ or ▼ to choose 3.Network and press OK. Press ▲ or ▼ to choose 3.Network I/F and press OK. Press ▲ or ▼ to choose Wired LAN and press OK. Press Stop/Exit. (DCP-373CW/375CW/377CW only)

11 Connect the network cable

- a** Using both hands, use the plastic tabs on both sides of the machine to lift the scanner cover until it locks securely into the open position.

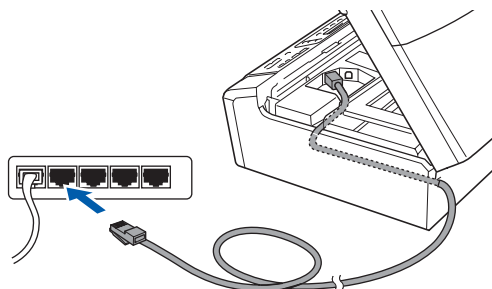


- b** Connect the network cable to the LAN socket marked with a  symbol. You will find the LAN socket inside the machine on the left as shown below.





- c** Carefully guide the network cable through the trench as shown below, following the trench around and toward the back of the machine. Then, connect the cable to your network.



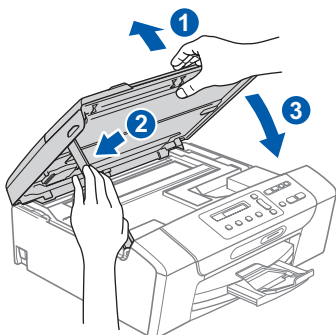
! IMPORTANT

Make sure that the cable does not restrict the cover from closing, or an error may occur.

Note

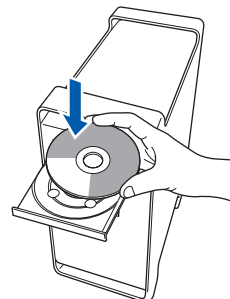
If both USB and LAN cables are being used, guide both cables through the trench with one on top of the other.

- d** Lift the scanner cover to release the lock ①. Gently push the scanner cover support down ② and close the scanner cover ③.

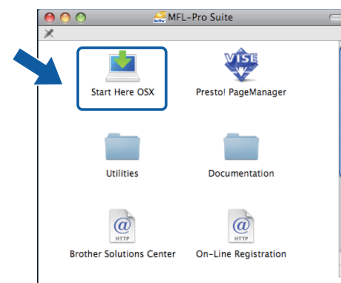


12 Install MFL-Pro Suite

- a** Put the supplied CD-ROM into your CD-ROM drive.

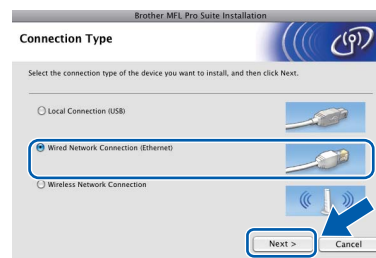


- b** Double-click the **Start Here OSX** icon to install.



- c** Choose **Wired Network Connection**, and then click **Next**. Follow the on-screen instructions.

(This screen will not appear for DCP-365CN.)

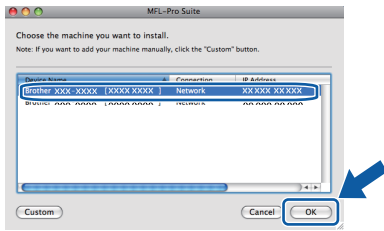


- d** Please wait, it will take a few seconds for the software to install. After the installation, click **Restart** to finish installing the software.

- e** The Brother software will search for the Brother device.

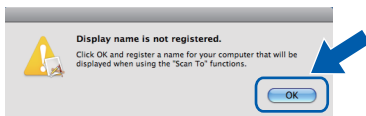


- f** If the machine is configured for your network, choose the machine from the list, and then click **OK**.

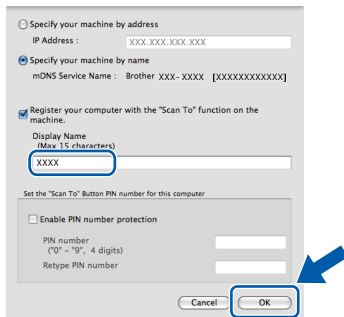


Note

- If your machine is not found over the network, confirm your network settings.
- If this screen appears click **OK**.

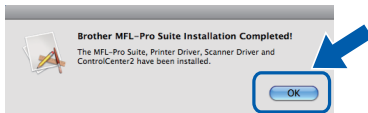


Enter a name for your Macintosh in **Display Name** up to 15 characters long and click **OK**. Go to **g**.



The name you enter will appear on the machine's LCD when you press the **Scan** key and choose a scan option. (For more information, see Network Scanning in the Software User's Guide on the CD-ROM.)

- g** When this screen appears, click **OK**.

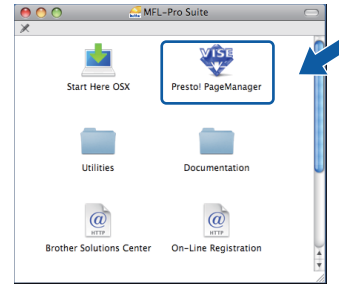


- OK!** The installation of MFL-Pro Suite is now complete. Go to step **13** on page 21.

13 Install Presto! PageManager

When Presto! PageManager is installed OCR capability is added to Brother ControlCenter2. You can easily scan, share and organize photos and documents using Presto! PageManager.

- a** Double-click the **Presto! PageManager** icon and follow the on-screen instructions.



14 Install MFL-Pro Suite on additional computers (if needed)

If you want to use your machine with multiple computers on the network, install MFL-Pro Suite on each computer. Go to step **12** on page 20. Also see step **10-a** on page 19 before you install.

Finish

The installation is now complete.



For wireless network interface users (DCP-373CW/375CW/377CW only)

10 Before you begin

First you **must** configure the wireless network settings of your machine to communicate with your network access point/router. After the machine is configured to communicate with your access point/router, computers on your network will have access to the machine. To use the machine from these computers, you will need to install the drivers and software. The following steps will guide you through the configuration and installation process.

To achieve optimum results with normal everyday document printing, place the Brother machine as close to the network access point/router as possible with minimal obstructions. Large objects and walls between the two devices as well as interference from other electronic devices can affect the data transfer speed of your documents.

Due to these factors, wireless may not be the best method of connection for all types of documents and applications. If you are printing large files, such as multi-page documents with mixed text and large graphics, you may want to consider choosing wired Ethernet for a faster data transfer or USB for the fastest throughput speed.

Although the Brother DCP-373CW/375CW/377CW can be used in both a wired and wireless network, only one of the connection methods can be used at a time.

! IMPORTANT

If you have previously configured the wireless settings of the machine you must reset the network (LAN) settings before you can configure the wireless settings again.

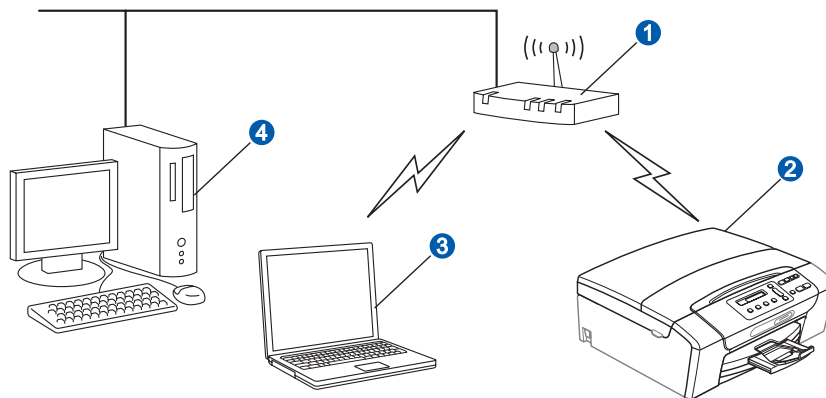
On your machine, press Menu. Press ▲ or ▼ to choose 3.Network and press OK.

Press ▲ or ▼ to choose 0.Network Reset, and then press OK.

Press ▲ twice to choose Reset and Yes.

The following instructions are for infrastructure mode (connected to a computer through an access point/router).

Infrastructure Mode



- 1 Access point/router
- 2 Wireless Network machine (your machine)
- 3 Wireless capable computer connected to the access point/router
- 4 Wired computer connected to the access point/router

Please make sure the wireless network settings of the machine match the access point/router.

Note

To set up your machine in Ad-hoc mode (connected to a wireless capable computer without an access point/router) you can find instructions in the Network User's Guide on the CD-ROM.

You can view the Network User's Guide by following the instructions below.

1 Turn on your computer. Insert the Brother CD-ROM into your CD-ROM drive.

For Windows®:

2 Choose your model and the language. The CD-ROM top menu will appear.

3 Click **Documentation**, and then click **HTML documents**.

For Macintosh:

2 Double-click **Documentation**, and then double-click your language folder.

3 Double-click **top.html**.



11

Confirm your network environment (Infrastructure Mode)

The following instructions will offer two methods for installing your Brother machine in a wireless network environment. Both methods are for infrastructure mode, using a wireless access point/router that uses DHCP to assign IP addresses. Choose a configuration method and proceed to the page indicated.

- a** If your wireless access point/router does not support SecureEasySetup™, Wi-Fi Protected Setup or AOSS™, **write down the wireless network settings** of your wireless access point/router in the area below.

! IMPORTANT

If you do not know this information (Network Name (SSID/ESSID), and Password), you cannot continue the wireless setup. You should see the documentation provided with your wireless access point/router, consult the router manufacturer, or your system administrator.

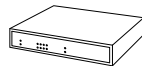
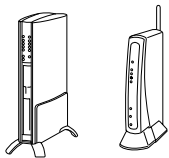
Item	Record the current wireless network settings
Network Name: (SSID/ESSID)	
Password	

Your Brother machine supports the use of the first WEP KEY only. If you are using a router that is using more than one WEP KEY enter the KEY used for the first WEP KEY.

Now go to

page 24

- b** If your wireless access point/router supports automatic wireless (one-push) setup (SecureEasySetup™, Wi-Fi Protected Setup or AOSS™)



Now go to

page 25



Connecting the Brother machine to the wireless network

12 Configure the wireless settings (typical Wireless Setup in infrastructure mode)

- a** On your machine, press **Menu**. Press **▲** or **▼** to choose **3.Network** and press **OK**. Press **▲** or **▼** to choose **2.WLAN** and press **OK**. Press **▲** or **▼** to choose **2.Setup Wizard** and press **OK**.

When **Change to WLAN?** is displayed, press **▲** to accept.

This will start the wireless setup wizard. To cancel, press **Stop/Exit**.

- b** The machine will search for available SSIDs. If a list of SSIDs is displayed, use the **▲** or **▼** keys to choose the SSID you wrote down in step **11-a** on page 23, then press **OK**. If you are using an authentication and encryption method that requires a password, go to **c**.

If your authentication method is Open System and your encryption mode is None, go to **d**.

Note

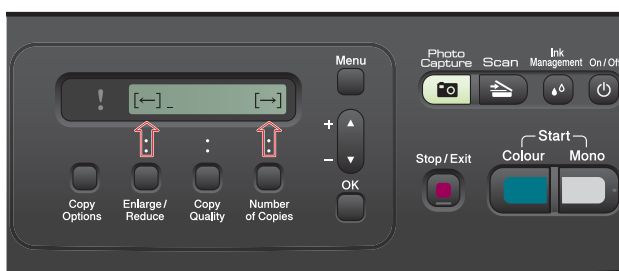
It will take several seconds to display a list of available SSIDs.

*If a list of SSIDs is not displayed, make sure your access point is on. Move your machine closer to the access point and try starting from **a** again.*

If your access point is set to not broadcast the SSID you will have to manually add the SSID name. For details, see the *Network User's Guide* on the CD-ROM.

- c** Enter the Password you wrote down in step **11-a** on page 23 using the **▲**, **▼** keys to choose each letter or number.

Use **Enlarge/Reduce** key or **Number of Copies** key to move the cursor left or right.



For example, to enter the letter **a**, press the **▲** key once. To enter the number **3**, hold down the **▲** key until it appears.

The letters appear in this order: lower case, upper case, numbers and then special letters. (For more information, see *Entering Text for Wireless Settings* (DCP-373CW/375CW/377CW only) on page 37.)

Press **OK** when you have entered all the characters, then press **▲ Yes** to apply your settings. Go to **d**.

- d** Your machine will now try to connect to your wireless network using the information you have entered. If successful, **Connected** will appear for 60 seconds on the LCD.

It may take a few minutes to connect to your wireless network.

Note

*If the LCD displays **Wrong Password**, the password you entered did not match with your access point. Verify your network settings collected in step **11-a** on page 23, then repeat **a** to **c** to make sure you have entered the correct information.*

*If the LCD displays **Connection Fail**, make sure your access point is on, and verify your network settings collected in step **11-a** on page 23. Temporarily move your machine as close as possible to the access point, then repeat **a** to **c** to make sure you have entered the correct information.*

If your access point does not have DHCP enabled you will need to manually configure the IP address, subnet mask and gateway of the machine to suit your network. See Chapter 6 of the Network User's Guide for details.

- e** Press **OK**.

OK! Wireless setup is now complete.

To install MFL-Pro Suite, continue to step **13**.

For Windows® Users:

Now go to

Page 27

For Macintosh Users:

Now go to

Page 31



12 Configure the wireless settings using the automatic wireless (one-push) method

- a** Confirm your wireless access point/router has the SecureEasySetup™, Wi-Fi Protected Setup or AOSS™ symbol as shown below.



- b** Place the Brother machine within range of your SecureEasySetup™, Wi-Fi Protected Setup or AOSS™ access point/router. The range may differ depending on your environment. Refer to the instructions provided with your access point/router.

- c** Push the SecureEasySetup™, Wi-Fi Protected Setup or AOSS™ button on your wireless access point/router. See the user's guide for your wireless access point/router for instructions.

- d** On your machine, press **Menu**. Press **▲** or **▼** to choose 3 . Network and press **OK**. Press **▲** or **▼** to choose 2 . WLAN and press **OK**. Press **▲** or **▼** to choose 3 . SES/WPS/AOSS and press **OK**.

When *Change to WLAN?* is displayed, press **▲** to accept. This will start the wireless setup wizard.

This feature will automatically detect which mode (SecureEasySetup™, Wi-Fi Protected Setup or AOSS™) your access point/router uses to configure your machine.

Note

If your wireless access point/router supports Wi-Fi Protected Setup (PIN Method) and you want to configure your machine using the PIN (Personal Identification Number) Method, see Using the PIN Method of Wi-Fi Protected Setup in the Network User's Guide on the CD-ROM.

- e** If the LCD shows *Connected*, the machine has successfully connected to your wireless access point/router. You can now use your machine in a wireless network.

If the LCD shows *Setting WLAN*, then *Connection Error*, a session overlap was detected. The machine has detected 2 or more wireless access points/routers on your network that have the SecureEasySetup™, Wi-Fi Protected Setup mode or AOSS™ mode enabled. Make sure that only one wireless access point/router has one of these modes enabled and try starting from **c** again.

If the LCD shows *Setting WLAN*, then *No Access Point*, the machine has not detected the access point/router on your network with the SecureEasySetup™, Wi-Fi Protected Setup or AOSS™ mode enabled. Move your machine close to the access point/router and try starting from **c** again.

If the LCD shows *Setting WLAN*, then *Connection Fail*, the machine has not successfully connected to your wireless access point/router. Try starting from **c** again. If the same message is indicated again, reset the machine back to the default factory settings and try again. For resetting, see *Restore the network settings to factory default* on page 37.

LCD messages when using the SES/WPS/AOSS control panel menu

<i>Setting WLAN</i>	<i>Searching for or accessing the access point, and downloading settings from the access point.</i>
<i>Connecting SES/WPS/AOSS</i>	<i>Connecting to the access point.</i>
<i>Connected</i>	<i>The machine has successfully connected.</i>
<i>Connection Error</i>	<i>A session overlap was detected.</i>
<i>No Access Point</i>	<i>The access point detection failed.</i>
<i>Connection Fail</i>	<i>Connection failed. The machine was not able to connect with the access point. Try the configuration from c on page 25 again.</i>

Note

You can also manually configure the wireless settings following the steps starting at step **11-a** on page 23.

- f** Press **OK**.



Wireless setup is now complete.

To install MFL-Pro Suite, continue to step **13**.

For Windows® Users:

Now go to

Page 27

For Macintosh Users:

Now go to

Page 31



Install the drivers & software

(Windows® 2000 Professional/XP/XP Professional x64 Edition/
Windows Vista®)

13 Before you install MFL-Pro Suite

a Make sure that your computer is ON and you are logged on with Administrator rights.

! IMPORTANT

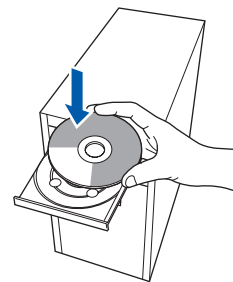
- If there are any programs running, close them.
- Make sure there are no memory cards or a USB Flash memory drive inserted into the machine.
- The screens may differ depending on your operating system.
- The supplied CD-ROM includes ScanSoft™ PaperPort™ 11SE. This software supports Windows® 2000 (SP4 or greater), XP (SP2 or greater), XP Professional x64 Edition and Windows Vista®. Update to the latest Windows® Service Pack before installing MFL-Pro Suite.

! IMPORTANT

Disable all personal firewall software (other than Windows® Firewall), anti-spyware or antivirus applications for the duration of the installation.

14 Install MFL-Pro Suite

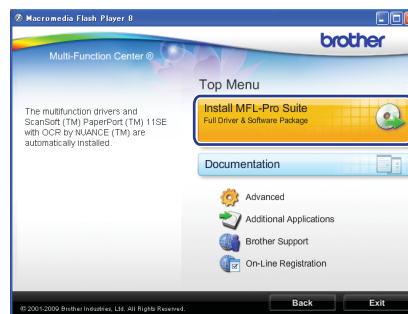
a Put the supplied CD-ROM into your CD-ROM drive. If the model name screen appears, choose your machine. If the language screen appears, choose your language.



Note

If the Brother screen does not appear automatically, go to **My Computer (Computer)**, double-click the CD-ROM icon, and then double-click **start.exe**.

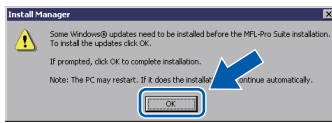
b The CD-ROM Top Menu will appear. Click **Install MFL-Pro Suite**.



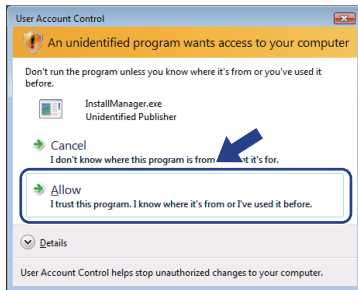


Note

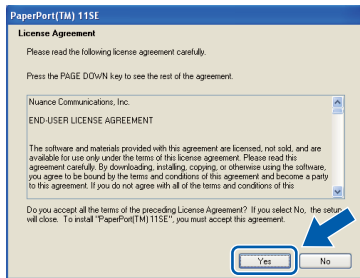
- If this screen appears, click **OK** and restart your computer.



- If the installation does not continue automatically, open the top menu again by ejecting and then reinserting the CD-ROM or double-click the **start.exe** program from the root folder, and continue from **b** to install MFL-Pro Suite.
- For Windows Vista®, when the **User Account Control** screen appears, click **Allow**.

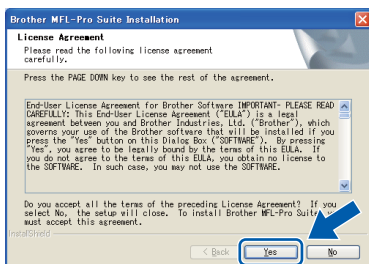


- When the ScanSoft™ PaperPort™ 11SE License Agreement window appears, click **Yes** if you agree to the Software License Agreement.



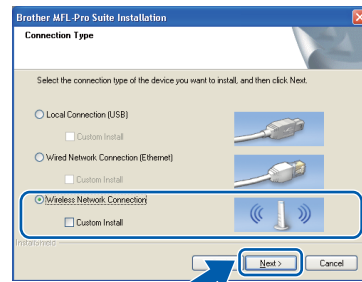
- The installation of ScanSoft™ PaperPort™ 11SE will automatically start and is followed by the installation of MFL-Pro Suite.

- When the Brother MFL-Pro Suite Software License Agreement window appears, click **Yes** if you agree to the Software License Agreement.



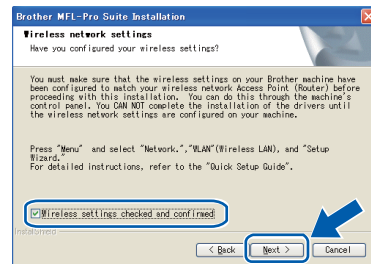
f

Choose **Wireless Network Connection**, and then click **Next**.



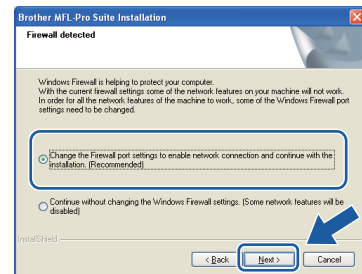
g

Click on **Wireless settings checked and confirmed** check box, and then click **Next**.

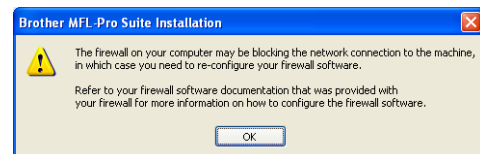


h

For Windows® XP SP2 or greater/XP Professional x64 Edition/Windows Vista® users, when this screen appears, choose **Change the Firewall port settings to enable network connection and continue with the installation. (Recommended)** and click **Next**.



If you are using a firewall other than Windows® Firewall or Windows® Firewall is off, this screen may appear.



See the instructions provided with your firewall software for information on how to add the following network ports.

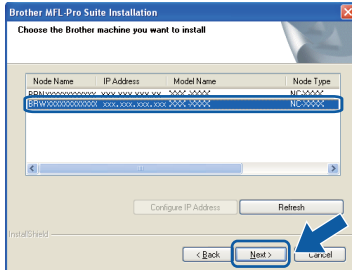
- For network scanning, add UDP port 54925.
- If you still have trouble with your network connection, add UDP port 137.



Note

- If there is more than one machine connected to the network, choose your machine from the list, and then click **Next**.

This window will not appear if there is only one machine connected on the network, it will be chosen automatically.



- If your wireless settings fail, an error message will appear during the installation of MFL-Pro Suite and the installation will be terminated. Confirm your settings by following the on-screen instructions. If you encounter this failure, go to step **11-a** on page 23 and setup the wireless connection again.



- If you are using WEP and the LCD displayed *Connected* but your machine is not found, make sure you entered the WEP key correctly. The WEP key is case sensitive.
- If the IP address of the machine is not yet configured for use on your network, the following screen appears.



Click **OK** and then click **Configure IP Address**. Enter an IP address for your machine that is suitable for your network by following the on-screen instructions.

i

The installation of the Brother drivers will automatically start. The installation screens appear one after another.

! IMPORTANT

DO NOT cancel any of the screens during the installation. It may take a few seconds for all screens to appear.

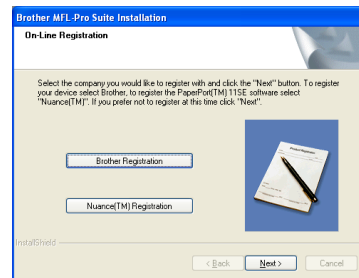
Note

For Windows Vista®, when this screen appears, click the check box and click **Install** to complete the installation correctly.



j

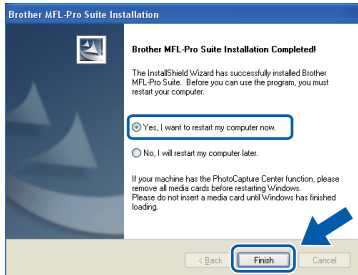
When the **On-Line Registration** screen is displayed, make your selection and follow the on-screen instructions.





15 Finish and restart

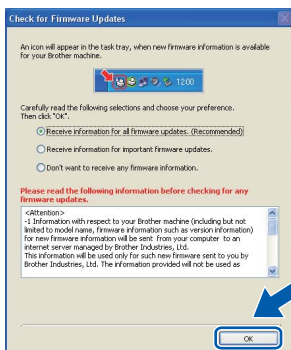
- a** Click **Finish** to restart your computer. After restarting the computer, you must be logged on with Administrator rights.



Note

If an error message appears during the software installation, run the **Installation Diagnostics** located in **Start/All Programs/Brother/DCP-XXXX** (where DCP-XXXX is your model name).

- b** Choose the firmware update setting and click **OK**.



Note

Internet access is required for the firmware update.

16 Install MFL-Pro Suite on additional computers (if needed)

If you want to use your machine with multiple computers on the network, install MFL-Pro Suite on each computer. Go to step **13** on page 27.

Note

Network license (Windows®)

This product includes a PC license for up to 2 Users.

This license supports the installation of the MFL-Pro Suite including ScanSoft™ PaperPort™ 11SE on up to 2 PCs on the network.

If you want to use more than 2 PCs with ScanSoft™ PaperPort™ 11SE installed, please purchase the Brother NL-5 pack which is a multiple PC license agreement pack for up to 5 additional users. To purchase the NL-5 pack, contact your authorized Brother dealer or contact Brother customer service.

Finish The installation is now complete.

Now go to

Proceed to Install Optional Applications on page 33.

Note

XML Paper Specification Printer Driver

The XML Paper Specification Printer Driver is the most suitable driver when printing from applications that use the XML Paper Specification documents. Please download the latest driver by accessing the Brother Solutions Center at <http://solutions.brother.com/>.



Install the drivers & software (Mac OS X 10.3.9 - 10.4.x - 10.5.x)

13 Before you install MFL-Pro Suite

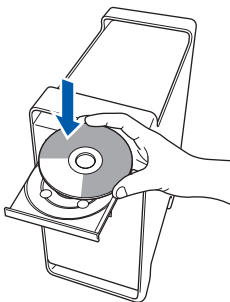
- a Make sure your machine is connected to the power and your Macintosh is ON. You must be logged on with Administrator rights.

! IMPORTANT

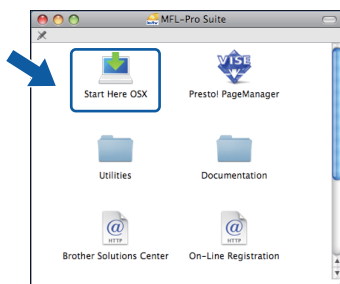
- For the latest drivers and information on the Mac OS X you are using, visit <http://solutions.brother.com/>.
- For Mac OS X 10.3.0 to 10.3.8 users, upgrade to Mac OS X 10.3.9 - 10.5.x.
- Make sure there are no memory cards or a USB Flash memory drive inserted into the machine.

14 Install MFL-Pro Suite

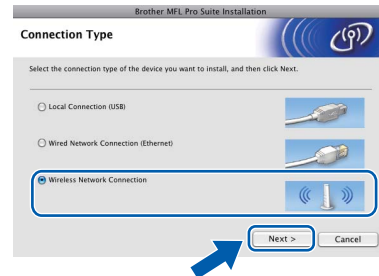
- a Put the supplied CD-ROM into your CD-ROM drive.



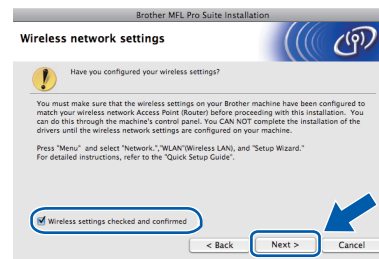
- b Double-click the **Start Here OSX** icon to install.



- c Choose **Wireless Network Connection**, and then click **Next**.



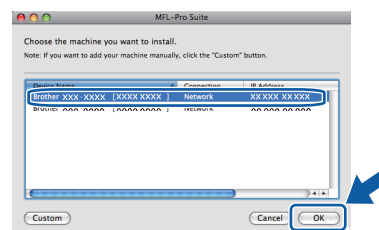
- d Click on the **Wireless settings checked and confirmed** check box, and then click **Next**. Follow the on-screen instructions.



- e Please wait, it will take a few seconds for the software to install. After the installation, click **Restart** to finish installing the software.

- f The Brother software will search for the Brother device.

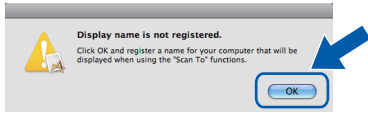
- g If the machine is configured for your network, choose the machine from the list, and then click **OK**.



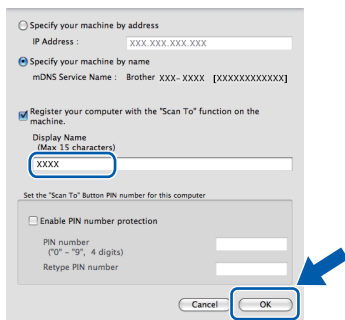


Note

- If your wireless settings fail, the installation of the MFL-Pro software will be terminated. Confirm your network settings. If you encounter this failure, go to step **11-a** on page 23 and setup the wireless connection again.
- If this screen appears click **OK**.

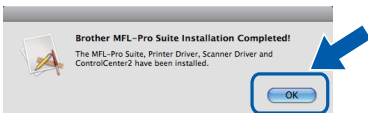


Enter a name for your Macintosh in **Display Name** up to 15 characters long and click **OK**. Go to **h**.



The name you enter will appear on the machine's LCD when you press the **Scan** key and choose a scan option. (For more information, see *Network Scanning in the Software User's Guide on the CD-ROM.*)

h When this screen appears, click **OK**.

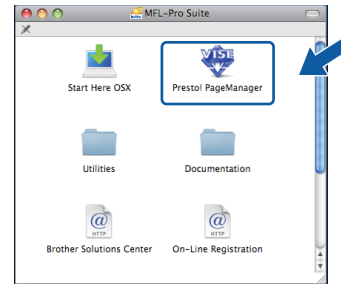


OK! The installation of MFL-Pro Suite is now complete. Go to step **15** on page 32.

15 Install Presto! PageManager

When Presto! PageManager is installed OCR capability is added to Brother ControlCenter2. You can easily scan, share and organize photos and documents using Presto! PageManager.

a Double-click the **Presto! PageManager** icon and follow the on-screen instructions.



16 Install MFL-Pro Suite on additional computers (if needed)

If you want to use your machine with multiple computers on the network, install MFL-Pro Suite on each computer. Go to step **13** on page 31.

Finish The installation is now complete.

1 Install FaceFilter Studio supported by Reallusion, Inc

FaceFilter Studio is an easy-to-use borderless photo printing application. FaceFilter Studio also lets you edit your photo data and add photo effects such as red eye reduction or skin tone enhancement.

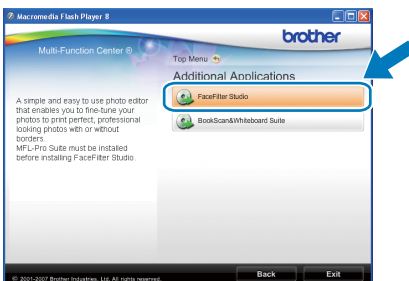
! IMPORTANT

- The machine must be ON and connected to the computer.
- The computer must be connected to the Internet.
- Make sure you are logged on with Administrator rights.
- This application is not available for Windows Server® 2003/2008.

- Open the top menu again by ejecting and then reinserting the CD-ROM or by double-clicking the **start.exe** program from the root folder.
- The CD-ROM Top Menu will appear. Choose your language and then click **Additional Applications**.



- Click the **FaceFilter Studio** button to install.



2 Install FaceFilter Studio Help

To get instructions on how to use FaceFilter Studio, download and install FaceFilter Studio Help.

- To run FaceFilter Studio, go to **Start/All Programs/Reallusion/FaceFilter Studio** on your computer.
- Click the **?** button on the upper right corner of the screen.
- Click **Check for updates** to go to the Reallusion update web page.



- Click the **Download** button and choose a folder to save the file in.
- Close FaceFilter Studio before you start the installer for FaceFilter Studio Help. Double-click the downloaded file from the folder you specified and follow the on-screen instructions for installation.

Note

To view the complete FaceFilter Studio Help, choose **Start/All Programs/Reallusion/FaceFilter Studio/FaceFilter Studio Help** on your computer.

3 Install BookScan&Whiteboard Suite supported by Reallusion, Inc

You can install **BookScan&Whiteboard Suite**. The **BookScan Enhancer** software can correct your scanned book images automatically. The **Whiteboard Enhancer** software cleans up and enhances text and images from photos taken of your whiteboard. (Internet access required.)

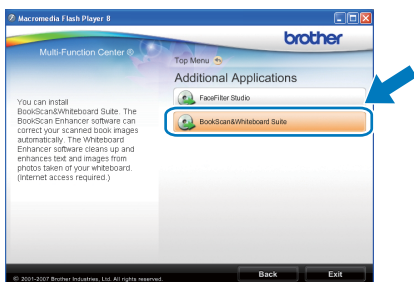
! IMPORTANT

- The machine must be ON and connected to the computer.
- The computer must be connected to the Internet.
- Make sure you are logged on with Administrator rights.
- This application is not available for Windows Server® 2003/2008.

- Open the top menu again by ejecting and then reinserting the CD-ROM or by double-clicking the **start.exe** program from the root folder.
- The CD-ROM Top Menu will appear. Choose your language and then click **Additional Applications**.



- Click the **BookScan&Whiteboard Suite** button to install.



BRAdmin Light utility (for Windows® users)

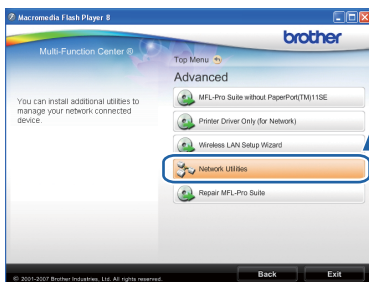
BRAdmin Light is a utility for initial setup of Brother network connected devices. It also can search for Brother products on your network, view the status and configure basic network settings, such as IP address. For more information on BRAdmin Light, visit us at <http://solutions.brother.com/>.

Note

If you require more advanced printer management, use the latest Brother BRAdmin Professional utility version that is available as a download from <http://solutions.brother.com/>.

Install the BRAdmin Light configuration utility

- a** Click **Advanced** and then **Network Utilities** on the menu screen.



- b** Click **BRAdmin Light** and follow the on-screen instructions.

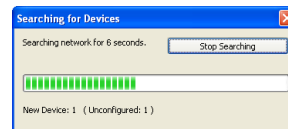


Set your IP address, Subnet Mask and Gateway using BRAdmin Light

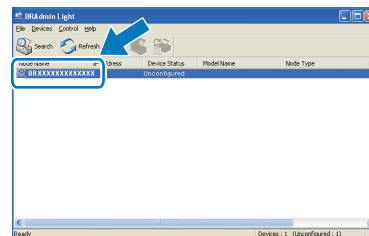
Note

If you have a DHCP/BOOTP/RARP server in your network, you don't have to do the following operation. The machine will automatically obtain its own IP address.

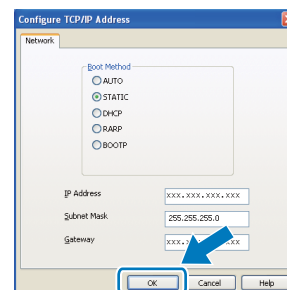
- a** Start BRAdmin Light. It will search for new devices automatically.



- b** Double-click the unconfigured device.



- c** Choose **STATIC** for the **Boot Method**. Enter the **IP Address**, **Subnet Mask** and **Gateway**, and then click **OK**.



- d** The address information will be saved to the machine.

BRAdmin Light utility (for Mac OS X users)

BRAdmin Light is a utility for initial setup of Brother network connected devices. It also can search for Brother products on your network, view the status and configure basic network settings, such as IP address from a computer running Mac OS X 10.3.9 - 10.5.x.

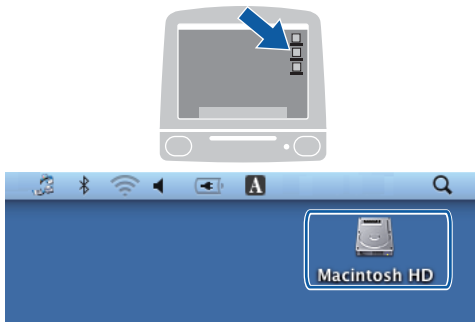
The BRAdmin Light software will be installed automatically when you install the printer driver. If you have already installed the printer driver, you don't have to install BRAdmin Light again. For more information on BRAdmin Light, visit us at <http://solutions.brother.com/>.

Set your IP address, Subnet Mask and Gateway using BRAdmin Light

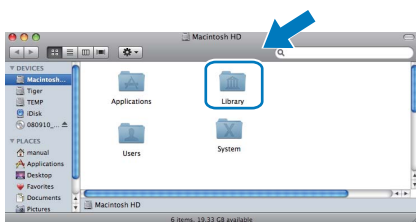
Note

- If you have a DHCP/BOOTP/RARP server in your network, you don't have to do the following operation. The machine will automatically obtain its own IP address.
- Make sure that version 1.4.2 or later of Java™ client software is installed on your computer.

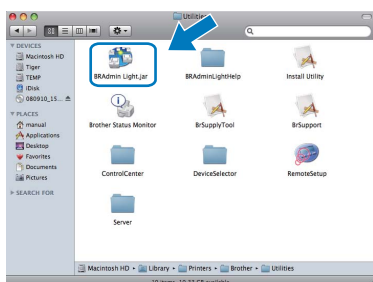
- a** Double-click the **Macintosh HD** icon on your desktop.



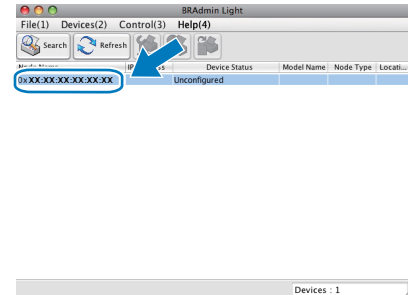
- b** Choose **Library**, **Printers**, **Brother** and then **Utilities**.



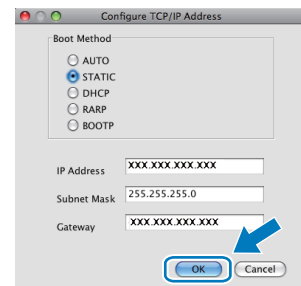
- c** Double-click the file **BRAdmin Light.jar** and run the software. BRAdmin Light will then search for new devices automatically.



- d** Double-click the unconfigured device.



- e** Choose **STATIC** for the **Boot Method**. Enter the **IP Address**, **Subnet Mask** and **Gateway**, and then click **OK**.



- f** The address information will be saved to the machine.

Restore the network settings to factory default

To restore all network settings of the internal Print/Scan server to factory default, please follow the steps below.

- a** Make sure the machine is not operating, then disconnect all the cables from the machine (except the power cord).
- b** Press **Menu**.
- c** Press **▲** or **▼** to choose 3.Network.
Press **OK**.
- d** Press **▲** or **▼** to choose 0.Network Reset.
Press **OK**.
- e** Press **▲** to choose Reset.
- f** Press **▲** to choose Yes.
- g** The machine will restart, re-connect cables once this is complete.

Entering Text for Wireless Settings (DCP-373CW/375CW/377CW only)

Press **▲** or **▼** repeatedly to select a character from the list below:

abcdefghijklmnopqrstuvwxyzABCDEFGHIJKLMNOPQRSTUVWXYZ0123456789

(space)!"#\$%&'()*+,-./:;<=>?@[^_`{|}~

Press **Enlarge/Reduce** key or **Number of Copies** key repeatedly to move the cursor.



Note

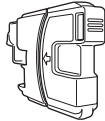



Making corrections

*If you entered an incorrect letter and want to change it, press **Enlarge/Reduce** key or **Number of Copies** key to position the cursor under the incorrect letter. Use the **▲** and **▼** keys to change to the correct letter, then press **Number of Copies** key repeatedly to move the cursor back to the end of the text. If you press the **Stop/Exit** key, all letters above and to the right of the cursor will be deleted.*

Replacement consumables

When the time comes to replace ink cartridges, an error message will be indicated on the LCD. For more information about the ink cartridges for your machine, visit <http://www.brother.com/original/> or contact your local Brother re-seller.

Ink cartridge

Black	Yellow	Cyan	Magenta
LC980BK	LC980Y	LC980C	LC980M
			

What is Innobella™?

Innobella™ is a range of genuine consumables offered by Brother. The name "Innobella™" derives from the words "Innovation" and "Bella" (meaning "Beautiful" in Italian) and is a representation of the "innovative" technology providing you with "beautiful" and "long lasting" print results.



Trademarks

The Brother logo is a registered trademark of Brother Industries, Ltd.

Brother is a registered trademark of Brother Industries, Ltd.

Multi-Function Link is a registered trademark of Brother International Corporation.

Windows Vista is either a registered trademark or a trademark of Microsoft Corporation in the United States and other countries.

Microsoft, Windows, Windows Server and Internet Explorer are registered trademarks of Microsoft Corporation in the United States and/or other countries.

Apple, Macintosh and Safari are trademarks of Apple Inc., registered in the United States and other countries.

Nuance, the Nuance logo, PaperPort and ScanSoft are trademarks or registered trademarks of Nuance Communications, Inc. or its affiliates in the United States and/or other countries.

FaceFilter Studio is a trademark of Reallusion, Inc.

BROADCOM, SecureEasySetup and the SecureEasySetup logo are trademarks or registered trademarks of Broadcom Corporation in the United States and/or other countries.

AOSS is a trademark of Buffalo Inc.

Wi-Fi, WPA, WPA2, Wi-Fi Protected Access and Wi-Fi Protected Setup are either trademarks or registered trademarks of Wi-Fi Alliance in the United States and/or other countries.

Each company whose software title is mentioned in this manual has a Software License Agreement specific to its proprietary programs.

All other trademarks are the property of their respective owners.

Compilation and Publication

Under the supervision of Brother Industries, Ltd., this manual has been compiled and published, covering the latest product descriptions and specifications.

The contents of this manual and the specifications of this product are subject to change without notice.

Brother reserves the right to make changes without notice in the specifications and materials contained herein and shall not be responsible for any damages (including consequential) caused by reliance on the materials presented, including but not limited to typographical and other errors relating to the publication.

Copyright and License

©2009 Brother Industries, Ltd. All rights reserved.

This product includes software developed by the following vendors:

©1983-1998 PACIFIC SOFTWARES, INC.

This product includes the "KASAGO TCP/IP" software developed by ELMIC WESCOM, Inc.

©2008 Devicescape Software, Inc.