

DCP-J4120DW Technical Specifications

The DCP-J4120DW is packed full of features and is one of the most compact All-In-One inkjet printers capable of printing up to A3 size by using its rear manual feed slot.

Printing in A4 at speeds of up to 20ipm (mono) and 18ipm (colour), it allows you to present professional quality documents without the wait, while high yield ink cartridges that can print up to 1,200 pages ensure low costs without sacrificing on quality.

Print 3.0 is all about convenient printing. Connect your smartphone or tablet to the DCP-J4120DW and print from/scan to your mobile device through Brother's iPrint&Scan app. Connect wirelessly over your network to scan and print documents from your desktop PC.

You can also connect directly to the web from your printer to scan to; or print from Dropbox, Google Drive, Box, OneDrive, Picasa™, Flickr®, Evernote™, and OneNote.

All Brother inkjet multifunction printers incorporate an ink system with four individual ink cartridges – meaning you only need to replace the ink that runs out – reducing waste and saving you money. The DCP-J4120DW is also compliant with strict ENERGY STAR, Blue Angel and Nordic Swan environmental standards to ensure low energy consumption, low noise levels and a recycle-friendly design.

GENERAL

Memory capacity	128MB
Connectivity	USB 2.0, Wireless 802.11b/g/n,
Mobile connectivity	iPrint&scan app, Airprint, Google Cloud Print(TM), Wi-Fi Direct
Display	6.8 cm LCD touchscreen display

COLOUR PRINTER

Speed (laser comparable)*	Up to 20ipm mono & 18ipm colour
2-sided print	Automatic up to A4
Resolution	Up to 6,000 x 1,200 (vertical x horizontal)
Borderless printing	Available for A3, A4, LTR, A6, Photo 10x15cm, Photo-L, Photo 2-L, Index Card, Postcard
Minimum droplet size	* 1.5pl (when used with Brother BP71 paper, see supplies section)

COLOUR COPIER

Speed	24 seconds
Resolution	1,200 x 2,400dpi (colour & mono)
Multi copy	Yes (99 copies)
Enlargement / reduction ratio	25% - 400%
Other features	N-in-1, Poster printing

COLOUR SCANNER

Resolution	Optical: Up to 2,400dpi Interpolated: Up to 19,200dpi
Scan speed	From 3.34 seconds mono & colour at 100dpi
Scan format	JPEG, BMP, PDF, TIFF, PNG (USB flash memory drive supports PDF mono & colour, JPEG, TIFF).
Scan to	Email, OCR, Image, File, Card, USB Flash Drive, FTP, Network**

PAPER HANDLING

Paper input	150 sheet standard paper tray 1 sheet manual feed slot up to A3
Paper output	50 sheets
Paper handling sizes	Landscape: A4, LTR, EXE, Portrait: A3, LGR, LGL, A5, A6, Photo, Indexcard, Photo-L, Photo-2L, Com-10, DL Envelope, Monarch
Media types	Plain, Inkjet, Glossy, Transparency

* ISO/IEC 24734

**Optional free download available from <http://support.brother.com>

***Windows® only

****Approx. cartridge yield is declared in accordance with ISO/IEC 24711

DIRECT PRINT AND SCANNING

USB Media cards	PictBridge, USB flash memory drive Memory Stick Duo/Pro Duo/Micro, Secure Digital (SD), Secure Digital High Capacity (SDHC), Secure Digital Extended Capacity (SDXC), Multimedia Card, Multimedia Card Plus, Multimedia Card Mobile
Direct print format	JPEG
Direct scanning format	JPEG, PDF (colour), TIFF, PDF (mono)

SOFTWARE

Driver software included	Brother MFL-Pro Suite
Software - Windows®	Brother ControlCentre4, Nuance® Paperport® 12 SE with OCR,
Software - Macintosh®	Brother ControlCentre2, NewSoft® OCR
Supported operating systems	Windows® 8 Windows® 7 Windows Vista® Windows® XP Windows Server® 2003 & 2003 R2 Windows Server® 2008 & 2008 R2 Windows Server® 2012 & 2012 R2 Mac OS X v10.7.5/10.8.x/ 10.9.x

SUPPLIES

Standard cartridges	LC223 BK/C/M/Y black and colour - approx. 550**** A4 pages
High yield cartridges	LC225 XL C/M/Y colour - approx. 1,200**** A4 pages
Brother paper	LC227 XL BK black - approx. 1,200**** A4 pages BP71GA3: A3 glossy photo paper, 20 sheets BP71GLA: A4 glossy photo paper, 20 sheets BP71GLP: 4x6" glossy photo paper, 20 / 50 sheets BP60MA: A4 matte inkjet paper, 25 sheets BP60PA: A4 inkjet paper, 250 sheets



WEIGHTS & DIMENSIONS

With carton	W569 x D242 x H398mm 10.1kg
Without carton	W480 x D290 x H163mm 8.1kg

OTHERS

Power consumption	Operating: Approx. 23W Ready: Approx. 5.0W Sleep: Approx. 1.3W Off: Approx 0.04W
Sound pressure level (operating)	50dBA (Average)



DCP-J4120DW

brother
at your side



PRINT - SCAN - COPY - FAX
THE ALL-IN-ONE INKJET THAT'S
A PERFECT FIT FOR YOUR BUSINESS

WELCOME TO **PRINT 3.0**



Contact:

brother
at your side

Brother International Europe Ltd

Brother House, 1 Tame Street, Audenshaw, Manchester M34 5JE

Tel: +44 (0)161-330 6531 Fax: +44 (0)161-330 5520

Website: www.brother.eu

All specifications correct at time of printing. Brother is a registered trademark of Brother Industries Ltd. Brand product names are registered trademarks or trademarks of their respective companies.

INTRODUCING

THE DCP-J4120DW

THE PERFECT FIT FOR YOUR BUSINESS

Change how you look at office printing. The DCP-J4120DW is a robust inkjet printer designed specifically to enhance productivity. Features such as automatic 2-sided print, connectivity to your mobile devices and A3 printing are all packed into its compact size, raising efficiency without losing valuable desk space.

Welcome to a new age of printing. WELCOME TO **PRINT 3.0.**



ENHANCED CONNECTIVITY

With built-in wireless networking, the cloud connected DCP-J4120DW ensures seamless connections to your PC and mobile devices. Scan to and print directly from cloud services such as Dropbox, Evernote™ and Google Drive to digitise your paper-based content.



MOBILE INTEGRATION

Brother's mobile print and scan app provides seamless compatibility with Apple, Android and Windows devices. Print from or scan to your smartphone or tablet using the easy-to-use Brother iPrint&Scan app.



PRODUCTIVE

The DCP-J4120DW comes packed with a range of productivity solutions to help streamline your work, boasts fast print and scan speeds, and has an intuitive touch screen that's easy to navigate.



COST EFFECTIVE

High yield ink cartridges capable of up to 1,200 black and colour prints combined with other cost-saving features like 2-sided printing and ink save mode help to lower operating costs.



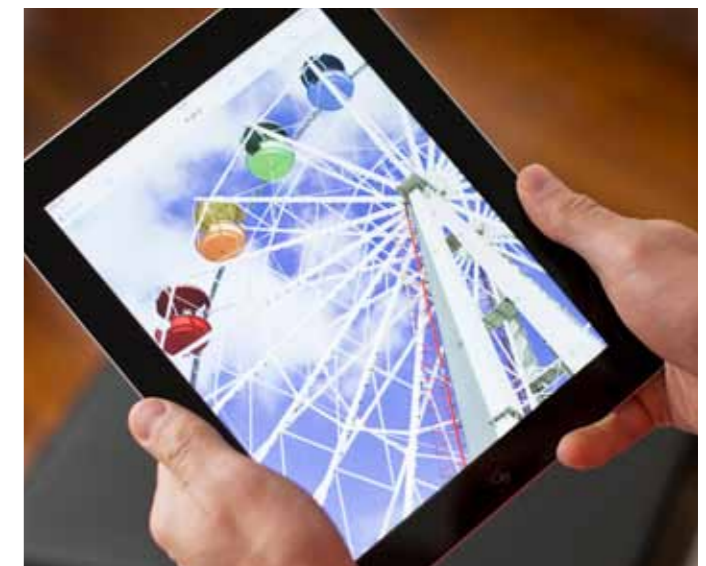
PROFESSIONAL

Ensure that your business is noticed by using the rear feed slot to print documents in A3 size. With a resolution of up to 6,000 x 1,200dpi, your prints will always look professional.



Key facts

- 20ipm mono and 18ipm colour print speeds*
- Up to 1,200 page black and colour XL ink cartridges
- Automatic 2-sided A4 print plus scan & copy at up to A4 paper sizes
- Print & scan from your smartphone or tablet
- Built-in Wi-Fi
- 6.8cm touchscreen colour LCD
- Rear Manual feed slot for up to A3 size paper
- 150 sheet A4 paper tray



*ISO/IEC 24734