

MFC-6800 Quick Setup Guide

brother

THANK YOU!

CONGRATULATIONS ON PURCHASING THE ULTIMATE BROTHER MACHINE. WE ARE SURE YOU WILL BE THRILLED WITH THE CONVENIENT WAY YOUR NEW MACHINE PERFORMS SO MANY TASKS WITH DAZZLING RESULTS!

Follow these simple instructions in numerical order.

For more details, press **Reports** and ① on your machine or see your Owner's Manual.

If you cannot solve a problem:

Refer to **Frequently Asked Questions (FAQs)** on Brother World Wide Web;

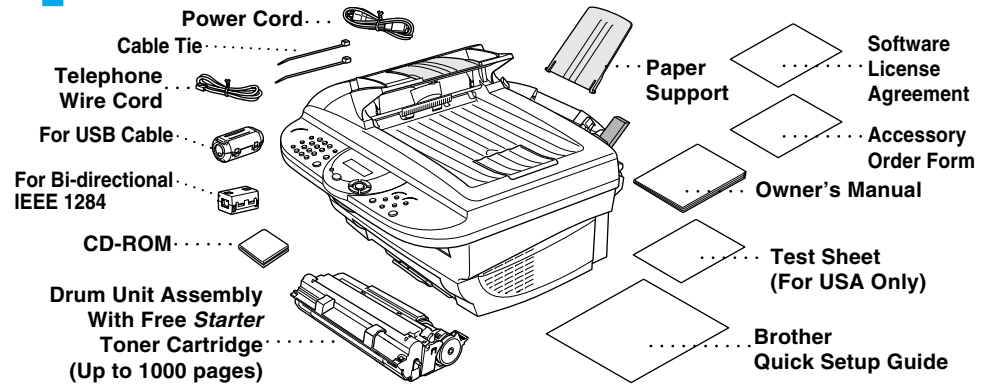
URL: <http://solutions.brother.com>

Call Brother Customer Service at:

USA: 1-800-284-4329 (9AM-5PM EST)
1-800-284-3238 (TTY service for the hearing impaired)

In Canada: 1-877-BROTHER (8AM-8PM EST)
1-514-685-6464 (in Montreal)

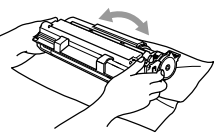
1 Packing List



Keep the packing materials for possible future transport. If you do not pack the machine properly, it may void your warranty.

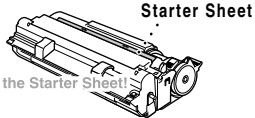
2 Install the Drum Unit

A. Unpack the drum unit assembly, and gently rock it from side to side five or six times to distribute the toner evenly inside the cartridge.



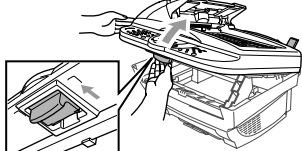
To prevent damage to the drum, do not expose it to light for longer than a few minutes.

Do NOT remove the clear plastic starter sheet—this will be ejected while the MFC is warming up.

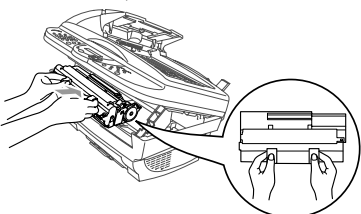


Do NOT remove the Starter Sheet!

B. Open the top cover of the machine by pulling the lever toward you and lifting the cover.



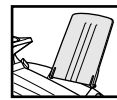
Holding the drum unit by its handles, insert it into the MFC.



D. Close the top cover.

3 Attach the Plastic Supports and Pull out the Paper Tray

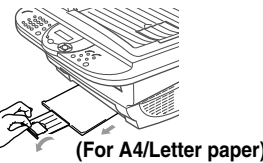
A. Attach the plastic paper support to the multi-purpose sheet feeder.



B. Pull out the paper tray and the extension.

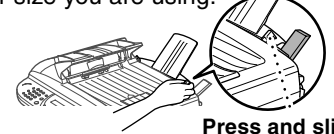


C. If your paper size is A4 or Letter, unfold the paper stopper by pulling it toward you.



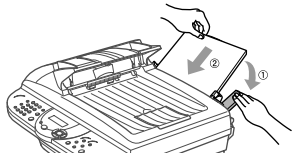
4 Load Paper

A. Adjust the guides to the position for the paper size you are using.



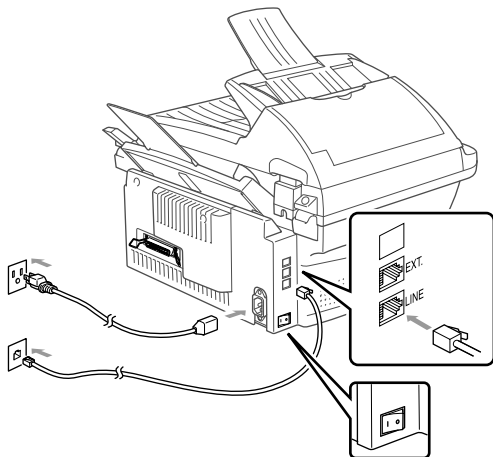
B. Fan the paper well.

C. Push down the paper lever. Load the paper (with the lever down). Make sure the print side is toward the fax machine and the paper level is stacked below the paper mark. The feeder can hold up to 200 sheets of paper, or up to 10 envelopes.



Load the paper with the lever down

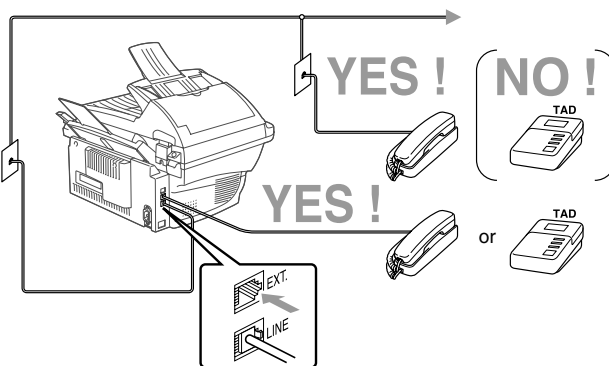
5 Install Power Cord and Phone Line



Turn the power switch ON.

Do Not connect the Parallel or USB Cable.

6 If you are sharing one phone line with an external telephone or telephone answering device (TAD), connect it as shown below.



7 Select a Receive Mode

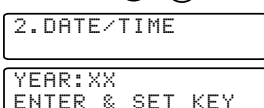
Choose the mode that best suits your needs by pressing **Receive Mode** repeatedly until the screen displays the setting you want to use.

LCD	How it works
FAX ONLY (automatic receive)	The MFC automatically answers every call as a fax.
EXT.TEL/TAD (manual receive) (With an External Telephone)	If an external telephone is connected to the EXT. jack, you control the phone line and must answer every call yourself.
(automatic receive) (With an External Telephone Answering Device)	If an external TAD (telephone answering device) is connected to the EXT. jack, the TAD automatically answers every call. Voice messages are stored in the external TAD. Fax messages are printed.
MANUAL (manual receive) (With an External Telephone)	You control the phone line and must answer every call yourself.

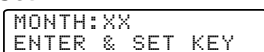
For more details, see page 4-1 in Owner's Manual, or 5-1 in Owner's Manual that is included on the CD-ROM.

8 Set Date and Time

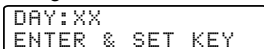
A. Press **Menu/Set**, ①, ②.



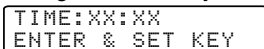
B. Enter the last two digits of the year and press **Menu/Set**.



C. Enter two digits for the month and press **Menu/Set**.



D. Enter two digits for the day and press **Menu/Set**.



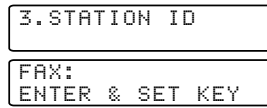
E. Enter the time in 24-hour format and press **Menu/Set**.

F. Press **Stop/Exit**.

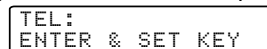
Note: If you can't step forward, press **Stop/Exit** and repeat from Step A.

9 Set Station ID

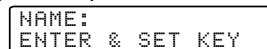
A. Press **Menu/Set**, ①, ③.



B. Enter your fax number, then press **Menu/Set**.



C. Enter your telephone number, then press **Menu/Set**.



D. Enter your name using the dial pad and the chart below, then press **Menu/Set**. Use the right arrow to create spaces.

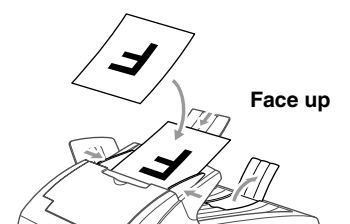
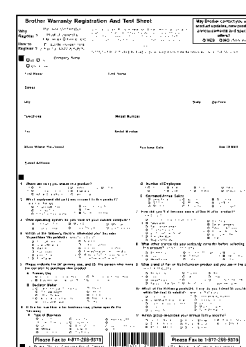
E. Press **Stop/Exit**.

For more details, see page 3-2 in Owner's Manual, or 4-2 in Owner's Manual that is included on the CD-ROM.

Note: If you can't step forward, press **Stop/Exit** and repeat from Step A.

Key	once	twice	three times	four times	five times
2	A	B	C	2	A
3	D	E	F	3	D
4	G	H	I	4	G
5	J	K	L	5	J
6	M	N	O	6	M
7	P	Q	R	7	P
8	T	U	V	8	T
9	W	X	Y	9	W

10 For the USA, complete the Warranty Registration and Test Sheet...



Press **Fax Start**.

...and fax it to Brother at: 1-877-268-9575

Setting Up the MFC and PC to Work Together

Before You begin

- You must set up the hardware and install the driver before you can use your MFC as a printer and scanner with your application.
- Please see the README.WRI file in the root directory of the CD-ROM for last-minute important installation and troubleshooting information.
- Please purchase the appropriate interface cable you intend to use (Parallel or USB).
- If you have any problem for installation, visit us at: <http://solutions.brother.com>

! Use only a shielded parallel interface cable that is IEEE 1284-compliant and/or a USB cable that is no longer than 6 feet long (1.8 meters).

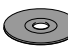
Follow the instructions in this guide for your operating system and interface.

For Windows® 95/98/98SE/Me/2000 Users

Step 1. Turn the MFC power switch OFF and disconnect your MFC from your computer if you already connected an interface cable.

Step 2. Turn on your computer.

For Windows® 2000 Professional, you must be logged on as the Administrator.

Step 3.  Insert the CD-ROM into the CD-ROM drive. If the model name screen appears, click on your model name. The CD-ROM main menu will appear. (If this window does not appear, use Windows® Explorer to run the setup.exe program from the root directory of the Brother CD-ROM.)



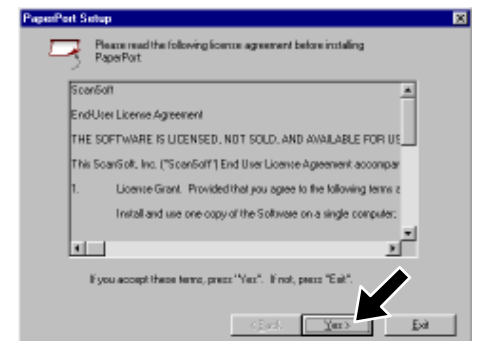
1. Click **Install Software**.



2. Click **Multi-Function Link® Pro Suite** in **Main Application**. *1



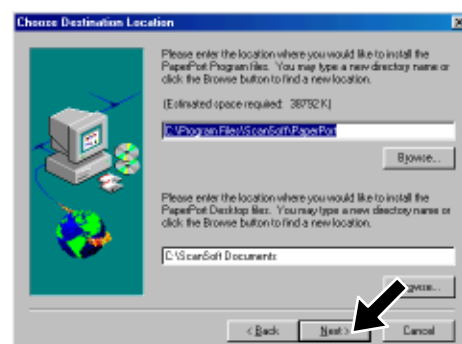
3. Click **Install**.



4. The InstallShield Wizard Setup window will appear briefly, followed by the PaperPort® Setup window. Click **Yes**.



5. When the PaperPort® Setup window displays your Name and Company, either change or accept them, and then click **Next**.



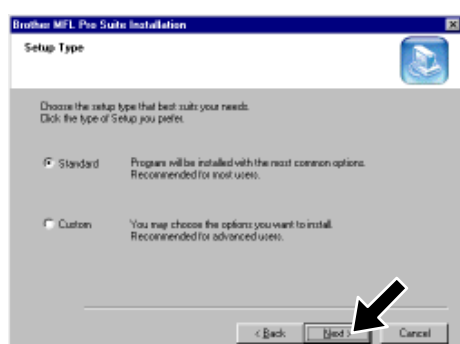
6. When the Choose Destination Location window displays the path where the PaperPort® files will be installed, either change or accept, and then click **Next**.



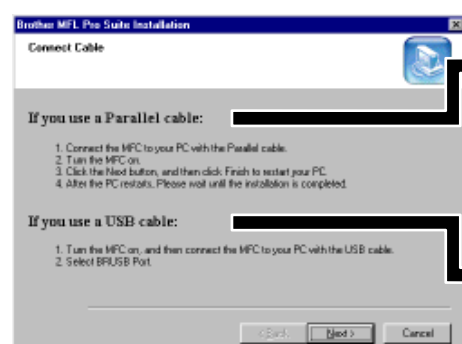
7. When Register Today screen appears, click **Next**. This is registration for PaperPort®. Follow the instructions.



8. When the Brother MFL Pro Suite Installation window appears, click **Next** to begin installing the Multi-Function Link® Pro Suite. *2

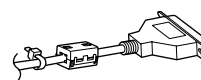


9. When the Setup Type window appears, select **Standard**, and then click **Next**. The application files will be copied to your computer.

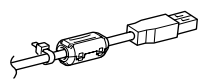


10. The Connect Cable window will appear.

For Parallel



For USB



Please see **NEXT PAGE**

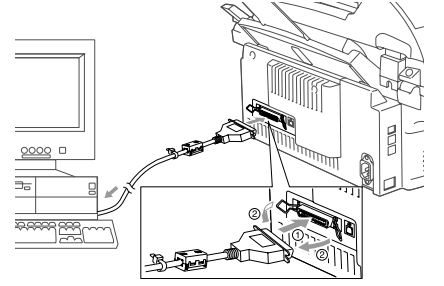
*1 Multi-Function Link® Pro Suite includes Printer Driver, Scanner Driver, ScanSoft™ PaperPort®, ScanSoft™ Text Bridge®, PC-FAX software, Remote Setup and True Type fonts. PaperPort® is a document management application for viewing scanned documents. ScanSoft™ TextBridge®, which is integrated into PaperPort®, is an OCR application that converts an image into text and inserts it into your default word processor.

*2 If an error message appears during the installation process, or you have previously installed MFL Pro Suite, you will first have to uninstall it. From the **Start** menu, select **Programs, Brother, Brother MFL Pro Suite, Uninstall**, and then follow the instructions on the screen.

*3 Even if you select **NO**, later you will be able to launch the Brother Control Center to use the Scan keys. See *AutoLoad the Brother Control Center*, Chapter 14 in the On-Line Documentation (Owner's Manual) on the CD-ROM.

Step 4. Connect the MFC to your PC with Parallel Cable.

- A. Connect the Filter Core and Cable Tie to the parallel interface cable.
- B. Connect the parallel interface cable to the parallel interface port of the MFC and secure the wire clips.
- C. Connect the interface cable to the printer port of the computer and secure it with the two screws. For the location of your computer's parallel printer port, see the User's Guide for your computer.



Step 5. Turn the MFC power switch ON.

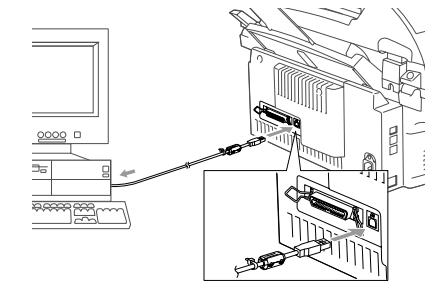
Step 6. The installation of the Brother driver will automatically start. Follow the instructions on the screen.

(For Windows® 95/98/98SE/Me Users)	(For Windows® 2000 Professional User)
<p>1. In the Connect Cable window, click Next.</p> <p>2. When the above screen appears, click Finish and wait as the PC restarts Windows® and continues the installation.</p> <p>3. Click Yes to have the Control Center loaded each time Windows® is started. The Control Center will appear as an icon in the task tray. If you click No the Scan keys on the MFC will be disabled. *3</p>	<p>1. In the Connect Cable window, click Next.</p> <p>2. When the above screen appears, Click Finish and wait as the PC restarts Windows® and continues the installation.</p> <p>3. When the Digital Signature Not Found dialog boxes appear, click Yes to install the driver.</p> <p>4. Click Yes to have the Control Center loaded each time Windows® is started. The Control Center will appear as an icon in the task tray. If you click No the Scan keys on the MFC will be disabled. *3</p>
<p>The Brother PC fax, Printer and Scanner drivers have been installed and the installation is now complete.</p>	<p>The Brother PC fax, Printer and Scanner drivers have been installed and the installation is now complete.</p>

Step 4. Turn the MFC power switch ON.

Step 5. Connect the Filter Core and Cable Tie to the USB cable, and then connect the MFC to your PC with the USB cable. (It will take a few seconds for the installation screen to appear.)

Step 6. The installation of the Brother driver will automatically start. Follow the instructions on the screen.



(For Windows® 98/98SE/Me Users)	(For Windows® 2000 Users)
<p>1. In the Add Printer Wizard window, select BRUSB: USB Printer Port, and then click Next.</p> <p>2. Accept the default Printer name by selecting Yes, and then click Next.</p> <p>3. Select Yes (recommended), and then click Finish. A test page will be printed so you can check the print quality.</p> <p>4. If the test page is printed correctly, click Yes. If you click No, follow the prompts on the screen to correct the problem.</p> <p>5. Select Yes to restart your computer, and then click Finish.</p> <p>6. Click Yes to have the Control Center loaded each time Windows® is started. The Control Center will appear as an icon in the task tray. If you click No the Scan keys on the MFC will be disabled. *3</p>	<p>1. When the Digital Signature Not Found dialog boxes appear, click Yes to install the driver.</p> <p>2. Select Finish to restart your computer.</p> <p>3. Click Yes to have the Control Center loaded each time Windows® is started. The Control Center will appear as an icon in the task tray. If you click No the Scan keys on the MFC will be disabled. *3</p>
<p>The Brother PC fax, Printer and Scanner drivers have been installed and the installation is now complete.</p>	<p>The Brother PC fax, Printer and Scanner drivers have been installed and the installation is now complete.</p>

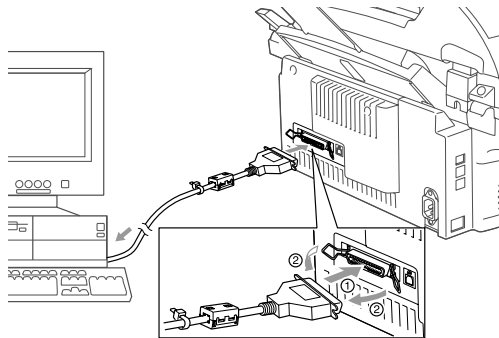
For Windows NT® Workstation Version 4.0 Users

Step 1. Check that your computer is turned ON.

You must be logged on as the Administrator.

Step 2. Connect the MFC to your PC with the Parallel Cable.

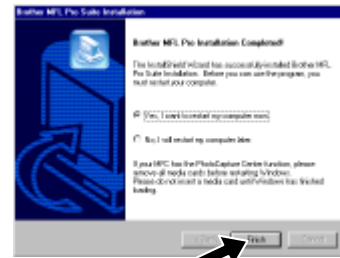
- Connect the Filter Core and Cable Tie to the parallel interface cable.
- Connect the parallel interface cable to the parallel interface port of the MFC and secure the wire clips.
- Connect the interface cable to the printer port of the computer and secure it with the two screws. For the location of your computer's parallel printer port, see the User's Guide for your computer.



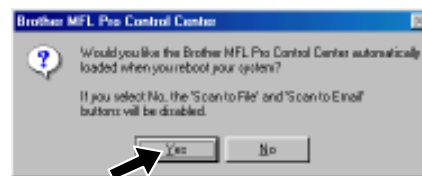
Step 3. Turn the MFC power switch ON.

Step 4. Insert the CD-ROM into the CD-ROM drive. Then, follow the instructions on the screen.

(Same step as for Windows® 95/98/98SE/Me/2000 Users **Step 3.**, 1 to 9)



- Select **Yes** to restart your computer, and then click **Finish**.



- Click **Yes** to have the Control Center loaded each time Windows is started. The Control Center will appear as an icon in the task bar. If you click **No**, the Scan keys on the MFC will be disabled.*3

The Brother PC fax, Printer and Scanner drivers have been installed and the installation is now complete.

For Apple® Macintosh® QuickDraw® Driver for OS 8.6/9.0/9.0.4/9.1 Users

Step 1. Make sure your MFC power switch is turned OFF and your Macintosh is turned ON.

- ⚠ Make sure you do NOT connect your MFC to your Macintosh

Step 2. Insert the CD-ROM into your CD-ROM drive.

Installing MFL Pro Driver

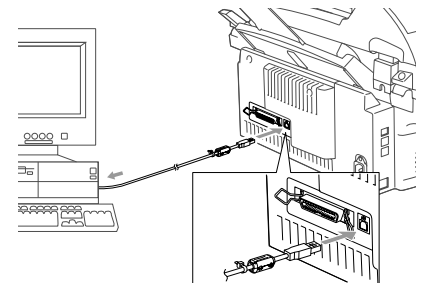


- When the window appears, double-click **MFL-PRO Suite Driver Installer** to install the printer and scanner drivers. After the installation is completed, the screen prompts you to restart your Macintosh.

Step 3. Restart your Macintosh so it can recognize the new driver.

Step 4. Connect the Filter Core and Cable Tie to the USB cable.

Step 5. Connect the MFC to your Macintosh with the USB cable, and then turn the MFC power switch ON.



Step 6. Select the Printer.



- From the Apple menu, open the **Chooser**.
- Click to highlight the printer driver icon you installed. On the right side of the **Chooser**, select the printer to which you want to print. Close the **Chooser**.

Step 7. Install Paper Port.



- Double-click the **PaperPort®5.5 Installer**. *1
- Follow the instructions on the screen.

The Brother PC fax, Printer and Scanner drivers have been installed and the installation is now complete.

What is included on the CD-ROM

Windows

You can get a variety of information from this CD-ROM



(For Windows®)

Install Software

You can install printer and scanner drivers and the various utility items.

On-Line Registration

You will be pointed to a directory on the Brother Product Registration Web page.

On-Line Documentation

View the Owner's Manual and other documentation.

Brother Support

Get all contact you need if you have to get in touch with our Customer Service, or Brother Authorized Service Center.

Help

Helpful hints.

Macintosh

You can get a variety of information from this CD-ROM



(For Macintosh®)

MFL Pro Driver Installer

You can install the PC FAX send, printer and scanner drivers and the various utility items.

PaperPort 5.5 Installer

You can install a document management application used to view scanned documents.

ReadMe!

You can get important information and troubleshooting tips.

Documents

View the Owner's Manual and other documentations.