

Professional A3 Colour Inkjet Multifunction Duplex Printer with Touchscreen LCD and Network

Do More with the MFC-6890CDW. Get stunning versatility with printing, faxing, copying and scanning up to A3 as well as economical performance with automatic A4 duplex, excellent energy efficiency and high yield cartridges.

Compact size, great multifunctionality: the MFC-6890CDW can print, fax, copy and scan up to A3, yet it is hardly bigger than other A4 inkjet multifunction printers.

Reduce paper use in the office with automatic duplex (A4 only) printing. For professional results, the MFC-6890CDW can make small skew adjustments automatically, and it's easy to create posters, booklets, or add a watermark to your printouts.

Securely share the MFC-6890CDW within your existing wireless or wired network. Scan to Email, Scan to FTP and Internet Fax (sending fax messages over the internet) are great tools to easily manage your documents.



MFC-6890CDW Technical Specifications

General	
Technology	Inkjet
Memory Capacity	64MB
Warm-up Time	0 seconds
Interfaces	Hi Speed USB 2.0 / USB Direct / PictBridge / Media cards
Network	10/100 Base-TX, Wireless LAN IEEE802.11b/g (Infrastructure Mode/Adhoc Mode)
Protocols	TCP/IP (IPv4 & IPv6)
Wireless Setup	Secure Easy Setup™ (SES), Wi-Fi Protected Setup™ (WPS), AirStation OneTouch Secure System™ (AOSS)
Wireless Security	WEP 64/128, WPA-PSK (TKIP), WPA2-PSK (TKIP&AES)
Display	Wide 4.2" Colour Touchscreen LCD
Colour Printer	
Speed	Up to 35ppm mono & 28ppm colour
Resolution	Up to 6,000 x 1,200 (Vertical x Horizontal)
Borderless Printing	Available for A3, A4, LTR, A6, Photo 4 x 6", Index Card, Postcard
Colour Enhancement	Brother Image enhancement allows you to customise colour output * 1.5pl (when used with Brother BP71 paper, see Supplies section)
Minimum Droplet Size	Print photos direct from a USB Flash memory Drive / Media Cards (See Direct Photo Print section)
Direct Photo Print	Print photos direct from a USB Flash memory Drive / Media Cards (See Direct Photo Print section)
Automatic Duplex Print	Automatically print on both sides of the paper. (Upto A4)
Colour Fax	
Modem	33.6kbps
Colour	Using the ITU-T-30E Colour Fax Protocol to other compatible fax machines
Data Compression	MH, MR, MMR (Mono), JPEG (Colour)
Automatic Redial	Automatic redial if the recipient fax is busy
Speed Dials	100 locations for pre-stored numbers
Group Dials	Up to 6 groups
Fax / Tel Switch	Automatic recognition of fax and telephone reception
Distinctive Ring Detection	Yes - UK & Denmark only
Super Fine	Enables quality transmission and reception of very small print or line drawings
Grey Scale	256 shades of grey
Memory Transmission	Up to 400 pages (ITU-T Test Chart No 1)
Out of Paper Reception	Up to 400 pages (ITU-T Test Chart No 1)
Broadcasting Locations	Send the same fax message to up to 256 locations
Auto Reduction	Automatically reduces a received fax to fit on to a single A4 sheet
Error Correction Mode	Where machines share the ECM feature, errors during transmission are corrected automatically ensuring received documents are error free
Fax Forwarding	Sends a fax received in memory to another pre-programmed fax number (Mono only)
Remote Access	Allows the user to remotely access their machine by using another touch tone phone
Fax Retrieval	Allows the user to retrieve fax messages using another touch tone machine (Mono only)
Dual Access	Scan a fax for transmission whilst receiving a fax (Mono only)
Internet Fax	Fax documents anywhere in the world over the internet without the use of a telephone line
PC-FAX*	Send & Receive faxes from your PC (phone line required)
Colour Copier	
Speed	Up to 23ppm mono & 20ppm colour
Resolution	Up to 1,200 x 1,200dpi (colour), 1,200 x 1,200dpi (mono)
Multi copy	Produces up to 99 copies of each original
Enlargement / Reduction Ratio	25% - 400% in 1% increments
N in 1	Reduce 2 or 4 pages on to a single sheet
Poster Printing	Enlarge an image to print onto 3 x 3 pages of A4 size (available for A4 only)
Colour Scanner	
Resolution	Optical: Up to 1,200 x 2,400dpi Interpolated: Up to 19,200 x 19,200dpi
Scan Speed	From 4 seconds Mono & from 6 seconds Colour (A4 size, 100 x 100dpi)
Grey Scale	256 shades of grey
Colour Depth	36bit internal processing colour scanner
Scan* Key	Allows the user to scan to e-mail, OCR, Image, File, Card, USB Flash Memory Drive or FTP
	Supporting: JPEG, BMP, PDF, TIFF, PNG (USB Flash Memory Drive supports PDF Mono & Colour, JPEG, TIFF).
Paper Handling	
Paper Input	100 sheet standard paper tray 250 sheet lower tray 50 sheet automatic document feeder (ADF)
Paper Output	50 sheets
Paper Handling Sizes	A3, A4, LTR, LGL, EXE, A5, A6, Photo 4 x 6", Index Card, Postcard, Envelope plus additional sizes
Media Type	Plain, Inkjet, Glossy, Transparency
Direct Photo Printing	
PictBridge	Print directly from a PictBridge enabled Digital Camera
USB Direct Interface	Print directly from a USB Flash Memory Drive
PhotoCapture Centre™ (Acceptable Media Cards)	Compact Flash: 4MB-8GB (Type1 only, Type2 & Microdrive are not compatible) Memory Stick: 16MB-128MB (Duo with Adapter) Memory Stick Pro: 256MB-8GB (MagicGate: YES if not use MG function) Secure Digital: 16MB-2GB (MiniSD) Secure Digital High Capacity (SDHC): 4-8GB xD Picture Card: 16-512MB xD Picture Card TypeM / M+ / TypeH: 256MB-2GB
Media Card Drive	Save & retrieve files using any of the above listed media cards
Network Media Card Drive	Save & retrieve files using any of the above listed media cards through the network
Image Format	Photo Print: JPEG Scan to Card: JPEG, PDF (colour), TIFF, PDF (mono)
Software	
Driver Software Included	Brother MFL-Pro Suite
Windows®	Brother ControlCentre3, ScanSoft® Paperport® 11 SE with OCR
Macintosh®	Brother ControlCentre2, NewSoft® Presto!® PageManager7
Reallusion® FaceFilter	A simple and easy to use photo editor that enables you to fine-tune your photos to print perfect, professional looking photos with or without borders.
Studio Software	Windows Vista® / Windows® XP Professional (32 & 64 bit editions) / XP Home Edition / Windows® 2000 Professional (SP4) / Mac OS X 10.2.4 or greater
Supported Operating Systems	
Supplies	
Standard Cartridges	Black: LC1100BK - Approx 450** A4 pages Cyan / Magenta / Yellow: LC1100C/M/Y - Approx 325** A4 pages
High Yield Cartridges	Black: LC1100HY-BK - Approx 900** A4 pages Cyan / Magenta / Yellow: LC1100HY - C/M/Y - Approx 750** A4 pages
Brother Paper	BP71GA3: A3 glossy photo paper, 20 sheets BP71GLA: A4 glossy photo paper, 20 sheets BP71GLP: 4x6" glossy photo paper, 20 / 50 sheets BP60MA: A4 Matte inkjet paper, 25 sheets BP60PA: A4 inkjet paper, 250 sheets
Weights & Dimensions	
With Carton	656(W) x 597(D) x 460(H) mm / 22.1kg
Without Carton	540(W) x 488(D) x 323(H) mm / 15.6kg
Others	
Power Consumption	Operating - 29W Standby - 6.4W Power Save - 4.5W
Noise level	50dBA (Maximum)
	* Receiving is for Windows® only ** Approx. cartridge yield is declared in accordance with ISO/IEC 24711

Contact:

brother
at your side

Brother International Europe Ltd
Brother House, 1 Tame Street, Audenshaw, Manchester M34 5JE
Tel: + 44 (0) 161-330 6531 Fax: + 44 (0) 161-330 5520
Website: www.brother.com

All specifications correct at time of printing. Brother is a registered trademark of Brother Industries Ltd. Brand product names are registered trademarks or trademarks of their respective companies.

brother
at your side



MFC-6890CDW

Professional A3 Colour Inkjet Multifunction
Duplex Printer with Touchscreen LCD
and Wired/Wireless Network



Do More at a lower cost: the MFC-6890CDW offers A3 printing, faxing, copying and scanning, high yield cartridges, and duplex to reduce paper use in the office. Network connectivity, flexible paper handling and a Touchscreen LCD add to its impressive ease of use.

- Fast printing: up to 35 mono and 28 colour pages per minute.
- Versatile printing, faxing, copying, scanning up to A3.
- Automatic A4 double-sided (duplex) printing.
- Secure, easy to use wireless and wired network.
- High quality printing at 6,000dpi, with a minimum droplet size of 1.5 picolitres (pl).
- Touchscreen LCD display for increased usability.
- Even lower cost per copy with new Innobella High Yield cartridges.
- Flexible paper handling with two trays and a 350-sheet capacity.
- 50-page Automatic Document Feeder (ADF) to swiftly fax, copy and scan multipage documents.

Do More

MFC-6890CDW



Versatile – and amazingly good value

Print, fax, copy and scan all your documents up to A3 using just one compact, stylish, high-speed machine. High yield Innobella cartridges are bundled with your multifunction printer, bringing your cost per page down to a minimum. Automatic duplex (A4 only) allows you to reduce paper use, while the MFC-6890CDW's commendable energy efficiency is ENERGY STAR-certified, and it has been awarded the prestigious German Blue Angel for its low noise levels and use of non-hazardous materials. Eliminate transmission costs with the Internet Fax option.

Incredibly easy to use

Make use of the wide variety of functions with the 4.2" wide Touchscreen LCD: it's simple to use whether you want to preview fax messages, copy bound documents, easily add a watermark or Scan to Email. Two separate paper trays with a total capacity of 350 sheets enable you to stock different kinds of paper, and the 50-page Automatic Document Feeder (ADF) allows swift, unattended copying, faxing and scanning of multipage documents. For high quality document copies, the MFC-6890CDW can make small skew adjustments automatically.

Professional print quality

An excellent resolution of up to 6,000dpi, together with an ink droplet size of just 1.5pl, guarantees professional quality photo printing. Text documents are razor-sharp and don't smudge thanks to the use of pigmented inks. By using Innobella inks and papers with the MFC-6890CDW you can achieve maximum quality printing with the minimum amount of ink (using 4 cartridges instead of 5 or more).

Saving you time

Print up to 35 mono and 28 colour pages per minute in A4 and a 4x6 inch photo in as little as 30 seconds. Save time by printing direct from a USB memory stick, media cards and cameras via Pictbridge or by scanning to your USB memory stick. With wireless and wired connectivity, share the MFC-6890CDW within your existing network to use its resources even more efficiently. This also allows you to use time-saving features such as Scan to FTP, LDAP or Scan to Email Server. The BRAdmin Light software (downloadable free of charge from Brother's Solutions Centre website) makes it easy to centrally manage your office's Brother printing devices.

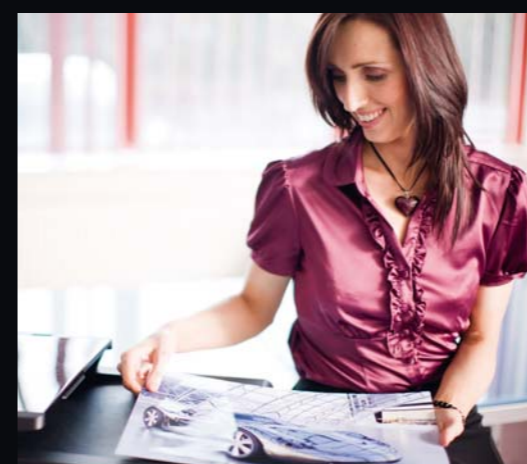


Do More

Get cost-cutting performance with the compact, versatile MFC-6890CDW offering up to A3 printing, faxing, copying and scanning, high yield ink cartridges, and automatic A4 duplex.



Fax, copy or scan your A3 documents.



Create an impact - with colour printing up to A3



Automatic Document Feeder – ideal when faxing, copying or scanning multiple page documents.