



- 
Colour Print
- 
Colour Fax
- 
Colour Copy
- 
Colour Scan

The Brother MFC-9420CN

Brother brings you its colour laser multifunction machine. Whether its colour printing, faxing, copying or scanning, the MFC-9420CN does it all in one reliable, space saving solution.



UP TO
31
PPM MONO

UP TO
8
PPM COLOUR

UP TO
2,400
DPI PRINT
RESOLUTION

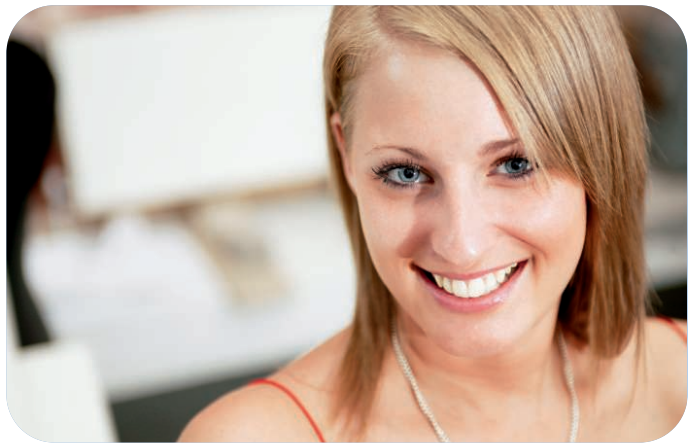
UP TO
250
SHEET PAPER
CAPACITY

UP TO
35
SHEET ADF

**NETWORK
READY**

The MFC-9420CN from Brother

Professional print, fax,
copy and scan functions
all in one machine and
all in colour.



Professional colour printing



Colour Print



Colour Fax



Colour Copy



Colour Scan

The ideal choice for small and medium sized businesses, this all-in-one will maximise productivity and office efficiency by handling the many demands from multiple users.

Whether printing a simple text document or a complex colour presentation, the MFC-9420CN brings high quality printing to your workgroup. Your workgroup will benefit from the 250 sheet paper tray and, should demand increase, you can expand paper capacity to up to 780 sheets with an optional 530 sheet paper tray



- Up to 31ppm mono, up to 8ppm colour
- Up to 600 x 600dpi resolution (2,400dpi class)
- 64MB standard memory (expandable to up to 576MB)
- Up to 250 sheet paper capacity
- PCL®6 & BR-Script 3 (PostScript® 3 Language Emulation)
- Memory Security

Super G3 colour faxing



Colour Print



Colour Fax



Colour Copy



Colour Scan

Send and receive colour or mono fax messages with the impressive performance that you've come to expect from a laser machine.

One-touch and speed dial locations make communication with your most frequently used numbers quick and simple.

The automatic document feeder is ideal when sending multiple pages, whilst the flatbed enables you to fax from bound documents.



- 33.6kbps modem speed
- 16 one-touch dials
- 200 speed dials
- Up to 35 sheet automatic document feeder
- Flatbed design
- Up to 400 page transmit/receive memory

*ITU-T #1 chart with MMR coding, standard resolution

Simple colour copying



Colour Print



Colour Fax



Colour Copy



Colour Scan

Create professional colour or black and white copies at the touch of a button. As with faxing, you can copy from a variety of media thanks to the provision of both an automatic document feeder and a flatbed.

Reduce paper usage and costs by copying 2 or 4 pages onto one A4 sheet – simply select this option from the LCD menu. Colour copying made easy and accessible for all your workgroup.



- Up to 99 multi-copies
- Stack and sort functions
- 2 in 1 and 4 in 1 copying
- Poster printing

Quality colour scanning



Colour Print



Colour Fax



Colour Copy



Colour Scan

High quality results are guaranteed thanks to a scan resolution of up to 9,600dpi. This all-in-one comes complete with the very latest scanning software, giving you a range of options including Scan-to-email, OCR, image, or file.

Another benefit is that you can utilize the scanner function whilst operating in another mode, for example; whilst receiving a fax or printing another document.



- Up to 9,600dpi interpolated resolution
- 48 bit colour depth
- TWAIN / WIA compliant
- Includes ScanSoft® PaperPort® for Windows® and NewSoft® Presto!® PageManager® for Macintosh® software

Advanced network features

This multifunction comes complete with a built-in network facility, enabling your workgroup to share the printing, PC-faxing and scanning features.

The MFC-9420CN supports the popular TCP/IP protocol used by Windows® and Macintosh® operating systems for connecting computers on a network or the Internet. Hi-Speed USB 2.0 and Parallel ports are also provided as standard, meaning connecting to this machine couldn't be easier.

- Integrated 10/100 Base-TX
- BRAdmin Professional Management software included



Quality consumables

As with all Brother colour laser machines, the MFC-9420CN comes with four individual colour toner cartridges. Thanks to the front loading system, these cartridges are simple to install and replace. Using genuine Brother supplies will always ensure optimum performance of your machine.

Toner Reference

- TN-04BK black toner†
- up to 10,000 A4 pages
- TN-04C/M/Y: colour toners†
- up to 6,600 A4 pages

(MFC-9420CN is supplied with a 5,000† page Black toner and a 3,000† page toner for each Colour)

†Standard yield @ 5% coverage



Brother MFC-9420CN

- Up to 31ppm mono, 8ppm colour
- Up to 600 x 600dpi printing resolution (2,400 dpi class)
- Network ready
- 33.6k bps Super G3 modem speed
- 64MB standard memory (expandable to up to 576MB)
- Up to 250 sheet paper capacity
- Flatbed design
- 200 speed dials, 16 one-touch dials

The professional choice for your workgroup

The ideal choice for small and medium sized businesses, the MFC-9420CN will maximise productivity and office efficiency by handling the many demands from multiple users. This all-in-one comes with a built-in 10/100 Base-TX Ethernet, making it simple for your workgroup to print, fax, copy and scan across the network.

High Quality Colour Printing and Faxing

Whether printing a simple text document or a complex colour presentation, the MFC-9420CN brings high quality printing to your workgroup. You can also send and receive colour or mono fax messages at impressive speeds, thanks to the Super G3 fax modem.

Simple Colour Copying and Scanning

The MFC-9420CN comes with both an automatic document feeder and a flatbed, allowing you to fax, copy and scan from a variety of document types. Backlit function keys also enable you to easily identify and switch between these functions. For your convenience, Brother also includes the very latest scanning software.

Features that make the difference

As workgroup demands increase, so too can your memory and paper capacity. Memory is fully upgradeable to 576MB, whilst paper capacity can increase to up to 780 sheets with an additional lower tray. As with all Brother colour laser machines, the MFC-9420CN comes with four individual colour toner cartridges, meaning you only replace a single toner once it is empty, keeping costs low.



Technical Specifications MFC-9420CN

| General | |
|-----------------------------|--|
| Print Engine | Laser |
| Memory Capacity | 64MB standard / 576MB maximum |
| Memory BackUp | Yes (Up to 60 hours for standard memory) |
| Simultaneous Operation | (Print/Copy) (Print/Scan) |
| Automatic Document Feeder | Up to 35 sheets |
| Paper Capacity | Up to 250 sheets (Up to 780 sheets maximum) |
| Output Paper Capacity | Up to 250 sheets |
| LCD Size | 16 characters x 2 lines |
| Paper Handling Size | LTR/EXE/A4/A5/B5 |
| Colour Printer | |
| Speed (ppm) | Up to 31ppm - monochrome / Up to 8ppm - colour |
| Resolution | 600 x 600 dpi, 2,400 dpi class |
| First Print Out Time | Less than 15 secs (mono) / Less than 21 secs (colour) |
| Standard Print Language | Windows® GDI |
| Emulation | PCL®6 & BR-Script 3 (PostScript® 3 Language Emulation) |
| Secure Print | Yes |
| Colour Copy | |
| Speed | Up to 31cpm - monochrome / Up to 8cpm - colour |
| Resolution (dpi) | 600 x 600 dpi |
| First Copy Out Time | Mono 20 secs / Colour 30 secs (from ready mode) |
| Multi Copy (Stack / Sort) | Stacks & Sorts output copies as desired (Up to 99) |
| Reduction/Enlargement Ratio | 25% - 400% in 1% increments |
| N in 1 | Compress 2 or 4 pages on to a single A4 sheet |
| Poster | Enlarge image to poster size |
| Colour Scanner | |
| Resolution (Optical) | From Glass: Up to 1,200 x 2,400 dpi (colour & mono) From ADF: Up to 1,200 x 600 dpi (colour & mono) |
| Resolution (Interpolated) | Up to 9,600 dpi |
| Grey Scale | 256 shades of grey |
| Color Depth (Int. / Ext.) | 48 bit / 24 bit |
| Scan Type | Scan to e-mail / OCR / image / file |
| Interface (s) | |
| USB | Hi-Speed USB 2.0 connection as standard |
| Parallel | IEEE1284 Parallel cable port |
| Network | This model is supplied with a built-in 10/100 Base-TX network interface as standard |
| External TAD Interface | Yes |

| Colour Fax | |
|--|--|
| Modem Speed | 33.6kbps Super G3 |
| Data Compression | MH / MR / MMR / JPEG |
| Fax/Tel Switch | Automatic recognition of fax and telephone reception |
| Super Fine | Enables quality transmission and reception of very small print or line drawings (TX & RX) |
| Dual Access | Scan a fax for transmission whilst receiving a fax |
| One-Touch Dial | 16 (8 x 2) locations for one-touch auto dialling of pre-stored numbers |
| Speed Dial | 200 locations for two-touch auto dialling of pre-stored numbers |
| Group Dial | Up to 8 groups |
| Automatic Redial | Automatic redial if the recipient fax is busy |
| Distinctive Ring Detection | Yes - UK & Denmark only |
| Delayed Timer | Yes (Up to 50) |
| Transmit/receive memory | Up to 400 pages (ITU-T Test Chart, Standard Resolution, MMR) |
| ECM (Error Correction Mode) | Where machines share ECM, it resends the page(s) of a document where an error has occurred |
| Broadcasting Locations | Send the same fax message to up to 266 locations |
| Auto Reduction | Automatically reduces a received fax to fit on to a single sheet of A4 |
| PC-Fax | Yes (Send & Receive) |
| Remote Access | Allows the user to remotely access their machine by using another touch tone fax |
| Fax Retrieval | Allows the user to retrieve fax messages using another touch tone phone |
| Fax Forwarding | Sends a fax received in memory to another pre-programmed fax number |
| Supplies | |
| Toner Cartridge Black | TN-04BK : Up to 10,000 A4 pages @ 5% coverage |
| Toner Cartridge Cyan, Magenta, Yellow | TN-04C,M,Y : Up to 6,600 A4 pages @ 5% coverage |
| Weights and Dimensions | |
| Dimensions (WxDxH) / Weight w/ Carton | 575mm x 595mm x 760mm / Approx. 42.0kg |
| Dimensions (WxDxH) / Weight w/o Carton | 482mm x 437mm x 534mm / 34.5kg |
| Power Consumption | |
| Sleep | 80w or less |
| Standby | 200w or less |
| Peak | 1300w or less |

For more information regarding Systems Requirements, please visit <http://solutions.brother.com>

Contact:



Brother UK Ltd.
Shepley Street, Audenshaw, Manchester, M34 5JD
Tel: 0870 830 4000 (National Rate Call) Fax: 0870 830 4031
Web-site: www.brother.co.uk

Your calls to us may be monitored or recorded for training purposes. Specification correct at time of going to print. Brother is a registered trademark of Brother Industries Ltd. Brand product names registered trademarks or trademarks of their respective companies.