

MFC-9440CN Specifications

Print • Copy • Scan • Fax • Network

Copy

- Up to 16cpm (A4)
- Max. 1,200 x 600 dpi copy resolution
- Reduce/Enlarge from 25% to 400% in 1% increments
- Stack & sort multi copies

Built-in USB Host

- Direct Printing from USB media devices
- Print images directly with PictBridge compatible cameras, mobile phones and PDAs

Scan

- Max. 1,200 x 2,400 dpi optical scan resolution
- Reduce/Enlarge from 25% to 400% in 1% increments
- Scan from ADF or Flatbed (CIS)
- Scan to File / Image / Email / FTP / OCR / USB



Print

- Single-pass laser printing technology means colour printouts are now produced at the same speed as monochrome printouts.
- Up to 20ppm (A4)
- Up to 2,400 dpi print quality

Fax

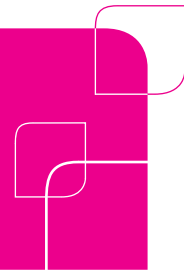
- 33.6 kbps Super G3 fax modem
- Up to 300 speed dials and 20 group dials
- Store up to 400 pages*
- PC Fax via network

Paper Input Capacity

- Standard Tray – 250 sheets
- Multi-purpose Tray – 50 sheets
- Automatic Document Feeder (ADF) – 35 sheets
- Optional Tray – 500 sheets

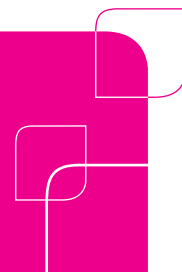
General	
Technology	Electrophotographic (Single-pass)
Simultaneous Operation	Print/Fax, Print/Scan, Print/Copy, Fax/Copy
Print	
Print Speed (A4/Letter Standard)	Up to 20ppm / 21ppm (A4/Letter)
Print Resolution	600 x 600 dpi, 2,400 dpi (2,400 x 600) quality
First Print Out Time (Mono/Colour)	Less than 16 secs / Less than 17 secs (From Ready Mode, Standard Tray)
Emulation	PCL®6 / BR-Script 3
Resident Fonts	66 scalable fonts, 12 bitmap fonts, 13 barcodes / 66 fonts
Fax	
Modem Speed	33.6k bps
Transmission Speed	Approx. 2 secs ¹
ITU-T Group	Super G3
Coding Method	MH / MR / MMR / JBIG / JPEG
Colour FAX Document	Send & Receive
Fax / Tel Switch	Yes
Automatic Redial	Yes
One-Touch Dials	16 (8 x 2) locations
Speed Dials	300 locations
Group Dials	Up to 20 groups
Broadcasting Locations	Up to 366 locations (One-Touch Dial + Speed Dial + Manual Broadcasting)
Manual Broadcasting	Up to 50 locations
Quick Scan (Memory Transmission)	Approx. 2 secs per A4 page
Auto Reduction	Yes
Error Correction Mode (ECM)	Yes
Super Fine	Yes (TX & RX)
Grey Scale	8bit / 256
Memory Transmission	Up to 400 pages ²
Out-of-Paper Reception	Up to 400 pages ²
Fax Forwarding	Yes
Fax Retrieval	Yes
Remote Access	Yes
Dual Access	Yes
Delayed Timer	Yes - up to 50 faxes
Polling	Yes (EUR Secure Polling)
Lists / Reports	Activity Report, Journal Report, Transmission Verification Report, Super Cover Page ³ , Help List, System Setup (User Setting) List, Order Form
PC Fax	
Sending	Yes, available for Windows® and Macintosh & Linux
Receiving	Yes, available for Windows® only
Copy	
Copy Speed	Up to 16 cpm/17cpm (A4/letter)
Copy Resolution	Max. 1200 x 600 dpi
First Copy Out Time (Mono/Colour)	Less than 21 secs / Less than 23 secs
Multi Copy (Stack)	Up to 99 sheets
Multi Copy (Sort)	Yes

MFC-9440CN Specification



Enlargement/Reduction Ratio	25% - 400% in 1% increments
N in 1	Yes
Scan	
Scan Resolution (Colour/Mono)	Max. 1,200 x 2,400 dpi (Optical/From Glass) Max. 19,200 x 19,200 dpi (Enhanced)
Grey Scale	256
Colour Depth	48-bit/24-bit
Document Size	Up to A4/Letter (From Glass) / Up to Legal (ADF)
Scan Type	Scan to Email, Image, OCR, File, FTP, USB
Controller	
Processor	300MHz
Memory Capacity	64MB (Expandable up to 576MB, using industry standard 1 x SO-DIMM (144 PIN) slot)
Interface	Hi-Speed USB 2.0
Network (Built-in)	10/100 Base-TX
Network Management Tools	BRAdmin Professional – Brother original Windows utility for printer and print server management Web BRAdmin – Server based management utility / Windows® IIS (4.0/5.0) mode only Web Based Management – Printer and print server management through web browser BRAdmin Light – Printer and print server management operates under Windows® and Mac OS® X 10.2.4 or greater Network Remote Setup
Network Security	SSL (Secure Socket Layer)
Protocols	TCP/IP (IPv4) ARP, RARP, BOOTP, DHCP, APIPA(Auto IP), WINS, NetBIOS name resolution, DNS Resolver, mDNS, LPR/LPD, Custom Raw Port/Port9100, IPP, IPPS, FTP Server, SSL/TLS, POP before SMTP, SMTP-AUTH, TELNET, SNMPv1, HTTP/HTTPS server, TFTP client and server, SMTP Client, APOP, LLTD responder, Raw Port(PC scanner), FTP Client TCP/IP (IPv6) NDP, RA, DNS, mDNS, LPR/LPD, Custom Raw Port/Port9100, IPP, IPPS, FTP Server, SSL/TLS, POP before SMTP, SMTP-AUTH, TELNET, SNMPv1, HTTP/HTTPS server, TFTP client and server, SMTP Client, APOP, LLTD responder, Raw Port (PC scanner)
Control Panel	
Display	1-colour (white) backlit LCD display with 2-lines, 16 characters 2 LEDs (Data & Direct)
Buttons	[Print] Direct, Secure, Job Cancel [Copy] Options, Enlarge/Reduce [Scan] One-touch scan key [Fax] Hook, Redial/Pause, Resolution Numerical Key Pad
USB Direct Interface	
PictBridge	Yes
USB Direct Print	Yes
File Formats	PDF Ver 1.6, JPEG, Exif+JPEG, PRN, TIFF
Paper Handling	
Paper Handling Size	Standard Paper Tray – A4, Letter, JISB5, ISOB5, A5, ISOB6, A6, Executive, Legal, Folio Multi-Purpose Tray – Width 69.8mm to 216mm, Length 116mm to 406.4mm Optional Tray - A4, Letter, JISB5, ISOB5, A5, ISOB6, Executive, Legal, Folio
Paper Input Capacity	Standard Paper Tray – 250 sheets (plain) Multi-Purpose Tray – 50 sheets / 3 sheets (envelope) Optional Tray - 500 Sheets
Paper Output Capacity	150 sheets (face down)
Automatic Document Feeder (ADF)	Up to 35 sheets
Media Specifications	
Media Types	Standard Paper Tray – Plain, Recycled Paper Multi-Purpose Tray – Plain, Thick Paper, Recycled Paper, Bond, Label, Postcard, Envelope Optional Tray - Plain, Recycled Paper
Media Weights	Standard Paper Tray – 60 to 105g/m ² (16 to 28lb) Multi-Purpose Tray – 60 to 163g/m ² (16 to 43lb) Optional Tray - 60 to 105g/m ² (16 to 28lb)
Media Sizes	Standard Paper Tray – A4, Letter, JISB5, ISOB5, A5, ISOB6, A6, Executive, Legal, Folio Multi-Purpose Tray – Width 69.8mm to 216mm, Length 116mm to 406.4mm Optional Tray - A4, Letter, ISOB5, A5, ISOB6, Executive, Legal, Folio
Software	
Printer Driver Support	Host-based for Windows® 2000 Professional, XP Home Edition, XP Professional (XP Professional & x64 Edition), Windows Sever® 2003 (32-bit & x64 Edition). Macintosh printer driver for Mac OS® X 10.2.4 or greater Linux printer driver for CUPS & LPD/LPRing printing system (x86 & x64 environment)

MFC-9440CN Specifications



Printer Driver Features	N-up Printing – Compress up to 2, 4, 9, 16 or 25 pages onto one single sheet Poster Printing – Enlarge an image to print on 2x2, 3x3, 4x4 or 5x5 onto a single sheet Watermark Printing Booklet Printing – Manual duplex option available Secure Print
Utilities	Colour restriction & colour control tools from printer driver Driver Deployment Wizard – Guides you through the steps of installing a Brother network printer on a networked Windows® PC
Web Download Utilities	http://solutions.brother.com See above list of Network Management Tools
Dimensions/Weight	
Dimensions	432(W) x 487(D) x 482(H) mm
Weight	Approx. 33kg
Others	
Power Consumption	Copy - Average 495W Standby - Average 95W Sleep - Average 28W
Noise Level	Printing Mode: Less than 54.5 dBA Standby Mode: Less than 30 dBA
Ecology	Power Save & Toner Save modes
Monthly Print Volume	500 to 3,000 pages

¹Brother #1 Chart at standard resolution on A4 size paper, JBIG.

²ITU-T Test Page at standard resolution on A4 size paper, JBIG.

³Not available for colour fax.