

MFC-J6920DW Technical Specifications

As part of the Print 3.0 range the MFC-J6920DW is designed to keep up with any busy office environment. With enhanced paper capacity of up to 500 sheets and high yield ink cartridges it can keep up with your print demands without the need to refill frequently.

Manage your documents effectively; the 2-sided scanner allows you to scan both sides of the page, making it even easier to archive your documents.

Print 3.0 allows you to be more connected than ever before. Scan across your existing wired or wireless network, or print directly from your mobile devices with AirPrint, Google Cloud Print™ or Brother's iPrint&Scan app with NFC connectivity, making it easier to share your printer across multiple users.

You can also connect to your online accounts from your machine allowing you to print from or scan directly to Box, Dropbox, EVERNOTE®, Facebook, FLICKR®, Google Drive™, Picasa™ & SkyDrive® without the need for a PC.

Use the 9.3cm LCD touchscreen to access the easy to use menu system and range of user-friendly, time-saving functions including scan to USB, email or FTP server and preview fax messages.

The MFC-J6920DW complies with the ENERGY STAR and the German Blue Angel environmental standard, ensuring low energy consumption, low noise levels and a recycle-friendly design.

GENERAL

Memory Capacity	256MB
Connectivity	Hi Speed USB 2.0, Wireless 802.11b/g/n, Ethernet 10/100BASE-TX
Mobile Connectivity	iPrint&Scan app, AirPrint, Google Cloud Print™, Wi-Fi Direct™, NFC
Display	9.3cm LCD touchscreen display

COLOUR PRINTER

Speed (Laser Comparable)*	22ipm mono & 20ipm colour
Speed (Fast Mode)	Up to 35ppm mono & 27ppm colour
2 sided Print	Fully automatic 2 sided print up to A3 paper size
Resolution	Up to 6,000 x 1,200 (Vertical x Horizontal)
Minimum Droplet Size	1.5pl (when used with Brother BP71 paper, see Supplies section)
Direct Photo Print	Print photos direct from a USB Flash memory Drive / Media Cards (See Direct Photo Printing section)

COLOUR FAX

Modem	33.6kbps
Speed Dials	100 locations for pre-stored numbers
Page Memory	Up to 200 pages (ITU-T Test Chart No 1)
Error Correction Mode	Where machines share the ECM feature, errors during transmission are corrected automatically ensuring received documents are error free
Other Functions	Fax forwarding, remote access, fax retrieval, dual access, I-Fax**, PC-Fax send, PC-Fax receive**, auto reduction, group dials

COLOUR COPIER

2 sided Copy	Fully automatic 2 sided copy from the ADF up to A3 paper size
Speed ****	12ipm mono and 9ipm colour
Resolution	Up to 1,200 x 2,400dpi (colour and mono)
Multi Copy	Yes 99 copies
Enlargement / Reduction Ratio	25% - 400% in 1% increments
Other Features	N-in-1, Poster Printing

COLOUR SCANNER

2 sided Scan	Fully automatic 2 sided scan from the ADF up to A3 paper size
Resolution	Optical: From Flatbed Up to 2,400 x 2,400dpi. From ADF 2,400 x 1,200dpi Interpolated: Up to 19,200 x 19,200dpi
Scan Speed	From 4 seconds Mono & Colour (A4 size, 100 x 100dpi)
Scan to	Email, OCR, Image, File, Card, USB Flash Memory Drive, FTP, Network**, Email Server**, Web Services
Scan Format	JPEG, BMP, PDF, TIFF, PNG (USB Flash Memory Drive supports PDF Mono & Colour, JPEG, TIFF)

PAPER HANDLING

Paper Input	250 sheet standard paper tray 250 sheet lower paper tray 1 Sheet A3 Manual Feed
Paper Output	35 sheet automatic document feeder (ADF)
Paper Handling Sizes	50 sheets
Media Type	Landscape: A4, LTR, EXE. Portrait: A3, LGR, LGL, Folio, A5, A6, Photo, Indexcard, Photo-L, Photo-2L, C5, Com-10, DL Envelope, Monarch Plain, Inkjet, Glossy, Transparency

* ISO/IEC 24734

**Optional free download available from <http://solutions.brother.com>

***Windows® only

****Approx. cartridge yield is declared in accordance with ISO/IEC 24711

*****ESAT ISO/IEC 24735

Apple iPad, iPhone, iPod, iPod touch, Mac and the Mac logo are trademarks of Apple Inc., registered in the U.S. and other countries. Picasa and Google Drive are trademarks of Google Inc. Use of these trademarks are subject to Google Permissions. FLICKR is a registered trademark of Yahoo! Inc.

DIRECT PHOTO PRINTING

USB Media Cards	PictBridge, USB Flash Memory Drive Memory Stick Duo/Pro Duo/Micro, Secure Digital (SD), Secure Digital High Capacity (SDHC), Secure Digital Extended Capacity (SDXC), Multimedia Card, Multimedia Card Plus, Multimedia Card Mobile
Direct Print Format	JPEG
Direct Scanning Format	JPEG, PDF (colour), TIFF, PDF (mono)

SOFTWARE

Driver Software Included	Brother MFL-Pro Suite
Software - Windows®	Brother ControlCentre4, Nuance® Paperport® 12 SE with OCR
Software - Macintosh	Brother ControlCentre2, NewSoft® Presto!® PageManager9
Supported Operating Systems	Windows® 7 (32bit(x86) & 64bit(x64) editions), Windows® 8 (32bit(x86) & 64bit(x64) editions), Windows Vista® (32bit(x86) & 64bit(x64) editions), Windows® XP Professional (32bit(x86) & 64bit(x64) editions), Windows® XP Home, Windows Server® 2003 & 2008 (32bit(x86) & 64bit(x64) editions), Windows Server® 2008 R2 & 2012 (64bit(x64) edition) Mac OS X 10.6.8, 10.7.x, 10.8.x

SUPPLIES

Standard Cartridges	Black: LC123BK - Approx 600**** A4 pages Cyan / Magenta / Yellow: LC123C/M/Y - Approx 600**** A4 pages
High Yield Cartridges	Black: LC129XL BK - Approx 2,400**** A4 pages Cyan / Magenta / Yellow: LC125XL C/M/Y - Approx 1,200**** A4 pages
Brother Paper	BP71GA3: A3 glossy photo paper, 20 sheets BP71GLA: A4 glossy photo paper, 20 sheets BP71GLP: 10x15 cm glossy photo paper, 20 / 50 sheets BP60MA: A4 Matte inkjet paper, 25 sheets BP60PA: A4 inkjet paper, 250 sheet



WEIGHTS & DIMENSIONS

With Carton	657(W) x 521(D) x 414(H) mm - 20.8Kg
Without Carton	553(W) x 433(D) x 310(H) mm - 16.7Kg

OTHERS

Power Consumption	Operating - 29W Ready Mode - 5.5W Sleep Mode - 1.5W Off - 0.04W
Sound Pressure Level (Operating)	50dB (A) (Maximum)



brother
at your side

Brother International Ireland (Corporation) Ltd,

Boeing Road, Airway's Ind Est, Santry, Dublin 17

Tel: +353 (1) 2411 900 Fax: +353 (1) 842 4666

Website: www.brother.ie

All specifications correct at time of printing. Brother is a registered trademark of Brother Industries Ltd. Brand product names are registered trademarks or trademarks of their respective companies.

Contact:

MFC-J6920DW

brother[®]
at your side



INTRODUCING THE MFC-J6920DW -
PRODUCTIVITY SOLUTIONS FOR
YOUR BUSINESS

WELCOME TO **PRINT 3.0**



INTRODUCING

THE MFC-J6920DW

PRODUCTIVITY SOLUTIONS FOR YOUR BUSINESS

The MFC-J6920DW is more than a printer. It's an intelligent, cloud connected device that will change the way you work. It can help your team work faster, smarter and more collaboratively by getting the right information to the right place at the right time. Welcome to a new age of printing

WELCOME TO **PRINT 3.0.**



Mobile

Agility is key in the modern business. Our range of mobile print and scan solutions will enable your workforce to print and scan whenever, wherever. Our mobile print and scan app works across a number of platforms including Apple, Microsoft and Android and the inclusion of NFC (near field communication) means you can print faster than ever by simply holding your device to the NFC sensor.



Work Smarter

The cloud connected MFC-J6920DW makes collaboration quick and easy. Scan directly to a number of cloud services such as Dropbox and Evernote™ and have paper based content digitised and available in seconds to share with your team in a variety of formats including .pdf, .pptx and .docx.



Get Noticed

Create the impact your business deserves with high quality 2-sided printing at up to A3 sizes. The MFC-J6920DW is also A3 scan ready so you can capture large prints and create copies of double paged A4 sized magazines quickly and easily.



Save Time

The MFC-J6920DW is packed with a range of productivity solutions to make your business more efficient. Super quick print and scan speeds combined with the 2-sided automatic document feeder help to digitise and share important information quickly and easily.



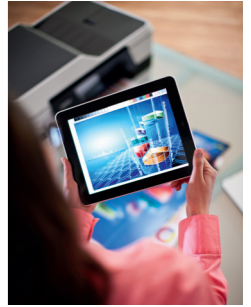
Reduced Costs

As well as utilising XL ink cartridges capable of printing up to 2400 black and 1200 colour prints, the MFC-J6920DW also includes a number of cost saving features such as 2-sided printing and Ink Save mode which can significantly reduce your ink consumption.



Key facts

- 22ipm mono and 20ipm colour print speeds
- 2-sided Print/Scan/Copy/Fax at up to A3 paper sizes
- 35 sheet Automatic Document Feeder
- 9.3cm touchscreen LCD
- Wi-Fi & Ethernet network as standard
- Mobile print & scan app
- 500 sheet paper capacity
- Optional 2400 page black and 1200 page colour XL ink cartridges



The Brother Advantage

Introducing Brother Apps & Solutions. The smarter way to manage your paper based content.

Scan to Office

An intelligent feature that allows you to scan a hard copy document, which is then converted into a Microsoft Office file with editable text and images.

Scan to Email

Scan a document direct to an email address from the touchscreen with ease.

Outline Copy

Allows you to circle the content you require in red and the device will copy and print just the selected area.

Outline Scan

Allows you to circle the content you require in red and the device will scan just the selected area for instant impact.