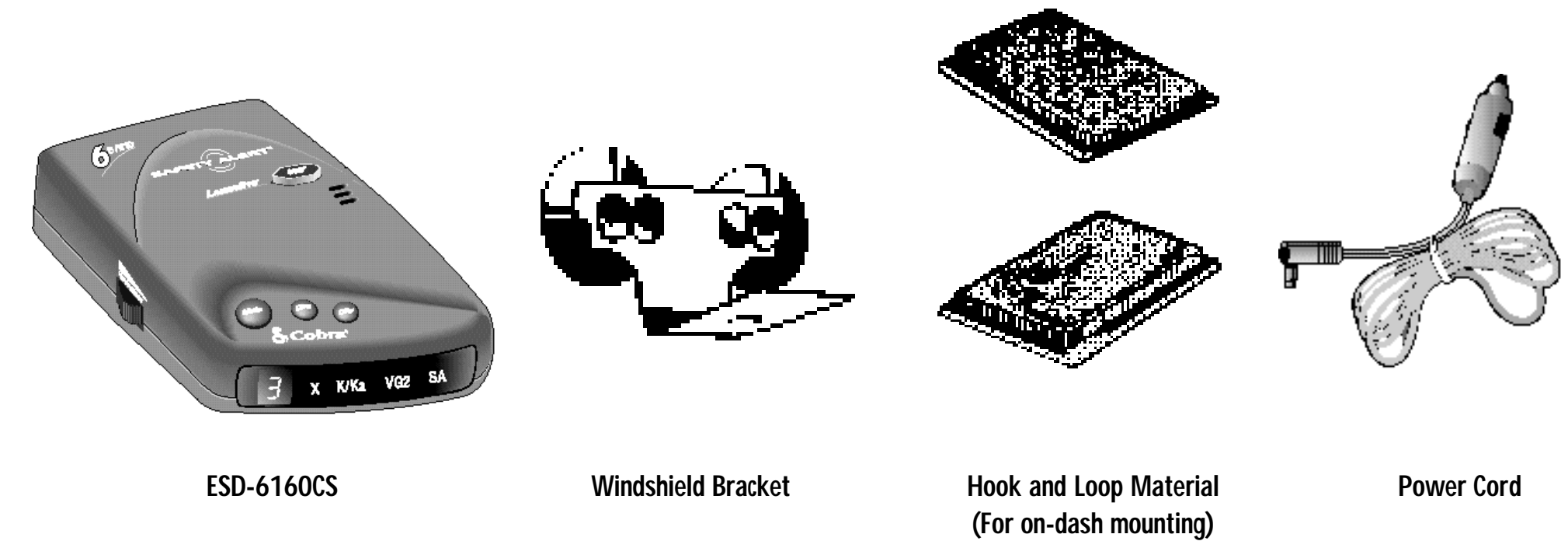


Installing and Using Your
Cobra
6 BAND™
 DETECTION SYSTEM
 Model ESD-6160CS

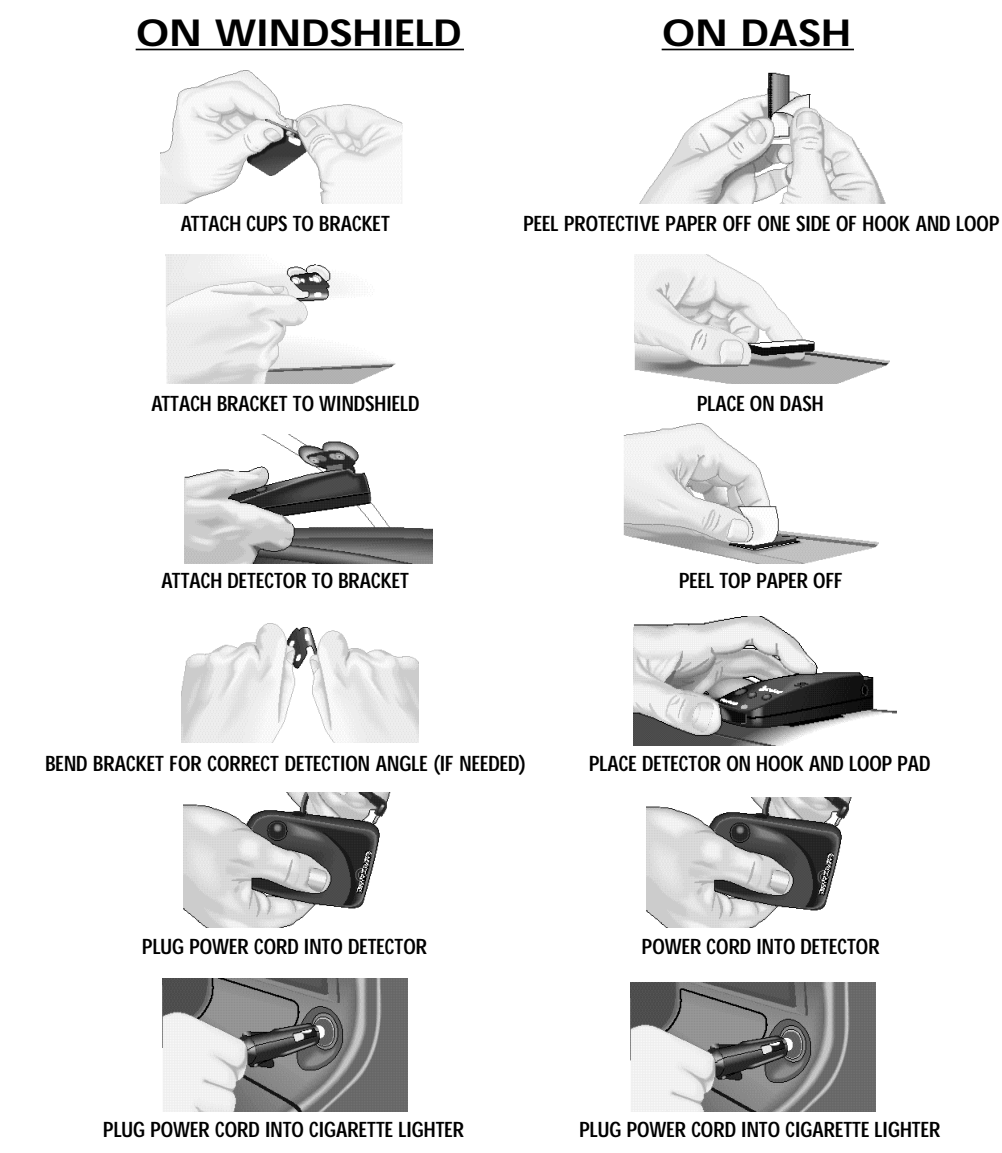


1. What You'll Need To Install The ESD-6160CS:

NOTE: Detailed instructions on opposite side



2. Installing The ESD-6160CS:



NEED HELP?

Customer Assistance

If you have any questions about operating or installing your new Cobra product, or if you are missing parts...

Please Call Cobra First!
DO NOT RETURN THIS PRODUCT TO THE STORE
 Call our Automated Help Desk at (773) 889-3087

24 hours a day, 7 days a week
 A Consumer Service Representative can be reached through this same number
8:00 a.m. - 8:00 p.m., CST Monday through Friday (except holidays)
 Technical assistance is also available on-line in the Frequently Asked Question (FAQ) section at www.cobraelec.com or by e-mail to productinfo@cobraelec.com

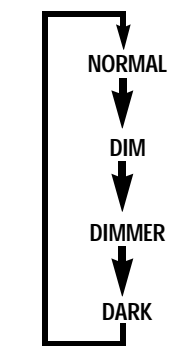
3. Operating The ESD-6160CS:

A. Turn On and Adjust Volume



The unit will chirp 3 times and the red single digit display will illuminate **h**.

B. Set Display Brightness



C. Set Highway/City Mode



CITY: For urban driving-reduces number of X-Band false audible alerts.

HIGHWAY: For all other driving.

D. Muting



Press to reduce volume of audible alert in progress.

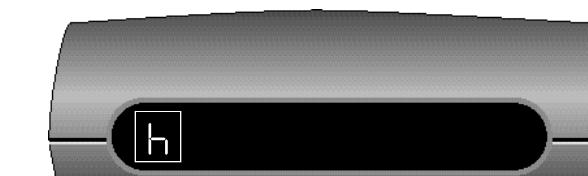
E. Laser Eye



360° Laser Detection

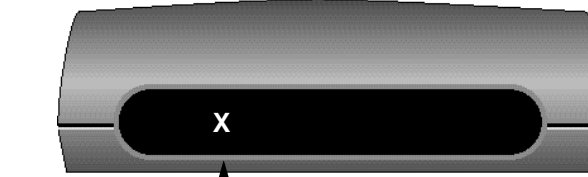
F. Indicators and Visual Alerts

Power



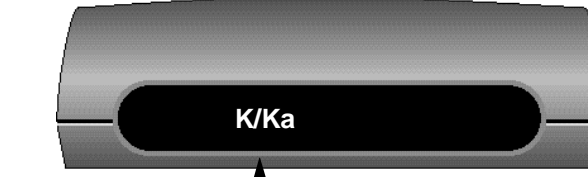
Either an **h** or **h** will illuminate when the unit is on.

X Band Radar



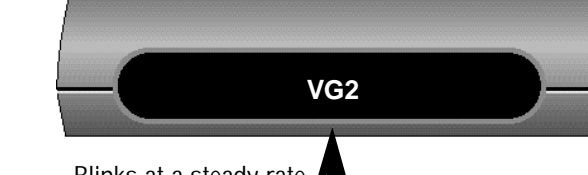
Blinks faster as source approaches

K and Ka Band Radar



Blinks faster as source approaches

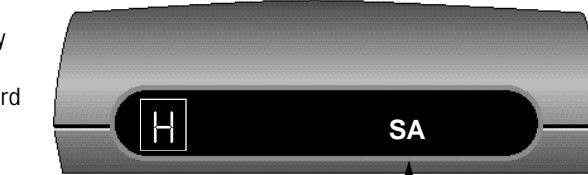
VG2



Blinks at a steady rate

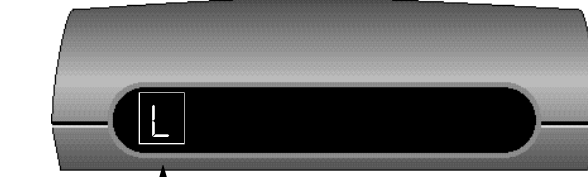
Safety Alert™ Traffic Warning System

- E** Emergency
- R** Road Hazard
- R** Railroad



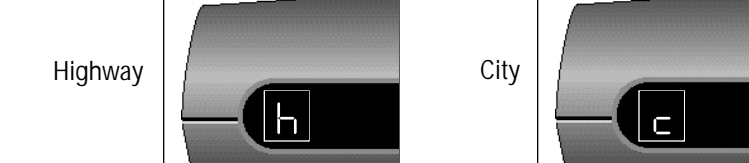
Both the red SA LED and the single digit display will illuminate for the Safety Alert signal.

Laser



Blinks at a steady rate

Highway/City Mode



Cobra
 Cobra Electronics Corporation
 6500 West Cortland Street,
 Chicago, Illinois 60707

