

S 0006



Manuale di Istruzione
Instruction Manual
Mode d'Emploi

 **BERETTA**

.le illustrazioni e descrizioni di questo opuscolo si intendono fornite a titolo indicativo. La Casa si riserva pertanto il diritto di apportare ai suoi modelli, in qualsiasi momento e senza preavviso, quelle modifiche che ritenesse utili per migliorarli o per qualsiasi esigenza di carattere costruttivo e commerciale.

The illustrations and descriptions given in this brochure are intended as a general guide only, and must not be taken as binding. The Company, therefore, reserves the right to make, at any moment and without notice, any changes it thinks necessary to improve its models or to meet any requirements of manufacturing or commercial nature.

.es illustrations et les descriptions contenues dans ce prospectus ne sont données qu'à titre indicatif. La Maison se réserve le droit de modifier, à tout moment et sans préavis, ses modèles pour les améliorer ou pour n'importe quelle exigence de caractère constructif et commercial.



ENGLISH

Illustrations on pages 3,12,13, 34

NOTICE: The Manufacturer and/or its Local Official Distributors assume no responsibility for product malfunction or for physical injury or property damage resulting in whole or in part from criminal or negligent use of the product, improper or careless handling, unauthorized modifications, use of defective, improper, hand-loaded, reloaded or remanufactured ammunition*, customer abuse or neglect of the product, or other influences beyond manufacturer's direct and immediate control.

* See paragraph "Ammunition".

WARNING: Always ensure that the safety is fully engaged until ready to fire. A safety which is not fully engaged will not prevent firearm discharge.

WARNING: ALL FIREARMS HAVE LETHAL POTENTIAL. READ THE BASIC SAFETY RULES CAREFULLY AND UNDERSTAND THEM FULLY BEFORE ATTEMPTING TO USE THIS FIREARM.

In addition to the Basic Safety Rules, there are other Safety Rules pertaining to the loading, unloading, disassembly, assembly and use of this firearm, located throughout this manual.

WARNING: READ THE ENTIRE MANUAL CAREFULLY BEFORE USING THIS FIREARM. MAKE SURE THAT ANY PERSON USING OR HAVING ACCESS TO THIS FIREARM READS AND UNDERSTANDS ALL OF THIS MANUAL PRIOR TO USE OR ACCESS.

CONTENTS

	Page
BASIC SAFETY RULES	6
DESCRIPTION	14
• STANDARD FEATURES	14
• SPECIAL FEATURES	17
• SPECIFICATIONS	19
• GENERAL OPERATION	20
LOADING AND FIRING	20
• LOADING THE MAGAZINE	21
• LOADING THE PISTOL AND THE FIRING CHAMBER	21
• FIRING	23
• UNLOADING THE PISTOL AND THE FIRING CHAMBER	25
• UNLOADING THE MAGAZINE	26
MAINTENANCE	26
• FIELD STRIPPING	26
• CLEANING AND LUBRICATING	27
• ASSEMBLY	28
TROUBLESHOOTING	30
AMMUNITION	31

BASIC SAFETY RULES

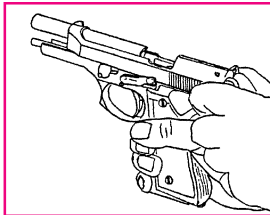
1. NEVER POINT A FIREARM AT SOMETHING THAT IS NOT SAFE TO SHOOT.

Never let the muzzle of a firearm point at any part of your body or at another person. This is especially important when loading or unloading the firearm. When you are shooting at a target, know what is behind it. Some bullets can travel over a mile. If you miss your target or if the bullet penetrates the target, it is your responsibility to ensure that the shot does not cause unintended injury or damage.

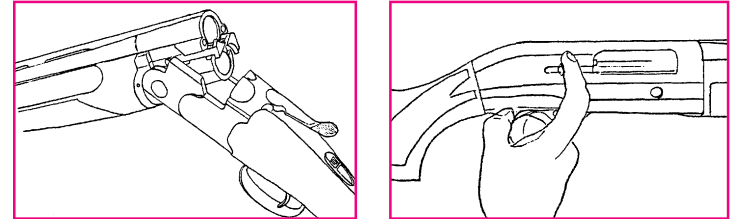


2. ALWAYS TREAT A FIREARM AS IF IT WERE LOADED.

Never assume that a firearm is unloaded. **The only certain way to ensure that a firearm is empty is to open the chamber and visually examine the inside to see if a round is present. Removing the magazine will not guarantee that a pistol is unloaded or cannot fire.** Shotguns and rifles can be checked by cycling or removing all rounds and by then opening the chamber so that a visual inspection of

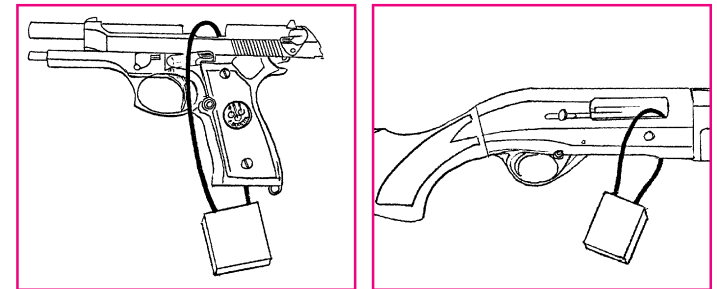


the chamber for any remaining rounds can be made.



3. STORE YOUR FIREARM SO THAT CHILDREN CANNOT GAIN ACCESS TO IT.

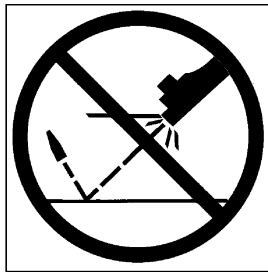
It is your responsibility to insure that children under the age of 18 or other unauthorized persons do not gain access to your firearm. **To reduce the risk of accidents involving children, unload your firearm, lock it and store the ammunition in a separate locked location.** Please note that devices intended



plugs, etc. - may not prevent use or misuse of your firearm by a determined person. Steel gun safes may be more appropriate to reduce the likelihood of intentional misuse of a firearm by an unauthorized child or person.

4. NEVER SHOOT AT WATER OR AT A HARD SURFACE.

Shooting at the surface of water or at a rock or other hard surface increases the chance of ricochets or fragmentation of the bullet or shot, which can result in the projectile striking an unintended or peripheral target.



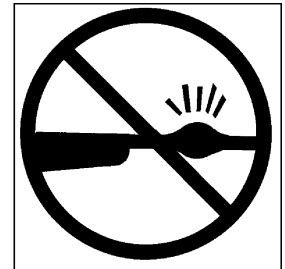
5. KNOW THE SAFETY FEATURES OF THE FIREARM YOU ARE USING, BUT REMEMBER: SAFETY DEVICES ARE NOT A SUBSTITUTE FOR SAFE HANDLING PROCEDURES.

Never rely solely on a safety device to prevent an accident. It is imperative that you know and use the safety features of the particular firearm you are handling, but accidents can best be prevented by following the safe handling procedures described in these safety rules and elsewhere in the product manual. To further familiarize yourself with the proper use of this or other firearms, take a Firearms Safety Course taught by an expert in firearms use and safety procedures.

6. PROPERLY MAINTAIN YOUR FIREARM.

Store and carry your firearm so that dirt or lint does not accumulate in the working parts. Clean and oil your firearm, following the instructions provided in this manual, after each use to prevent corrosion, damage to the barrel or accumulation of impurities which can prevent use of the gun in an emergency. Always check the barrel prior to loading to ensure that it is clean and free from obstructions. **Firing against an obstruction can rupture the barrel and injure yourself or others nearby.**

In case you hear an unusual noise when shooting, stop firing immediately, engage the manual safety and unload the firearm. Make sure the chamber is free from any obstruction or possible bullet blocked inside the barrel due to defective or improper ammunition.



7. USE PROPER AMMUNITION.

Only use factory-loaded, new ammunition manufactured to industry specifications: CIP (Europe and elsewhere), SAAMI (U.S.A.). Be certain that each round you use is in the proper caliber or gauge and type for the particular firearm. The caliber or gauge of the firearm is clearly marked on the barrels of shotguns and on the slide or barrel of pistols. The use of reloaded or remanufactured ammunition can increase the likelihood of excessive cartridge pressures, casehead ruptures or other defects in the ammunition which can cause damage to your firearm and injury to yourself or others nearby.

8. ALWAYS WEAR PROTECTIVE GLASSES AND EARPLUGS WHEN SHOOTING.

The chance that gas, gunpowder or metal fragments will blow back and injure a shooter who is firing a gun is rare, but the injury that can be sustained in such circumstances is severe, including the possible loss of eyesight. A shooter must always wear impact resistant shooting glasses when firing any firearm. Earplugs help reduce the chance of hearing damage from shooting.



9. NEVER CLIMB A TREE, FENCE OR OBSTRUCTION WITH A LOADED FIREARM.

Open and empty the chamber of your firearm before climbing or descending a tree or before climbing a fence or jumping over a ditch or obstruction. Never pull or push a loaded firearm toward yourself or another person.



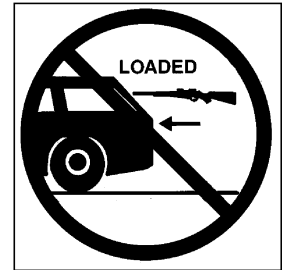
10. AVOID ALCOHOLIC BEVERAGES OR JUDGMENT OR REFLEX IMPAIRING MEDICATION WHEN SHOOTING.

Do not drink and shoot. If you take medication that can impair motor reactions or judgment, do not handle a firearm while you are under the influence of the medication.



11. NEVER TRANSPORT A LOADED FIREARM.

Unload a firearm before putting it in a vehicle. Hunters and target shooters should load their firearm only at their destination. If you carry a firearm for self-protection, leaving the chamber unloaded can reduce the chance of accidental discharge.



12. LEAD WARNING.

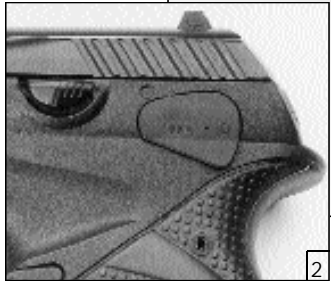
Discharging firearms in poorly ventilated areas, cleaning firearms or handling ammunition may result in exposure to lead and other substances known to cause birth defects, reproductive harm, and other serious physical injury. Have adequate ventilation at all times. Wash hands thoroughly after exposure.

TYPE F



1

TYPE D



2

12

TYPE F



3

TYPE F



4

5

6

13

DESCRIPTION

Beretta 9000 S semi-automatic pistols, available in different calibers, employ a tilt barrel locking system. The compact dimensions and the light weight make the Beretta 9000 S pistols easy to conceal and operate.

The frame is manufactured with a fiberglass reinforced technopolymer incorporating two special steel alloy rail inserts that guarantee perfect slide-to-frame fit and the optimal tilt barrel movement during the locking and unlocking phases.

The innovative and patented tilt-barrel locking system is based on a direct, barrel-to-slide, engagement that does not require any intermediate components and maintains the same high degree of reliability found on Beretta's traditional open slide design.

The lock-up of the barrel is obtained by its two locking lugs engaging the slide. This system has allowed Beretta to maintain its distinctive and classic "open-barrel" slide design.

STANDARD FEATURES

All current Beretta Model 9000 S pistols have the following important features:

SAFETY FEATURES

NOTICE: The figure numbers noted below refer to the photographs on pages 3, 12, 13 and 34.

Automatic Firing Pin Block (Fig. 1-A). Model 9000 S pistols feature a blocking device that prevents forward movement of the firing pin unless the trigger is pulled. This feature is intended to prevent discharge if the pistol is dropped or if the hammer is unintentionally dropped without pulling the trigger.

Inertial Firing Pin. Model 9000 S pistols have an internal spring which holds the firing pin rearward until the force of the spring is overcome by the force of hammer fall. This feature is intended to reduce the possibility of discharge of the pistol if it is dropped.

Loaded Chamber Indicator (Fig. 3-B). The loaded chamber indicator is a small red tab (extractor) that protrudes from the slide when a round is in the chamber. The tab is located on the right side of the pistol's slide, near the chamber, and can be both seen and felt, allowing the user to check the chamber at night by feel or during the day by checking for the increased protrusion of the red tab. **Please note: The most certain way to check whether a pistol is loaded is to pull back on the slide and visually inspect the chamber for a round.**

Loaded chamber indicators are designed primarily to allow noiseless inspection of the pistol to ensure that it is loaded in situations when it may be dangerous to operate the slide (the action of pulling back on the slide may make noise and will temporarily render the pistol inoperable) or when it is dark.

Slide Catch (Fig. 1-C). The slide catch is a lever that holds the slide open and rearward after the last round is fired. This allows the user to immediately determine that the pistol does not have a round in the chamber or in the magazine.

External Hammer (Fig. 3-D). The external hammer allows the user to visually and immediately determine that the hammer is cocked, half-cocked or lowered. **Please note: Type D pistols have a double-action-only mechanism that always maintains the hammer lowered.**

Half-cock Notch (on hammer) (Fig. 5). The hammer features a half-cock notch that will catch on the sear, before striking the firing pin, should the hammer be released inadvertently by violently striking or dropping the pistol.

OPERATIONAL FEATURES

Semi-automatic Firing. Model 9000 S pistols will automatically reload after each round is fired, as long as there are cartridges in the pistol.

Removable, High Capacity Magazine (Fig. 1). Model 9000 S pistols have a quickly removable, high capacity magazine which allows rapid reloading and extended use in emergency situations. The type and capacity of magazine for current Model 9000 S pistols is as follows:
Model 9000 S cal. 9mm x 19 (9 mm Parabellum) and cal. 9 mm x 21 IMI – 12*- round, staggered magazine.
Model 9000 S cal. .40 S&W – 10-round, staggered magazine.

** Commercial 9000 S pistols sold in the US market are supplied with 10-round magazines in accordance with US Federal Guidelines for Commercial Sales.*

Double Action (Fig. 1-E). Also considered a safety feature during emergency use of a pistol, the double action trigger pull both cocks and drops the hammer in the same motion. This allows immediate firing of the weapon without requiring that the hammer be independently manipulated. Double action trigger pull is considered a safety feature because it allows the user to attempt to re-fire a non-firing cartridge simply by pulling the trigger a second time, rather than having to unload the non-firing round before the pistol can be used again. The length of trigger pull also helps reduce the likelihood of unintentional discharge.

Simple Field Stripping and Cleaning (Fig. 1-F and 3-F). A pistol which can be easily field stripped can be more readily cleaned (see TROUBLESHOOTING section in this manual). Simple cleaning makes it easier for the user to properly maintain the pistol, which helps ensure continued reliability (see MAINTENANCE section in this manual).

Ergonomic Grip Frame (Fig. 3-G). The newly designed grip frame, made of softer materials, better accommodates and protects the hand, facilitating, at the same time, the correct grip of the pistol also under conditions of rapid fire. It also guarantees a firm hold even with wet hands.

Special Sights (Fig. 3-H). Front and rear sights are designed for swift target acquisition. To aid sighting under low light conditions, the sights are equipped with white dots. Both sights are removable and replaceable.

SPECIAL FEATURES

Model 9000 S pistols have special features unique to the particular sub-model which are designed to meet the particular needs of the customer. **Read carefully the special features for the particular model of Beretta pistol you are using. Some of these features include important safety information.**

TYPE F MODELS

Manual Safety (Fig. 1-I and 2-I). Model 9000 S - Type F pistols feature an ambidextrous manual safety lever. When the manual safety is engaged, the linkage between trigger and sear is disconnected and the rotation of the sear is prevented. Engage the safety by pushing the safety lever up, into the ON position (Red Warning Dot Covered) (Fig. 5-6). The manual safety can be engaged only when the hammer is in cock or half-cock position. See also following paragraph.

Manual Safety-Decocking Lever (Fig. 1-I and 3-I). When the safety lever is moved all the way upward, past the safety position, it allows safe hammer lowering. The hammer will drop to the half-cock position and the safety lever will return to the safety position (Red Warning Dot Covered) (Fig. 5). This lever allows the user to decock the hammer without requiring trigger pull or lowering of the hammer by hand. **A user who decocks a pistol by pulling the trigger or who lowers a hammer by hand might discharge a round in the chamber. Use of the safety/decock lever is recommended in place of**

trigger pull/manual hammer lowering, which bypasses the automatic firing pin block and thus increases the chances of unintentional discharge. By disengaging the manual safety (pushing the safety lever completely downward - Red Warning Dot Visible) it is possible to fire in double action.

Double/Single Action (Fig. 1-E). Model 9000 S - Type F pistols fire double action on the first round and single action on subsequent rounds. The longer, heavier trigger pull of the double action makes inadvertent discharge less likely, while the lighter, shorter single action trigger pull allows faster, more accurate discharge of subsequent rounds. **NOTE: The first round of a Type F model pistol may be fired using the lighter, shorter single action trigger pull if the hammer is manually cocked prior to pulling the trigger. Read instructions concerning Firing found in this manual.**

TYPE D MODELS

Double Action Only (Fig. 2). Model 9000 S - Type D pistols fire with longer, heavier double action trigger pull on every pull of the trigger. This feature reduces the likelihood of inadvertent discharge on subsequent shots.

No Safety/Decock Lever (Fig. 2). Type D models do not have an external safety lever or an external decocking lever. The hammer spur has been removed and is flush with the rear of the slide. Type D models are designed for users who want to be able to fire their pistol immediately, without disengaging a safety lever.

SPECIFICATIONS		
Operation:	semi-automatic, short recoil of barrel.	
Locking System:	locked-breech with tilt barrel.	
Action:	double and single action. Type D models: double action only.	
Hammer:	exposed. Type D models: without spur.	
Rifling Pitch:	R.H., 6 grooves. Pitch: 9 mm x 19 (9 mm Parabellum) and 9 mm x 21IMI: 250 mm (9.84 in), .40 S&W: 400 mm (15.7 in).	
Sights	front and rear sights dovetailed to slide.	
Safeties:	all models: automatic firing pin blocking device. Type F models: manual safety-decocking lever. Type D models: without manual safety.	
Frame:	techno-polymer with rubber overmolding.	
Slide:	steel, sand-blasted, phosphatized and Bruniton® coated.	
Barrel:	steel, sand-blasted and blued. Chrome plated bore and chamber.	
Caliber	9 mm x 19 / 9 mm x 21IMI	.40 S&W
Overall length (mm/in)	168/6.61	168/6.61
Barrel length (mm/in)	88/3.46	88/3.46
Sight radius (mm/in)	132/5.20	132/5.20
Overall height (mm/in)	122/4.80	122/4.80
Overall width with safety lever (mm/in)	42/1.65	42/1.65
Overall width without safety lever (mm/in)	31/1.22	31/1.22
Magazine capacity (rounds)	12*	10
Weight unloaded (gr/oz - approx.)	Type F models 760/26.8	780/27.5
	Type D models 730/25.7	760/26.8

* Commercial 9000 S pistols sold in the US market are supplied with 10-round magazines in accordance with US Federal Guidelines for Commercial Sales.

GENERAL OPERATION

Beretta's 9000 S semi-automatic pistols use a short recoil locked-breech system with tilt barrel. When the pistol is fired, the recoil energy pushes the slide-barrel assembly backward. After a short run of barrel-slide assembly, the barrel engages the front block and clears the locking recesses on the slide. The slide continues its rearward travel extracting and ejecting the fired cartridge case, rotating the hammer and activating the two recoil springs.

Pushed by the recoil springs, the slide then moves forward, feeding the next cartridge from the magazine into the chamber, and engaging the barrel. The slide is designed to stay open after the last cartridge has been fired and the spent shell casing has been ejected.

LOADING AND FIRING

WARNING: A pistol can have a live round in the chamber and can fire even if the magazine is empty or has been removed.

WARNING: Before loading the firearm it is recommended that you become familiar with the following loading procedures without the use of ammunition. Never handle a loaded firearm until you are fully familiar with the loading procedures. Before loading a pistol, always engage the manual safety. Always point the firearm in a safe direction. (See points 1, 2 and 4 of the BASIC SAFETY RULES).

WARNING: Always keep your finger away from the trigger whenever you do not intend to fire. Make sure the pistol is not already loaded. Remove the magazine from the pistol by depressing the magazine release button (Fig. 7). Keeping your finger away from the trigger, grasp the slide serrations with thumb and index fingers and retract the slide 2 centimeters (approx. one inch) to verify that the chamber is empty (Fig. 8). Lower the hammer by rotating upward the manual safety-decocking lever (if present), past the safety position (Fig. 9). The safety lever will stop in the safety position with the hammer in half-cock position (Fig. 5).

LOADING THE MAGAZINE

- To load the magazine, remove it from the pistol by depressing the magazine release button (Fig. 7).
- Hold the magazine in the left hand. With your right hand place a cartridge on the follower in front of the lips, press down and slide the cartridge completely back under the lips (Fig. 10).
- Repeat until the magazine is fully loaded. Holes on the back of the magazine allow for visual counting of cartridges (Fig. 1).

CAUTION: Do not try to force more than the maximum number of rounds indicated for your particular pistol into the magazine. An overloaded magazine may not function properly.

LOADING THE PISTOL AND THE FIRING CHAMBER

WARNING: Always keep your finger away from the trigger whenever you do not intend to fire. Engage the manual safety, if present, by pushing the safety lever up, so as to cover the Red Warning Dot (Fig. 11). Put the hammer in the half-cock position to engage manual safety (Fig. 5).

CAUTION: Type D pistols do not have an external safety lever and their hammer never stays cocked, following the slide forward to come to rest in the uncocked position. The Type D pistol is ready to fire as soon as the chamber is loaded.

The firing chamber of the pistol is the portion of the barrel into which the cartridge is fed. The firing chamber may be loaded in one of three ways:

1. LOADING FROM MAGAZINE

- Push the loaded magazine into the pistol grip completely to insure catch engagement.
- Grasping the slide serrations with thumb and index finger, fully retract and release the slide to load the chamber (Fig. 12).

WARNING: THE PISTOL IS NOW CHAMBER LOADED, COCKED AND READY TO FIRE. Always keep your finger away from the trigger whenever you do not intend to fire. If you are not ready to fire, rotate the manual safety lever with a fully upward thumb pressure to lower the hammer (Fig. 9).

2. DIRECT CHAMBER LOADING

- Pull open the slide. The slide remains open when an empty magazine is inserted or the slide catch is pressed upwards.
- Insert a round into the chamber.
- Press the slide catch to close the slide.

WARNING: THE PISTOL IS NOW CHAMBER LOADED, COCKED AND READY TO FIRE. If you are not ready to fire, rotate the manual safety lever with a fully upward thumb pressure to lower the hammer (Fig. 9).

3. A PISTOL WHICH IS LOADED AND FIRED WILL AUTOMATICALLY PICK UP THE NEXT ROUND AND FEED IT INTO THE FIRING CHAMBER AS LONG AS THERE IS AMMUNITION IN THE MAGAZINE.

NOTICE: The manufacturer assumes no responsibility for any injury or property damage resulting from improper or careless handling, intentional or accidental discharge of the firearm.

NOTICE: Beretta 9000 S pistols described in this manual are equipped with an automatic safety, which prevents firing pin inertia breech protrusion. This safety is overcome only by trigger pull (Fig. 13).

If you want to replace the round which has been chambered from the magazine:

- Remove the magazine from the pistol by depressing the magazine release button.
- Insert one more cartridge into the magazine.
- Completely push the loaded magazine into the pistol grip to insure catch engagement.

WARNING: REMEMBER THAT YOU ARE HANDLING A LOADED FIREARM, WITH A LIVE ROUND IN THE CHAMBER. Keep your finger away from the trigger whenever you do not intend to fire.

FIRING

WARNING: Only point a firearm at something safe to shoot. Never put your finger on the trigger unless you intend to shoot. Never disengage the safety on a firearm unless you intend to shoot.

CAUTION: Always wear protective glasses and earplugs when shooting (see point 8 of the BASIC SAFETY RULES).

WHEN READY TO FIRE:

- Aim the pistol and align front and rear sight on target.
- Release the manual safety (if present) by simply pushing the manual safety lever down all the way. **The Red Warning Dot, which is exposed when the safety lever is rotated completely downward, indicates that the safety is off.**

WARNING: THE PISTOL IS NOW READY TO FIRE.

CAUTION: Type D pistols do not have an external safety lever and their hammer never stays cocked, following the slide forward to come to rest in the uncocked position. The Type D pistol is ready to fire as soon as the chamber is loaded.

NOTICE: If the hammer is cocked, the pull on the trigger simply releases the hammer. This firing mode is called SINGLE ACTION. After the first shot the pistol will always fire in the single action mode.

NOTICE: If the hammer is uncocked or in half-cock position, the pull on the trigger will first cock the hammer and release it. This firing mode is called DOUBLE ACTION.

NOTICE: Type D pistols are designed to fire in the double action mode only. The hammer never stays cocked, following the slide forward to come to rest in the uncocked position. Do not manually pull the hammer to the rear and release, doing so will damage the firing pin and firing pin block mechanism.

- Fire by squeezing the trigger.

The discharge generates the semi-automatic working cycle as described in the GENERAL OPERATION chapter.

WARNING: THE PISTOL IS CHAMBER LOADED, COCKED AND READY TO FIRE AGAIN. Keep your finger away from the trigger whenever you do not intend to fire and engage the manual safety, if present.

To carry the pistol with the firing chamber loaded and the hammer decocked, move the manual safety all the way upward, past the safety position (Fig. 9).

To fire, disengage the safety. The pistol will fire the first shot in double action.

- When the last round has been fired the slide remains open (Fig. 14).
- To fire again, remove the empty magazine and insert a loaded one.
- Press the slide catch to close the slide and to load the chamber (Fig. 15).

WARNING: THE PISTOL IS CHAMBER LOADED, COCKED AND READY TO FIRE AGAIN. Keep your finger away from the trigger whenever you do not intend to fire. Engage the manual safety, if present, and/or lower the hammer by rotating the manual safety-decocking lever upwards.

UNLOADING THE PISTOL AND THE FIRING CHAMBER

- Engage the manual safety, if present.
- Lower the hammer, if cocked, by rotating the manual safety-decocking lever upwards.
- Depress the magazine release button to remove the magazine from the pistol.
- Grasping the slide serrations with thumb and index finger, fully retract the slide to remove the chambered cartridge.

WARNING: Always visually inspect the firing chamber to ensure that it is empty. The chamber is empty when no cartridge is visible when looking into the open chamber (Fig. 8).

- When sure that the chamber is empty and the cartridge has been ejected, release the slide.

WARNING: Releasing the fully retracted slide when a loaded magazine is in the pistol will feed a cartridge into the pistol's firing chamber. The pistol can then be fired.

- To increase the service life of the hammer spring, it is advisable to lower the hammer when the pistol is not in use.

UNLOADING THE MAGAZINE

- To unload the magazine, grasp it with one hand around the magazine box, bottom down and front end forward. With the tip of the thumb firmly press down on the cartridge rim and push towards the front of magazine box. As the cartridge moves forward, tip it slightly upward with the index finger.
- Repeat until the magazine is unloaded.

MAINTENANCE

Every day the pistol is fired or at least once a month, cleaning and lubricating is recommended.

FIELD STRIPPING

WARNING: Make sure the pistol is unloaded. If not, unload it following the "UNLOADING THE PISTOL" procedure.

NOTICE: It is advisable to carry out the field stripping and the assembly operations over a table to catch components should they drop.

- Remove the magazine by depressing the magazine release button.
- Hold the pistol in the right hand and with the index finger press the disassembly latch which protrudes from the right side of the pistol (Fig. 16). Simultaneously, with the thumb and the index finger of the other hand, rotate the disassembly latch approx. 90° downward to disengage the slide-barrel assembly with recoil springs (Fig. 17).
- Pull the slide-barrel assembly with recoil springs forwards (Fig. 18).
- Pull out the recoil springs (Fig. 19) and take out the barrel from the slide (Fig. 20).

CAUTION: No further disassembly is recommended unless done by a competent gunsmith.

CLEANING AND LUBRICATING

CAUTION: Do not use metal or plastic tools. Do not use acids, water and solvents containing chlorine.

WARNING: Excess oil and grease obstructing the bore, even partially, is very dangerous when firing and may cause barrel rupture and serious injury to the shooter and bystanders. Never spray or apply oil to the cartridges. Use lubricants properly. You are responsible for the proper care and maintenance of your firearm.

MAGAZINE

- Make sure the magazine is thoroughly clean and the follower slides easily downward if pressed.
- If necessary, lightly oil with Beretta oil or a good grade gun oil the internal walls of the magazine box.
- Run a dry patch through the box. Do not leave lubricant inside the magazine box.

BARREL

- Spray the supplied brush with Beretta oil or a good grade gun oil. Insert the brush into the barrel from the chamber and scrub the chamber and bore thoroughly. If necessary, first clean the bore with a gun solvent.
- Dry the chamber and bore by pushing a cotton patch through the chamber and bore with the brush. Keep changing the patch until it emerges clean.

RECOIL SPRINGS AND SPRING GUIDE

- Lightly oil the recoil springs and spring guide with Beretta oil or a good grade gun oil. After long use it could be necessary to first clean these parts using the supplied brush.

SLIDE

- Clean the slide with a patch and Beretta oil or a good grade gun oil, paying special attention to the breech face, extractor and to the slide rails. If necessary, use the supplied brush. Dry the parts carefully with a clean patch.
- Lightly lubricate the slide.

FRAME

- Clean the frame with a soft patch.
- Lightly lubricate slide rails.

CAUTION: Do not use metal or plastic tools. Do not use acids, water and solvents containing chlorine.

CAUTION: Do not apply excess oil. Accumulation of oil attracts dirt and dust, which can interfere with the functioning and reliability of the gun.

ASSEMBLY

Assemble, following the Field Stripping procedure in reverse order, the slide-barrel assembly with recoil springs.

Make sure that the disassembly latch lever is rotated 90° (clockwise) downward in comparison with its rest position (Fig. 21 and 22) and verify that the firing pin catch lever is positioned downward (See arrow on Fig. 23).

CAUTION: If the firing pin catch lever is not positioned downward, the slide-barrel assembly cannot be reassembled.

Reinsert the slide-barrel assembly with recoil springs in the frame guides (Fig. 24) and fully retract the slide to its rearward stop. Then release it and make sure that the disassembly latch lever automatically returns to its locked position. If not, repeat the procedure and retract the slide and/or assist the disassembly latch lever to return to its locked/rest position.

WARNING: Store your firearm so that children cannot gain access to it. To reduce the risk of accidents involving children, unload your firearm, lock it and store the ammunition in a separate locked location. (See point 3 of the BASIC SAFETY RULES).

TROUBLESHOOTING

MALFUNCTION	PROBABLE CAUSE	REMEDY
Mis-introduction of a cartridge into the chamber	Defective cartridge	Inspect and replace cartridge
Mis-fire	Defective cartridge	Pull the trigger once more or replace cartridge
Mis-extraction or defective extraction	Dirty cartridge chamber	Clean and lubricate cartridge chamber
	Defective or dirty ammunition	Replace or clean cartridges
	Dirt under the extractor	Clean the extractor housing

NOTICE: Wholesalers, dealers or gunsmiths (unless they are a Repair Station authorized by the Manufacturer and/or by its Local Official Distributors) are not authorized to make any Warranty repair or adjustment on behalf of the Manufacturer.

AMMUNITION

Using good quality ammunition combined with preventive maintenance will make the pistol perform flawlessly through years of service. To prevent malfunctioning always visually inspect each cartridge for external damage before loading.

Beretta 9000 S pistols are designed and tested to withstand continued shooting with all brands and types of commercial ammunition manufactured to standard (C.I.P., S.A.A.M.I., etc.) specifications.

We do not recommend extended use of +P, +P+ or sub-machine gun ammunition because the chamber pressure may reach or exceed proof load pressure decreasing the major components service life expectancy.

The Warranty does not cover the use of reloaded and/or hand loaded ammunition.

CAUTION:

- Make sure the bullets are of the right caliber size for your pistol according to the international specifications (C.I.P., S.A.A.M.I., etc.).
- Lead bullets have a tendency to cause bore leading, which may dramatically increase the discharge pressure.
- Make sure to remove all chamber and bore lead accumulation after each use.
- DO NOT ever shoot cartridges with jacketed bullets through a barrel previously fired with lead bullets before the bore is thoroughly delead.

DRY FIRING/"DUMMY" ROUNDS

CAUTION: If you want to practice shooting your pistol without using live ammunition (called "dry firing"), insert an appropriate "snap cap" into the chamber to cushion the fall of the firing pin and reduce the chance of firing pin breakage. "Snap cap" cartridges with spring loaded "primers" are ideal. "DUMMY" cartridges with empty primer pockets are good for loading/unloading practice but DO NOT protect the firing pin during dry firing.

NOTES:



 BERETTA

Fabbrica d'Armi Pietro Beretta S.p.A.
Via Pietro Beretta, 18 - 25063 GARDONE VAL TROMPIA (Brescia) Italia
Tel. (030) 8341.1 - Telex 301523 PB BS I - Telefax (030) 8341.421
Internet: <http://www.beretta.it>