



Lexmark™

MB2650, MX622, & XM3250 MFPs

7018-67x

Service Manual

- [Start diagnostics](#)
- [Maintenance](#)
- [Safety and notices](#)
- [Trademarks](#)
- [Index](#)

September 14, 2018

www.lexmark.com

Product information

Product name:

Lexmaek MB2650; Lexmark MX622ade, MX622adhe, MX622adthe; Lexmark XM3250 MFPs

Machine type:

7018

Model(s):

676, 678, 679

Edition notice

September 14, 2018

The following paragraph does not apply to any country where such provisions are inconsistent with local law: LEXMARK INTERNATIONAL, INC., PROVIDES THIS PUBLICATION "AS IS" WITHOUT WARRANTY OF ANY KIND, EITHER EXPRESS OR IMPLIED, INCLUDING, BUT NOT LIMITED TO, THE IMPLIED WARRANTIES OF MERCHANTABILITY OR FITNESS FOR A PARTICULAR PURPOSE. Some states do not allow disclaimer of express or implied warranties in certain transactions; therefore, this statement may not apply to you.

This publication could include technical inaccuracies or typographical errors. Changes are periodically made to the information herein; these changes will be incorporated in later editions. Improvements or changes in the products or the programs described may be made at any time.

References in this publication to products, programs, or services do not imply that the manufacturer intends to make these available in all countries in which it operates. Any reference to a product, program, or service is not intended to state or imply that only that product, program, or service may be used. Any functionally equivalent product, program, or service that does not infringe any existing intellectual property right may be used instead. Evaluation and verification of operation in conjunction with other products, programs, or services, except those expressly designated by the manufacturer, are the user's responsibility.

Trademarks

Lexmark and the Lexmark logo are trademarks of Lexmark International, Inc., registered in the United States and/or other countries. PCL® is a registered trademark of the Hewlett-Packard Company. PCL is Hewlett-Packard Company's designation of a set of printer commands (language) and functions included in its printer products. This printer is intended to be compatible with the PCL language. This means the printer recognizes PCL commands used in various application programs, and that the printer emulates the functions corresponding to the commands.

PostScript is a registered trademark of Adobe Systems Incorporated in the United States and/or other countries.

All other trademarks are the property of their respective owners.

© 2018 Lexmark International, Inc.

All rights reserved.

P/N

General information

Printer model configurations

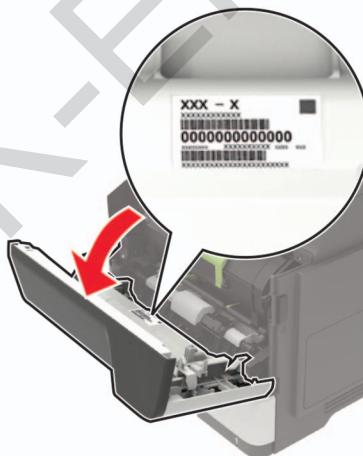
The Lexmark™ MX622ade, MX622adhe, MB2650ade, and XM3250 printers are network-capable, multifunction laser printers. The printers support monochrome printing and are embedded with home screen solutions and applications. All information in this service manual pertains to all models unless explicitly noted.

The printers are available in the following models:

Model	Configurations	Machine type / model
MX622ade	Monochrome laser 4-in-1 MFP with 7.0" color touch screen and fax	7018-676
MX622adhe	Monochrome laser 4-in-1 MFP with 7.0" color touch screen, fax, and hard drive	7018-678
MB2650ade	Monochrome laser 4-in-1 MFP with 7.0" color touch screen and fax	7018-676
XM3250	Monochrome laser 4-in-1 MFP with 7.0" color touch screen, fax, and hard drive	7018-679

Finding the serial number

Open door A, and then find the serial number at the right side of the printer.



Parts catalog

Legend

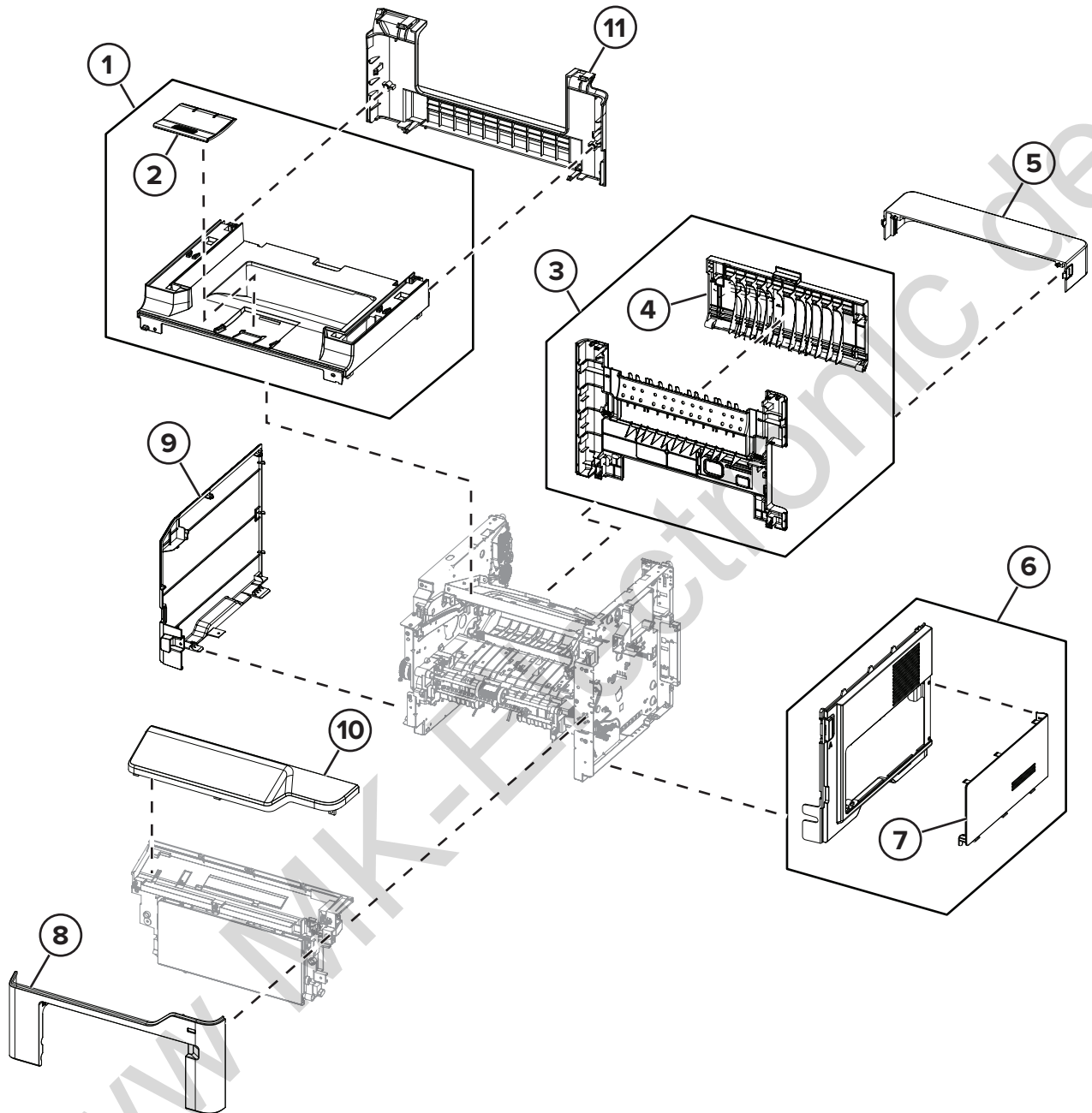
The following column headings are used in the parts catalog:

- **ASM-index**—Identifies the assembly and the item in the diagram. For example, 3-1 indicates Assembly 3 and item 1 in the table.
- **Part number**—Identifies the unique number that correlates with the part.
- **Units/mach**—Refers to the number of units actually used in the base machine or product.
- **Units/option**—Refers to the number of units in a particular option.
- **Units/FRU**—Refers to the number of units in a particular FRU.
- **Description**—A brief description of the part.

The following abbreviations are used in the parts catalog:

- **NS** (not shown) in the Asm-index column indicates that the part is procurable but is not pictured in the illustration.
- **PP** (parts packet) in the Description column indicates that the part is contained in a parts packet.

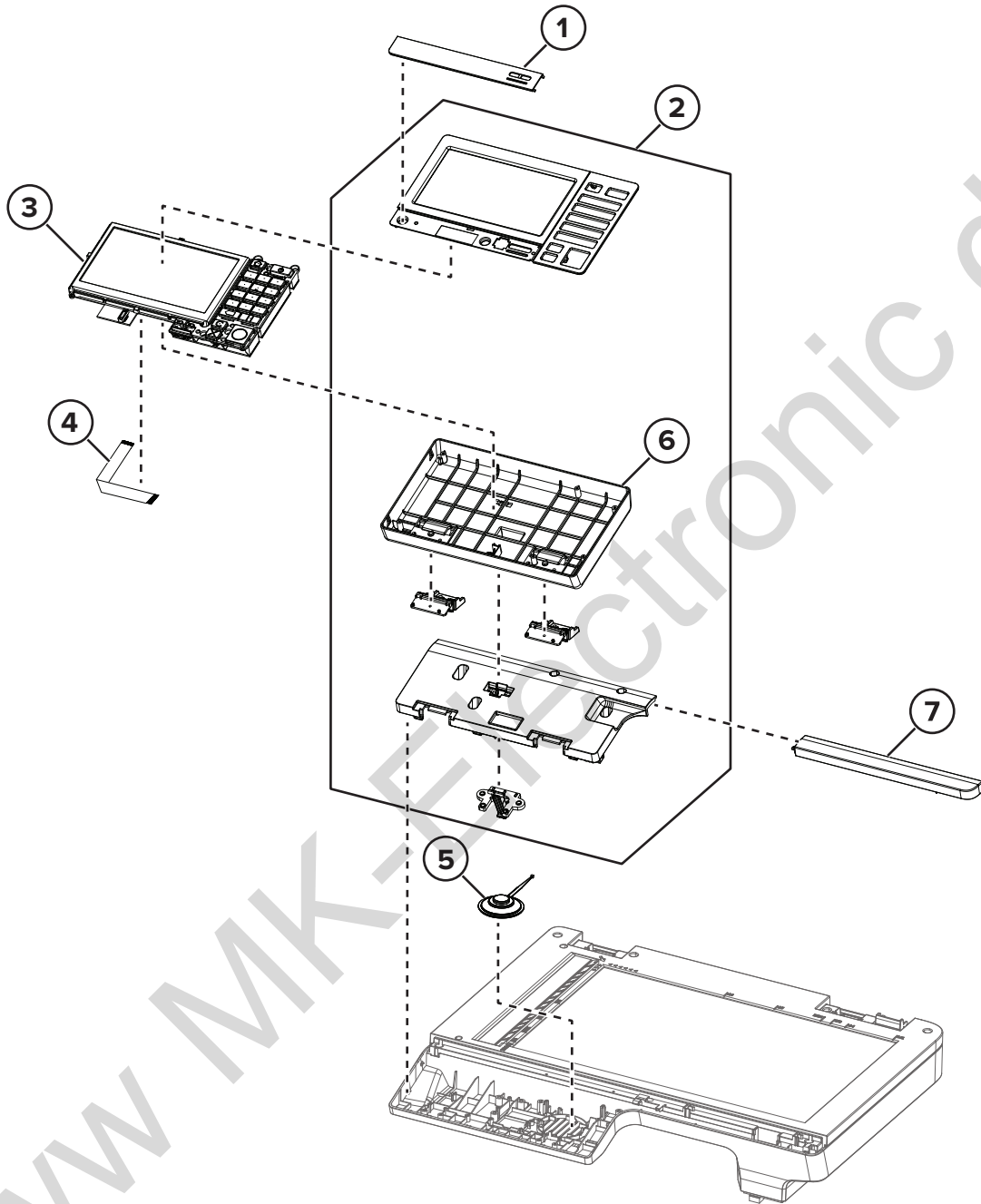
Assembly 1: Covers



Assembly 1: Covers

Asm-index	P/N	Units/mach	Units/FRU	Description	Removal procedure
1	41X1343	1	1	Top cover	“Top cover removal” on page 289
2	40X9102	1	1	Output extender	--
3	41X1357	1	1	Rear door and cover	“Rear door and cover removal” on page 287
4	41X2275	1	1	Rear access door	--
5	40X8521	1	1	Dust cover	--
6	41X1166	1	1	Right cover	“Right cover removal” on page 230
7	41X1233	1	1	Controller board access cover	“Right cover removal” on page 230
8	41X1164	1	1	Nameplate	“Nameplate removal” on page 245
9	41X1168	1	1	Left cover	“Left cover removal” on page 219
10	41X1358	1	1	Top access cover	“Top access cover removal” on page 247
11	41X2501	1	1	Scanner rear cover	“Scanner rear cover removal” on page 286

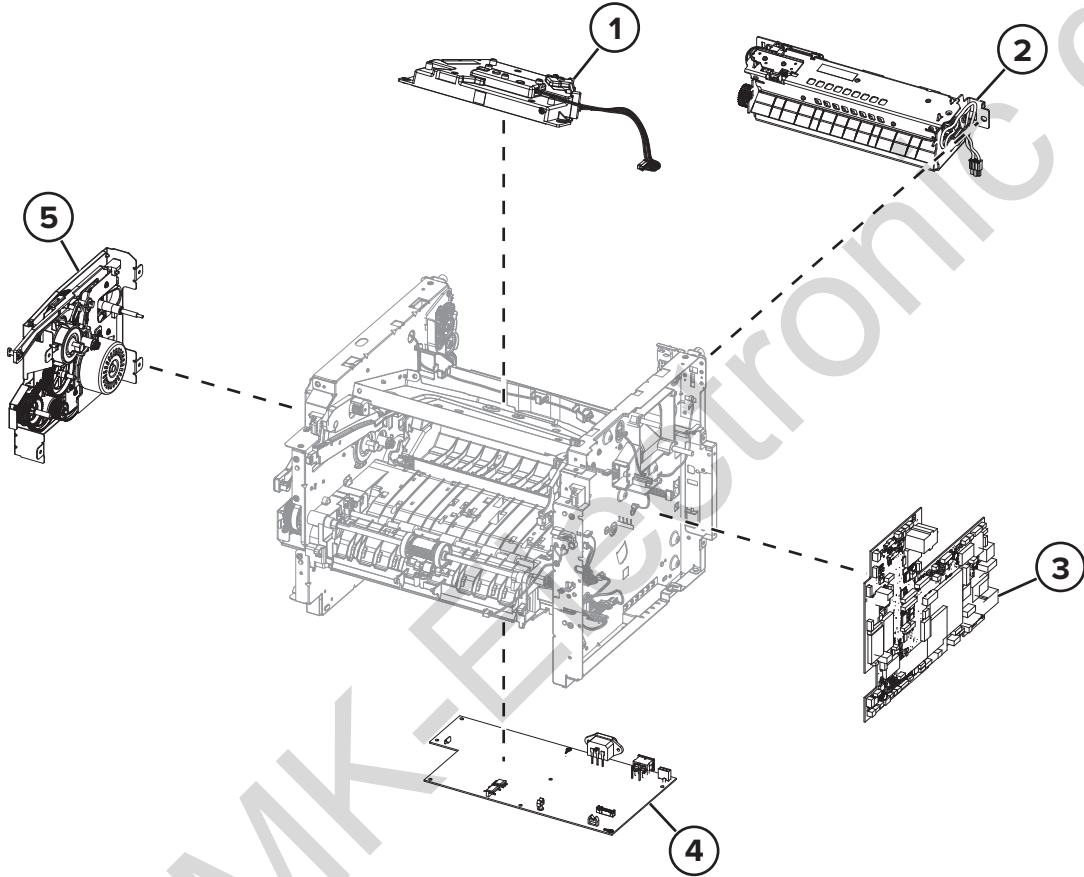
Assembly 2: Control panel



Assembly 2: Control panel

Asm-index	P/N	Units/mach	Units/FRU	Description	Removal procedure
1	41X2439	1	1	Bezel (MX622)	“Bezel removal” on page 248
2	41X2440	1	1	Control panel cover and buttons	“Control panel covers and buttons removal” on page 249
3	41X0051	1	1	Control panel display assembly	“Control panel display assembly removal” on page 248
4	41X2232	1	1	Control panel flat cable	“Control panel flat cable removal” on page 255
5	41X2230	1	1	Speaker	“Speaker removal” on page 252
6	41X1354	1	1	Control panel rear cover	“Control panel covers and buttons removal” on page 249
7	41X1345	1	1	Scanner front cover	“Scanner front cover removal” on page 252

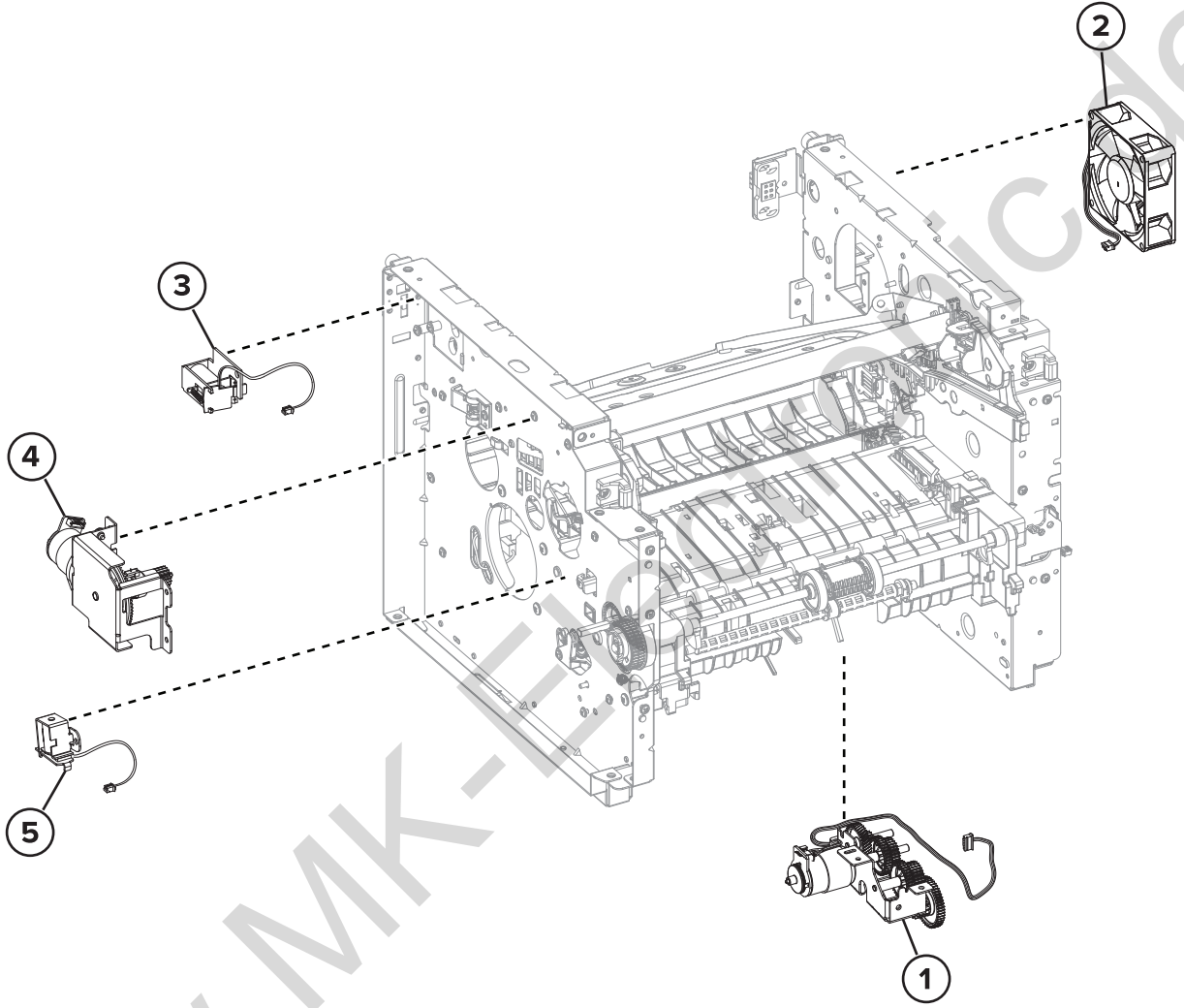
Assembly 3: Electronics 1



Assembly 3: Electronics 1

Asm-index	P/N	Units/mach	Units/FRU	Description	Removal procedure
1	41X1185	1	1	Printhead	“Printhead removal” on page 294
2	41X1178	1	1	Fuser, 110V	“Fuser removal” on page 288
2	41X1179	1	1	Fuser, 220V	“Fuser removal” on page 288
2	41X1180	1	1	Fuser, 100V	“Fuser removal” on page 288
3	41X1363	1	1	Controller board	“Controller board removal” on page 238
4	41X1201	1	1	Power supply, 100V/110V	“Power supply removal” on page 265
4	41X1202	1	1	Power supply, 220V	“Power supply removal” on page 265
5	41X1224	1	1	Main drive gearbox	“Main drive gearbox removal” on page 220

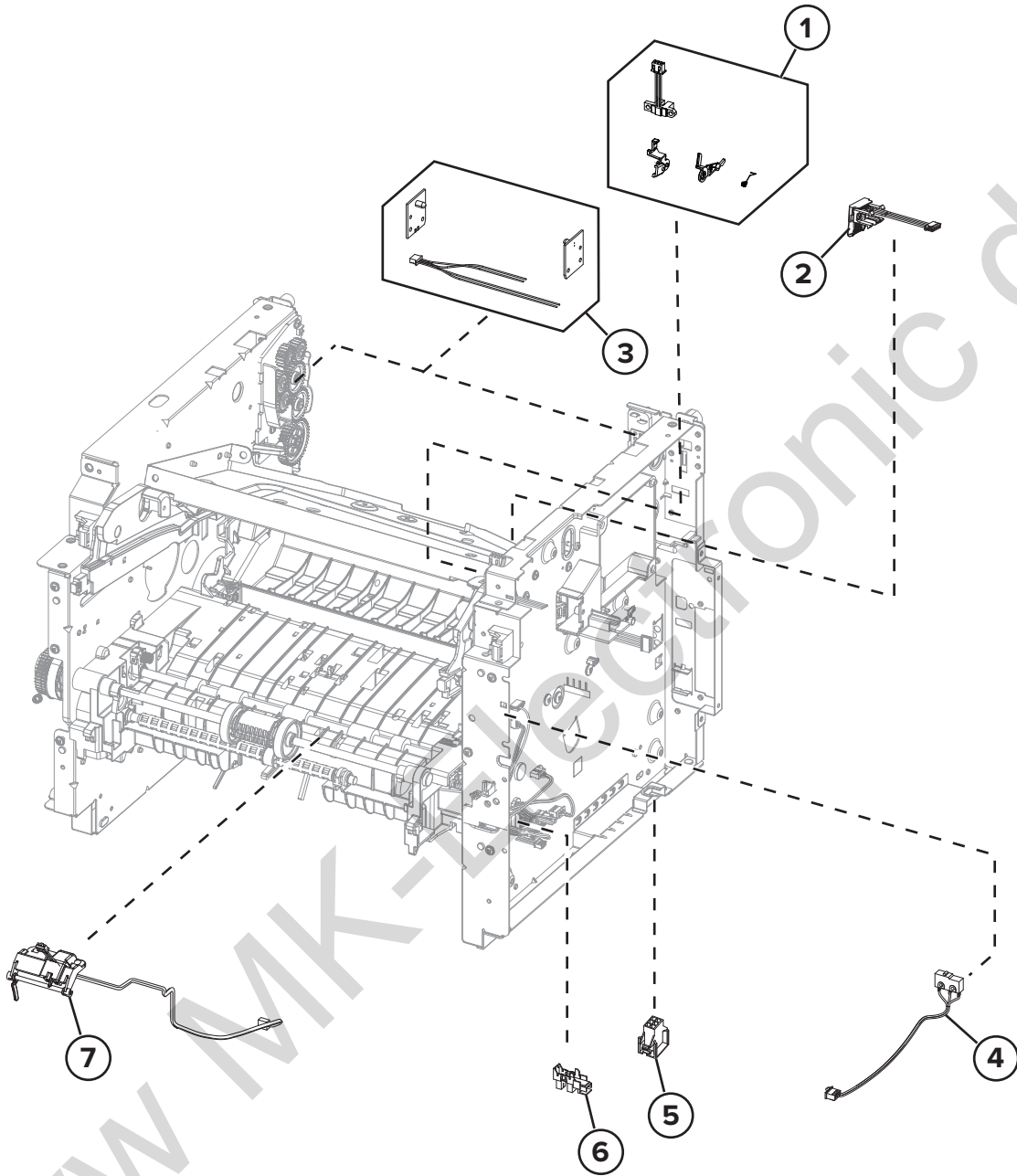
Assembly 4: Electronics 2



Assembly 4: Electronics 2

Asm-index	P/N	Units/mach	Units/FRU	Description	Removal procedure
1	41X1989	1	1	Pick/lift motor gearbox	“Pick/lift motor gearbox removal” on page 283
2	41X2259	1	1	Cooling fan	“Cooling fan removal” on page 236
3	41X1214	1	1	Reverse solenoid	“Reverse solenoid removal” on page 226
4	41X1237	1	1	Cartridge gearbox	“Cartridge gearbox removal” on page 229
5	41X1213	1	1	MPF solenoid	“MPF solenoid removal” on page 228

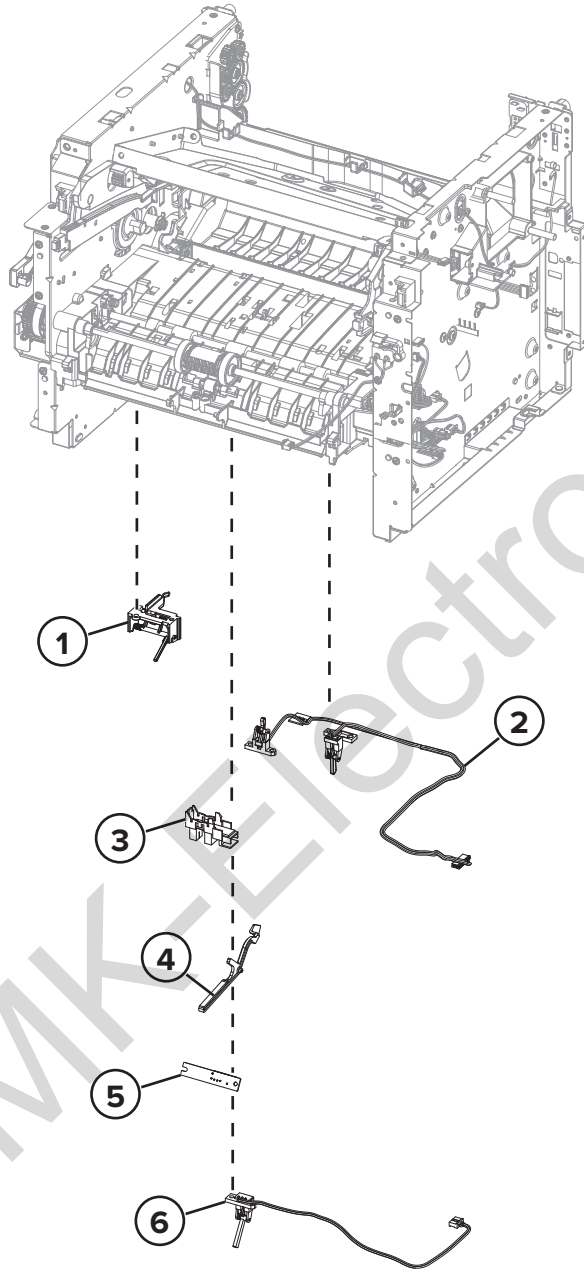
Assembly 5: Electronics 3



Assembly 5: Electronics 3

Asm-index	P/N	Units/mach	Units/FRU	Description	Removal procedure
1	41X1988	1	1	Sensor (cartridge barrel)	“Cartridge barrel shutter sensor kit removal” on page 242
2	41X1162	1	1	Toner cartridge smart chip contact	“Toner cartridge smart chip contact removal” on page 240
3	41X2274	1	1	Sensor (bin full)	“Sensor (bin full) removal” on page 293
4	41X1209	1	1	Sensor (front door)	“Sensor (front door) removal” on page 257
5	41X1236	1	1	Interconnect cable	“Interconnect cable removal” on page 233
6	41X1238	1	1	Sensor (tray present)	“Sensor (tray present) removal” on page 235
7	41X1210	1	1	Sensor (MPF paper present)	“Sensor (MPF paper present) removal” on page 262

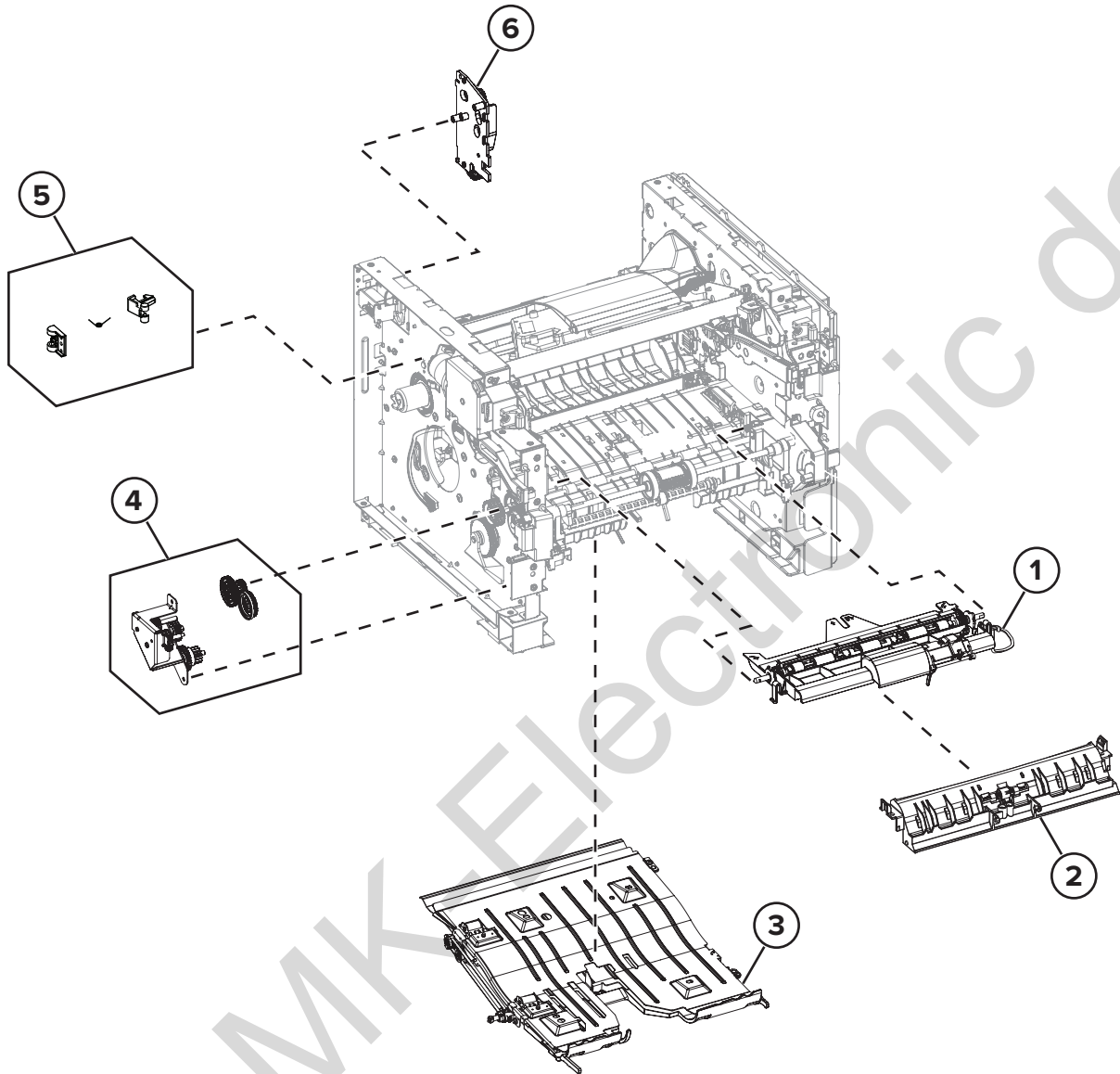
Assembly 6: Electronics 4



Assembly 6: Electronics 4

Asm-index	P/N	Units/mach	Units/FRU	Description	Removal procedure
1	41X1208	1	1	Sensor (trailing edge)	“Sensor (trailing edge) removal” on page 279
2	41X1206	1	1	Sensor (duplex and input)	“Sensors (duplex and input) removal” on page 270
3	41X1238	1	1	Sensor (paper present)	“Sensor (paper present) removal” on page 277
4	40X8800	1	1	Paper present sensor flag	“Paper present sensor flag removal” on page 280
5	40X8046	1	1	Sensor (toner density)	“Sensor (toner density) removal” on page 275
6	40X8044	1	1	Sensor (index)	“Sensor (index) removal” on page 272

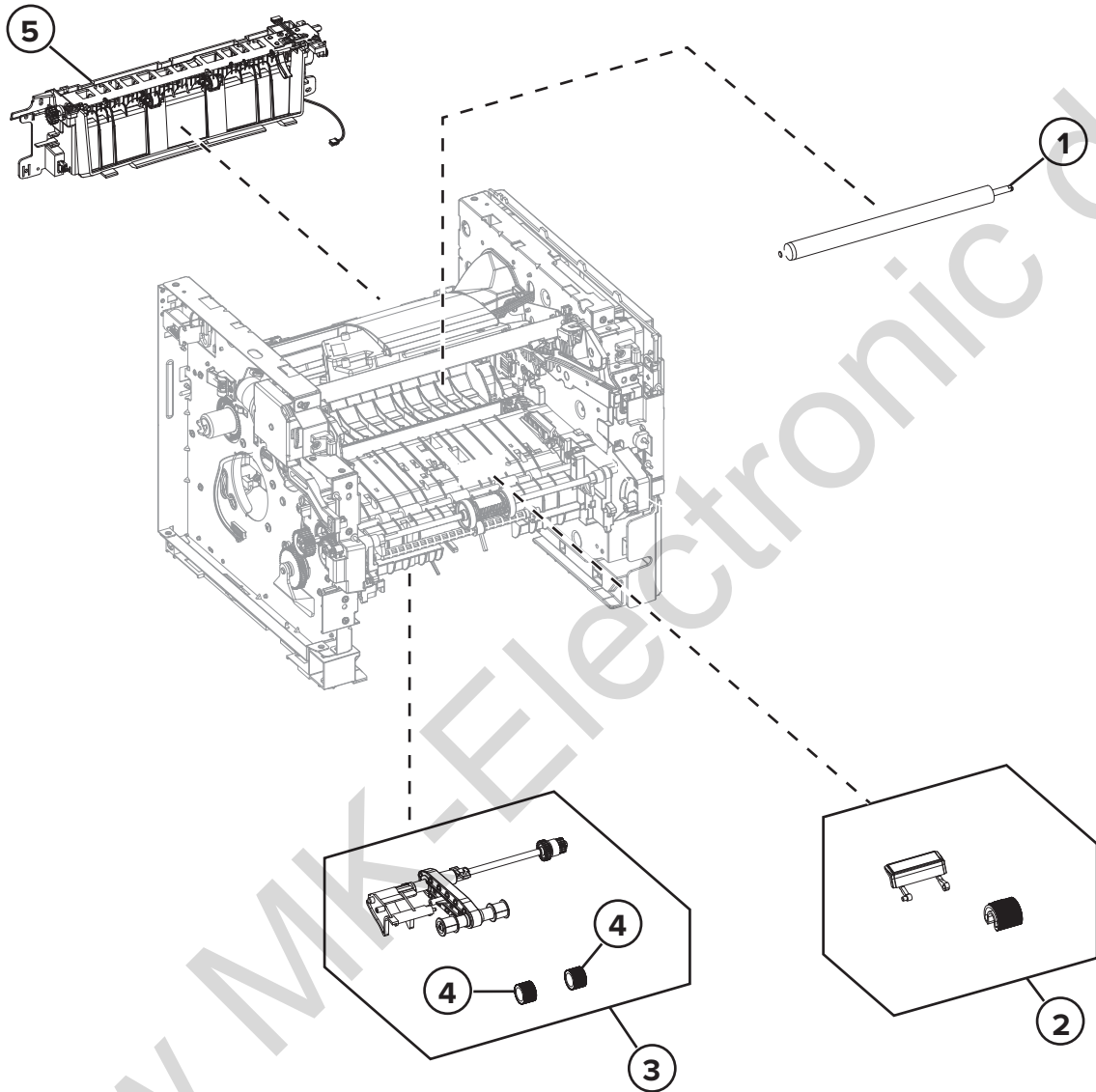
Assembly 7: Paper transport 1



Assembly 7: Paper transport 1

Asm-index	P/N	Units/mach	Units/FRU	Description	Removal procedure
1	41X1183	1	1	Jam access cover	“Jam access cover removal” on page 257
2	41X1184	1	1	Front input guide	“Front input guide removal” on page 263
3	41X1176	1	1	Duplex assembly	“Duplex removal” on page 267
4	41X1182	1	1	MPF gearbox	“MPF gearbox removal” on page 222
5	41X2255	1	1	Fuser actuator	“Fuser actuator removal” on page 224
6	41X2256	1	1	Redrive gear plate	“Redrive gear assembly removal” on page 288

Assembly 8: Paper transport 2

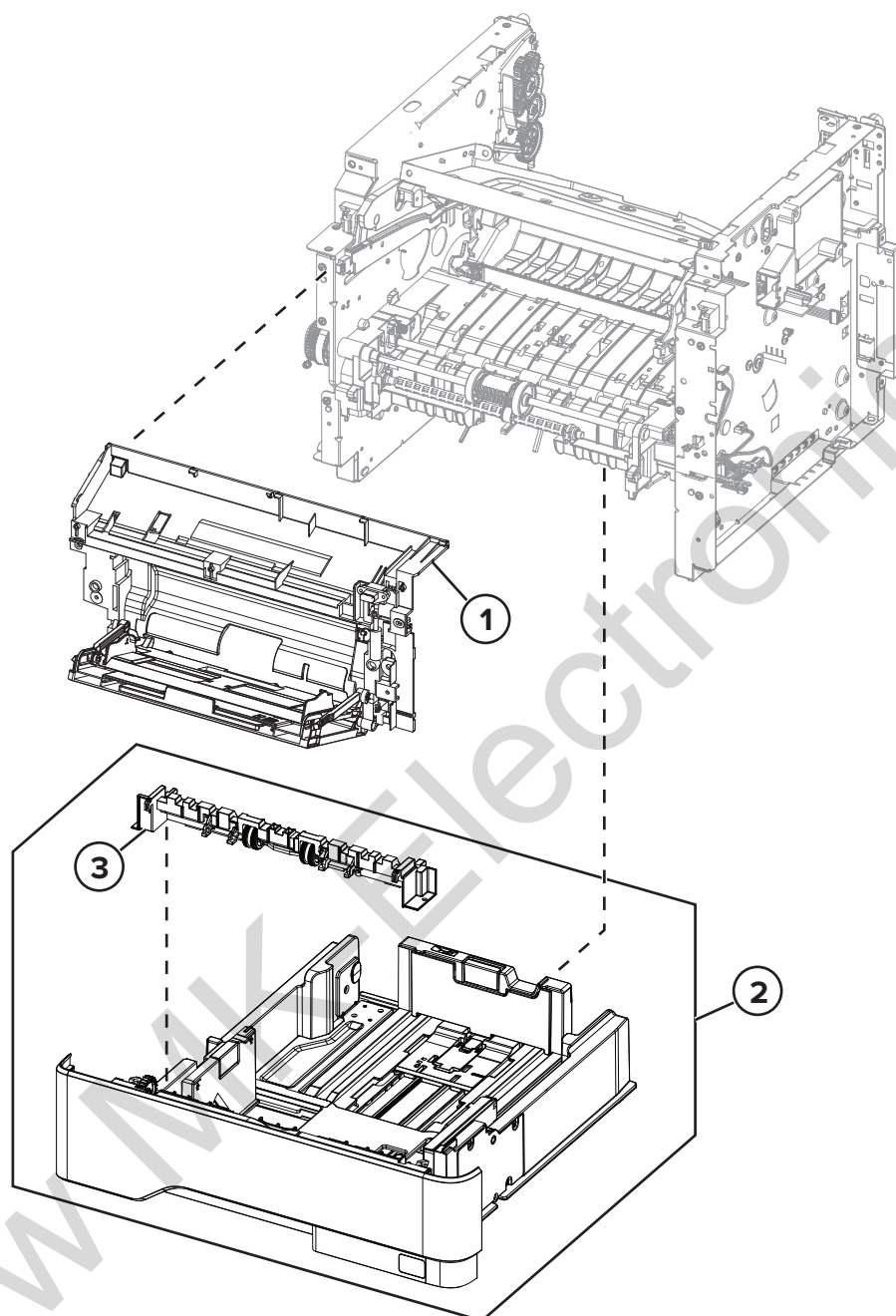


www.mk-electronic.de

Assembly 8: Paper transport 2

Asm-index	P/N	Units/mach	Units/FRU	Description	Removal procedure
1	40X8393	1	1	Transfer roller	“Transfer roller removal” on page 256
2	41X1197	1	1	MPF pick roller and separator pad	“MPF pick roller and separator pad removal” on page 259
3	41X1196	1	1	Pick roller assembly	“Pick roller assembly removal” on page 272
4	41X1198	2	2	Pick tire	--
5	41X1371	1	1	Redrive assembly	“Redrive assembly removal” on page 287

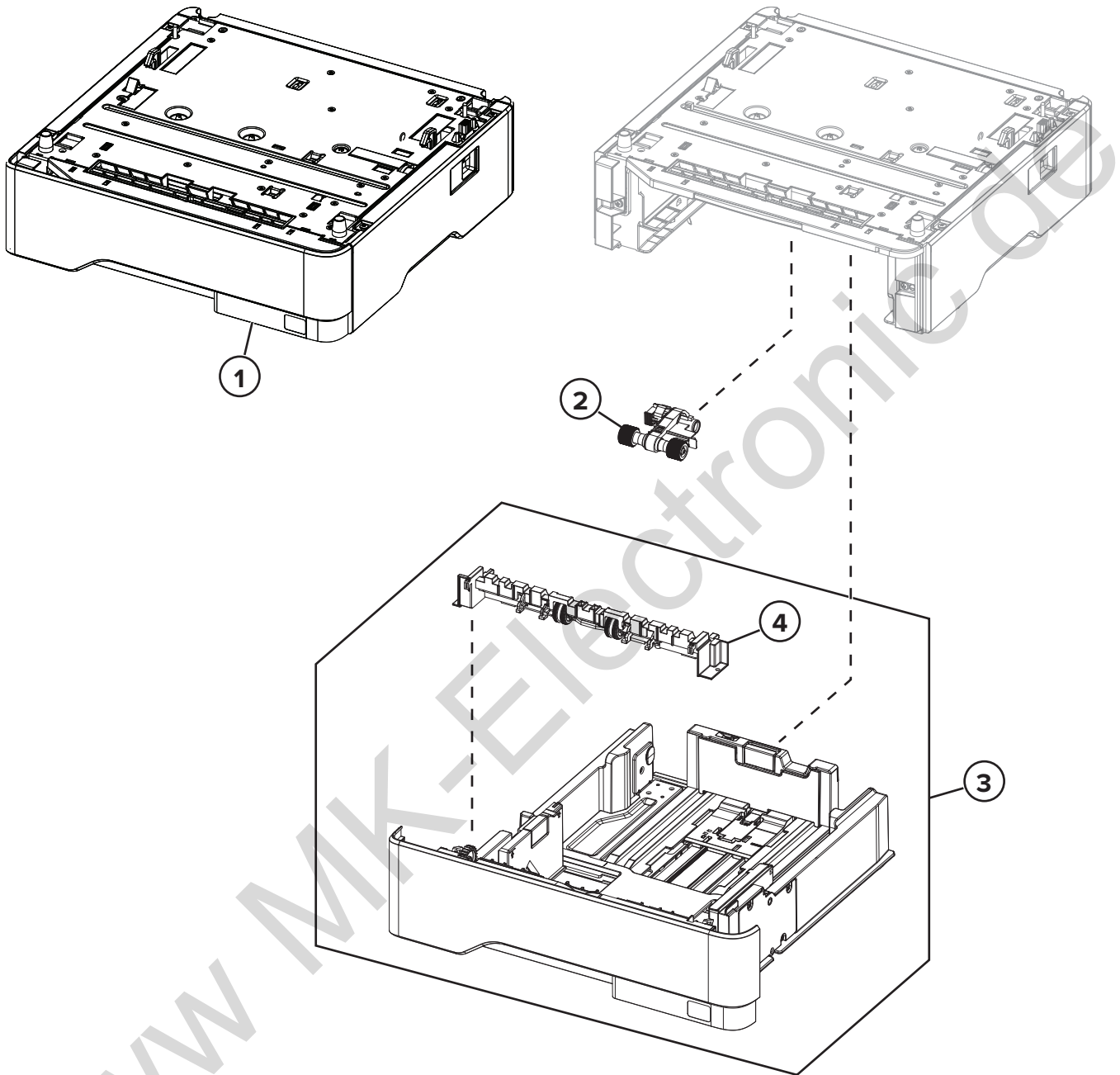
Assembly 9: MPF and standard tray



Assembly 9: MPF and standard tray

Asm-index	P/N	Units/mach	Units/FRU	Description	Removal procedure
1	41X2605	1	1	MPF with front access cover	“MPF with front access cover removal” on page 245
2	41X1987	1	1	Standard 550-sheet tray insert	--
3	41X1212	1	1	Separator roller assembly	--

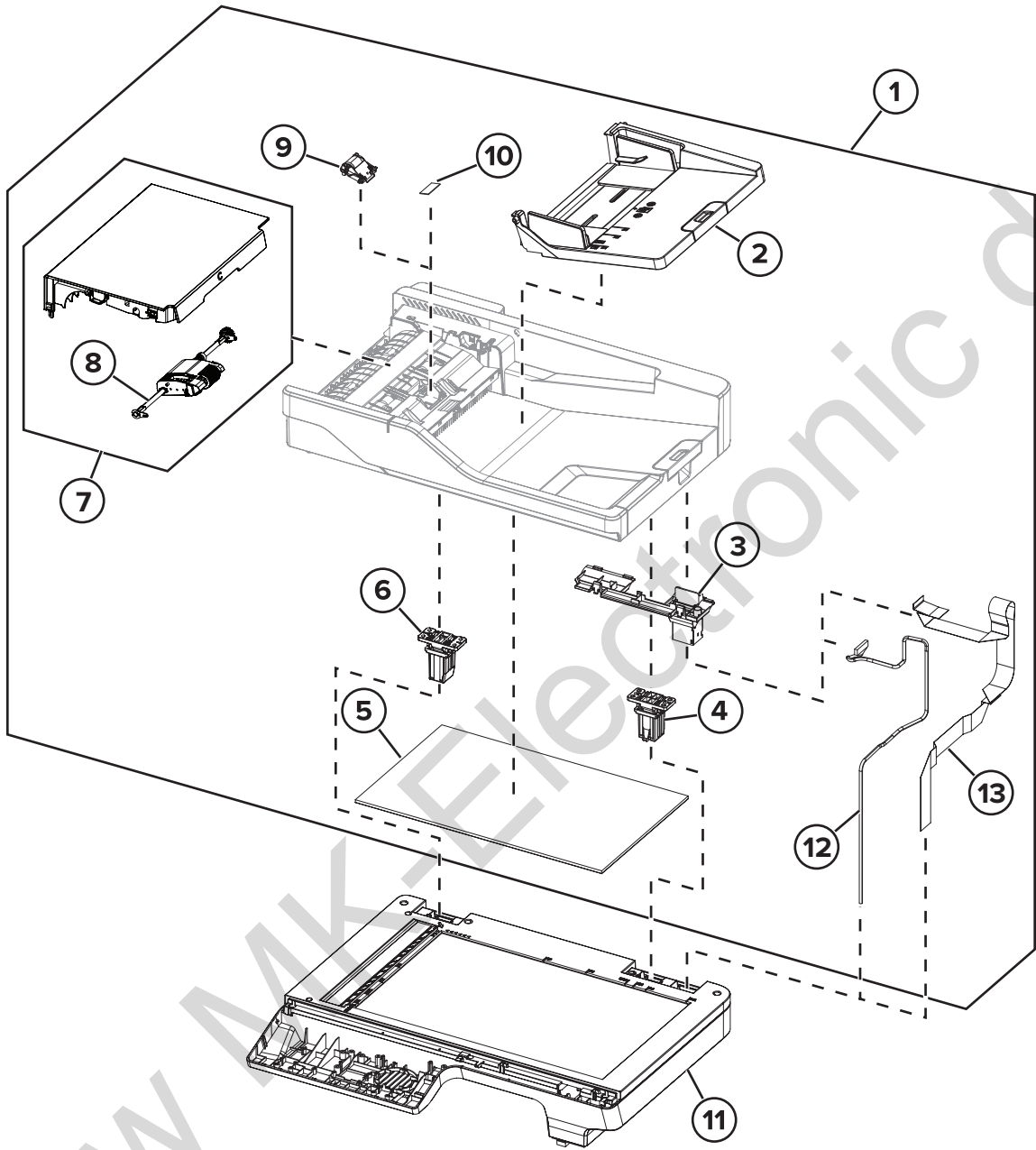
Assembly 10: Optional trays



Assembly 10: Optional trays

Asm-index	P/N	Units/opt	Units/FRU	Description	Removal procedure
1	41X1216	1	1	Optional 550-sheet tray	--
1	41X1217	1	1	Optional 250-sheet tray	--
2	41X1239	1	1	Pick roller	--
3	41X1222	1	1	550-sheet tray insert (optional tray)	--
3	41X1221	1	1	250-sheet tray insert (optional tray)	--
4	41X1212	1	1	Separator roller assembly	"Separator roller assembly removal" on page 313

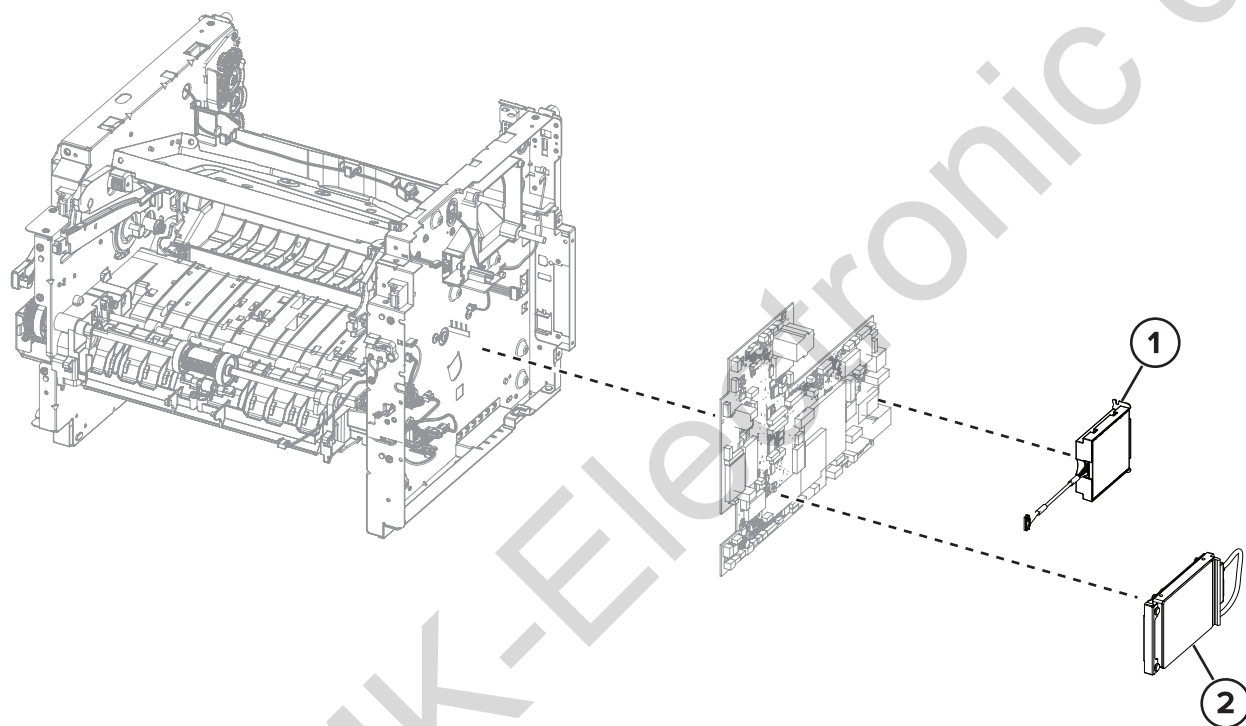
Assembly 11: Imaging



Assembly 11: Imaging

Asm-index	P/N	Units/mach	Units/FRU	Description	Removal procedure
1	41X1329	1	1	ADF assembly	“ADF assembly removal” on page 302
2	41X1335	1	1	ADF tray	“ADF tray removal” on page 299
3	41X2221	1	1	ADF cable cover	--
4	41X1321	1	1	ADF right hinge	“ADF right hinge removal” on page 304
5	41X1324	1	1	ADF cushion	--
6	40X9129	1	1	ADF left hinge	“ADF left hinge removal” on page 303
7	41X1318	1	1	ADF access door	“ADF access door removal” on page 305
8	41X1326	1	1	ADF roller	“ADF roller removal” on page 298
9	41X1325	1	1	ADF separator roller	“ADF separator roller removal” on page 298
10	41X1322	1	1	ADF restraint pad	“ADF restraint pad removal ” on page 297
11	41X1332	1	1	Flatbed scanner	“Flatbed scanner assembly removal” on page 306
12	41X1315	1	1	ADF cable	--
13	41X1316	1	1	ADF flat cable	“ADF flat cable removal” on page 308

Assembly 12: Fax card and hard disk

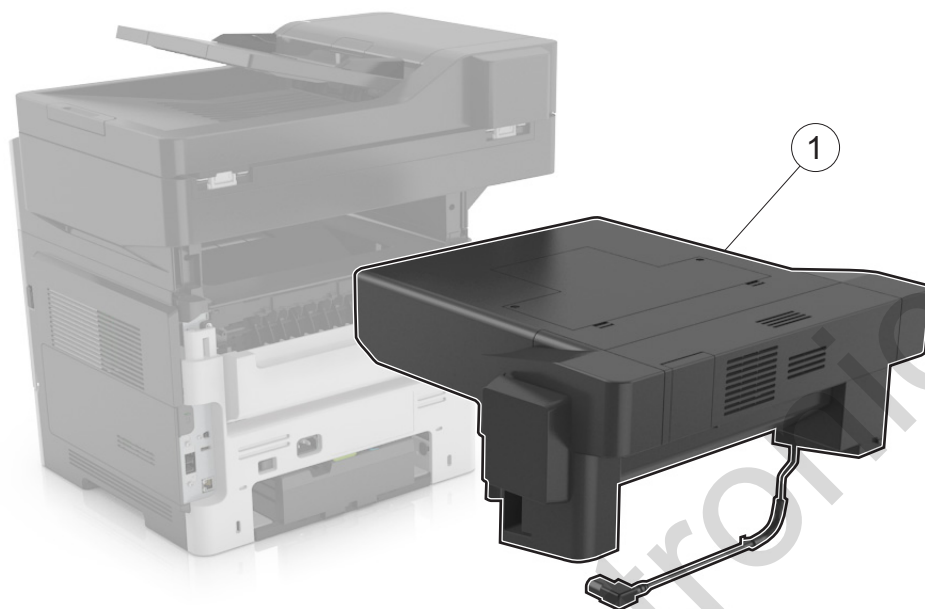


Assembly 12: Fax card and hard disk

Asm-index	P/N	Units/mach	Units/FRU	Description	Removal procedure
1	41X1374	1	1	Fax card (MX622)	--
2	40X9934	1	1	Printer hard disk (MX622adhe), 500GB	--

www MK-Electronic.de

Assembly 13: Staple finisher option

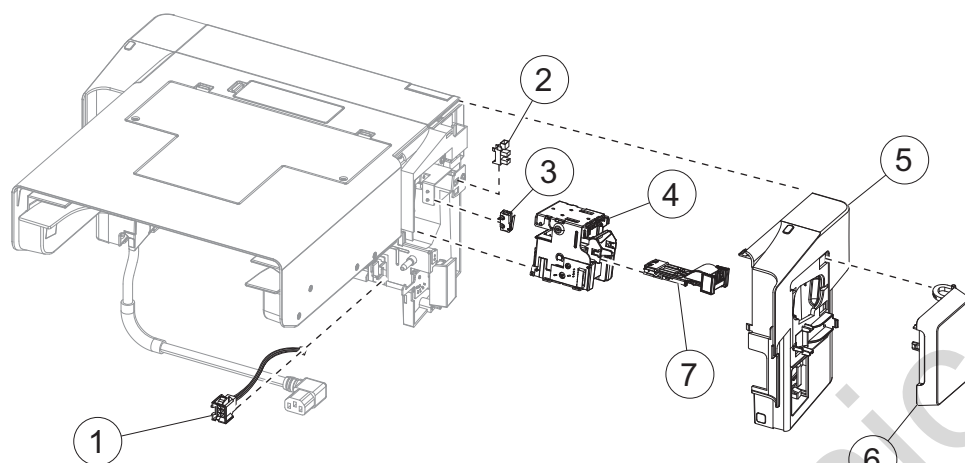


Assembly 13: Staple finisher option

Asm-index	P/N	Units/mach	Units/FRU	Description	Removal procedure
1	40X8121	1	1	Staple finisher option	“Staple finisher option removal” on page 315

www MK-Electronic de

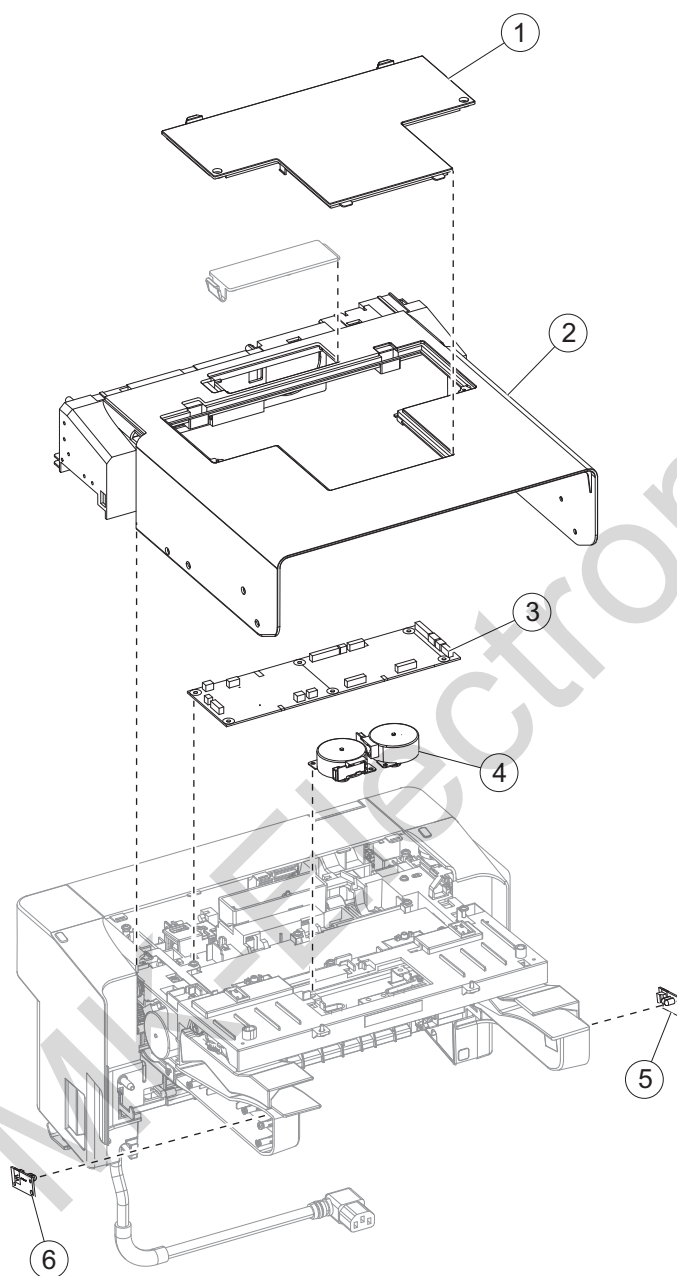
Assembly 14: Staple finisher (right)



Assembly 14: Staple finisher (right)

Asm-index	P/N	Units/mach	Units/FRU	Description	Removal procedure
1	40X8144	1	1	Stapler interface cable	“Stapler interface cable removal” on page 339
2	40X7592	1	1	Sensor (stapler access door)	“Sensor (stapler access door) removal” on page 323
3	40X8139	1	1	Stapler door close limit switch with cable	“Stapler door close limit switch removal” on page 325
4	40X8142	1	1	Stapler carriage assembly	“Stapler carriage assembly removal” on page 323
5	40X8130	1	1	Stapler right cover	“Stapler right cover removal” on page 320
6	40X8129	1	1	Stapler cartridge access door	“Stapler cartridge access door removal” on page 318
7	40X8149	1	1	Staple roll holder	“Staple roll holder removal” on page 319

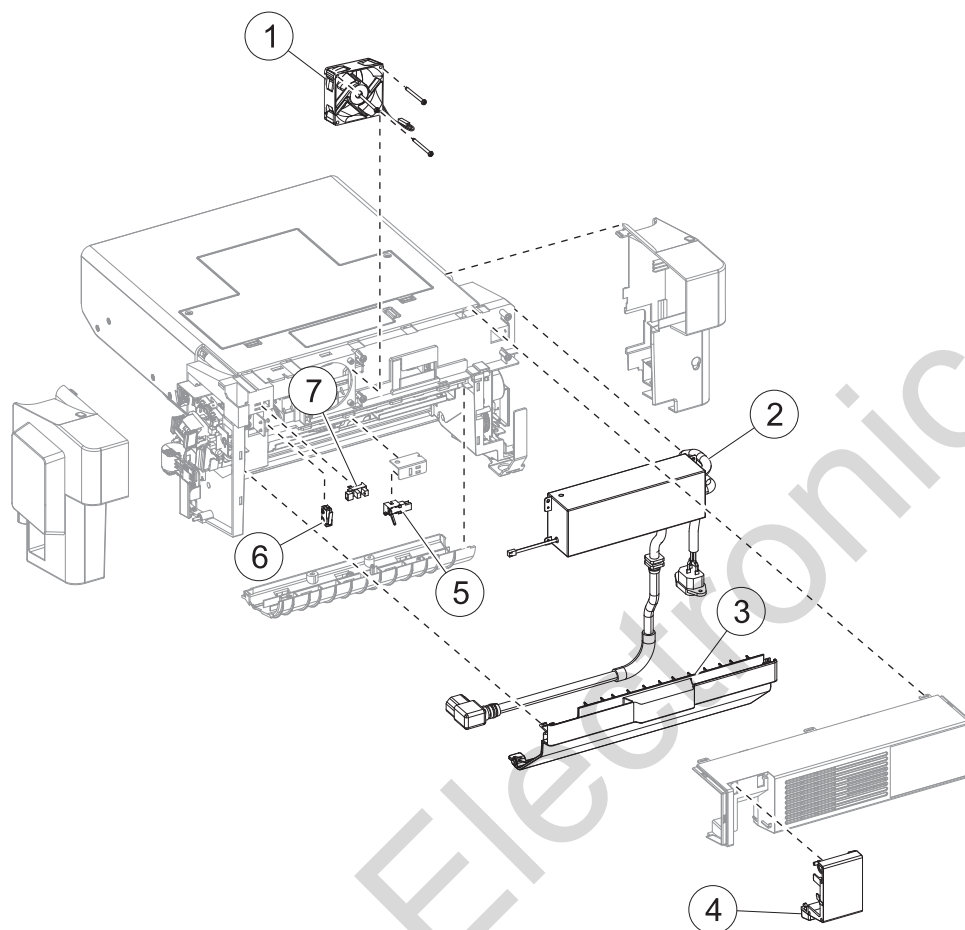
Assembly 15: Staple finisher (top)



Assembly 15: Staple finisher (top)

Asm-index	P/N	Units/mach	Units/FRU	Description	Removal procedure
1	40X8140	1	1	Stapler service cover	“Stapler service cover removal” on page 333
2	40X8141	1	1	Stapler top cover	“Stapler top cover removal” on page 341
3	40X8137	1	1	Stapler controller board	“Stapler controller board removal” on page 333
4	40X8125	1	1	Stapler tamper motor	“Motor (stapler left tamper) removal” on page 333 or “Motor (stapler right tamper) removal” on page 334
5	40X8131	1	1	Sensor (stapler bin full send)	“Sensor (stapler bin full send) removal” on page 346
6	40X8132	1	1	Sensor (stapler bin full receive)	“Sensor (stapler bin full receive) removal” on page 344

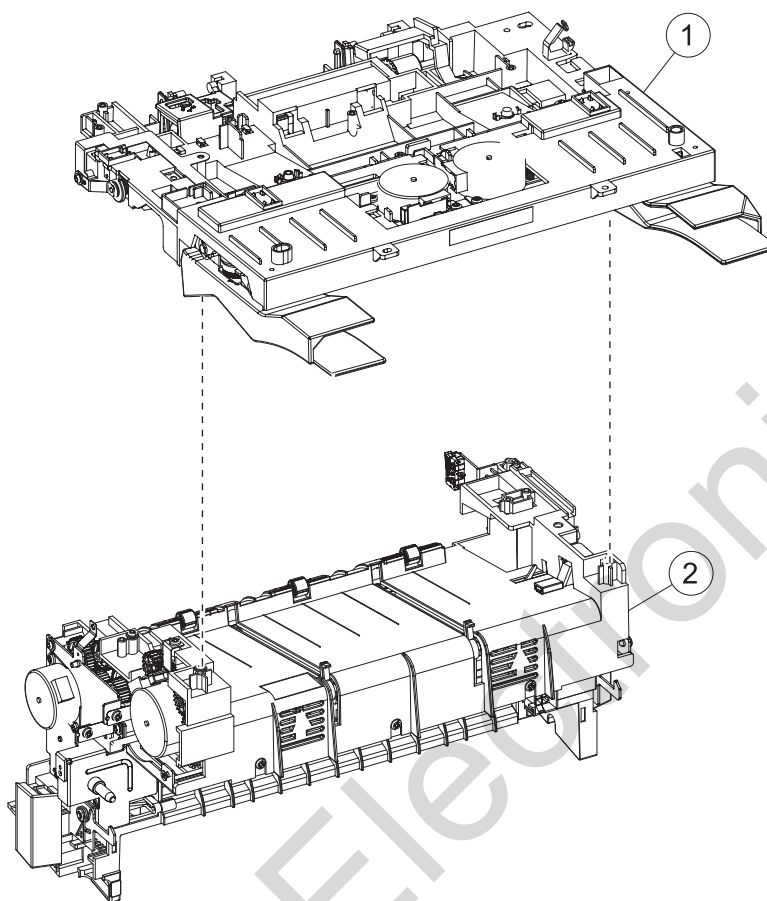
Assembly 16: Staple finisher (rear)



Assembly 16: Staple finisher (rear)

Asm-index	P/N	Units/mach	Units/FRU	Description	Removal procedure
1	40X8148	1	1	Stapler cooling fan	“Stapler cooling fan removal” on page 337
2	40X8135	1	1	Stapler power supply unit	“Stapler power supply unit removal” on page 337
2	40X8540	1	1	Stapler power supply unit—China	“Stapler power supply unit removal” on page 337
3	40X8128	1	1	Stapler rear door	“Stapler rear door removal” on page 322
4	40X8458	1	1	Trapped staple access door	“Trapped staple access door removal” on page 332
5	40X8134	1	1	Sensor (stapler pass through)	“Sensor (stapler pass through) removal” on page 349
6	40X8138	1	1	Stapler rear door close limit switch with cable	“Stapler rear cover close limit switch removal” on page 335
7	40X7592	1	1	Sensor (stapler rear door)	“Sensor (stapler rear cover) removal” on page 330

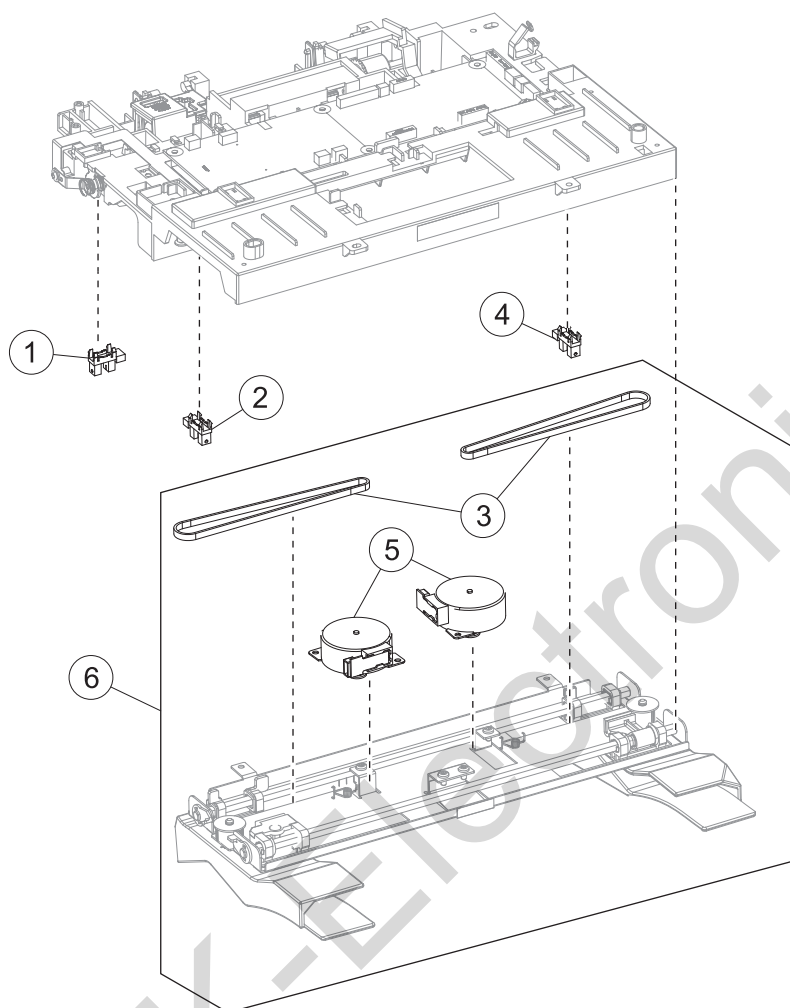
Assembly 17: Staple finisher exit assembly



Assembly 17: Staple finisher exit assembly

Asm-index	P/N	Units/mach	Units/FRU	Description	Removal procedure
1	40X8748	1	1	Stapler tamper main assembly	“Tamper main assembly removal” on page 351
2	40X8751	1	1	Stapler accumulator assembly	“Stapler accumulator assembly removal” on page 358

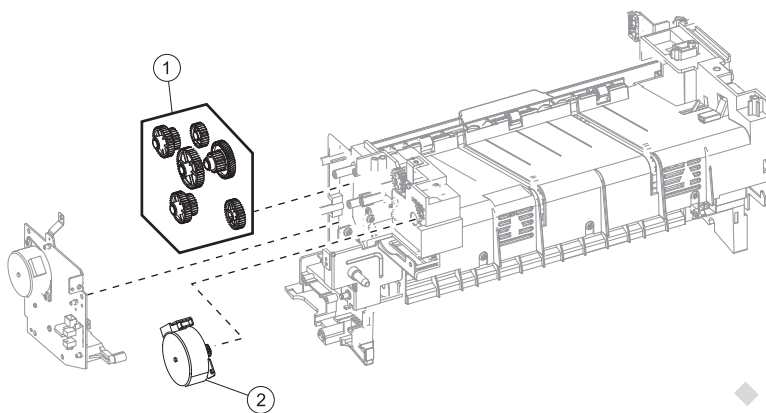
Assembly 18: Staple finisher tamper assembly



Assembly 18: Staple finisher tamper assembly

Asm-index	P/N	Units/mach	Units/FRU	Description	Removal procedure
1	40X8754	1	1	Sensor (stapler paddle HP)	“Sensor (stapler paddle HP) removal” on page 360
2	40X8754	1	1	Sensor (stapler left tamper HP)	“Sensor (stapler left tamper HP) removal” on page 359
3	40X8750	2	2	Stapler tamper drive belt	“Tamper drive belt removal” on page 354
4	40X8754	1	1	Sensor (stapler right tamper HP)	“Sensor (stapler right tamper HP) removal” on page 358
5	40X8125	2	1	Stapler tamper motor	“Motor (stapler left tamper) removal” on page 333 or “Motor (stapler right tamper) removal” on page 334
6	40X8749	1	1	Tamper sub-assembly	“Tamper sub-assembly removal” on page 352

Assembly 19: Staple finisher accumulator assembly



www MK-Electronic.de

Assembly 19: Staple finisher accumulator assembly

Asm-index	P/N	Units/mach	Units/FRU	Description	Removal procedure
1	40X8752	1	1	Stapler diverter gearbox	“Diverter gearbox removal” on page 355
2	40X8753	1	1	Motor (stapler paddle)	“Motor (stapler paddle) removal” on page 329

Assembly 20: Maintenance kits

Asm-index	P/N	Units/mach	Units/FRU	Description	Removal procedure
NS	41X1227	1	1	Maintenance Kit (100 V) <ul style="list-style-type: none"> • Fuser (100 V) • MPF pick roller and separator pad • Pick tires • Separator roller assembly • Transfer roller 	N/A
NS	41X1225	1	1	Maintenance Kit (110 V) <ul style="list-style-type: none"> • Fuser (110 V) • MPF pick roller and separator pad • Pick tires • Separator roller assembly • Transfer roller 	N/A
NS	41X1226	1	1	Maintenance Kit (220 V) <ul style="list-style-type: none"> • Fuser (220 V) • MPF pick roller and separator pad • Pick tires • Separator roller assembly • Transfer roller 	N/A

www.MK-Electronic.de

Assembly 21: Miscellaneous

Asm-index	P/N	Units/mach	Units/FRU	Description	Removal procedure
NS	40X9934	1	1	Hard disk, SATA	--
NS	41X1010	1	1	User Flash Memory, 256MB	--
NS	41X1002	1	1	Forms and Bar Code card	--
NS	41X1004	1	1	IPDS card	--
NS	41X1006	1	1	PRESCRIBE card	--
NS	41X1014	1	1	Font card, Traditional Chinese	--
NS	41X1013	1	1	Font card, Simplified Chinese	--
NS	41X1015	1	1	Font card, Korean	--
NS	41X1016	1	1	Font card, Japanese	--
NS	41X1872	1	1	Marknet N8372, Front WiFi—FSM	--
NS	40X8523	1	1	RS-232C Serial Interface card	--
NS	40X8524	1	1	Parallel 1284-B Interface card	--
NS	41X1945	1	1	MarkNet N8230 Fiber Ethernet 100BASE-FX (LC), 1000BASE-SX (LC) (Fiber + side backpack)	--
NS	41X2055	1	1	Smart card	--
NS	40X1367	1	1	Parallel cable, 10 feet	--
NS	40X1368	1	1	USB 2.0 cable, 2 meters	--
NS	3086579	1	1	Software CD Note: The part number is for internal use only and is not orderable.	--