

H.323 Compatible and Proprietary Software Product Update

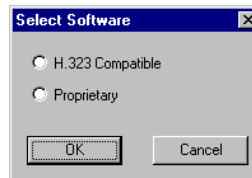


1/12/01

Part Number: 82088251, Rev. B

Introduction

This update is included to aid you in making the decision to install either the **H.323 Compatible** software or the Multi-Tech **Proprietary** software from this CD-ROM. After clicking **Install Software**, you will see the following dialog box:



H.323 Compatible

If your network includes Gatekeeper or other third-party VOIP Gateways or endpoints that support the H.323 protocol (e.g., Microsoft NetMeeting), you will likely want to install the H.323 compatible software provided on this CD-ROM. Click **H.323 Compatible** on the dialog box, then perform the software installation procedures in the MVP400/800 Quick Start Guide (Part No. 82088202) for software version 3.51.

Note: The MVP 400/800 must have 8 MB of Ram to function properly in the H.323 mode. First, verify that two SIMMs are installed. Remove the front panel of the unit. If there are two SIMMs installed, you have 8 MB of RAM. If not and you are upgrading a MVP400/800, you will need to install a second 4 MB SIMM into the empty SIMM socket. The installed SIMM should be a 72-pin dram/simm/fast page mode, not EDO. The SIMM is available from Supplynet (P/N 94099400). Visit their Web site at www.thesupplynet.com or call 800-826-0279.

If you are using proprietary software, one 4 MB SIMM is adequate.

Multi-Tech Proprietary

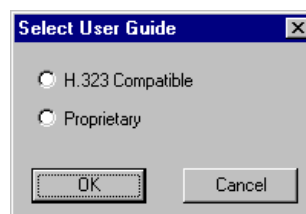
If you have an existing base of installed Multi-Tech MultiVOIP units running the non-H.323 software, version 3.0x, select **Proprietary** on the **Select Software** dialog box, then perform the software installation procedures in the Quick Start Guide (Part No. 82088200) for software version 3.0x.

Your new MultiVOIP has the H.323 Compatible software (version 3.51) preinstalled. Therefore, after loading the Proprietary version of the software you will need to (from **Start/Programs/MultiVOIP -V3.01D/ (utilities)** or by clicking the icons in the **MultiVOIP -V3.01D** program group) do the following:

1. Download Voice Coders
2. Download Factory Defaults
3. Download Firmware

User Guide

Click **Install Manuals**, then on the following dialog box select your User Guide to match the Software selection you made above.



Magix 400 E & M Tie Card

When interfacing a MVP 400/800 to a Magix's 400 E&M Tie Card, you must take pin 7 from the MultiVOIP and wire it to the grounding screw on the Magix's chassis in order for the E&M circuit to work.

Refer to Appendix B in the MVP 400/800 User Guide for pin out information and information on connecting the Magix 400 ground screw to the MultiVOIP.