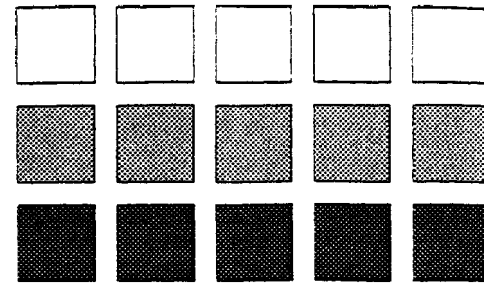
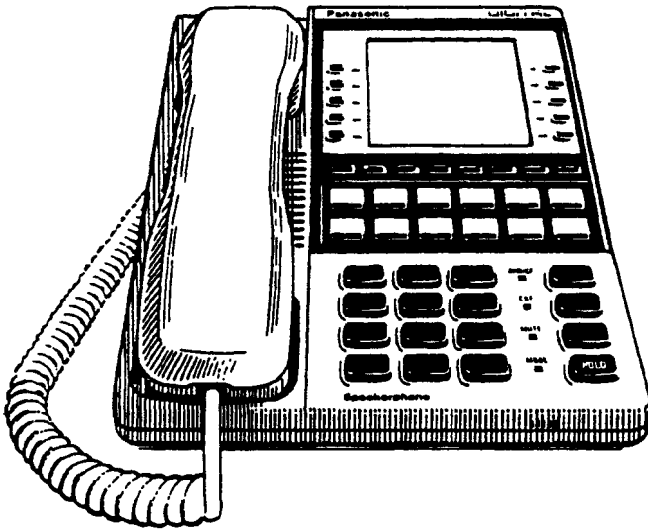


Panasonic®

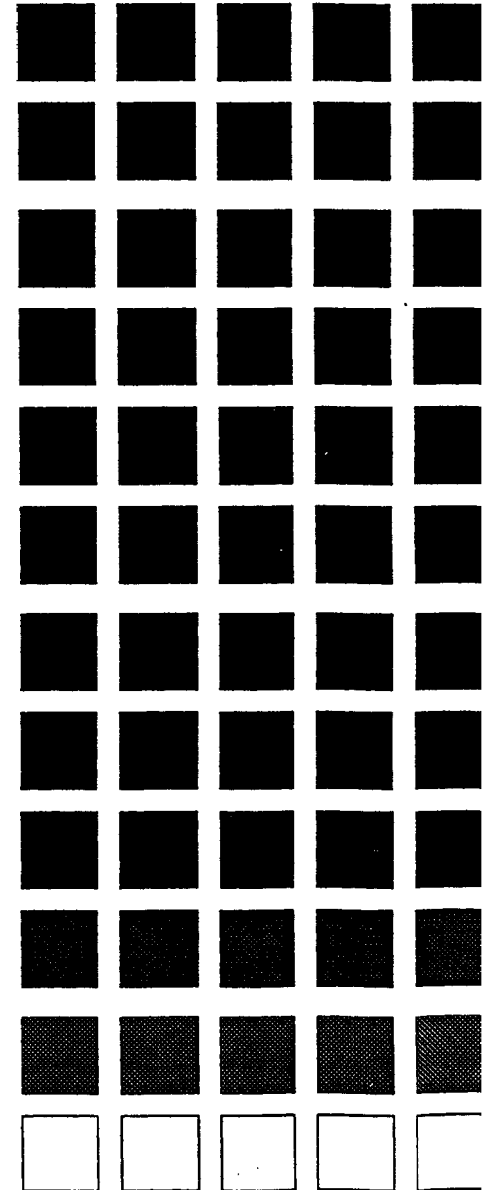
DBS

Digital Business System



Section 320

DBS 824 to DBS Interconnection Supplement



Issued 8/1/95

Doc. No. DBS-70-320



Warning: This service information is designed for experienced repair technicians only and is not designed for use by the general public. It does not contain warnings or cautions to advise non-technical individuals of potential dangers in attempting to service a product. Products powered by electricity should be serviced or repaired only by experienced professional technicians. Any attempt to service or repair the product or products dealt with in this service information by anyone else could result in serious injury or death.

The contents of this manual are subject to change without notice and do not constitute a commitment on the part of Panasonic Communications & Systems Company (PCSC). Every effort has been made to ensure the accuracy of this document. However, due to ongoing product improvements and revisions, Panasonic cannot guarantee the accuracy of printed **material** after the date of publication nor can it accept responsibility for errors or omissions. Panasonic will update and revise this document as needed.

The software and hardware described in this document may be used or copied only in accordance with the terms of the license pertaining to said software or hardware.

Reproduction, publication, or duplication of this manual, or any part thereof, in any manner, mechanically, electronically, or photographically, is prohibited without permission of the Panasonic Communications & Systems Company (PCSC).

@Copyright 1995 by Panasonic Communications & Systems Company

All rights reserved.

Table of Contents

Introduction 1
Guidelines 1
Installation 6

Introduction

A DBS 824 cabinet can be connected to a DBS 40, 72 or 96 cabinet in order to increase capacity. This document includes connection procedures, as well as capacities for these two-cabinet systems.

This chapter covers the following topics:

Topic	Page
Guidelines	1
Installation	6

Guidelines

- The DBS is always the master and the DBS 824 is always the slave.
- The DBS requires the CPC-B version 6.1 or later and the SCC-B.
- Since the CPC-B card is the controlling card, follow the programming instructions in the DBS Section 400 and the operating instructions in DBS Section 700.
- Since both DBS and DBS 824 items are used, refer to the installation instructions in both the DBS Section 300 and the DBS 824 Section 300.
- If an MFR card is used, it must be installed in the DBS 824 CPC slot. The MFRU card cannot be used.
- T1 can only be used with the DBS 96 in a DBS 96 to DBS 824 Dual Cabinet System. No other combination supports T1.
- The SMDR, Bus Monitor, etc. are provided from the DBS cabinet.
- The DBS 824 cabinet only supports loop start trunks.
- The DBS 824 cabinet does not support AECs. An SLT-A or OPX adaptor must be used to connect analog devices.
- Figures 1 through 3 shows slot usage for two-cabinet combinations.
- Table 2 on page 3 shows possible two cabinet configurations and maximums.
- The DBS 824 may have most options connected including Caller ID, OPX, VAU. Exceptions or considerations include the following:

Table 1. DBS 824 Dual Cabinet Feature Considerations

Feature	CPC-B 6.1	CPC-B 7.0	Notes:
Auto Repeat Dial	N/A	N/A	
Auto Redial	N/A	Available	
Personal Speed Dials	10 PSDs/ Extension	10 PSDs/ Extension	
System Speed Dials	90 SSDs	200 SSDs	
2-Port OPL	N/A	N/A	
2-Port MFR	N/A	N/A	
Night 2 Mode	N/A	Available	
SMDR/Bus Monitor	See Note.	See Note.	Uses DBS CN6 SMDR/Bus Monitor instead of DBS 824 Connector.
External Ringer Audio Separation	N/A	N/A	Uses DBS EPA Connector for both External Ringer and Paging
Internal Hold Tone	N/A	Available	
Full Call Forwarding Outside	N/A	Available	CPC 6.1 supports call forwarding an internal call outside (723)
Battery Alarm	N/A	N/A	
Extension Port Based Door Phone Adaptor	N/A	Available	
4-Port Single Line Telephone Adaptor	N/A	Available	

N/A = Not Available

Table 2. Trunk and extension port maximums for double-cabinet systems

System Combinations		Trunk Ports	Extension Ports	Expansion Ports (Trunk lines or extensions)
Master	Slave			
DBS 40	DBS 824	16	48	0 (See Note 1.)
DBS 72	DBS 824	24	72	0 (See Note 1.)
DBS 96	DBS 824	32	88	8 (See Note 2.)

Notes:

1. When a DBS 40 or DBS 72 is connected to a DBS 824, the expansion ports cannot be used.
2. The DBS 96 cabinet must be used for expansion ports.

Figure 1. Slot usage for two-cabinet systems, DBS 40 + DBS 824

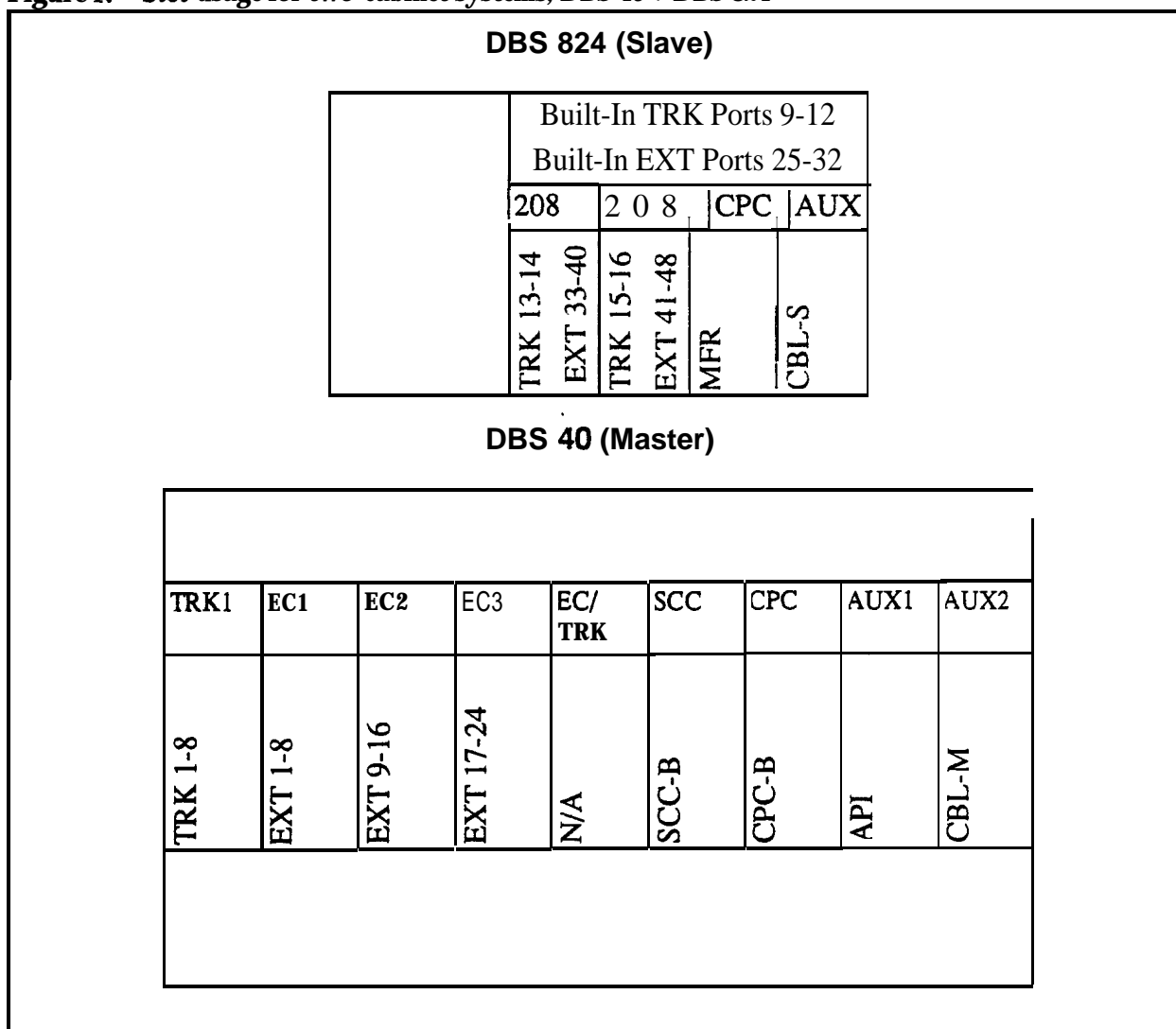


Figure 2. Slot usage for two-cabinet systems, DBS 72 + DBS 824

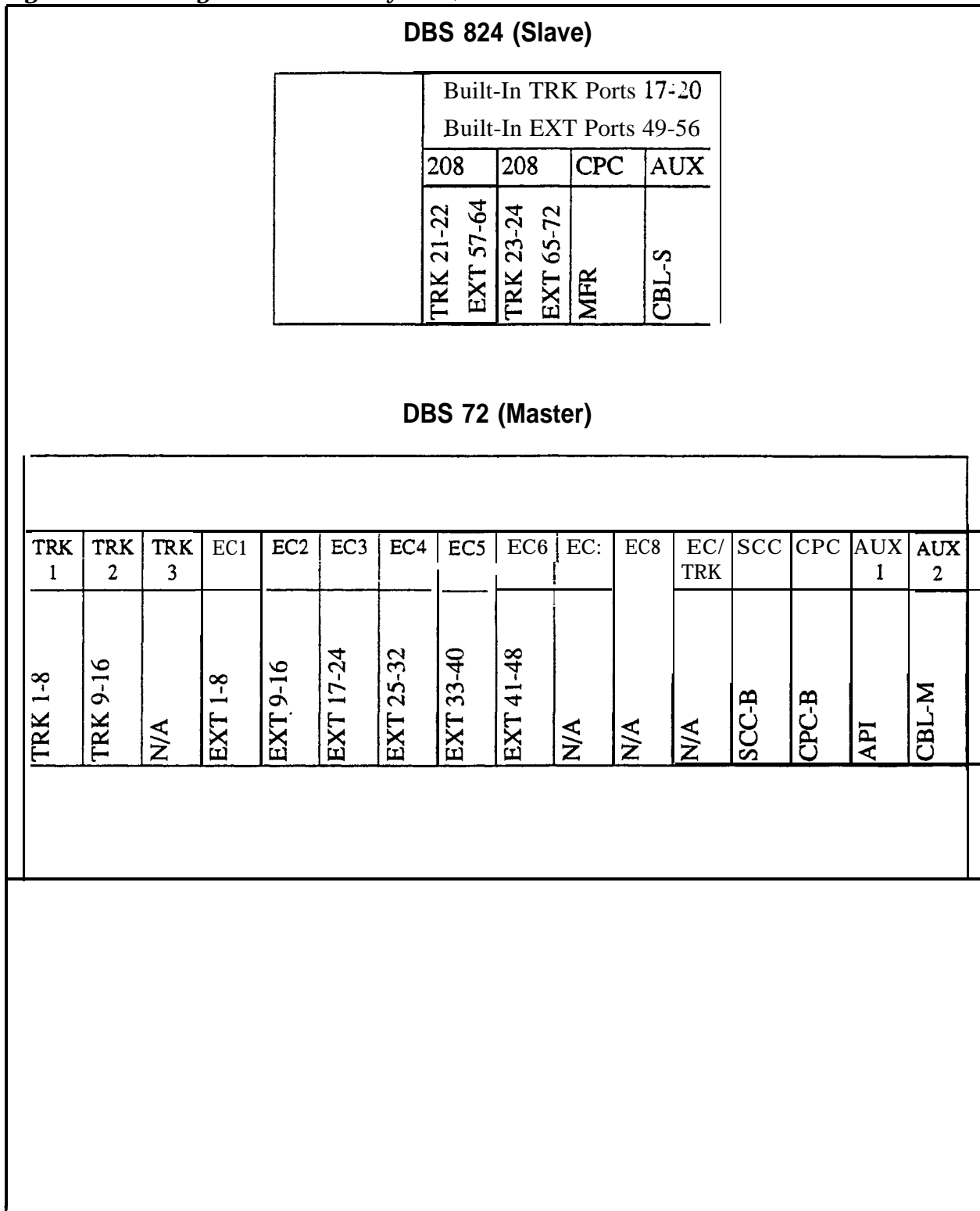


Figure 3. Slot usage for two-cabinet systems, DBS 96 + DBS 824

DBS 824 (Slave)																	
												Built-In TRK Ports 33-36					
												Built-In EXT Ports 73-80					
				208				208				CPC		AUX			
TRK 37-38				EXT 81-88				TRK 39-40				EXT 89-96		MFR		CBL-S	
DBS 96 (Master)																	
TRK 1	TRK 2	TRK 3	EC1	EC2	EC3	EC4	EC5	EC6	EC7	EC8	EC/ TRK	SCC	CPC	AUX 1	AUX 2		
TRK 1-8	TRK 9-16	TRK 17-24	EXT 1-8	EXT 9-16	EXT 17-24	EXT 25-32	EXT 33-40	EXT 41-48	EXT 49-56	EXT 57-64	TRK 25-32 or EXT 65-72	SCC-B	CPC-B	API	CBL-M		
<p>Notes:</p> <p>*See "T1 Interface" in Chapter 4 of the DBS Installation Manual Section 300 for EC/TRK port numbers for a T1 installed in the DBS 96.</p>																	

Installation

1. Set SW1 on the CBL-M card according to the following table.

Table 3. CBL-M switch settings

System Configurations		Switch Settings							
Master	Slave	1	2	3	4	5	6	7	8
DBS 40	DBS 824	ON	ON	ON	ON	ON	ON	OFF	ON
DBS 72	DBS 824	ON	OFF	ON	ON	ON	ON	OFF	OFF
DBS 96	DBS 824	OFF	ON	OFF	ON	ON	OFF	OFF	OFF

2. Install the circuit cards according to the layouts shown in the Figures 1 through 3.

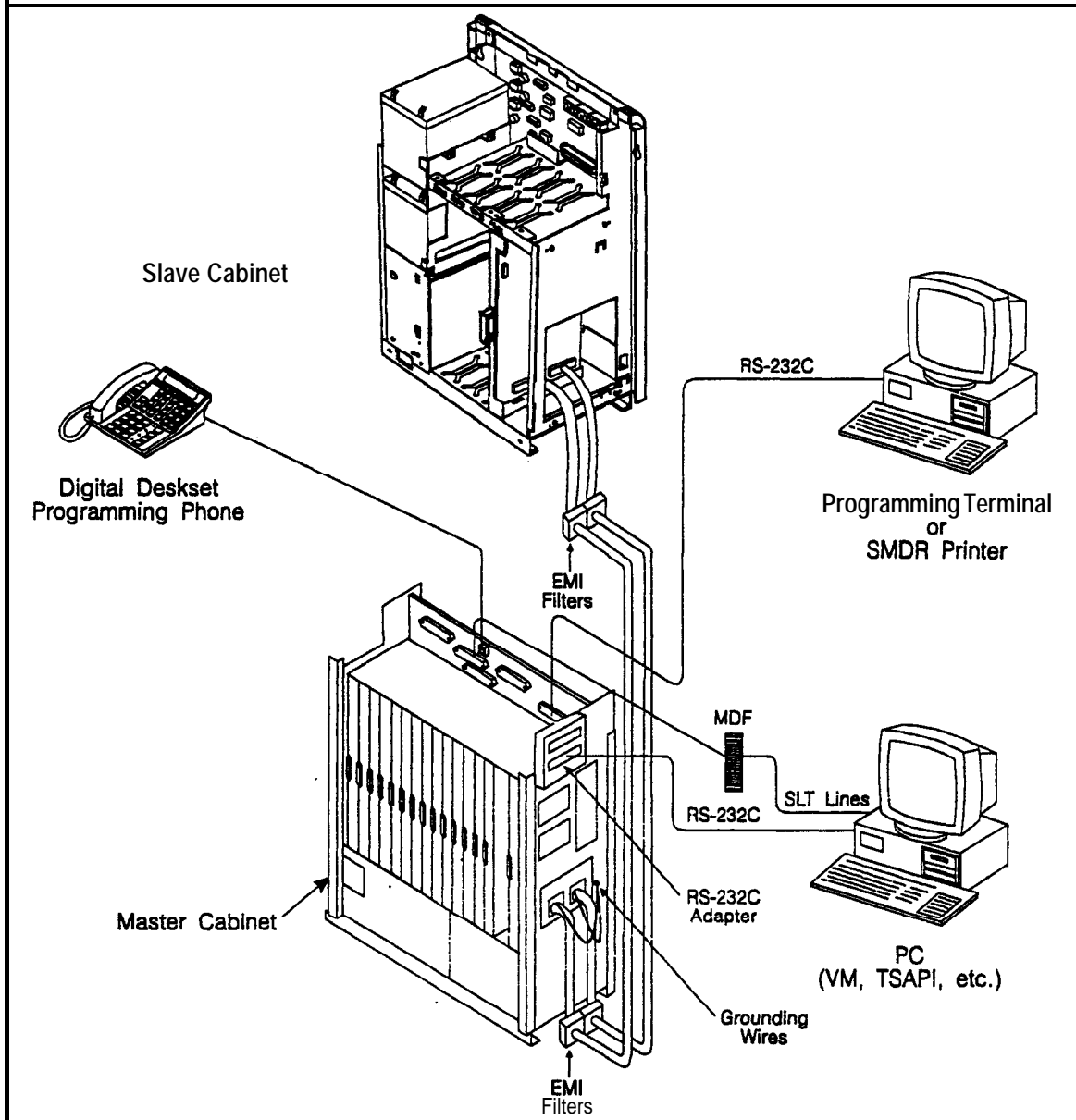
Note: The port numbers for each slot are fixed.

3. Using the cables provided, connect the CBL-M card in the master cabinet to the CBL-S card installed in the slave cabinet. The cables should be connected with the green ground cables located at the CBL-M card.

Note: The EMI filter must be installed as close to the cabinet as possible, as shown in Figure 4 on page 7.

4. Connect the green ground lead on each of the DBS cables to a side frame screw on the DBS cabinet.

Figure 4. DBS to DBS 824 cabinet installation



Caution: DO NOT connect the Red and Black wires from the CBL-S card to the DBS 824 Power Supply. Connecting the wires may damage the equipment.

5. If the Red and Black wires on the CBL-S card have exposed conductors, separate the wires and cover the exposed conductors on each wire with electrical tape.
6. Secure the Red and Black wires out of the way.

Figure 5. CBL-S Red and Black Wire Location

