

## SD Memory Card Installation/Upgrade Guide

### Table of Contents

---

Preparation..... 2

Installing a New Hybrid IP-PBX..... 5

Upgrading a Hybrid IP-PBX from a Previous Version of System Software ..... 7

Restoring a Hybrid IP-PBX to a Previous System Version..... 13

---

# Section 1

## Preparation

*Please read the information in this section before installing or upgrading the SD Memory Card.*

### 1.1 Introduction

This leaflet provides procedures for installing the SD Memory Card for Software Upgrade in a new Hybrid IP-PBX, and also for upgrading system software from a previous version. These procedures involve transferring files between the Hybrid IP-PBX, the SD Memory Card, and a PC running KX-TDA Maintenance Console.

At any point during a procedure, you can use the SD Card File View and Load option from KX-TDA Maintenance Console's Utility menu to view the header information of files on the SD Memory Card. This allows you to confirm that the correct versions of relevant files have been copied to the SD Memory Card.

The procedures described in this leaflet use the following files, contained on the SD Memory Card:

File	Description
DSYS	User data
PMPR	Hybrid IP-PBX main software
DLNGx (x=0–2)	Extension LCD language data
DIxxx	Initial user data files
DKEYSD	Enhanced feature access file

#### **IMPORTANT**

- In order to avoid possible corruption of data on the SD Memory Card, please ensure that the "SD ACCESS" LED is off before pressing the Reset Button.
- The SD Memory Card poses a choking hazard. Keep the SD Memory Card out of reach of children.
- The SD Memory Card must be inserted in the SD Memory Card slot of the Hybrid IP-PBX before start up.
- Before touching the System Initialize Switch, discharge static electricity by touching ground or wearing an earthing strap.

## 1.1.1 New Features

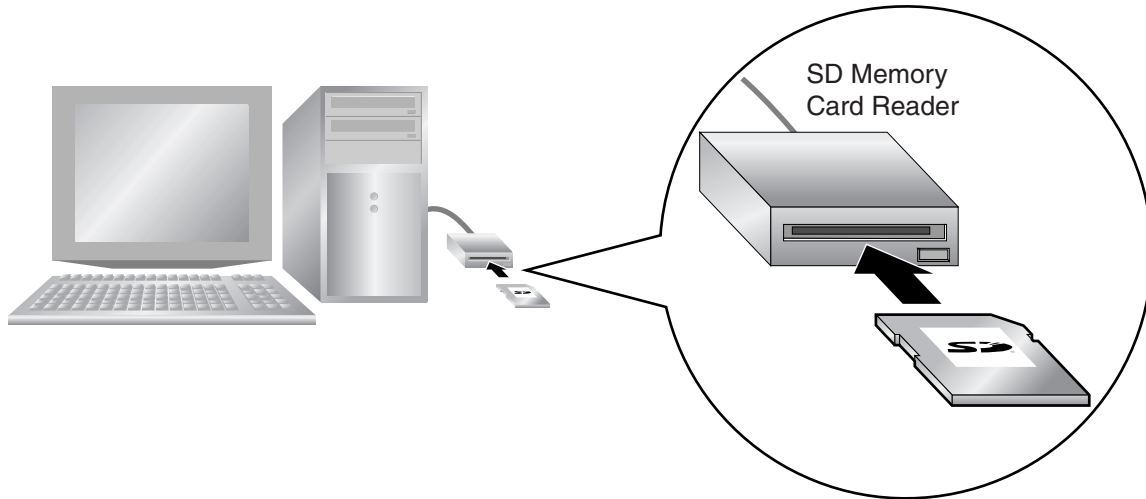
The KX-TDA0920 provides the following enhanced features. For details on these features, see the Feature Guide of the KX-TDA100/KX-TDA200.

### Enhanced Features

- Network Direct Station Selection (NDSS)
- Enhanced CTI functions

## 1.2 Before Installing SD Memory Card for Software Upgrade

### Back up the DKEYSD file



The DKEYSD file stored on the SD Memory Card contains data necessary to use the new features. If this file is damaged, or accidentally deleted, these new features will not function. Using an SD Memory Card Reader, back up all of the files and folders on the SD Memory Card, including the DKEYSD file, to a PC. The contents of the DKEYSD file are different for every SD Memory Card, so you must back up each SD Memory Card separately.

## Section 2

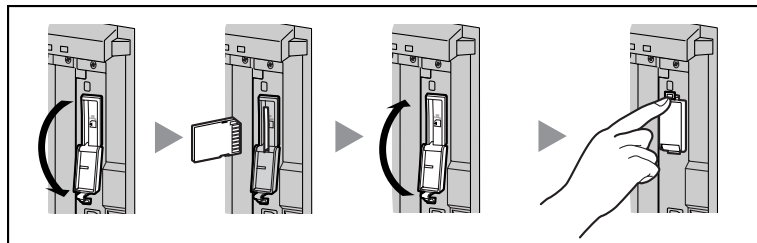
# Installing a New Hybrid IP-PBX

*Before using the SD Memory Card for Software Upgrade, it is necessary to prepare the correct system data files using a connected PC.*

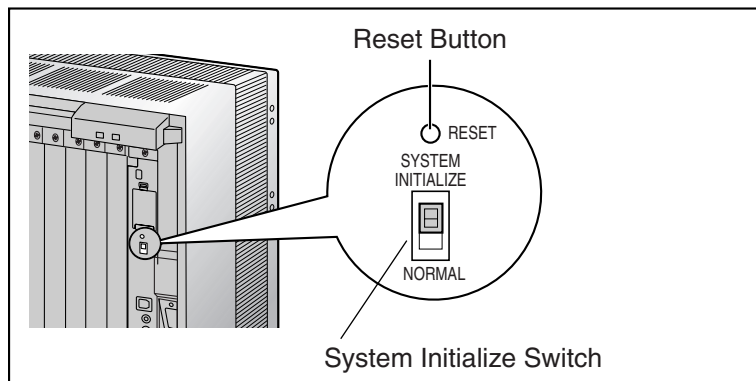
## 2.1 Procedure

Before beginning the install procedure, make sure that power is not supplied to the Hybrid IP-PBX, and Maintenance Console for KX-TDA version 2.0 is installed to the PC.

1. Install the SD Memory Card in the SD Memory Card slot of the PBX.



2. Set the System Initialize Switch to the "SYSTEM INITIALIZE" position.



3. Turn on the power to the PBX.
4. While the RUN indicator is flashing, return the System Initialize Switch to the "NORMAL" position.

Initialization may take about 1 min to 3 min. When completed, the RUN indicator will stop flashing and turn on.

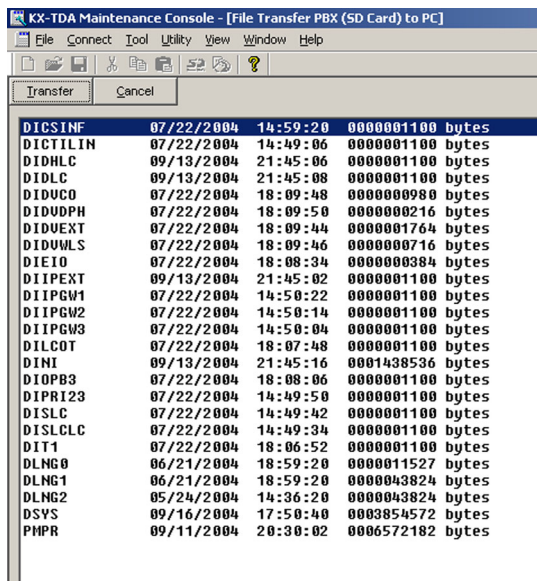
5. Connect to the PBX using KX-TDA Maintenance Console.  
Quick Setup will start automatically.

- Set the data items as prompted.  
Quick Setup will finish.

## Backing Up DKEYSD file

If the contents of the SD Memory Card have not been previously backed up to the PC using an SD Memory Card Reader, it is strongly recommended to back up the DKEYSD file now. To do so, follow the procedure below.

- From KX-TDA Maintenance Console's **Utility** menu, select **File Transfer PBX (SD Card) to PC**.



- Select **DKEYSD** from the list of files.
- Click **Transfer**.  
The Save dialog box will be displayed.
- Navigate to the folder in which you want to save the file.
- Enter a file name.
- Click **Save**.  
A window showing the download process will be displayed.  
A message will be displayed when the transfer is complete.
- Click **OK**.

The Hybrid IP-PBX can now be programmed for the customer.

## Section 3

# Upgrading a Hybrid IP-PBX from a Previous Version of System Software

To upgrade the system software of the Hybrid IP-PBX from a previous version while keeping the current user data, it is necessary to follow the procedure below.

## 3.1 Procedure

Before beginning the install procedure, make sure that Maintenance Consoles for both KX-TDA version 1.1 and 2.0 are installed to the PC.

### 1. Back up the current user data.

#### 1a. Back up the current DSYS system data file from the PBX to the SD Memory Card.

##### 1. Connect to the PBX using KX-TDA Maintenance Console.

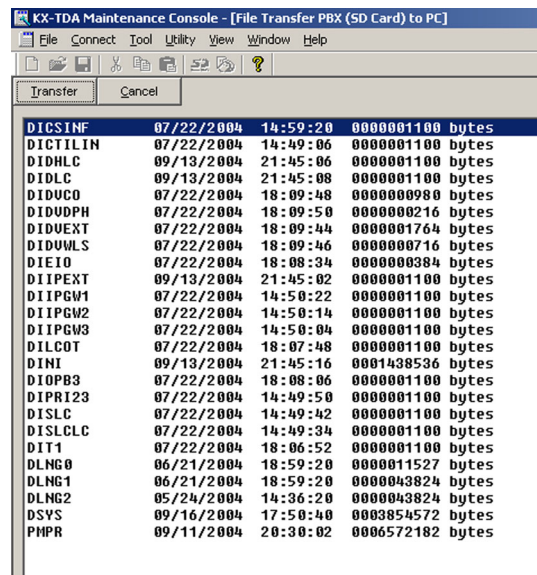
The appropriate version of KX-TDA Maintenance Console will be selected automatically.

##### 2. From the **Tool** menu, select **SD memory backup**.

The current DSYS system data file will be copied from the PBX to the SD Memory Card.

#### 1b. Copy the current DSYS from the SD Memory Card to the PC.

##### 1. From the **Utility** menu, select **File Transfer PBX (SD Card) to PC**.



The screenshot shows the 'KX-TDA Maintenance Console - [File Transfer PBX (SD Card) to PC]' window. The window has a menu bar with 'File', 'Connect', 'Tool', 'Utility', 'View', 'Window', and 'Help'. Below the menu bar is a toolbar with various icons. The main area of the window displays a list of files being transferred, with columns for filename, date, time, size, and unit. The list includes files like DICSINF, DICTILIN, DIDHLC, DIDLC, DIDUCO, DIDUDPH, DIDUEXT, DIDUWLS, DIEIO, DIIPEXT, DIIPGW1, DIIPGW2, DIIPGW3, DILCOT, DINI, DIOPB3, DIPRI23, DISLC, DISLCLC, DIT1, DLNG0, DLNG1, DLNG2, DSYS, and PMPR.

Filename	Date	Time	Size	Unit
DICSINF	07/22/2004	14:59:20	0000001100	bytes
DICTILIN	07/22/2004	14:49:06	0000001100	bytes
DIDHLC	09/13/2004	21:45:06	0000001100	bytes
DIDLC	09/13/2004	21:45:08	0000001100	bytes
DIDUCO	07/22/2004	18:09:48	0000000980	bytes
DIDUDPH	07/22/2004	18:09:50	0000000216	bytes
DIDUEXT	07/22/2004	18:09:44	0000001764	bytes
DIDUWLS	07/22/2004	18:09:46	0000000716	bytes
DIEIO	07/22/2004	18:08:34	0000000384	bytes
DIIPEXT	09/13/2004	21:45:02	0000001100	bytes
DIIPGW1	07/22/2004	14:50:22	0000001100	bytes
DIIPGW2	07/22/2004	14:50:14	0000001100	bytes
DIIPGW3	07/22/2004	14:50:04	0000001100	bytes
DILCOT	07/22/2004	18:07:48	0000001100	bytes
DINI	09/13/2004	21:45:16	001438536	bytes
DIOPB3	07/22/2004	18:08:06	0000001100	bytes
DIPRI23	07/22/2004	14:49:50	0000001100	bytes
DISLC	07/22/2004	14:49:42	0000001100	bytes
DISLCLC	07/22/2004	14:49:34	0000001100	bytes
DIT1	07/22/2004	18:06:52	0000001100	bytes
DLNG0	06/21/2004	18:59:20	0000011527	bytes
DLNG1	06/21/2004	18:59:20	0000043824	bytes
DLNG2	05/24/2004	14:36:20	0000043824	bytes
DSYS	09/16/2004	17:50:40	0003854572	bytes
PMPR	09/11/2004	20:30:02	0006572182	bytes

2. Select **DSYS** from the list of files.
  3. Click **Transfer**.

The Save dialog box will be displayed.
  4. Navigate to the folder in which you want to save the file.
  5. Enter a file name.
  6. Click **Save**.

A window showing the download process will be displayed.  
A message will be displayed when the transfer is complete.
  7. Click **OK**.
  8. From the **File** menu, select **eXit**.
  9. Click **OK**.

The KX-TDA Maintenance Console software will close. This step is necessary to switch to the current version of KX-TDA Maintenance Console.
- 
2. Upgrade the current user data.
    - 2a. Convert the current DSYS file for use with the new version.
      1. Start KX-TDA Maintenance Console. (Do not connect to the PBX.)

The appropriate version of KX-TDA Maintenance Console will be selected automatically.
      2. From the **File** menu, select **Open**.

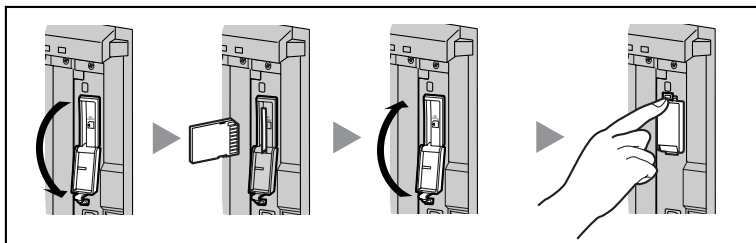
The Open dialog box will be displayed.
      3. Navigate to the folder in which you saved the DSYS file in Step 1.
      4. Select the file.
      5. Click **Open**.

A dialog box will appear to confirm that you want to convert the data.
      6. Click **Yes**.
      7. Enter a name for the new converted system file.

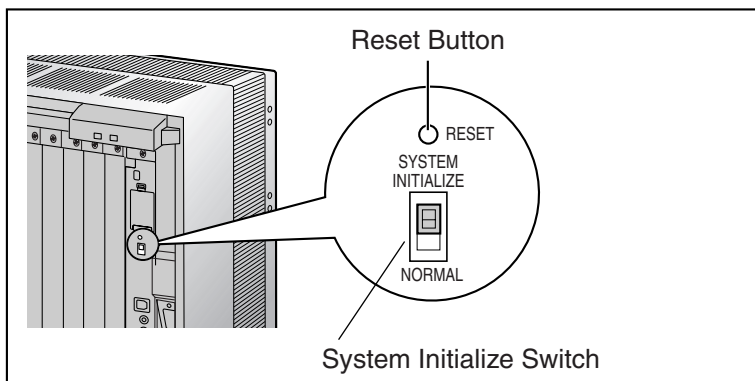
The DSYS file will be converted for compatibility with the new version of KX-TDA Maintenance Console, saved, and opened.
      8. From the **File** menu, select **Close**, to close the currently open system file.
- 
3. Set up the new system version.
    - 3a. Install the new SD Memory Card, KX-TDA0920.
      1. Turn off the power to the PBX.
      2. Remove the current SD Memory Card from the SD Memory Card slot.



3. Install the new SD Memory Card.



4. Set the System Initialize Switch to the "SYSTEM INITIALIZE" position.



5. Turn on the power to the PBX.
6. While the RUN indicator is flashing, return the System Initialize Switch to the "NORMAL" position.

### 3b. Run Quick Setup.

1. Connect to the PBX using KX-TDA Maintenance Console.  
Quick Setup will restart automatically.
2. Set the data items as prompted.

Quick Setup will finish.

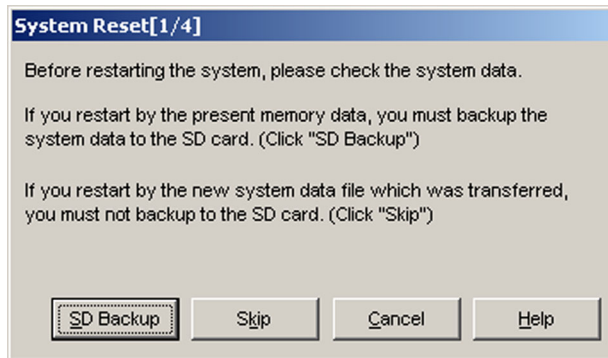
If the contents of the SD Memory Card have not been previously backed up to the PC using an SD Memory Card Reader, it is strongly recommended to back up the DKEYSD file now. To do so, follow the procedure below.

- a. From the **Utility** menu, select **File Transfer PBX (SD Card) to PC**.
- b. Select **DKEYSD** from the list of files.
- c. Click **Transfer**.  
The Save dialog box will be displayed.
- d. Navigate to the folder in which you want to save the file.
- e. Enter a file name.
- f. Click **Save**.  
A window showing the download process will be displayed.  
A message will be displayed when the transfer is complete.
- g. Click **OK**.

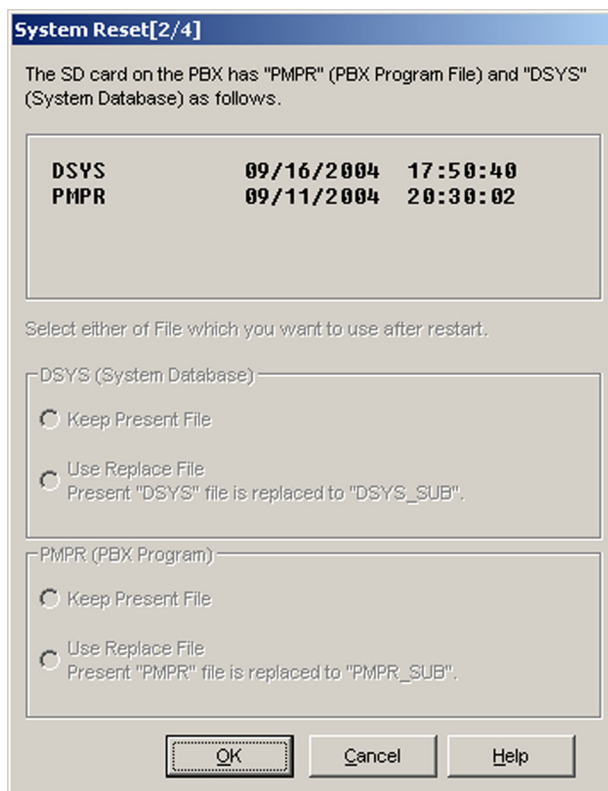
4. Restore the user data.

- 4a. Transfer the DSYS file that was converted in Step 2 from the PC to the SD Memory Card.

1. From the **Utility** menu, select **File Transfer PC to PBX (SD Card)**.  
The Open dialog box will be displayed.
  2. Select the converted DSYS file that was saved in Step 2.  
The file will be uploaded to the SD Memory Card as the backup DSYS file (DSYS\_SUB), and a message displayed when the transfer is complete.
  3. Click **OK**.
- 4b.** Set the transferred DSYS file to be the active DSYS file.
1. From the **Utility** menu, point to **System Reset** and then click **Reset by the Command**.



2. Select **Skip** to continue without backing up current data to the SD Memory Card.



3. Select **Use Replace File** for DSYS and **Keep Present File** for PMPR.
4. Click **OK**.  
A confirmation screen will be displayed.
5. Click **OK**.

Another confirmation screen will be displayed.

**6.** Click **OK**.

The DSYS and backup DSYS files will be swapped, and the PBX reset.

The upgrade process is complete.

# 3.2 Data Reset After Upgrade

Data that is stored in the SRAM of the Hybrid IP-PBX (not on the SD Memory Card) is cleared during the upgrade process.

The data items listed below are all cleared by upgrade.

- Incoming Call Log
- Outgoing Call Log (including Last Number Redial)
- Message Waiting
- SMDR
- ICD Group monitor log for supervisor
- PBX date and time
- Timed Reminder
- LPR Timed Update time
- Daily test start time
- PT handset/headset volume
- PT SP-PHONE volume
- PT ring volume
- PT display contrast
- ICD Group login status  
(All extensions are set to Login by default.)
- ICD Group Ready/Not Ready status  
(All extensions are set to Ready by default.)
- Live Call Screening (LCS) On/Off
- Hands-free Answerback status
- Absent Message status of extensions  
(Absent Message data itself is not cleared.)
- FWD/DND status  
(FWD destinations are not cleared.)
- Extension Lock/Remote Extension Lock
- Extension PIN Lock/Extension PIN Lock counter
- Verified Code PIN Lock/Verified Code PIN Lock counter
- Password Lock counter for Remote System Programming
- PBX Error Log

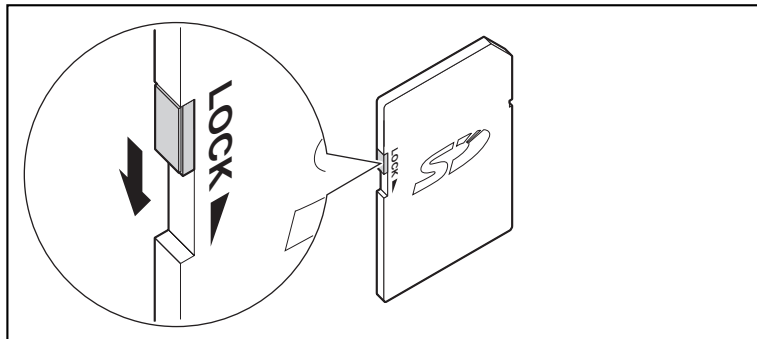
## Section 4

# Restoring a Hybrid IP-PBX to a Previous System Version

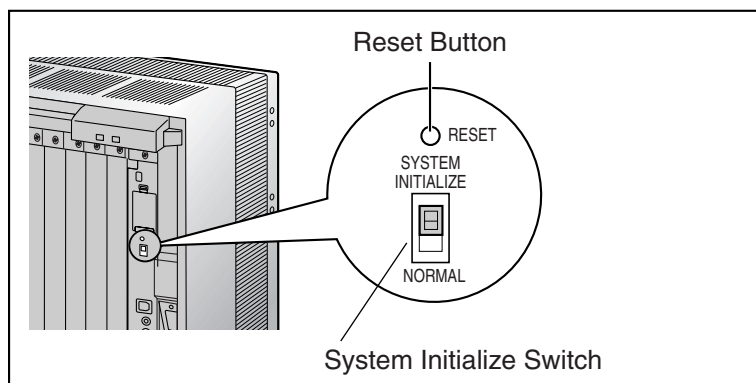
*The following procedure allows you to undo an upgrade and return to the previous version of system software and data. Use this procedure if the upgrade process did not complete successfully.*

## 4.1 Procedure

1. Turn off the power to the PBX.
2. Remove the new SD Memory Card that is currently installed in the PBX.
3. Set the lock switch of the previous SD Memory Card for read-only access.



4. Install the previous SD Memory Card in the SD Memory Card slot of the PBX.
5. Set the System Initialize Switch to the "SYSTEM INITIALIZE" position.

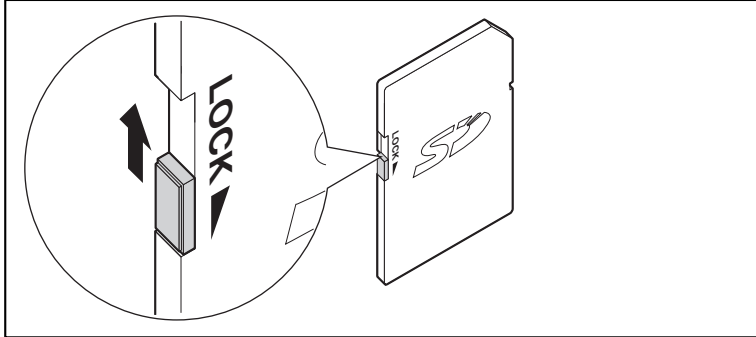


6. Turn on the power to the PBX.

## 4.1 Procedure

---

7. While the RUN indicator is flashing, turn the System Initialize Switch to the "NORMAL" position. Initialization may take about 1 min to 3 min. When completed, the RUN indicator will stop flashing and turn on.
8. Turn off the power to the PBX again.
9. Remove the SD Memory Card from the PBX, and set the lock switch for read/write access.



10. Turn on the power to the PBX.  
The previous version's DSYS file will be copied from the SD Memory Card to the PBX.

The Hybrid IP-PBX has been restored to the previous version.

Please note that the data listed in "3.2 Data Reset After Upgrade" will not be restored by this procedure.



**Panasonic Consumer Electronics Company  
Division of Panasonic Corporation of North America**

One Panasonic Way  
Secaucus, NJ 07094

**Panasonic Puerto Rico, Inc.**

Ave. 65 de Infantería, Km. 9.5  
San Gabriel Industrial Park  
Carolina, Puerto Rico 00985

**<http://www.panasonic.com/csd>**

**Copyright:**

This material is copyrighted by Panasonic Communications Co., Ltd., and may be reproduced for internal use only. All other reproduction, in whole or in part, is prohibited without the written consent of Panasonic Communications Co., Ltd.

© 2005 Panasonic Communications Co., Ltd. All Rights Reserved.