

SECTION VII
ILLUSTRATIONS

HIGH VOLTAGE SUPPLY

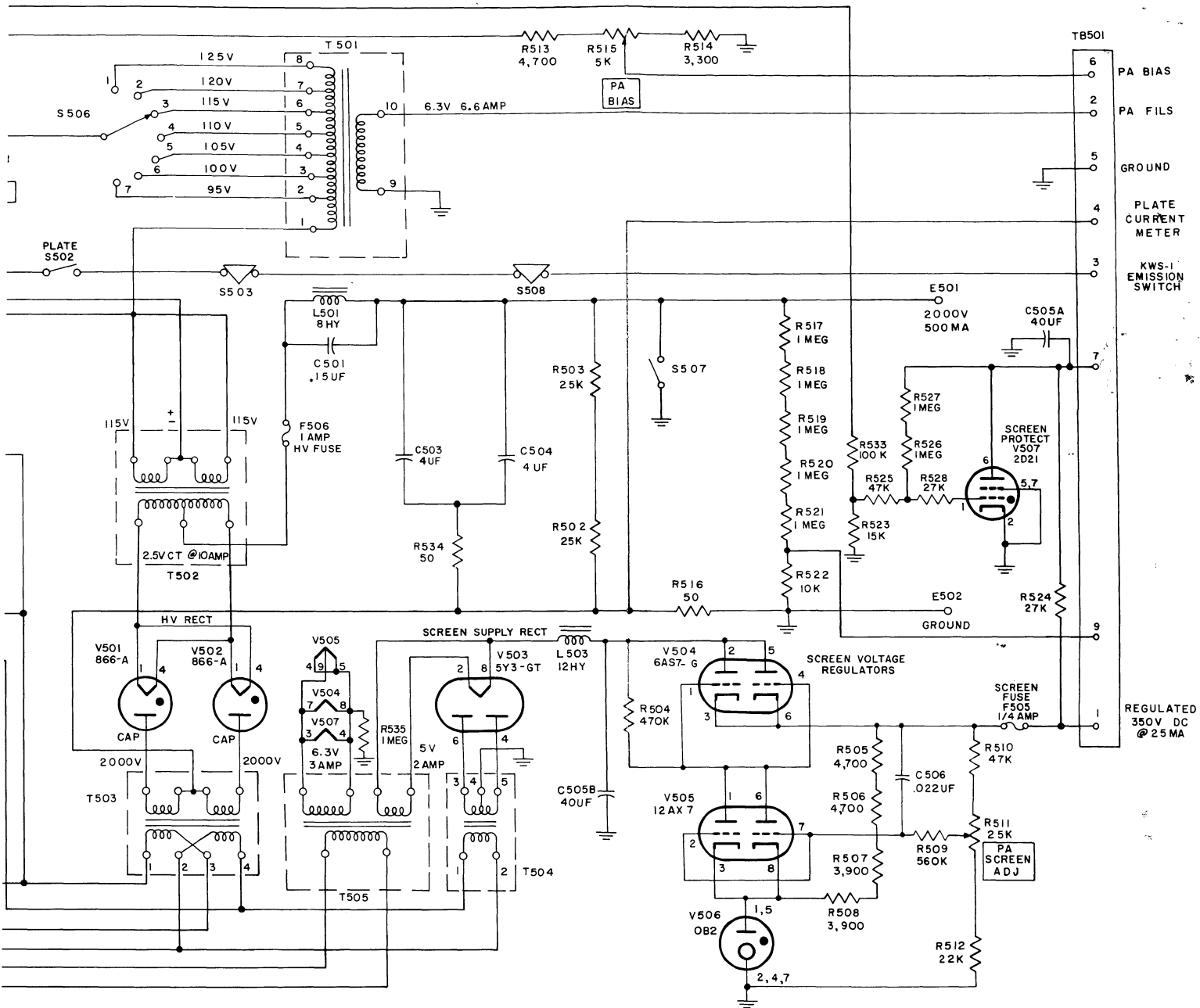
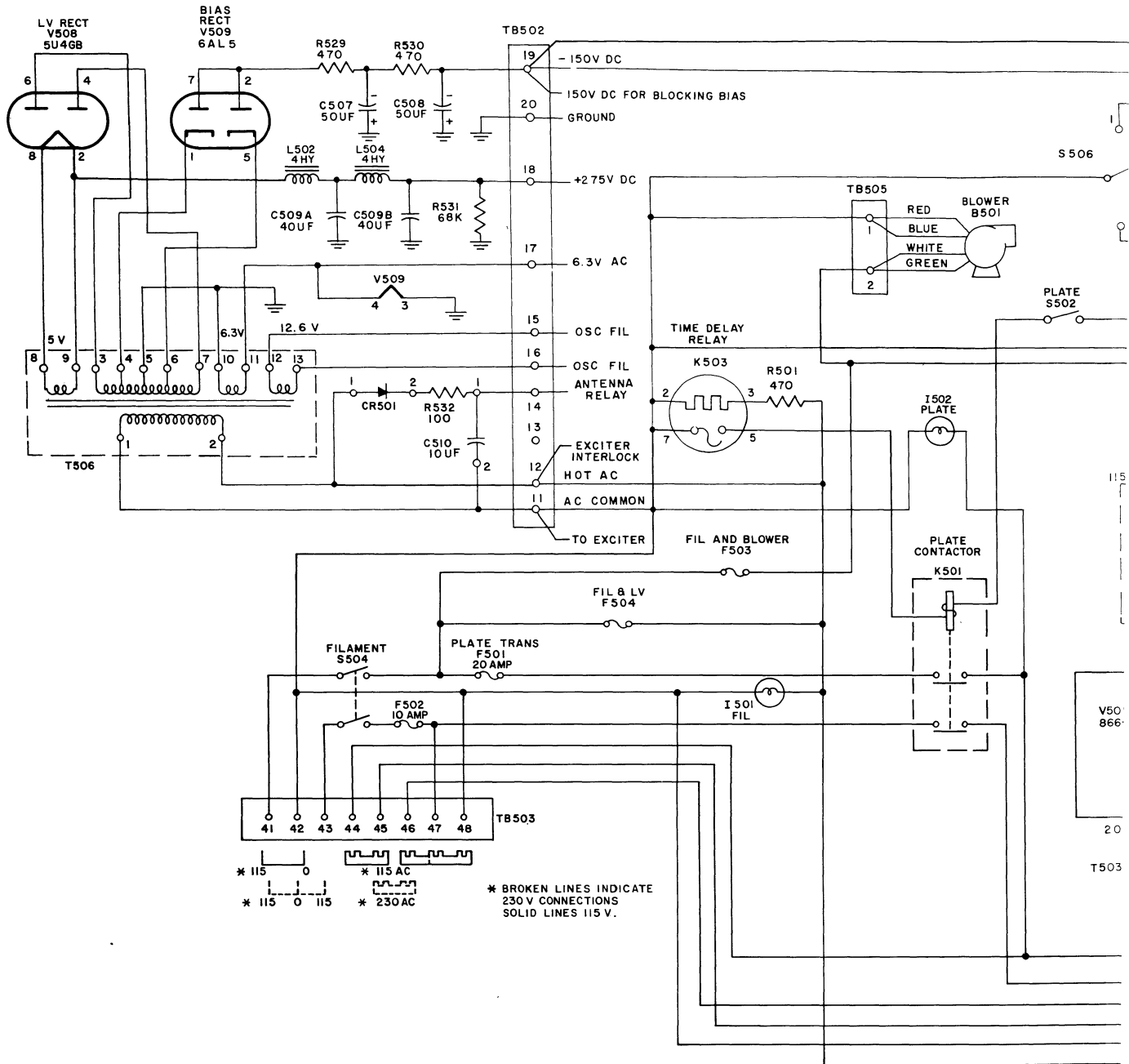


Figure 7-2. Power Supply, Complete Schematic Diagram

LOW VOLTAGE AND BIAS SUPPLY



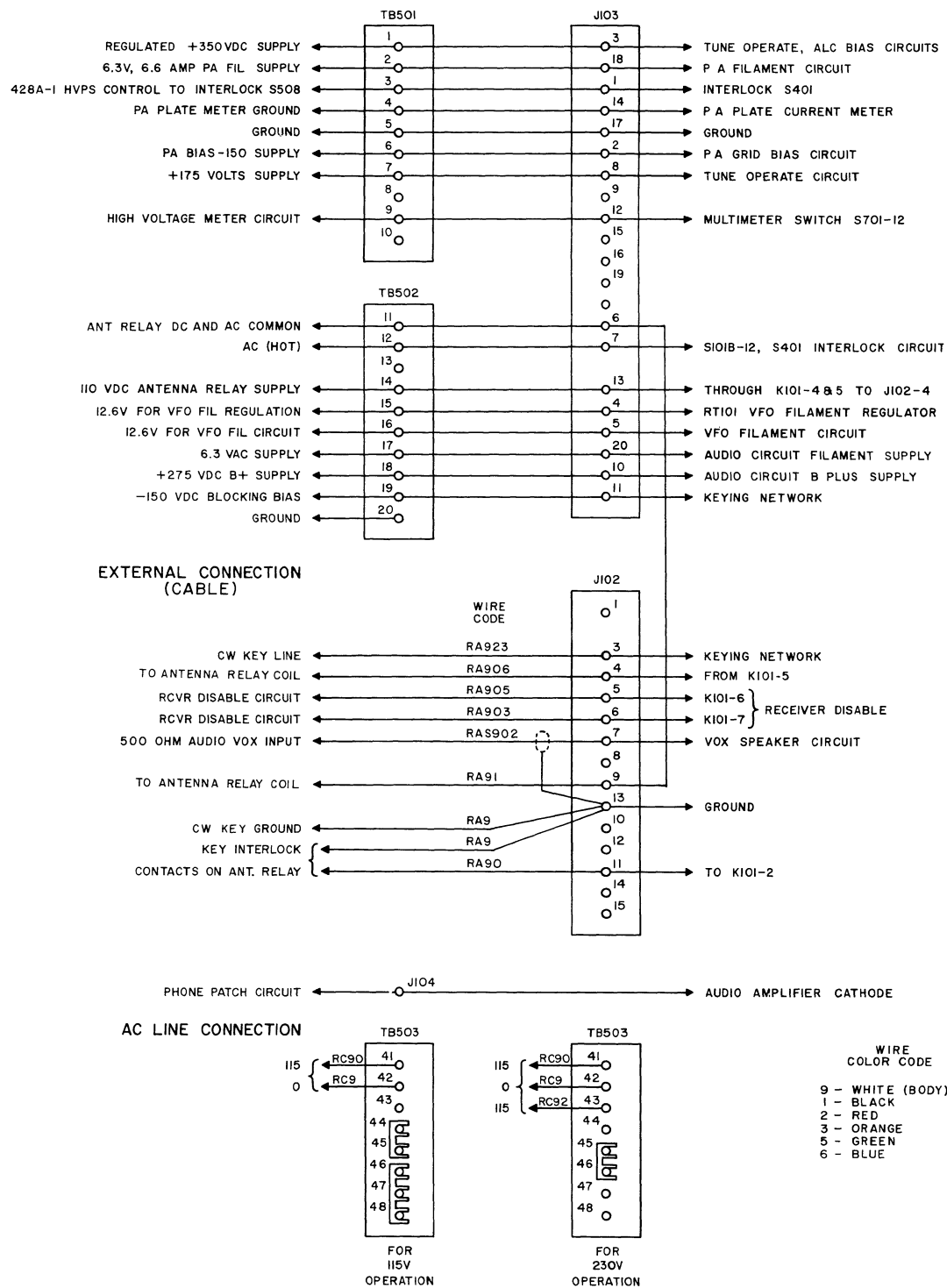
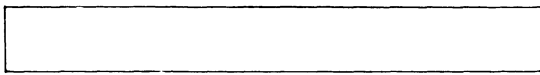
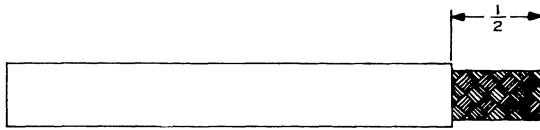


Figure 7-3. Interconnecting Cable Wiring Diagram

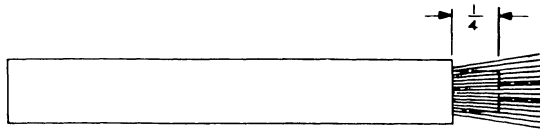
Section VII



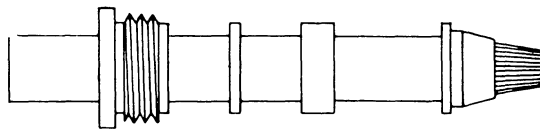
CUT END OF CABLE EVEN.



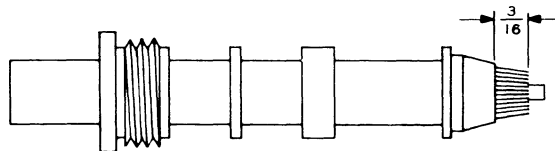
REMOVE VINYL JACKET $\frac{1}{2}$ INCH —
DON'T NICK BRAID.



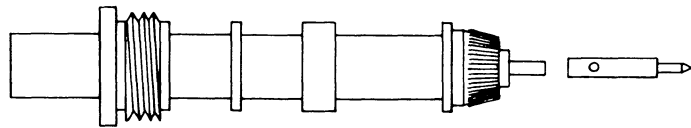
COMB OUT COPPER BRAID AS SHOWN.
BARE $\frac{1}{4}$ INCH OF CENTER CONDUCTOR—
DON'T NICK CONDUCTOR.



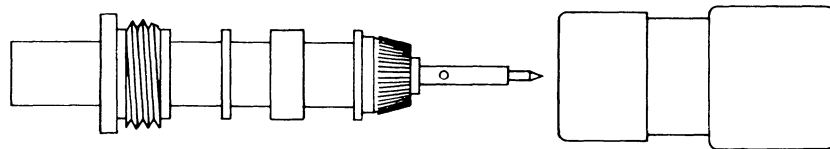
TAPER BRAID AS SHOWN. SLIDE NUT,
WASHER AND GASKET ON VINYL JACKET.
SLIDE CLAMP ON BRAID.



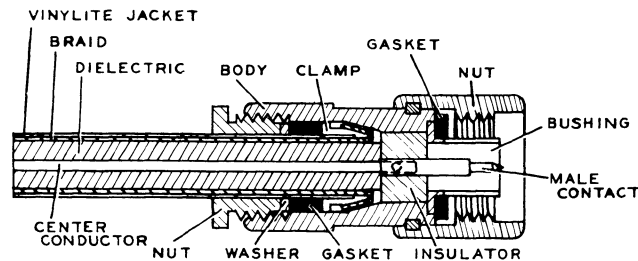
WITH CLAMP IN PLACE, TRIM BRAID
AS SHOWN.



FOLD COPPER BRAID BACK ON CLAMP.
TIN CENTER CONDUCTOR,
USING MINIMUM AMOUNT OF
HEAT.



HOLDING CONTACT WITH PLIERS,
SOFT SOLDER CONTACT TO
CENTER CONDUCTOR. IT IS
IMPERATIVE THAT BACK END
OF CONTACT BE FLUSH WITH
POLYETHYLENE DIELECTRIC. DO
NOT USE EXCESS SOLDER. WIPE
CLEAN—SEE THAT END OF
CABLE INSULATOR IS CLEAN
AND FREE OF SOLDER, ROSIN
AND FOREIGN MATERIAL.



SLIDE BODY INTO PLACE CAREFULLY SO
THAT CENTER CONDUCTOR ENTERS HOLE
IN INSULATOR. FACE OF CABLE DIE-
LECTRIC MUST FIT FLUSH AGAINST IN-
SULATOR. PROPERLY TIGHTEN BODY
AND NUT WITH WRENCHES.

NOTES: 1. THIS ASSEMBLY PROCEDURE APPLIES
TO TYPE N PLUGS. THE PROCEDURE
FOR JACKS IS THE SAME EXCEPT
FOR THE USE OF A FEMALE CONTACT
AND A JACK BODY.

Figure 7-4. RG-8/U Cable Assembly to Connectors

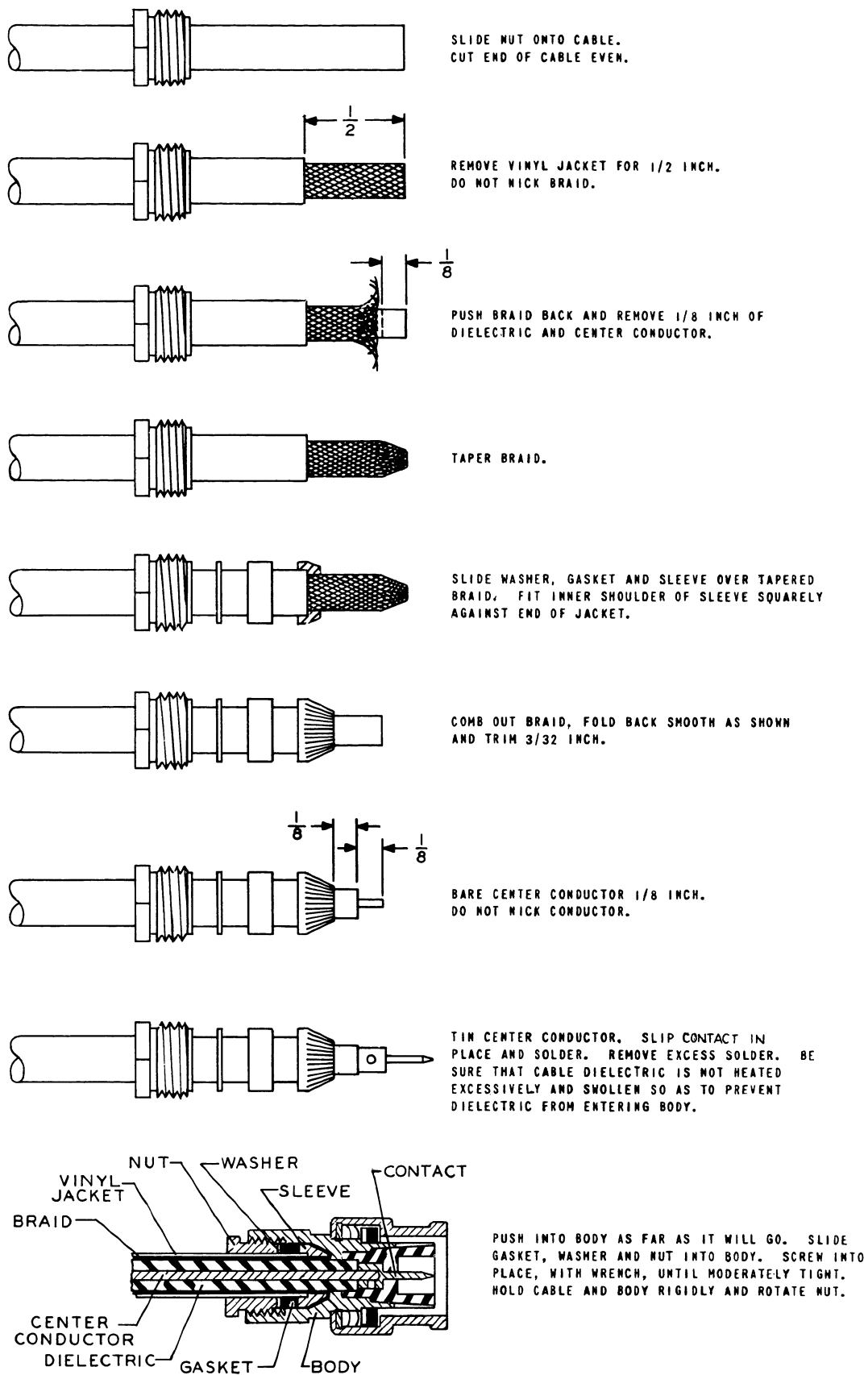


Figure 7-5. RG-58/U Cable Assembly to Connectors

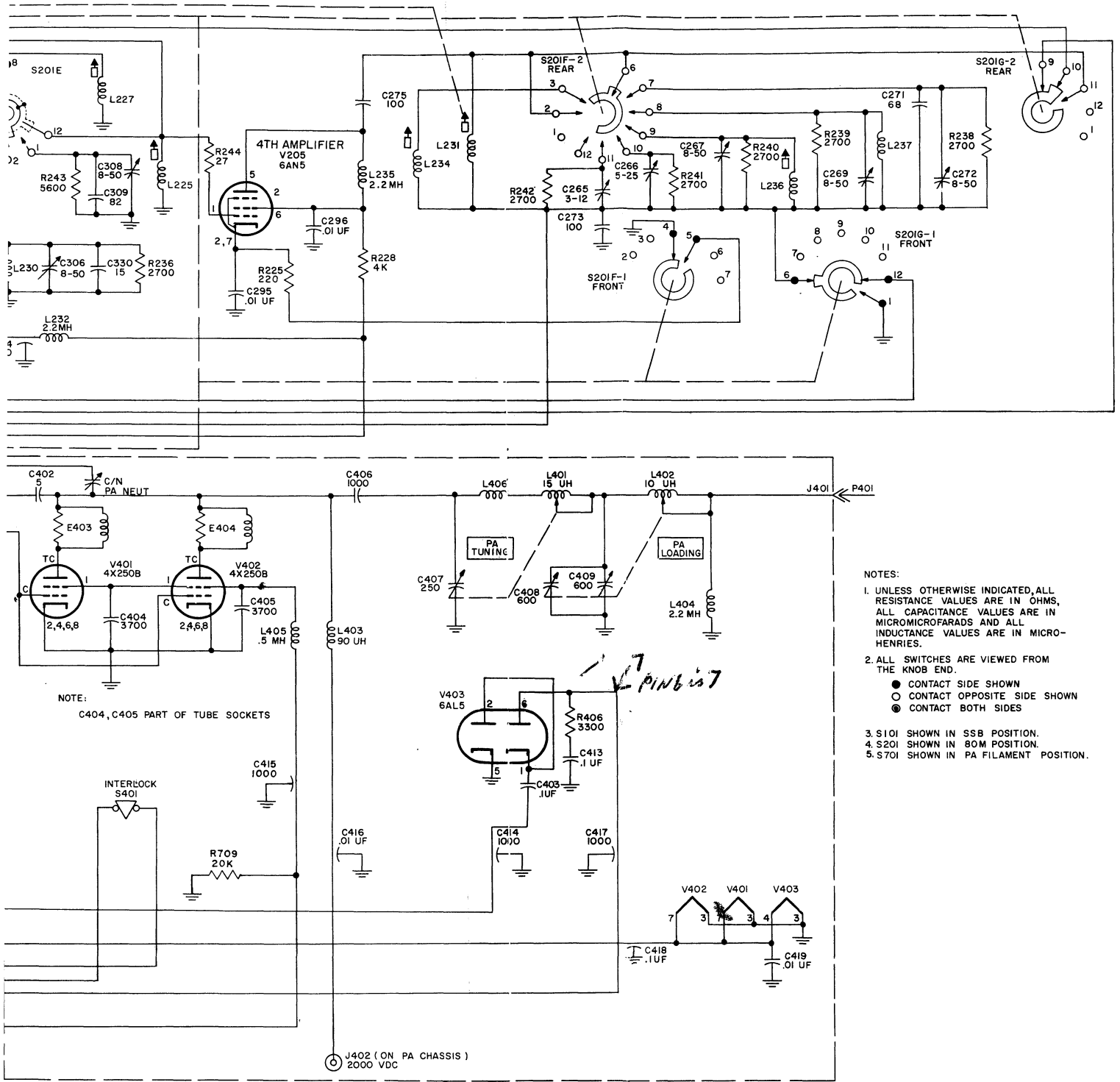
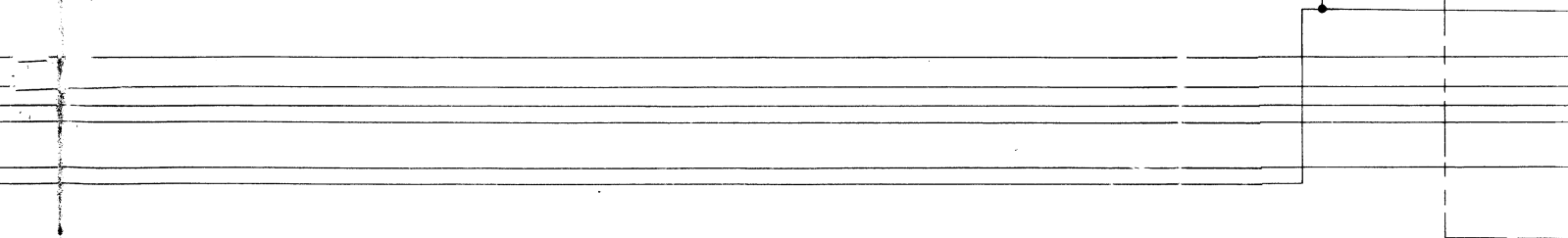
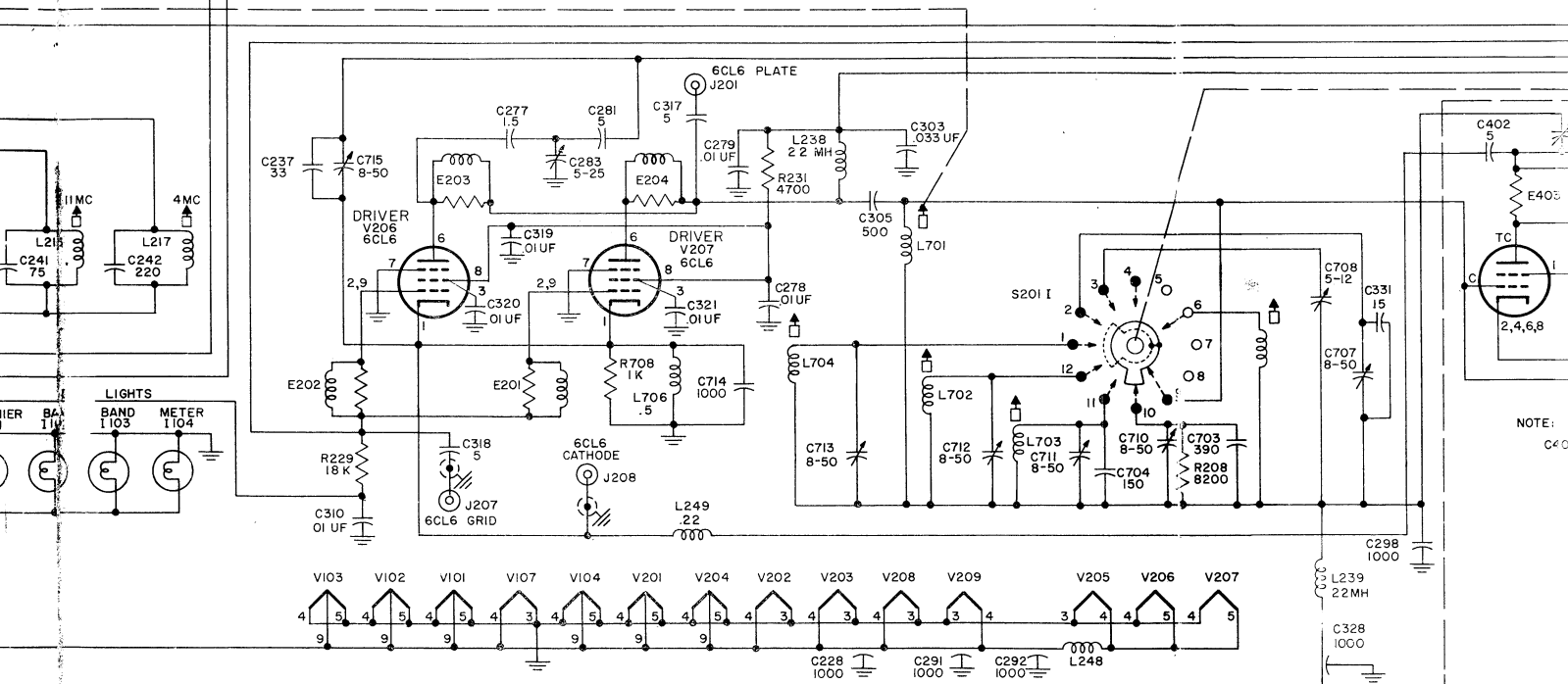
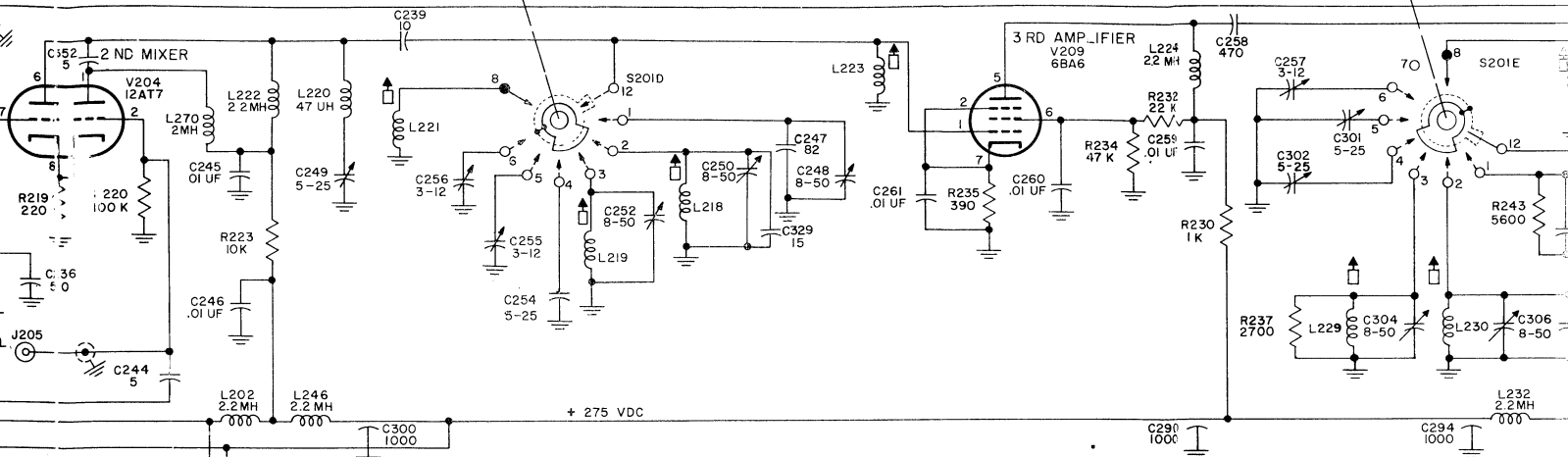
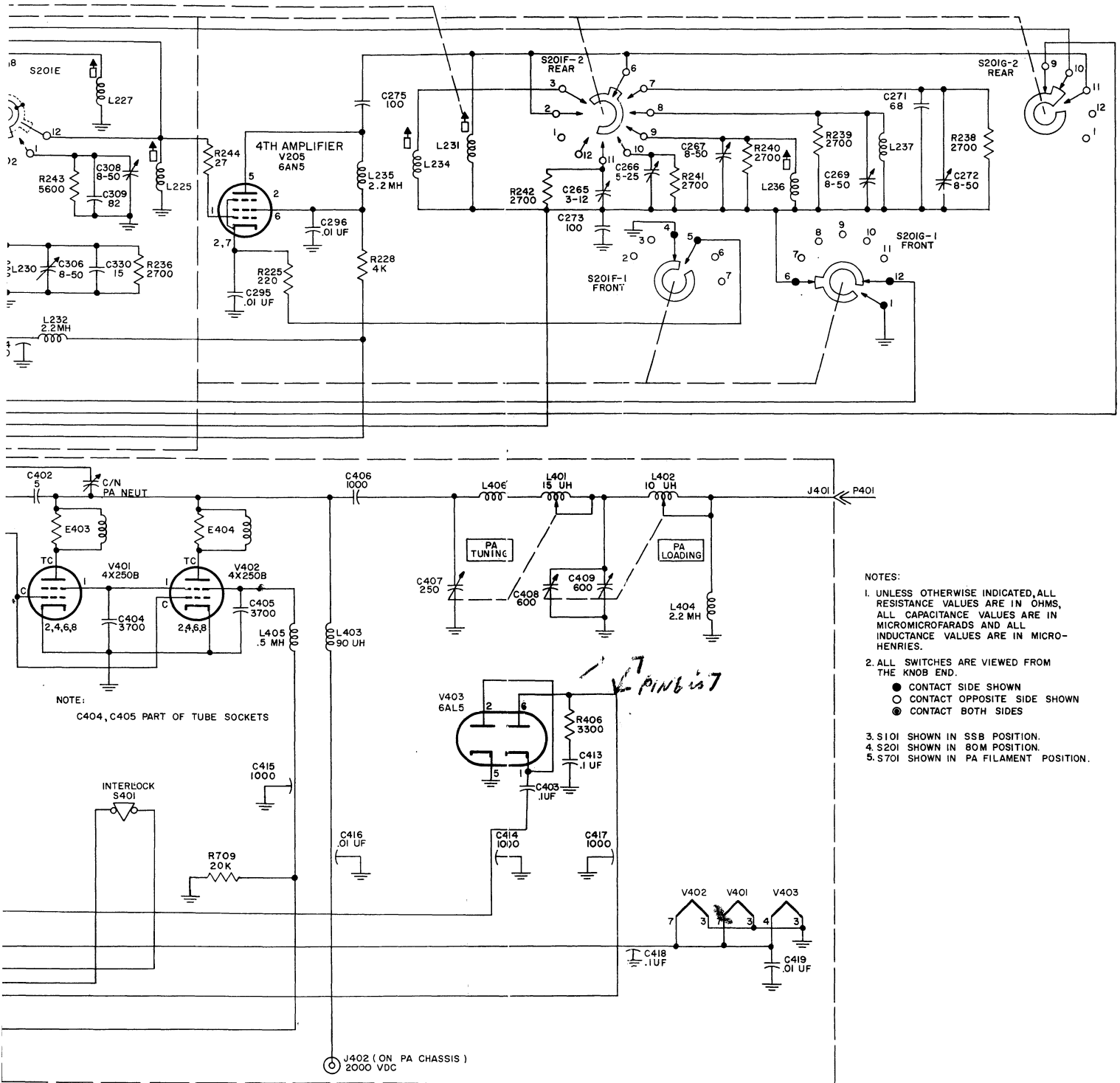


Figure 7-1. Exciter/Power Amplifier, Complete Schematic Diagram

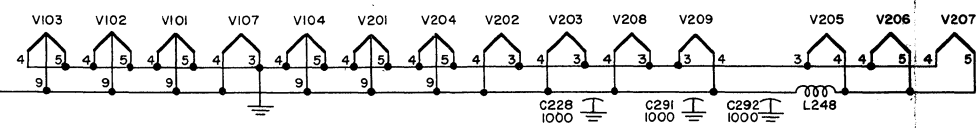
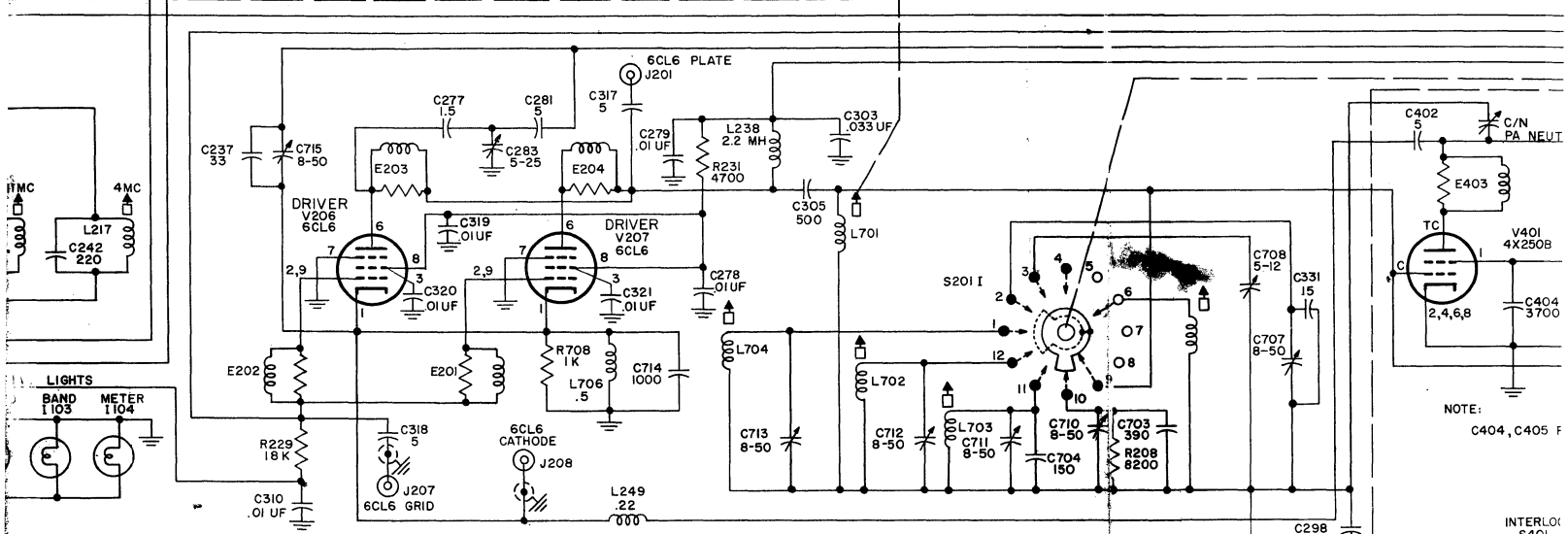
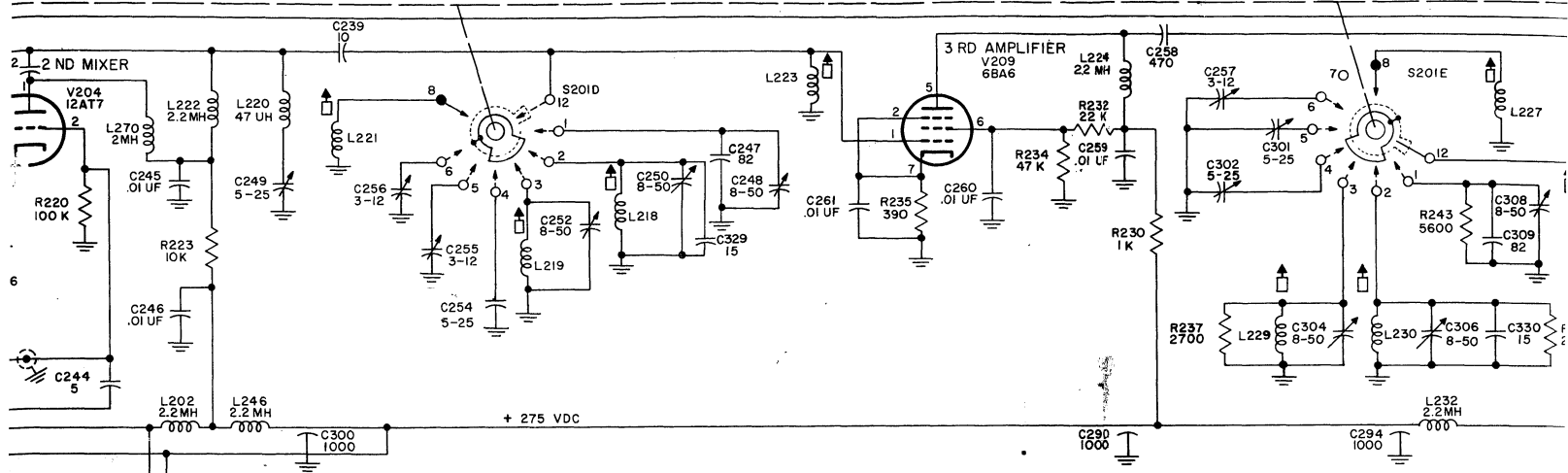


NOTE: C40



- NOTES:
1. UNLESS OTHERWISE INDICATED, ALL RESISTANCE VALUES ARE IN OHMS, ALL CAPACITANCE VALUES ARE IN MICROMICROFARADS AND ALL INDUCTANCE VALUES ARE IN MICROHENRIES.
 2. ALL SWITCHES ARE VIEWED FROM THE KNOB END.
 - CONTACT SIDE SHOWN
 - CONTACT OPPOSITE SIDE SHOWN
 - ◐ CONTACT BOTH SIDES
 3. S101 SHOWN IN SSB POSITION.
 4. S201 SHOWN IN 80M POSITION.
 5. S701 SHOWN IN PA FILAMENT POSITION.

Figure 7-1. Exciter/Power Amplifier, Complete Schematic Diagram



INTERLOCK
 S401

