



Defrost Mesh Grille Update

Classification	Repair Bulletin	Section/Group	14 - Instrument Panel & Pedals	Country/Region	United States
Year	2012-2013	Model	Model S	Version	All

Bulletin Classification: This repair bulletin provides instructions and guidelines for a noted condition or a customer concern. The information provided can address a broad range of known or perceived issues with the operation of Tesla vehicles. This bulletin might not be VIN-specific. These instructions assume knowledge of motor vehicle and high voltage electricity repairs, and should only be executed by trained professionals. Tesla Motors assumes no liability for injury or property damage due to a failure to properly follow these instructions or repairs attempted by unqualified individuals.

This Service Bulletin supersedes SB-13-14-001 R3, dated 22-Jan-2014. Each content change is marked by a vertical line in the left margin. Discard the previous version and replace it with this one.

Condition

An updated defrost mesh grille is available. The original design meets all federal standards for defrosting the windshield promptly, but the updated grille improves windshield clearing performance in the edges near the LH and RH A-Pillars.

Correction

Upon customer complaint, replace the defrost mesh grille with the updated part (Figure 1).

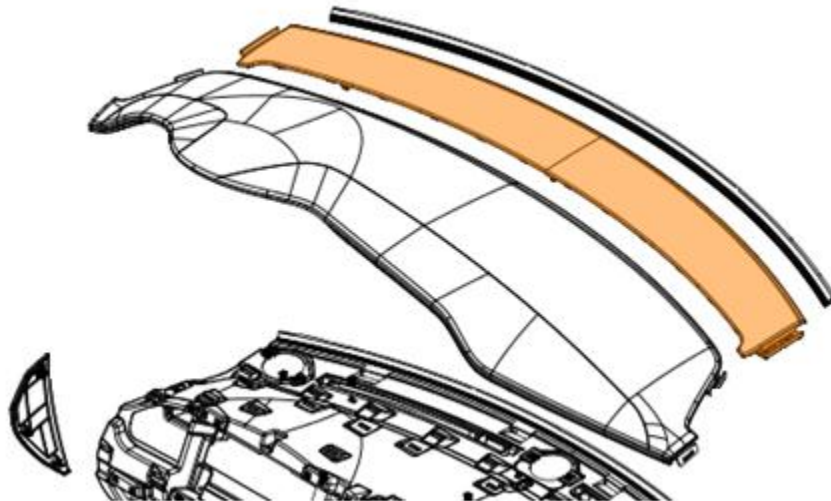


Figure 1

Required Part(s):	Part Number	Description	Quantity
	1023272-00-A	DEFROSTER BEZEL OUTLET LH	1
	1023273-00-A	DEFROSTER BEZEL OUTLET RH	1
	1023274-00-A	DEFROSTER BEZEL BRIDGE	6
	1009344-00-A	SCR PT TRX WSHR M4X1.46-12 ZNBLUE	6
	1023745-00-A	LASER CUT MESH GRILLE DEFROST	1
	1007167-00-B	SEAL MESH DEFROST	2

These part numbers were current at the time of publication. Use the revisions listed or later, unless otherwise specified in the Parts Manual.

Correction Description	Correction	Time
Vehicle Inspection, Parts Already Upgraded	S011314001	0.1
Replace Defrost Mesh Grille	S021314002	1.8

Procedure

1. Inspect the defrost mesh grille that is inside the vehicle. If the grille has vents that direct air toward the A-Pillars (Figure 2), then the new grille is already installed and no more work is needed.

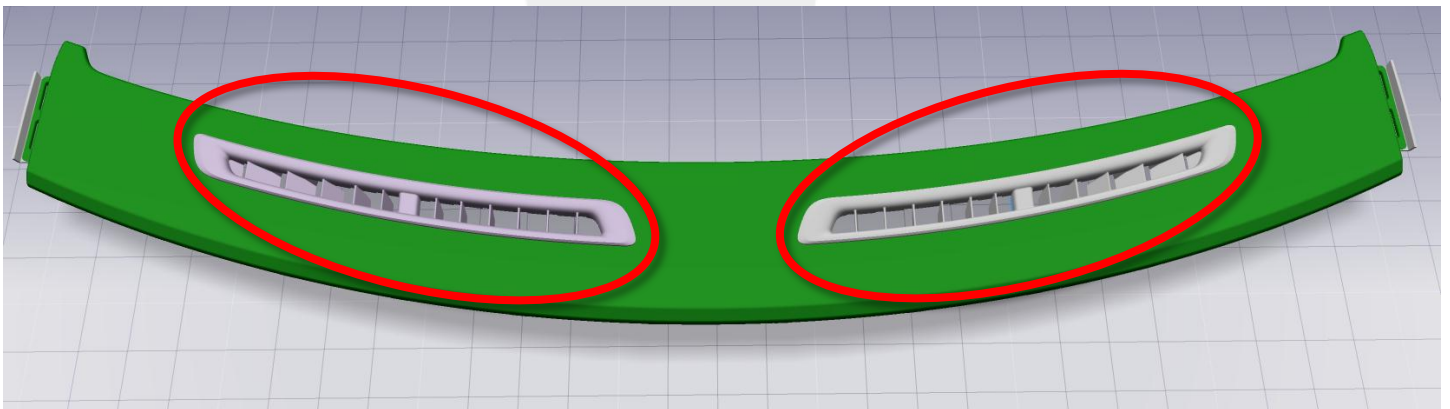


Figure 2

2. Place a fender cover, towel, or other soft material on a workbench.
3. Position the new grille upside down onto the workbench.

4. Inspect the underside of the new defrost mesh grille. If the risers on each side of the 4 retaining clips are covered with foam tape, skip to the next step. If not, cover each of the 8 risers with foam tape (Figures 3 and 4).



Figure 3

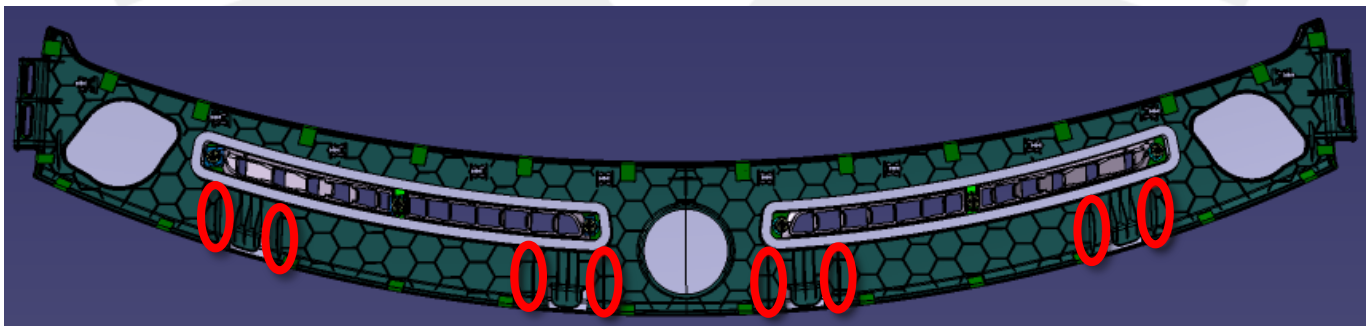


Figure 4

5. Turn the grille over so that the top side faces up.
6. Insert the RH bezel into the RH cutout of the grille (Figure 5).



Figure 5

7. While holding the bezel in place, turn the grille over so that it is upside down with the metal trim clips facing forward.

8. Position a bezel bridge over the hole on the inboard side of the bezel. Screw the bezel bridge into the bezel (torque 2 Nm).

NOTE: It might be necessary to angle the bezel bridge in order to make it fit securely (Figure 6).



Figure 6

9. Repeat step 8 for the holes in the center and outboard side of the bezel.
10. Ensure that the bezel is seated firmly in the new grille.
11. Remove the adhesive backing from one of the foam seals. Secure the seal around the cutout in the grille (Figure 7). Ensure that the seal covers the edges of the bezel bridges (Figure 8).

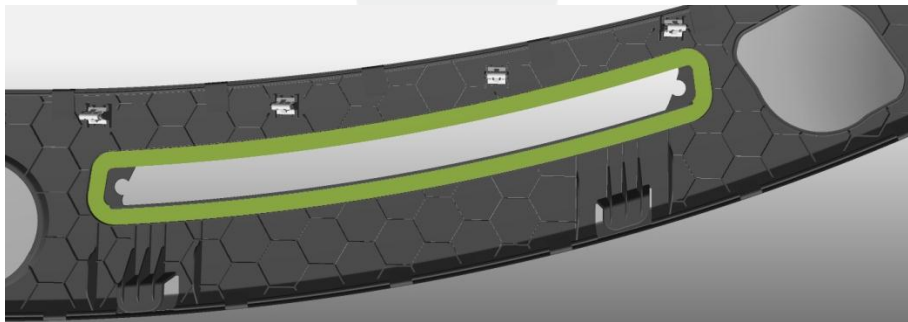


Figure 7 (Shown with bezel and spacers removed for clarity)

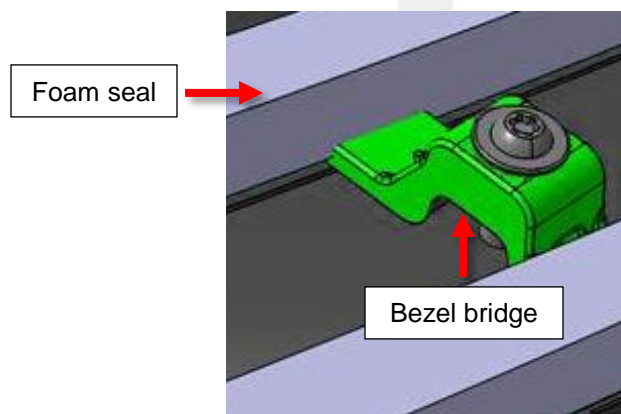


Figure 8 (Shown with bezel removed for clarity)

12. Repeat steps 5–11 for the LH bezel.

NOTE: The new defrost grille is now fully assembled.

13. Remove the old defrost grille from the vehicle (refer to the “Remove” section of Service Manual procedure 14054702).

14. Install the new defrost grille (refer to the “Installation” section of Service Manual procedure 14054702).

NOTE: Ensure that the passenger airbag is properly reconnected when reinstalling the top pad (refer to the “Installation” section of Service Manual procedure 14054801).

Affected VIN(s) Affected Model S vehicles built through approximately July 1, 2013.

NOTE: This is a simplified summary of the affected VIN list. Refer to the VIN/Bulletin Tracker or Customer/Vehicle Profile to determine applicability of this bulletin for a particular vehicle.

For feedback on the accuracy of this document, email ServiceBulletinFeedback@teslamotors.com.