



Brake Rotor Update to Reduce Noise

Classification Repair Bulletin **Section/Group** 33 - Brakes **Country/Region** All

Year All **Model** Model S **Version** All

Bulletin Classification: *This repair bulletin provides instructions and guidelines for a noted condition or a customer concern. The information provided can address a broad range of known or perceived issues with the operation of Tesla vehicles. This bulletin might not be VIN-specific. These instructions assume knowledge of motor vehicle and high voltage electricity repairs, and should only be executed by trained professionals. Tesla Motors assumes no liability for injury or property damage due to a failure to properly follow these instructions or repairs attempted by unqualified individuals.*

This Service Bulletin supersedes SB-13-33-001 R1, dated 21-Oct-13. Each content change is marked by a vertical line in the left margin. Discard the previous version and replace it with this one.

Condition

Some vehicles with 21 inch wheels exhibit a “moan” noise under light braking due to a vibration in the brake rotors. The noise is heard immediately before the vehicle comes to a complete stop. Brake performance is not adversely affected by this noise; however, customers might consider the “moan” annoying.

Correction

Upon customer complaint, install updated service front rotors. Do not replace the brake pads unless they are near the minimum allowable thickness (2 mm).

Required Part(s):	Part Number	Description	Quantity
	1025099-00-A	FR BRAKE ROTOR W/ AS-CAST OUTER HAT	2
Correction Description		Correction	Time
Vehicle Inspection Only; Brake Rotor Replacement Not Required		S011333001	0.1
Replace LF and RF Brake Rotors		S021333001	0.7

Procedure

NOTE: Perform this procedure on vehicles with 21 inch wheels only. The noise that is eliminated by this procedure is caused by an interaction between the 21 inch wheels and the standard front rotors.

1. Check the design of the front rotors by looking through the openings in one of the front wheels. The standard front rotors have a smooth, machined finish on the hat (Figure 1). The service rotors have a rough, as-cast finish on the hat (Figure 2). Continue this procedure if the standard front rotors are installed.

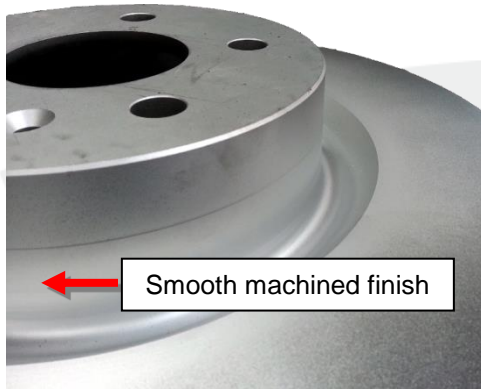


Figure 1 (Machined front rotor)

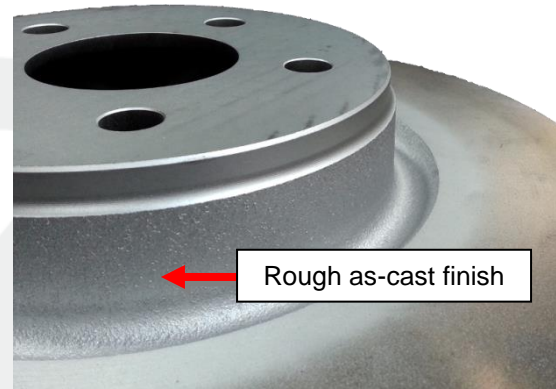



Figure 2 (As-cast front rotor)

2. Remove the existing front rotors (refer to Service Manual procedure 33010102).
3. Check the thickness of the front brake pads. The service limit for front brake pads is 2 mm. If the brake pads are close to the service limit, recommend front brake pad replacement to the customer for their convenience.

NOTE: The brake pads are not the cause of the noise; do not claim them under warranty.

4. Install 2 front rotors with as-cast outer hats.
5. Test drive the vehicle, making several light to moderate stops to check for proper brake operation. No special bed-in process is required unless the brake pads were replaced.

 The parts in this Service Bulletin are currently not required to be returned through the MRB program. Do not submit an MRB Parts Return claim; scrap these parts on site.

Affected VIN(s)

This information is for reference purposes only. This list is not intended to be the sole information source for updates.

5YJSA1DP8CFF00001 - 5YJSA1DP0CFF00042
5YJSA1DP6CFP01201 - 5YJSA1CP9CFP01999
5YJSA1CN9CFP02200 - 5YJSA1AG4DFP11800
5YJSA1CN7DFP12046 - 5YJSA2DP3DFP12292
5YJSA1CP8DFP12574 - 5YJSA2DP7DFP14174
5YJSA2DP1DFP14221 - 5YJSA1CP5DFP14749
5YJSA1DP4DFP14773 - 5YJSA2DP2DFP18410
5YJSA2DN0DFP18436 - 5YJSA2DN5DFP18450
5YJSA1CN4DFP18466 - 5YJSA2DN8DFP18491
5YJSA2DN4DFP18505
5YJSA2DP5DFP18580
5YJSA1CP9DFP18593
5YJSA1CN3DFP18605 - 5YJSA1CN0DFP18657
5YJSA2DP0DFP18678 - 5YJSA2CN5DFP18756
5YJSA1DP9DFP18785 - 5YJSA2DP2DFP19055
5YJSA2DN2DFP19068
5YJSA2DN3DFP19080
5YJSA2CN2DFP19122
5YJSA2CP3DFP19146 - 5YJSA2DP9DFP19148
5YJSA2DN3DFP19192
5YJSA2CP4DFP19205
5YJSA2CN4DFP19235
5YJSA2DN8DFP19236
5YJSA2CN6DFP19267
5YJSA2DP7DFP19309
5YJSA2CP8DFP19370
5YJSA2DN3DFP19418
5YJSA2DP4DFP19431
5YJSA2DNXDFP19433
5YJSA1DP7DFP19465 - 5YJSA1DN4DFP20720
5YJSA1CP3DFP20744 - 5YJSA1CG4DFP21191
5YJSA1CNXDFP21212
5YJSA1DP0DFP21252 - 5YJSA1CN3DFP21259
5YJSA1CN9DFP21282
5YJSA2DN9DFP21335
5YJSA1CN7DFP21393
5YJSA2DN2DFP21399
5YJSA1DP5DFP21425 - 5YJSA1CPXDFP21888
5YJSA1DP6DFP21904 - 5YJSA1DN7DFP22042
5YJSA1CN6DFP22275
5YJSA1CNXDFP22294 - 5YJSA1DP3DFP22475
5YJSA2DP4DFP22491 - 5YJSA1CN0DFP22496
5YJSA1CG7DFP22514 - 5YJSA1CPXDFP22586
5YJSA1CN4DFP22615 - 5YJSA1CP9DFP22630
5YJSA1CN8DFP22648 - 5YJSA2DP0DFP22696
5YJSA1CP1DFP22962 - 5YJSA2DN9DFP22999
5YJSA1CN9DFP23016 - 5YJSA1DP5DFP23028
5YJSA1CNXDFP23073
5YJSA1CN4DFP23103 - 5YJSA1DP9DFP23114
5YJSA1DP2DFP23133
5YJSA1CG0DFP23150 - 5YJSA1CN4DFP23151
5YJSA1CGXDFP23527
5YJSA1CN7DFP23595
5YJSA1DN0DFP23615 - 5YJSA1CG0DFP23620
5YJSA1AP7CFR00102 - 5YJSA1AP9CFR00117
5YJSA1DP2CFS00001 - 5YJSA1DPXCFS00277
5YJSA1DP6CFS00292 - 5YJSA1DPXCFS00294
5YJSA1DN0CFS00352

5YJSA1DN2CFS00367 - 5YJSA1DN4CFS00368
5YJSA1DP8CFS00407 - 5YJSA1DP9CFS00416
5YJSA1DP7CFS00429 - 5YJSA1DP0CFS01096
5YJSA1DP1CFS02001 - 5YJSA1DP9CFS02120
5YJSA1DP3DFS07475
5YJSA2DP0DFS13045 - 5YJSA2DP8DFS13049
5YJSA2DN7DFS13879 - 5YJSA2DP1DFS13880
5YJSA2DP1DFS14169 - 5YJSA2DP5DFS14367
5YJSA2DP1DFS14382
5YJSA2DP3DFS14416
5YJSA2DPXDFS14428
5YJSA2DP0DFS14468
5YJSA2DP4DFS14490
5YJSA2DN9DFS14497
5YJSA2DP1DFS14513
5YJSA2DP7DFS14547
5YJSA1DP8DFS14700
5YJSA2DP4DFS14750 - 5YJSA2DP3DFS14772
5YJSA2DP9DFS14811 - 5YJSA2DP8DFS14816
5YJSA2DP9DFS14887 - 5YJSA2DP5DFS15003
5YJSA2DP8DFS15027
5YJSA2DP8DFS15044
5YJSA2DP0DFS15054
5YJSA2DP2DFS15069
5YJSA2DP6DFS15074
5YJSA2DP9DFS15120
5YJSA2DP8DFS15139 - 5YJSA2DP7DFS15262
5YJSA2DN0DFS15280 - 5YJSA2DPXDFS15384
5YJSA2DP1DFS15533
5YJSA2DP5DFS15549 - 5YJSA2DP6DFS15558
5YJSA2DP1DFS15595 - 5YJSA2DP1DFS15600
5YJSA2DP0DFS15863 - 5YJSA2DP0DFS16026
5YJSA2DP6DFS16192
5YJSA2DP8DFS16193
5YJSA2DP8DFS16274
5YJSA2DN9DFS16508
5YJSA2DN7DFS16555
5YJSA2DP4DFS16689 - 5YJSA2DP1DFS16830

For feedback on the accuracy of this document, email ServiceBulletinFeedback@teslamotors.com.