



First Generation Front Fascia Applique Replacement

Classification	Repair Bulletin	Section/Group	10 - Body	Country/Region	North America
Year	2012	Model	Model S	Version	All

Bulletin Classification: *This repair bulletin provides instructions and guidelines for a noted condition or a customer concern. The information provided can address a broad range of known or perceived issues with the operation of Tesla vehicles. This bulletin might not be VIN-specific. These instructions assume knowledge of motor vehicle and high voltage electricity repairs, and should only be executed by trained professionals. Tesla Motors assumes no liability for injury or property damage due to a failure to properly follow these instructions or repairs attempted by unqualified individuals.*

Condition

Early Model S vehicles were equipped with the 1st generation front fascia applique (nosecone) that had a horizontal ridge across the front (Figure 1). This style of nosecone is no longer in production and must be replaced with the smooth, 2nd generation nosecone (Figure 2) after a front collision or if the applique needs to be replaced for another reason.



Figure 1 (1st generation)



Figure 2 (2nd generation)

Correction

Remove the 1st generation nosecone and associated parts and replace with the 2nd generation nosecone and associated parts. Ensure the airbag module firmware has the latest version.

Required Part(s):	Part Number	Description	Quantity
	1017414-00-D	FR FASCIA BRIGHT CARRIER	1
	1007818-00-B	ERGO CLIP, 2.5 - 3.00 PNL, 12 W, 16 L	7
	1009211-00-F	ASY, UNDERHOOD APRON, FR	1
	1018099-00-B	BRKT ASSY LICENSE PLATE FR	Optional

Use one of the below, as appropriate:			
	1017412-00-D	ASY CTR APPLIQUE FR FASCIA NA	1
	1017412-02-A	ASY CTR APPLIQUE FR FASCIA NA W/ UPA*	1

* with parking sensors

Correction Description	Correction	Time
Vehicle Inspection Only; 1 st Generation Nosecone Replacement Not Required	S011410001	0.1
Remove 1 st Generation Nosecone And Install 2 nd Generation Nosecone	S021410001	0.7

Procedure

1. Remove the front fascia assembly (refer to Service Manual procedure 10011001).
2. Place the front fascia assembly on a flat, protected surface.
3. Remove the 3 plastic rivets that secure the foam energy absorber to the front bumper assembly (Figure 3).

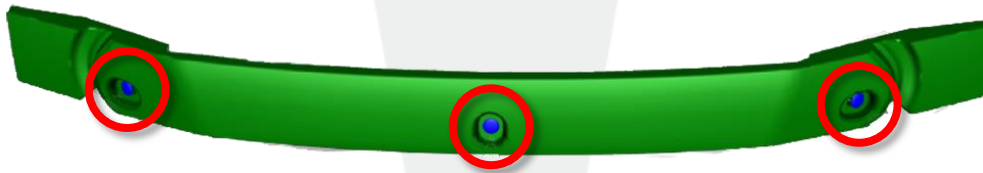


Figure 3

4. Remove and discard the foam energy absorber.
5. Remove the 1st generation front nosecone from the front fascia (refer to Service Manual procedure 10011402).
6. Installation of the 2nd generation nosecone is the reverse of removal, except for the following:
 - When installing the 2nd generation front fascia applique, refer to Service Manual procedure 10011302.
 - Do not reinstall the foam energy absorber onto the front bumper assembly. If a new bumper assembly is needed, ensure that it does not have a foam energy absorber installed.
 - Discard the existing underhood apron and replace with the latest version (refer to Service Manual procedure 12251002).
 - Install a new bright carrier using the 7 ergo clips.
 - If previously installed, replace the license plate bracket assembly (refer to Service Manual procedure 12070102).
7. Use Toolbox to update the PSRCM calibration (refer to SB-13-17-002, PSRCM Calibration Update).

Affected VIN(s)

This information is for reference purposes only. This list is not intended to be the sole information source for updates.

5YJSA1DP8CFF00001 - 5YJSA1DP0CFF00042
5YJSA1DP6CFP01201 - 5YJSA1DN8CFP01327
5YJSA1DP5CFP01500 - 5YJSA1DN2CFP01551
5YJSA1AP7CFR00102 - 5YJSA1AP9CFR00117
5YJSA1DP2CFS00001 - 5YJSA1DP0CFS01096
5YJSA1DN5CFS01738

For feedback on the accuracy of this document, email ServiceBulletinFeedback@teslamotors.com.

