



Second Generation Active Louver Retrofit

Classification	Repair Bulletin	Section/Group	17 - Electrical	Country/Region	North America
Year	2012 - 2013	Model	Model S	Version	All

Bulletin Classification: This repair bulletin provides instructions and guidelines for a noted condition or a customer concern. The information provided can address a broad range of known or perceived issues with the operation of Tesla vehicles. This bulletin might not be VIN-specific. These instructions assume knowledge of motor vehicle and high voltage electricity repairs, and should only be executed by trained professionals. Tesla Motors assumes no liability for injury or property damage due to a failure to properly follow these instructions or repairs attempted by unqualified individuals.

This Service Bulletin supersedes SB-14-17-004 R2, dated 8-Oct-14. Each content change is marked by a vertical line in the left margin. Discard the previous version and replace it with this one.

Condition

The 1st generation active louvers (Figure 1) are no longer available.

Correction

After a collision or another scenario where the active louver need to be replaced, retrofit the 2nd generation active louver assembly (Figure 2) and associated parts onto the vehicle. Refer to the Required Parts table.

NOTE: The horns are mounted in the middle of the 2nd generation active louver. When retrofitting the 2nd generation active louver, it is also necessary to relocate the horns.

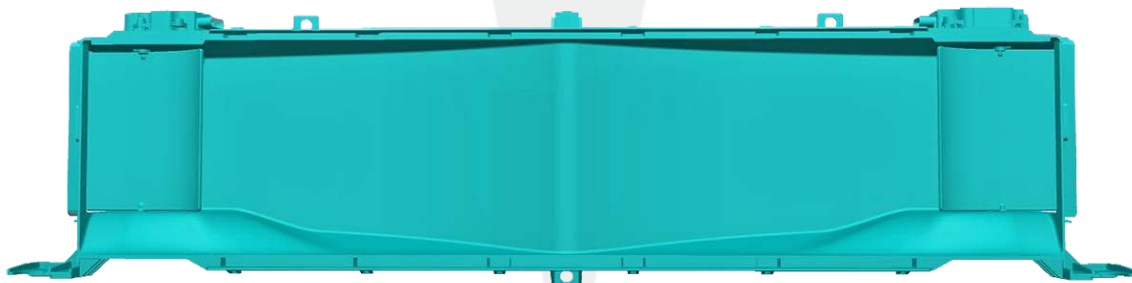


Figure 1 (1st Generation active louver)

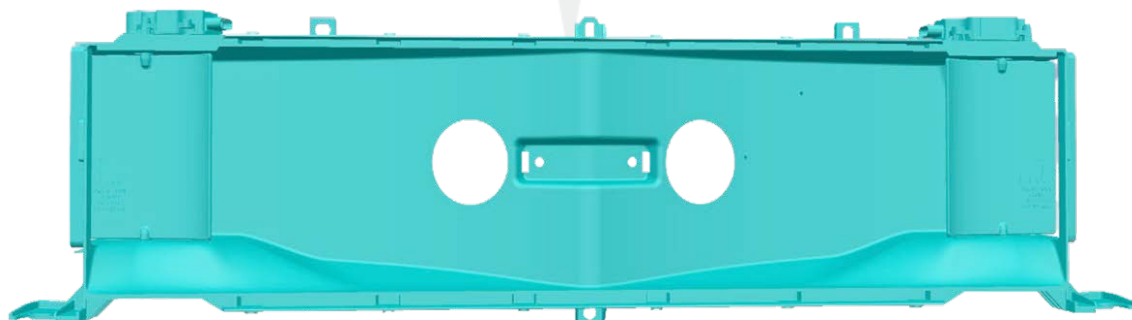


Figure 2 (2nd Generation active louver)

Required Part(s):	Part Number	Description	Quantity
	1007256-00-J	ASY, ACTIVE LOUVER CTR	1
	1024911-00-C	HORN - ELECTRICAL, 12V, 510 Hz	1
	1024910-00-C	HORN - ELECTRICAL, 12V, 410 Hz	1
	1013802-00-B	CLIP, M6, BUR100015	2
	1006533-00-A	SCR,M5-1.8X14,SCKT PAN WSHR HD,TORX,SST	2
	1039348-00-A	GASKETS, SET, FRONT DUCTING	2
	1008970-00-A	BLT HEX WSHR MG6-2.0x23.3	2
	1020793-00-B	FASCIA HORN APRON INJ. SUPPORT BRKT LH – PLASTIC	1
	1020792-00-B	FASCIA HORN APRON INJ. SUPPORT BRKT RH – PLASTIC	1

1004557-02-J If the vehicle does not have Homelink or the Tech package:
ASY,HRN,FEM,MDLS,BASE 1

1004557-01-J If the vehicle has Homelink or the Tech package:
ASY,HRN,FEM,MDLS,TECH 1

These part numbers were current at the time of publication. Use the revisions listed or later, unless otherwise specified in the Parts Manual

Correction Description	Correction	Time
Vehicle Inspection Only; 2 nd Generation Active Louver Retrofit Not Required	S011417004	0.2
Perform 2 nd Generation Active Louver Retrofit	S021417004	3.7

Procedure

1. Remove and discard the active louver (refer to Service Manual procedure 18500602).
2. Set the new active louver on a soft, clean surface with the front side facing down.
3. Slide the clips inwards onto the bracket on the rear of the active louver (Figures 3 and 4).

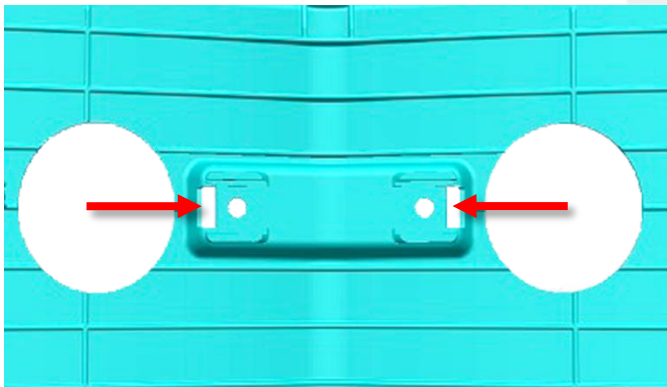


Figure 3



Figure 4

4. Turn the active louver over so that the front side faces up.

5. Remove the backing material from the large gaskets and adhere them to the front of the active louver around the circular cutouts (Figure 5).

NOTE: Ensure that the gaskets follow the contour of the circular cutouts so that they do not interfere with the installation of the horns.



Figure 5 (Large gaskets highlighted)

6. From the front of the active louver, insert each horn and bracket through the appropriate cutout (Figure 6).



Figure 6 (Horns highlighted)

7. From the rear of the active louver, secure the brackets to the clips using the provided bolts (torque 5 Nm) (Figure 7).

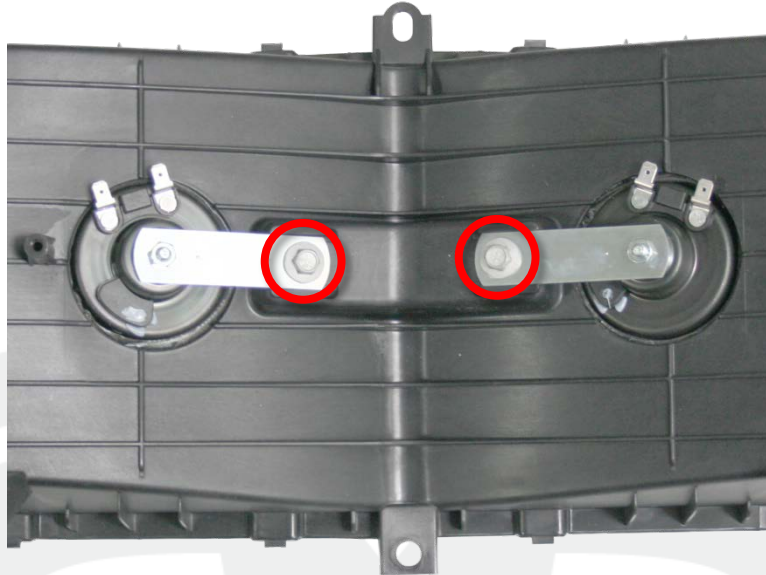


Figure 7

8. If the active louver is revision K or newer, remove the backing material from the small gaskets and adhere them to the rear of the active louver around the 2 outer circular cutouts (Figure 8). If the louver is revision H-J, discard the small gaskets.

NOTE: Ensure that the gaskets follow the contour of the circular cutouts.

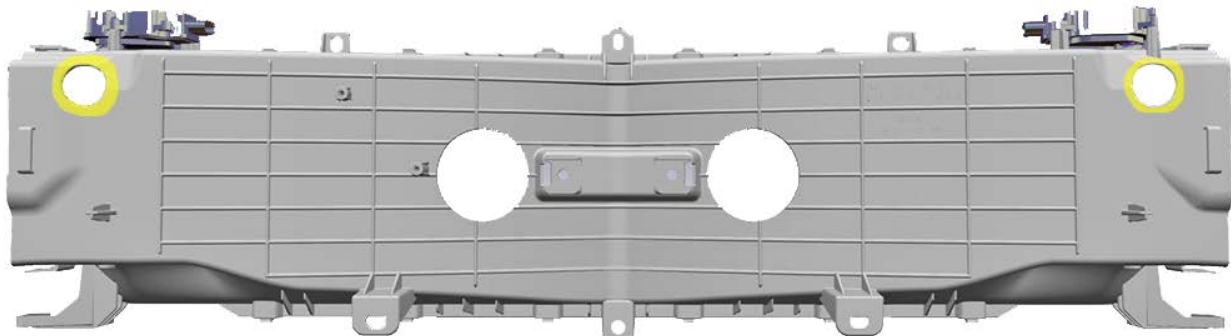


Figure 8 (Outer circular cutouts highlighted)

9. Installation is reverse of removal, with the following exceptions:
- Transfer the passive entry coil to the new active louver (torque 4 Nm).
 - Replace the FEM harness and reinstall the parts that were removed for access.

Affected VIN(s) Affected Model S vehicles built before approximately November 12, 2013.

NOTE: This is a simplified summary of the affected VIN list. Refer to the VIN/Bulletin Tracker or Customer/Vehicle profile to determine applicability of this bulletin for a particular vehicle.

For feedback on the accuracy of this document, email ServiceBulletinFeedback@teslamotors.com.