



# A/C Compressor Acoustic Cover and Bracket

<b>Classification</b>	Repair Bulletin	<b>Section/Group</b>	18 - Thermal Management	<b>Country/Region</b>	All
<b>Year</b>	2012-2014	<b>Model</b>	Model S	<b>Version</b>	LHD

**Bulletin Classification:** This repair bulletin provides instructions and guidelines for a noted condition or a customer concern. The information provided can address a broad range of known or perceived issues with the operation of Tesla vehicles. This bulletin might not be VIN-specific. These instructions assume knowledge of motor vehicle and high voltage electricity repairs, and should only be executed by trained professionals. Tesla Motors assumes no liability for injury or property damage due to a failure to properly follow these instructions or repairs attempted by unqualified individuals.

This Service Bulletin supersedes SB-14-18-002, dated 4-Apr-14. Each content change is marked by a vertical line in the left margin. Discard the previous version and replace it with this one.

## Condition

Two new parts are available that dampen noise from the A/C compressor, so that it is less audible both inside and outside of the vehicle: an acoustic cover that fits around the compressor, and an upgraded bracket that secures the compressor to the subframe.

## Correction

Upon customer complaint of excessive noise from the A/C compressor, remove the compressor and install the acoustic cover and upgraded bracket, if necessary.

**NOTE:** This procedure only applies to the Denso compressor (Figure 1). It does not apply to the Halla compressor (Figure 2).

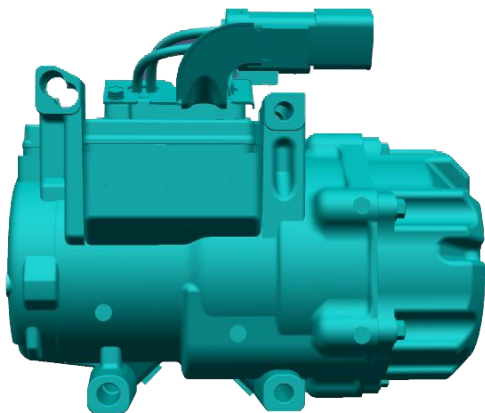


Figure 1 (Denso compressor, TPN 6007380 )

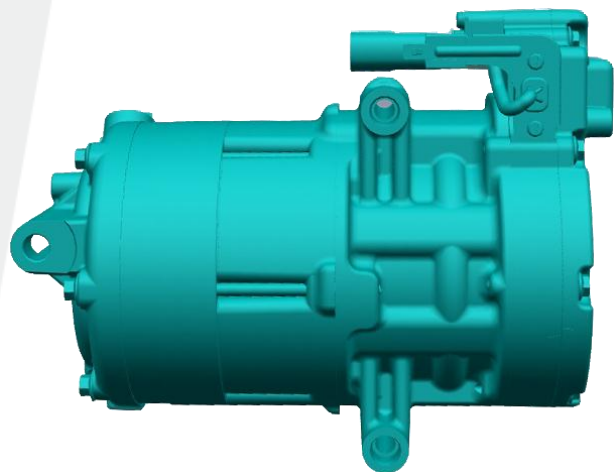


Figure 2 (Halla compressor, TPN 1028398)

Required Part(s):	Part Number	Description	Quantity
	1028988-00-A	MDL S, COMPRESSOR NVH COVER	1
	1006079-00-D	BRKT AC COMP TO AC BRKT	1

These part numbers were current at the time of publication. Use the revisions listed or later, unless otherwise specified in the Parts Manual.

Correction Description	Correction	Time
Vehicle Inspection Only: Acoustic Cover and Bracket Not Required	S011418002	0.1
Install Acoustic Cover Only	S021418002	2.4
Install Acoustic Cover And Bracket	S031418002	2.5

## Procedure

1. Recover all refrigerant from the HVAC system (refer to Service Manual procedure 18200102).
2. Remove the compressor and bracket assembly from the front subframe (refer to Service Manual procedure 18203002).

**NOTE:** The compressor mounts to an inner bracket, which attaches to an outer bracket. The outer bracket mounts to the front subframe (Figure 3). In this step, all 3 components are removed as one assembly.

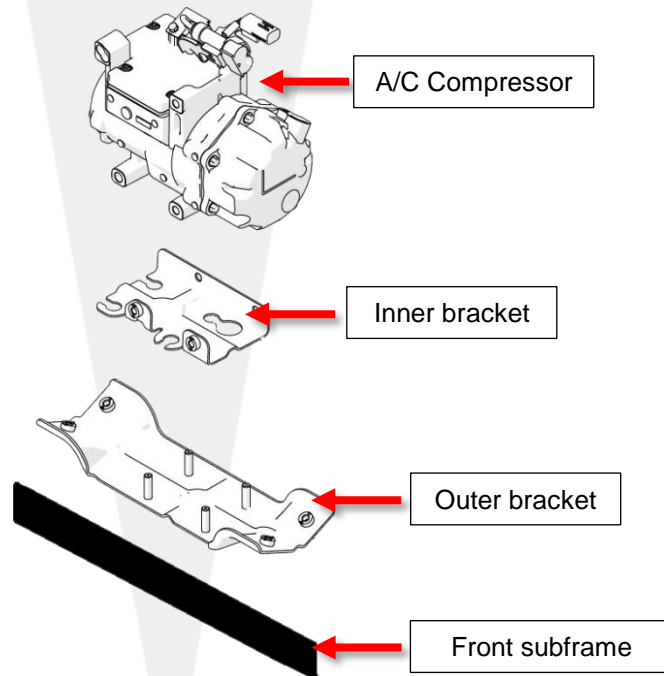
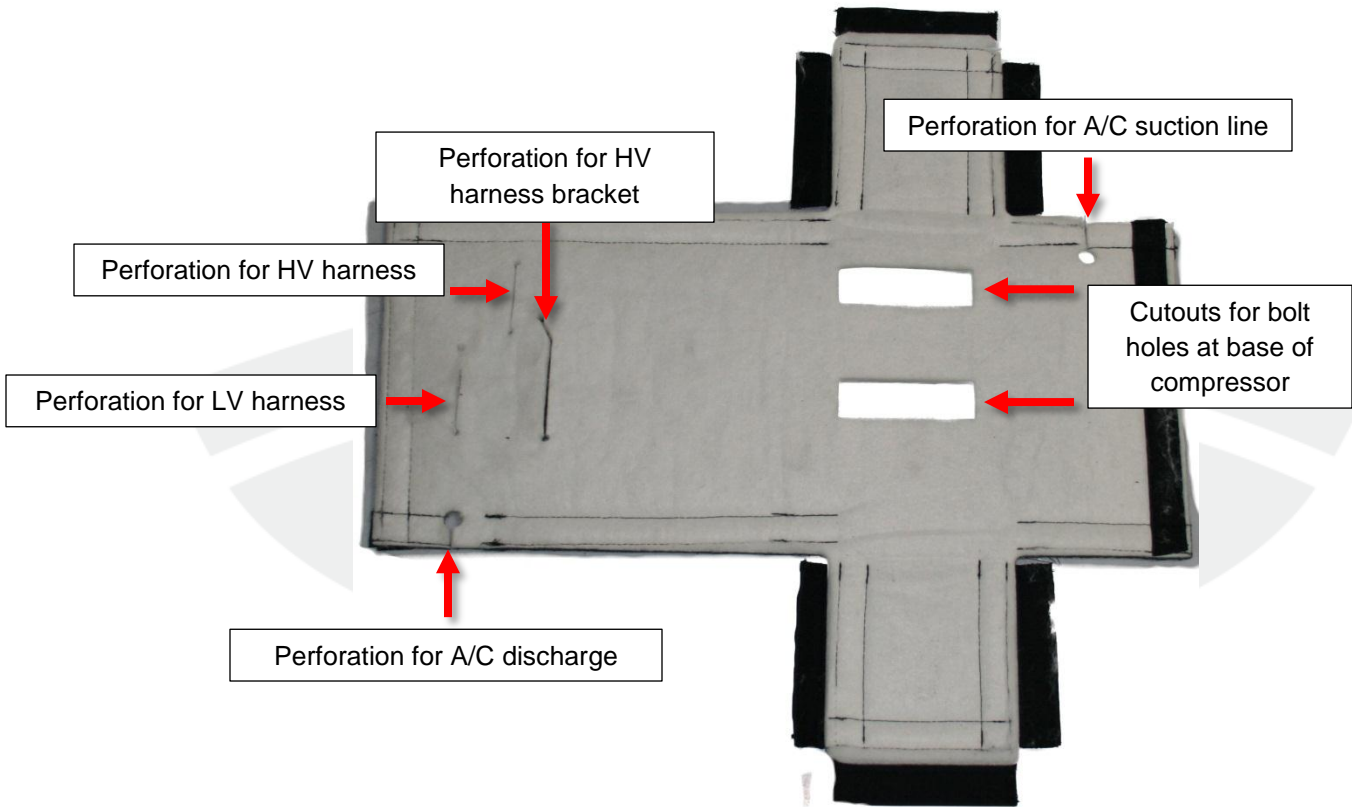


Figure 3

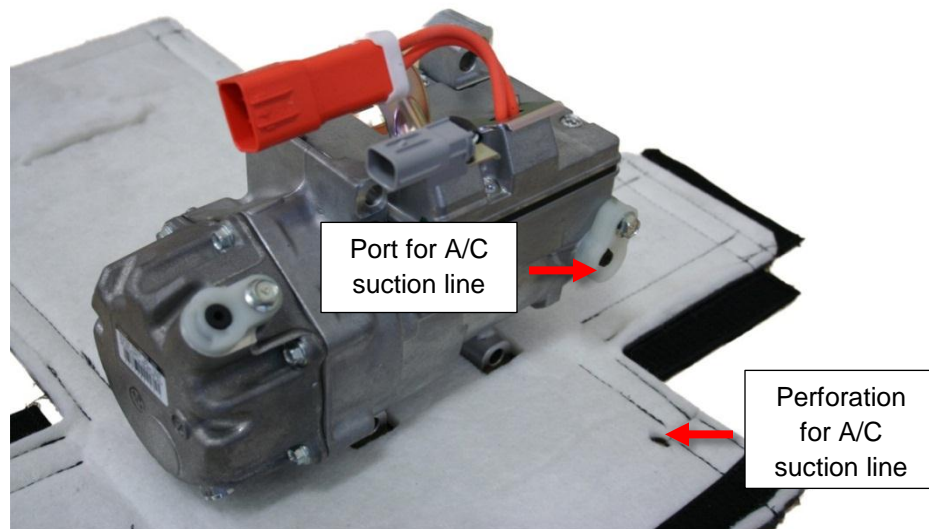
3. Remove the compressor from the inner bracket (torque 24 Nm).
4. Unfold the acoustic cover and lay it flat onto a workbench, with the white side facing up (Figure 4).

**NOTE:** The acoustic cover has cutouts for the bolt holes at the base of the compressor, as well as perforations for the A/C suction line, A/C discharge line, LV harness, HV cables, and HV harness.



**Figure 4**

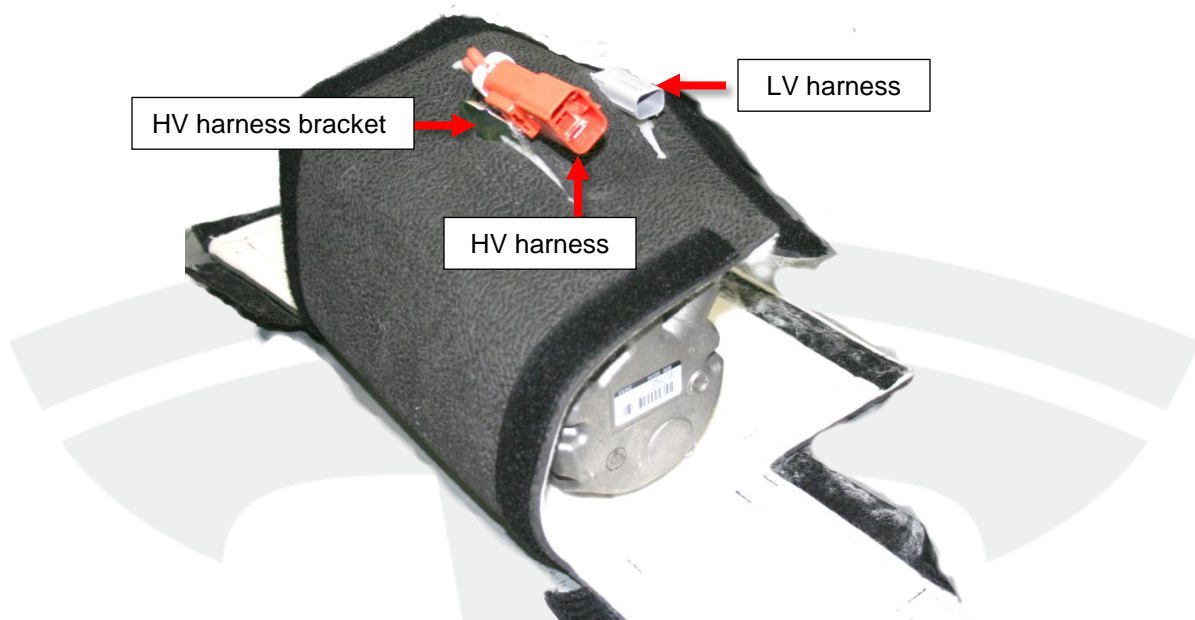
5. Position the compressor so that the 2 bolt holes at its base fit into the cutouts in the acoustic cover. Ensure that the port for the A/C suction line faces the correct perforation in the acoustic cover (Figure 5).



**Figure 5**

6. Disconnect the HV harness connector from the bracket.

7. Fold the long section of the acoustic cover over the compressor. Pull the HV wires, HV harness bracket, and LV harness connections through the perforations in the cover (Figure 6). Push down on the outside of the cover around the perforations; leave as few openings as possible.



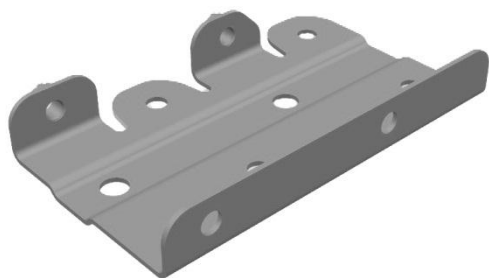
**Figure 6**

8. Resecure the HV harness to the bracket.
9. Fold the short sides of the acoustic cover over the sides of the compressor (Figure 7) and tightly secure the hook-and-loop material.

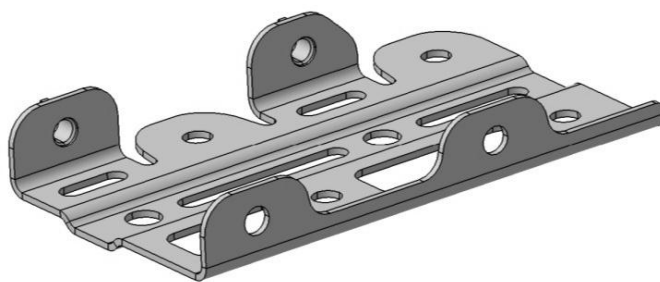


**Figure 7**

10. Inspect the inner bracket (Figures 8 and 9). If the bracket is revision D or later, skip to the next step. If it is revision C or earlier, release the 4 nuts that secure it to the outer bracket (torque 10 Nm). Replace the inner bracket with the updated version.



**Figure 8 (Old version, revision C and earlier)**



**Figure 9 (New version, revision D and later)**

11. Secure the A/C compressor to the inner bracket.
12. Secure the compressor and inner bracket assembly to the outer bracket.
13. Secure the compressor and bracket assembly to the front subframe.
14. Reinstall the front skid plate.
15. Reinstall the ground wire to the compressor.
16. Resecure the A/C discharge and suction lines (torque 10 Nm).
17. Fold the rest of the acoustic cover into place so that the discharge lines are routed through the perforations in the cover. The acoustic cover should fully enclose the compressor (Figure 8).
18. Tightly secure all hook-and-loop material on the compressor cover. Press down firmly around the perforations in the cover; ensure that the gaps around the harness and A/C lines are as small as possible.
19. Resecure the HV and LV harness connections.
20. Recharge the A/C system (refer to Service Manual procedure 18200102).
21. Reconnect electrical power.
22. Reinstall all components that were removed for access.

---

**Affected VIN(s)** Affected LHD Model S vehicles built before approximately July 12, 2014.

**NOTE:** This is a simplified summary of the affected VIN list. Refer to the VIN/Bulletin Tracker or Customer/Vehicle profile to determine applicability of this bulletin for a particular vehicle.

For feedback on the accuracy of this document, email [ServiceBulletinFeedback@teslamotors.com](mailto:ServiceBulletinFeedback@teslamotors.com).