



Install Pedestrian Protection Sensor Shrouds

| | | | | | |
|-----------------------|-----------------|----------------------|---------------------------|-----------------------|----------------------|
| Classification | Repair Bulletin | Section/Group | 20 - Safety and Restraint | Country/Region | Asia Pacific, Europe |
| Year | 2014-2015 | Model | Model S | Version | All |

Bulletin Classification: This repair bulletin provides instructions and guidelines for a noted condition or a customer concern. The information provided can address a broad range of known or perceived issues with the operation of Tesla vehicles. This bulletin might not be VIN-specific. These instructions assume knowledge of motor vehicle and high voltage electrical component repairs, and should only be executed by trained professionals. Tesla Motors assumes no liability for injury or property damage due to a failure to properly follow these instructions or repairs attempted by unqualified individuals.

Condition

Some vehicles that are equipped with the pedestrian protection system were released to customers without sensor shrouds. The shrouds are a redundant addition to protect the pedestrian protection sensors from water ingress.

Correction

After removing the front fascia for any reason, inspect both pedestrian protection sensors for shrouds (Figure 1). If shrouds are not present, install them over both pedestrian protection sensors.



Figure 1

| Required Part(s): | Part Number | Description | Quantity |
|-------------------|--------------|-----------------------------|----------|
| | 1052489-00-B | MS PED-PRO SENSOR SHROUD LH | 1 |
| | 1052490-00-B | MS PED-PRO SENSOR SHROUD RH | 1 |

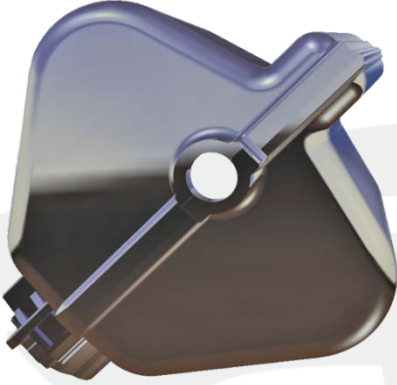
These part numbers were current at the time of publication. Use the revisions listed or later, unless otherwise specified in the Parts Manual.

| Correction Description | Correction | Time |
|---|------------|------|
| Vehicle Inspection Only; Pedestrian Protection Sensor Shrouds Already Installed | S011520001 | 0.0 |
| Install LH And RH Pedestrian Protection Sensor Shrouds | S021520001 | 0.1 |

Procedure

1. Inspect the pedestrian protection sensors for shrouds.

- If shrouds (Figure 2) are installed, no additional work is required; discontinue this procedure.
- If shrouds are not installed (Figure 3), continue this procedure.



✓ Figure 2



✗ Figure 3

2. Install pedestrian protection sensor shrouds.

- a. Place the shroud over the sensor so that the ribs secure the sensor (Figure 4).
- b. Fasten the clip at the bottom of the shroud (Figure 5). Ensure that the clip snaps into place.

NOTE: Components are removed from the following images for clarity.

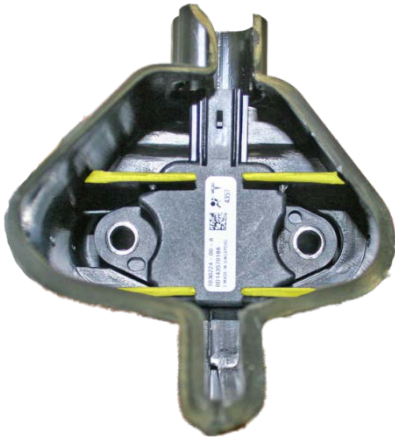


Figure 4 (Shroud ribs highlighted)



Figure 5

- c. Repeat steps a and b on the other sensor.

Affected VIN(s) Affected Model S vehicles built between approximately October 27, 2014 and January 9, 2015.

NOTE: This is a simplified summary of the affected VIN list. Refer to the VIN/Bulletin Tracker or Customer/Vehicle profile to determine applicability of this bulletin for a particular vehicle.