



# Install Key Battery Positive Contact Clip

**Classification** Campaign Bulletin    **Section/Group** 17 - Electrical    **Country/Region** United States

**Year** 2016    **Model** Model X    **Version** All

**Bulletin Classification:** *This campaign bulletin addresses a known non-safety-related condition and provides recommended technical diagnosis and repair procedures. Apply this procedure to all vehicles in the affected VIN range listed. These instructions assume knowledge of motor vehicle and high voltage electrical component repairs, and should only be executed by trained professionals. Tesla Motors assumes no liability for injury or property damage due to a failure to properly follow these instructions or repairs attempted by unqualified individuals.*

## Condition

On some Model X vehicles, the key battery could be incorrectly installed during replacement. This might cause the key battery to drain quickly or damage the key.

## Correction

Install a positive contact clip inside the key battery compartment to prevent incorrect battery installation.

Correction Description	Correction	Time
Inspection Only; Key Battery Positive Contact Clips Not Required	S011617002	—
Install Key Battery Positive Contact Clip On 1 Key	S021617002	0.05
Install Key Battery Positive Contact Clips On 2 Keys	S031617002	0.05
Install Key Battery Positive Contact Clip On 1 Key; Replace 1 Key	S041617002	0.05
Replace 2 Keys	S051617002	0.05

Required Part(s):	Part Number	Description	Quantity
	1080193-00-A	MX,KEYFOB,POSITIVE CONTACT,CLIP	1-2
	<b>If required:</b>		
	1061712-00-A	MODEL X KEY FOB BATTERY CR2354	1-2
	1054132-00-A	KEYFOB, MX, ASY	1-2

These part numbers were current at the time of publication. Use the revisions listed or later, unless otherwise specified in the Parts Manual.

**Special Tool(s):** 1047436-00-A BATTERY TESTER

## Procedure

1. Remove the lid on the back of the key using a small flat screwdriver or similar tool (Figure 1).

**⚠ CAUTION:** Do not damage the key casing when removing the lid.



Figure 1

2. Remove the battery using a small flat screwdriver or similar tool (Figure 2).

**⚠ CAUTION:** If the battery brand is Rayovac, discard the battery and replace it with a new Panasonic battery (Tesla part number 1061712-00-A or later). Rayovac batteries are incompatible with the new battery positive contact clip and can damage the key.



Figure 2

3. Check the battery voltage using the battery tester (Figure 3):

- If the voltage reading is 2V or higher, continue to the next step.
- If the voltage reading is lower than 2V, discard the battery and replace it with a new Panasonic battery (Tesla part number 1061712-00-A or later).



Figure 3

4. Inspect the key battery compartment:

- Check the battery side terminal for damage (Figure 4). If the terminal is broken, discard and replace the key.
- If the key battery positive contact clip is already installed (Figure 5), skip to step 6.



Figure 4 (Battery side terminal highlighted)



Figure 5 (Positive contact clip highlighted)

5. Install the positive contact clip below the battery side + terminal (Figure 6) with the flat side facing down (Figure 7). Slide the clip forward until it snaps in place. An auditory click is heard when the clip locks in place.

**TIP:** Snap 1 locking tab one at a time for ease of installation (Figure 8).

**⚠ CAUTION:** Ensure that both locking tabs on the clip are locked into place.

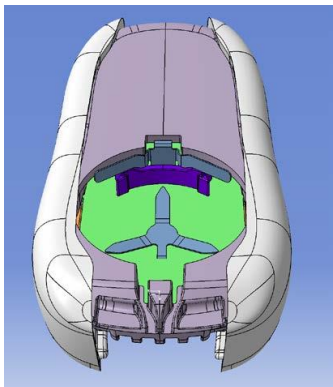


Figure 6 (Positive contact clip highlighted in purple)

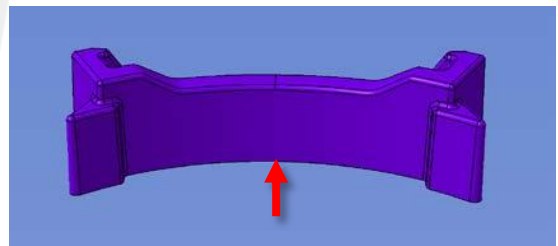


Figure 7 (Positive contact clip flat side)

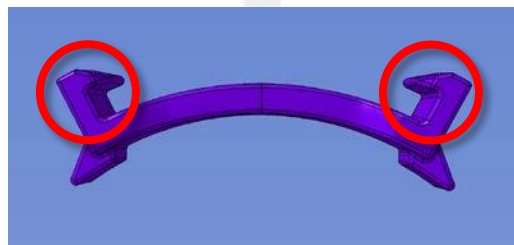
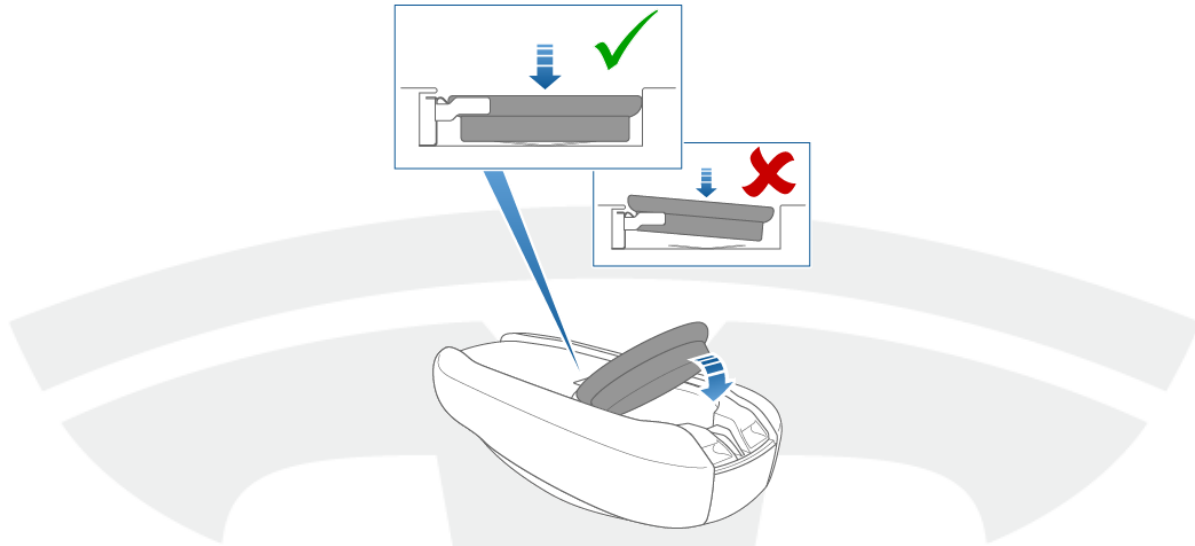


Figure 8 (Positive contact clip top view)

- Starting with the battery + sign facing up, insert the battery at an angle touching the front battery terminal first, and then carefully push the battery into the battery compartment (Figure 9).

**NOTE:** The battery sits flush in the battery compartment when installed correctly (Figure 9).



**Figure 9**

- Reinstall the key battery lid.
- Verify that the key operates correctly.
- Repeat this procedure on the second key.

---

**Affected VIN(s)** Affected Model X vehicles built before approximately 1/29/16.

**NOTE:** This is a simplified summary of the affected VIN list. Refer to the VIN/Bulletin Tracker or Customer/Vehicle profile to determine applicability of this bulletin for a particular vehicle.

For feedback on the accuracy of this document, email [ServiceBulletinFeedback@teslamotors.com](mailto:ServiceBulletinFeedback@teslamotors.com).