



Update Manufacturing Certification Label, Europe

Classification	Campaign Bulletin	Section/Group	19 - Labels	Country/Region	Europe
Year	2016	Model	Model X	Version	All

Bulletin Classification: *This campaign bulletin addresses a known non-safety-related condition and provides recommended technical diagnosis and repair procedures. Apply this procedure to all vehicles in the affected VIN range listed. These instructions assume knowledge of motor vehicle and high voltage electrical component repairs, and should only be executed by trained professionals. Tesla Motors assumes no liability for injury or property damage due to a failure to properly follow these instructions or repairs attempted by unqualified individuals.*

Condition

The manufacturing certification label might contain an incorrect towing capacity and/or rear axle mass.

Correction

Replace the manufacturing certification label with an updated label.

Correction Description	Correction	Time
SB-16-19-001 Not Applicable	S011619001	0.00
Replace Manufacturing Certification Label, European Model X	S021619001	0.25

Required Part(s):	Part Number	Description	Quantity
	1022959-00-A*	LBL,PRINTED EU STATUTORY PLATE	1

*The labels are specific to the Vehicle Identification Number (VIN). All labels have been shipped to the appropriate Service Center.

Shop supplies:

Alcohol wipes
 Touch up paint

This part number was current at the time of publication. Use the revision listed or later, unless otherwise specified in the Parts Manual.

Procedure

NOTE: The labels are specific to the Vehicle Identification Number (VIN). All labels have been shipped to the appropriate Service Center.

1. Retrieve the updated label for the specific VIN.
2. Inspect the new label to ensure that the VIN matches the dashboard VIN plate.
3. Open the driver's side door to access the manufacturing certification label at the base of the B-Pillar (Figure 1).

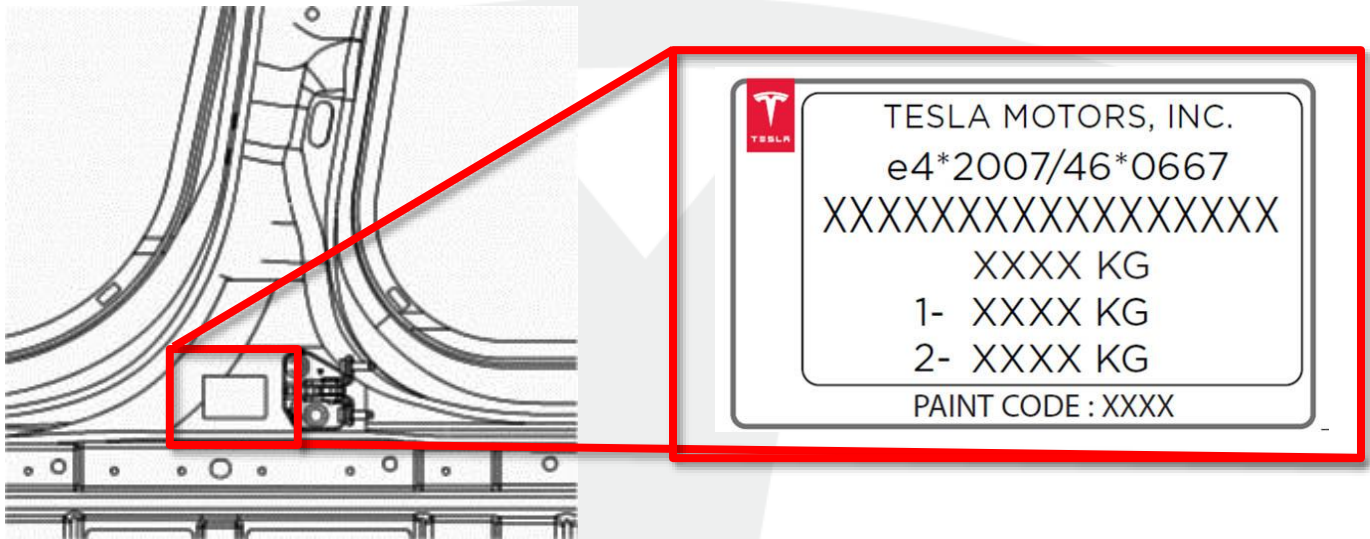


Figure 1 (LHD vehicle shown, RHD similar)

4. Starting from one corner, gently peel the label off the B-Pillar. Discard the label.
5. Use an alcohol wipe to remove any remaining adhesive or label shreds. Allow the alcohol to completely dry before continuing.
6. Install the updated label in the same location.
7. Use touch up paint to cover any nicks or scratches created during removal of the old label.

Affected VIN(s) Affected Model X vehicles built between approximately February 27, 2016 and September 29, 2016.

NOTE: This is a simplified summary of the affected VIN list. Refer to the VIN/Bulletin Tracker or Customer/Vehicle profile to determine applicability of this bulletin for a particular vehicle.

For feedback on the accuracy of this document, email ServiceBulletinFeedback@tesla.com.