



Adjust 2nd Row LH Fold-Flat Seat Recliner Cable

Classification	Recall Bulletin	Section/Group	13 - Seats	Country/Region	All
Year	2017	Model	Model X	Version	Fold-flat Seats

Bulletin Classification: *This Recall Bulletin must be applied to all vehicles listed below. Recall Bulletins are mandatory service procedures that must be carried out by Tesla-certified Service Centers only. Work must be logged and tracked by Tesla Service. Any work carried out by uncertified technicians on this issue may not be appropriately performed or recorded and could lead to an unsafe condition and/or void warranty provisions.*

Condition

On certain Model X vehicles with fold-flat second row seats, the left-side fold-flat second row seat may have a misadjusted cable that controls the recliner mechanisms.

Correction

Adjust the recliner cables to allow for proper operation of the 2nd row LH fold-flat seat.

Correction Description	Correction	Time
SB-17-13-004 Not Applicable	S011713004	0.00
Adjust 2 nd Row LH Fold-Flat Seat Recliner Cable, 1 st Generation Seats	S021713004	0.15
Adjust 2 nd Row LH Fold-Flat Seat Recliner Cable, 2 nd Generation Seats	S031713004	0.10

Required Part(s):	Part Number	Description	Quantity
	N/A	No Parts Necessary	N/A

Shop supplies:

Cable ties (x2)
 Small mirror
 Right-angle needle-nose pliers

These part numbers were current at the time of publication. Use the revisions listed or later, unless otherwise specified in the Parts Manual.

Special Tool(s):	1143802-00-A	Recliner Split Release Cable Spacer
-------------------------	--------------	-------------------------------------

Procedure

1. Inspect the recliner adjuster hardware underneath the 2nd row LH fold-flat seat to identify the seat generation that is being serviced (Figure 1).

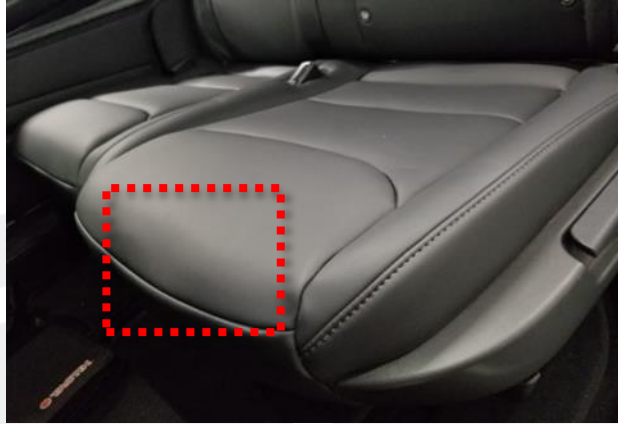


Figure 1

- If both a LH and RH recliner adjuster is present (Figure 2), the vehicle has 2nd generation seats. Continue to step 5.
- If no LH recliner adjuster is present (Figure 3), the vehicle has 1st generation seats. Continue to step 2.

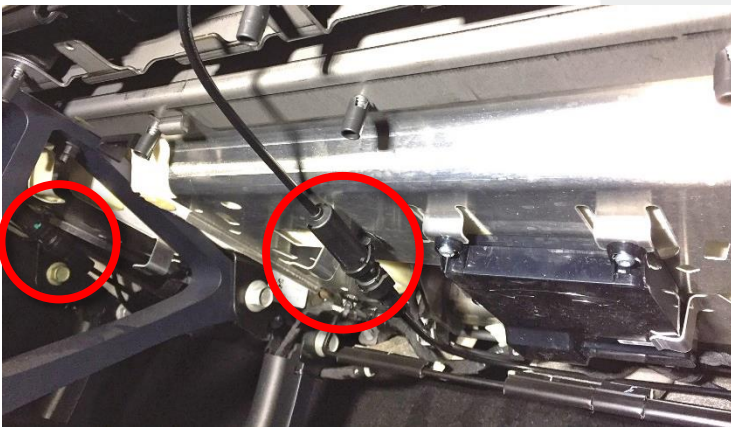


Figure 2 (2nd generation seat)



Figure 3 (1st generation seat)

2. Remove the rear toe kick.

3. Remove the locking clip that secures the recliner lever to the seat, and then use a plastic pry bar to remove the lever from the seat (Figure 4).



Figure 4

NOTE: It might take some force to remove the locking clip from the seat.

4. Release the push clips (x2) that secure the outside recliner cover to the seat, pull at the bottom of the cover to release the remaining clips (x4), and then lift up to release the tabs at the rear edge of the cover.
5. Make sure that the 2nd row LH fold-flat seat is fully upright and locked (Figure 5).

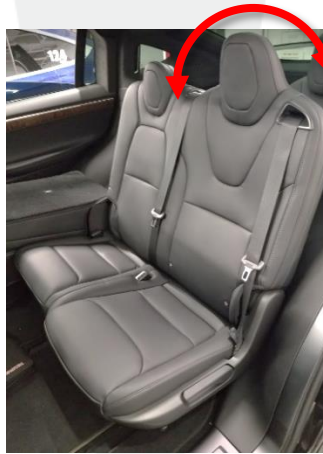


Figure 5

6. Remove the cable ties (x2) that secure the 2nd row latch cable splitter box to under the seat (Figures 6 and 7).



Figure 6



Figure 7

7. Remove the splitter box lid.
 - a. Use a small mirror to view the rear portion of the splitter box.
 - b. Use a small flat-blade screwdriver to release the tabs (x2) that secure the lid to the splitter box (Figure 8).

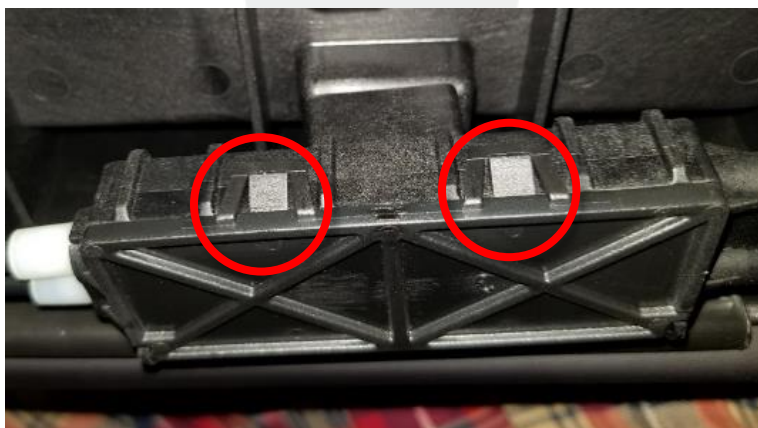


Figure 8

- c. Bend the lid slightly to release the pins that secure the lid to the splitter box, and then remove the lid from the box (Figure 9).

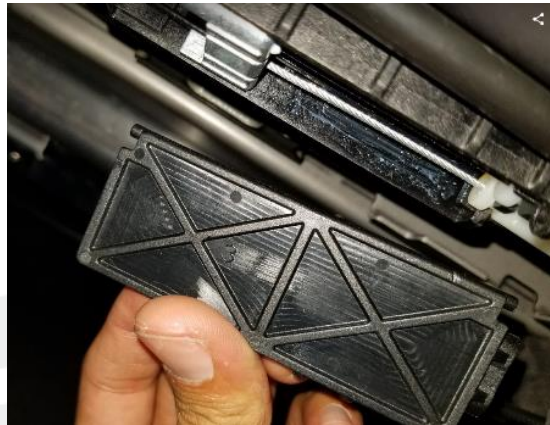


Figure 9

8. Open the recliner adjuster.
- **1st generation seats:** Release the tabs (x2), and then pull the lock down to release the locking clip from the RH recliner adjuster (Figure 10).
 - **2nd generation seats:** Release the tabs (x2), and then pull the lock down to release the locking clip from the RH recliner adjuster (Figure 11). Repeat this step for the LH recliner adjuster.



Figure 10 (1st generation seat)



Figure 11 (2nd generation seat)

NOTE: To open the recliner adjuster, apply moderate finger force on both locking tabs simultaneously, and then pull away from the adjuster cylinder.

NOTE: The recliner adjuster is open when there is a visible gap between the locking clip and the adjuster cylinder (Figures 12 and 13).



Figure 12 (1st generation seat)



Figure 13 (2nd generation seat)

9. If the vehicle has 1st generation seats, release the locking clip from the LH recliner adjuster (Figures 14 and 15). If the vehicle has 2nd generation seats, continue to step 10.

NOTE: Squeeze the rear edge of the tabs (x2) simultaneously. Once the tabs are released, pull the lock out.



Figure 14

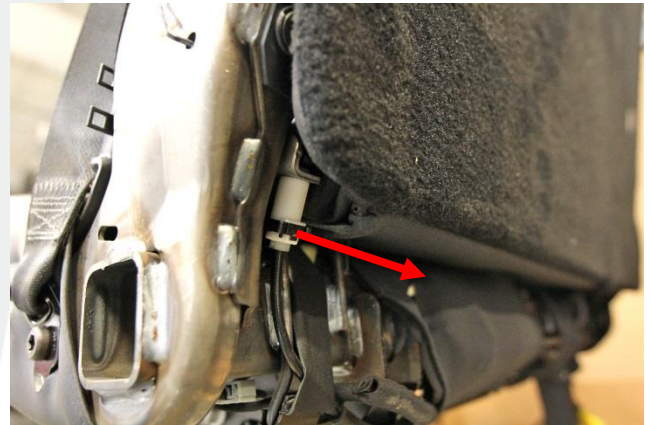


Figure 15

10. Insert the **special tool** into the splitter box between the slider and the splitter box wall by simultaneously pushing up and rotating inwards (Figures 16 and 17).

NOTE: Make sure that the **special tool** is fully seated in position and stays secured in the splitter box before continuing. This makes sure that the cable tension is correct.



Figure 16



Figure 17

11. If the vehicle has 1st generation seats, secure the locking clip to the LH recliner adjuster (Figure 18). If the vehicle has 2nd generation seats, continue to step 12.

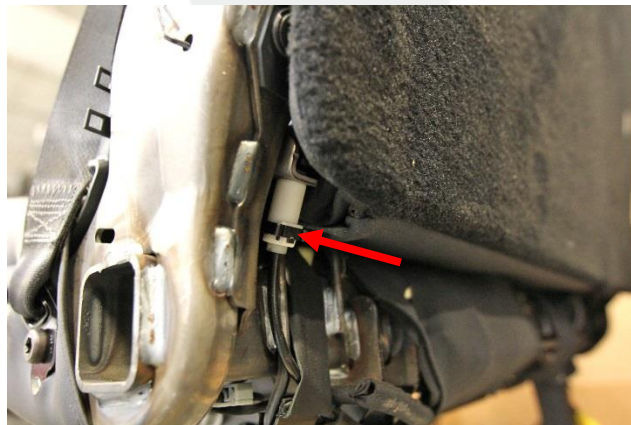


Figure 18

12. Secure the locking clip on the RH recliner adjuster by pressing on the middle of the locking clip until it is fully seated (Figure 19).

NOTE: The recliner adjuster is locked when there is no gap between the locking clip and the adjuster cylinder (Figure 20).



Figure 19 (2nd generation seat, 1st generation similar)



Figure 20 (2nd generation seat, 1st generation similar)

13. If the vehicle has 2nd generation seats, repeat step 12 for the LH recliner adjuster. For 1st generation seats, continue to step 14.

NOTE: Make sure that the locking clip is fully seated on both recliner adjusters before continuing to the next step.

14. Remove the **special tool**.

15. Install the splitter box lid.

a. Insert one pin first, and then slightly bend the lid to seat the second pin (Figures 21 and 22).



Figure 21



Figure 22

b. Pivot the lid up and secure the two tabs at the rear edge of the lid.

16. Install the new cable ties (x2) that secure the splitter box lid.
 - a. Loop the cable tie around the cable outlets, and then slide the cable tie across the ribbing structure to the left side of the splitter box (Figures 23 and 24).



Figure 23



Figure 24

- b. Tighten the cable tie, and then remove the excess.
 - c. Repeat steps 16a and 16b for the right side of the splitter box.
17. If the vehicle has 1st generation seats, temporarily install the recliner lever. If the vehicle has 2nd generation seats, continue to step 18.
18. Verify seat operation.
 - a. Verify that the seat can fold flat by pulling on the recliner handle (Figure 25).
 - b. If the vehicle is equipped with 3rd row seats, verify that the 2nd row LH fold-flat seat can move to the easy entry position by pressing the switch located on the top of the seat back (Figure 26).



Figure 25



Figure 26

- c. If the seat does not operate as described above, escalate a Toolbox session.

19. If the vehicle has 2nd generation seats, the procedure is complete. If the vehicle has 1st generation seats, remove the recliner lever and continue to step 20.
20. Slide the tabs at the rear edge of the outside recliner cover down into the seat, fasten the clips (x4), and then secure the cover with the push clips (x2).
21. Install the recliner lever and the clip that secures the recliner lever to the seat.
22. Install the toe kick.

Affected VIN(s) Affected Model X vehicles with fold-flat second row seats built before August 16, 2017.

NOTE: This is a simplified summary of the affected VIN list. Refer to the VIN/Bulletin Tracker or Customer/Vehicle profile to determine applicability of this bulletin for a particular vehicle.

For feedback on the accuracy of this document, email ServiceBulletinFeedback@tesla.com.