



Replace Incorrect Labeling

Classification Campaign Bulletin **Section/Group** 19 - Labels **Country/Region** EMEA

Year 2019 **Model** Model 3 **Version** LHD

Bulletin Classification: *This campaign bulletin addresses a known non-safety-related condition and provides recommended technical diagnosis and repair procedures. Apply this procedure to all vehicles in the affected VIN range listed. These instructions assume knowledge of motor vehicle and high voltage electrical component repairs, and should only be executed by trained professionals. Tesla assumes no liability for injury or property damage due to a failure to properly follow these instructions or repairs attempted by unqualified individuals.*

This Service Document supersedes SB-19-19-001, dated 28-Feb-2019. Each content change is marked by a vertical line in the left margin. Discard the previous version and replace it with this one.

Condition

Certain Model 3 vehicles were manufactured with incorrect regulatory labeling near the base of the driver side B-pillar.

Correction

Inspect the vehicle for symptoms related to the condition. If symptoms are present, replace the label with an updated label.

Correction Description	Correction	Time
SB-19-19-001 Not Applicable	S011919001	0.00
Replace Incorrect Labeling	S021919001	0.10

Required Part(s):	Part Number	Description	Quantity
	1462927-00-C	LBL,BLANK MFG CERTIFICATION	1

Shop supplies:

Alcohol wipes
 Touch up paint

These part numbers were current at the time of publication. Use the revisions listed or later, unless otherwise specified in the Parts Manual.

Procedure

NOTE: The labels are specific to the Vehicle Identification Number (VIN). All labels have been shipped to the appropriate Service Center.

1. Open the driver's side door and inspect the manufacturing certification label near the base of the B-Pillar (Figure 1).



Figure 1

- If the label is an EU label (Figure 2), discontinue this procedure.
- If the label is a US label (Figure 3), continue to the next step.



Figure 2 (EU label)

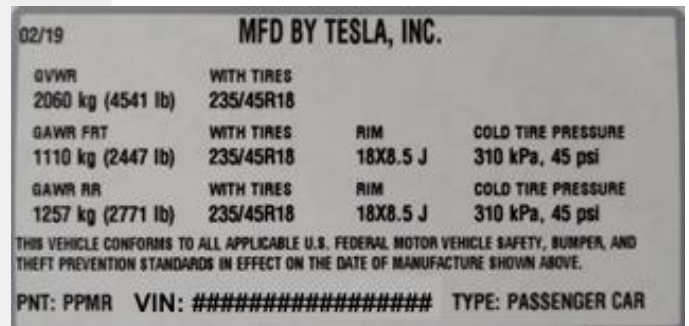


Figure 3 (US Label)

2. Retrieve the updated label for the specific VIN.
3. Inspect the new label and check that the VIN matches the dashboard VIN plate.
4. Starting from one corner, carefully peel the label off the B-Pillar. Discard the label.

NOTE: Take care not to damage the body paint.

5. Use an alcohol wipe to remove any remaining adhesive or label shreds. Allow the alcohol to completely dry before continuing.

6. Install the updated label in the same location.

NOTE: Position the label so that it is readable when standing outside of the vehicle (Figure 4).

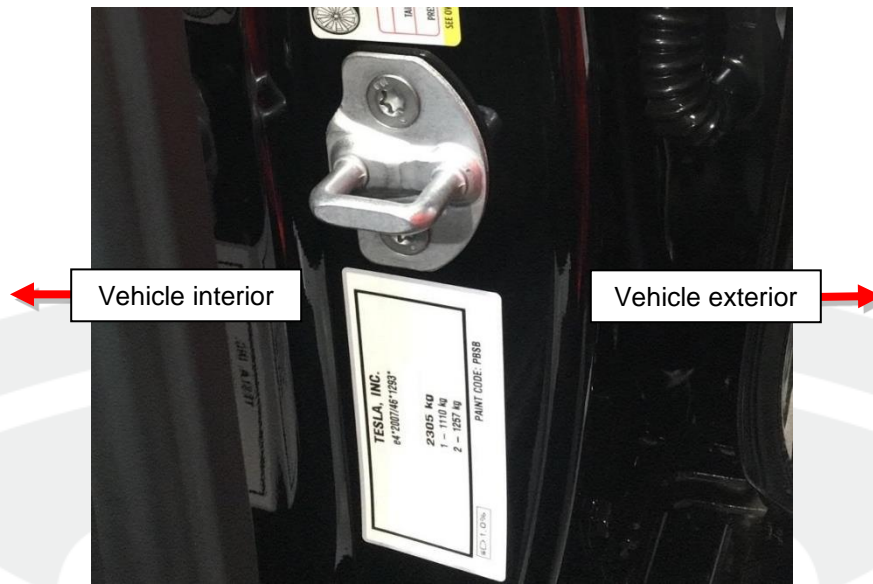


Figure 4

7. If necessary, use touch up paint to cover any nicks or scratches created during removal of the old label.

Affected VIN(s) Affected Model 3 vehicles in EMEA built between approximately January 3, 2019 and January 8, 2019.

NOTE: This is a simplified summary of the affected VIN list. Refer to the VIN/Bulletin Tracker or Customer/Vehicle profile to determine applicability of this bulletin for a particular vehicle.

For feedback on the accuracy of this document, email ServiceBulletinFeedback@tesla.com.