 Tesla, Inc. Service Bulletin		<h2>Reroute Front Passenger Buckle Electrical Harness</h2>	
SB-20-17-003 February 26, 2020			
Classification		Section/Group	Mobile Service
Campaign Bulletin		17 - Electrical	Can Perform (where permitted)
Model Year	Model	Country/Region	Version
2019 - 2020	Model 3	China	Giga Shanghai
<small>The model(s) and model year(s) listed are a general approximation of the affected VIN list. Refer to the VIN/Bulletin Tracker or Customer/Vehicle profile to determine applicability of this bulletin for a particular vehicle.</small>			

Campaign Bulletin: This campaign bulletin addresses a known non-safety-related condition and provides recommended technical diagnosis and repair procedures. Apply this procedure to all vehicles in the affected VIN list.

Condition

On certain Model 3 vehicles built at Giga Shanghai, the front passenger buckle electrical harness might be damaged due to improper routing.

Correction

Inspect the front passenger buckle electrical harness for damage. If the harness is undamaged, reroute the existing harness as directed. If the harness is damaged, replace the buckle and reroute the new harness as directed.


Correction Description	Correction	Time
SB-20-17-003 Not Applicable	S012017003	0.00
Inspect Front Passenger Buckle Electrical Harness; Reroute Harness	S022017003	0.10
Replace Front Passenger Buckle Due To Damaged Electrical Harness; Reroute Harness	S032017003	0.20

Part Number	Description	Quantity
Part Required (if necessary) 1090323-01-D	M3 -1ST ROW BUCKLE, BLK	1

This part number was current at the time of publication. Use the revisions listed or later, unless otherwise specified in the [Parts Catalog](#).

Procedure

1. Open the RH front door.
2. Move the front passenger seat to the rearmost and lowest position.

 **TIP:** Record the position of the seat prior to moving it so that the seat will be restored back to its original position later in this document.

3. Remove the inboard side shield trim:

- a. Release the front clip that attaches the inboard side shield to the front passenger seat inner seat rail (Figure 1).



Figure 1

- b. Release the rear portion of the inboard side shield from the inner seat rail, and then rotate the shield upwards (Figure 2).



Figure 2

- c. Pass the buckle out through the slot of the inboard side shield, and then remove the inboard side shield from the vehicle (Figure 3).

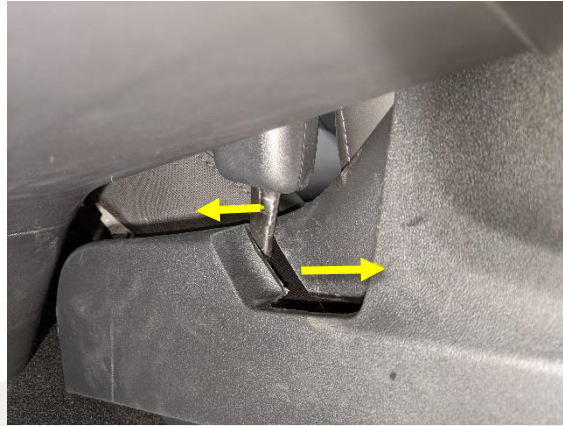
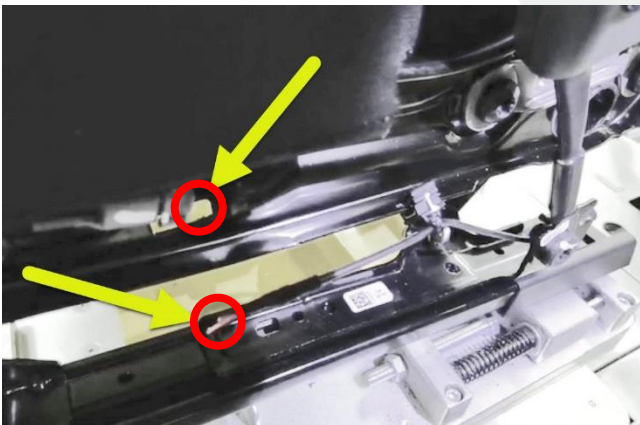


Figure 3

4. Inspect the front passenger buckle electrical harness for damage:

- If the electrical harness is damaged (Figure 4), replace the buckle (refer to Service Manual procedure 20054702), and then continue to step 6b.
- If the electrical harness is undamaged (Figure 5), continue to the next step.



✗ Figure 4 – Buckle electrical harness separated from connector



✓ Figure 5 – Buckle electrical harness attached to connector

5. Inspect the front passenger buckle electrical harness for damage while raising the front passenger seat to the highest position:
 - If the electrical harness is damaged (Figure 6), replace the buckle (refer to Service Manual procedure 20054702), and then continue to step 6b.
 - If the electrical harness is undamaged, continue to the next step.



Figure 6

6. Reroute the front passenger buckle electrical harness:
 - a. Release the clip that attaches the front passenger buckle electrical harness to the inner seat rail (Figure 7).



Figure 7

- b. If the harness is secured to the seat with tape, remove and discard the tape.
- c. Remove the excess slack within the harness, and then reattach the clip so that there is a small amount of slack with the harness as shown in Figure 8.

NOTE: Reattach the clip as far toward of the seat as possible without causing strain on the harness.

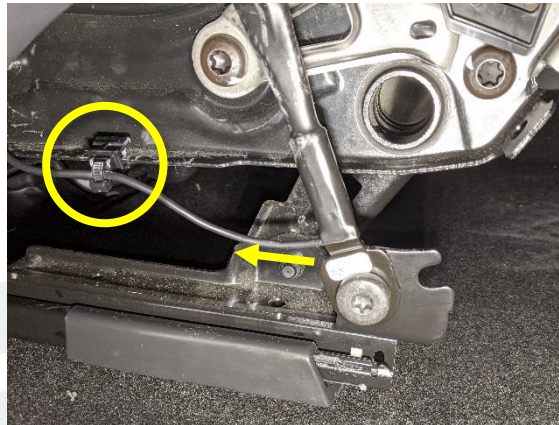
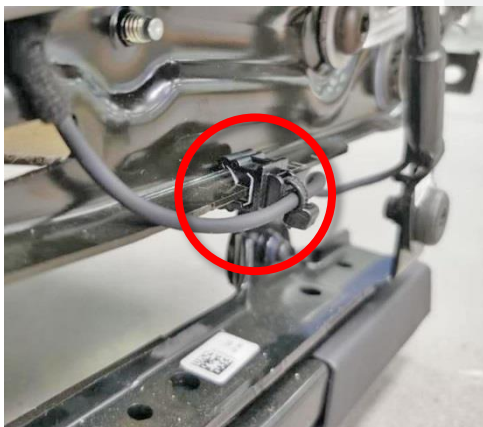


Figure 8

NOTE: Make sure that the clip is fully attached to the inner seat rail (Figure 9) and not at an angle (Figure 10).



✓ **Figure 9**



✗ **Figure 10**

- d. Make sure that the harness is routed in front of the seat recliner bolt and the alignment pin (Figure 11), and not around it (Figure 12).



✓ **Figure 11 – Harness in front of the seat recliner bolt and alignment pin**



✗ **Figure 12 – Harness around the seat recliner bolt**

- e. Verify that the harness does not catch on anything while cycling the seat from the lowest position to the highest position (Figure 13), and readjust the harness clip as needed (Figure 14).

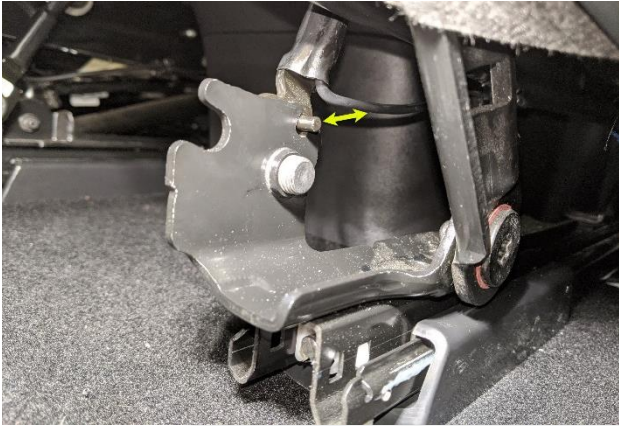


Figure 13

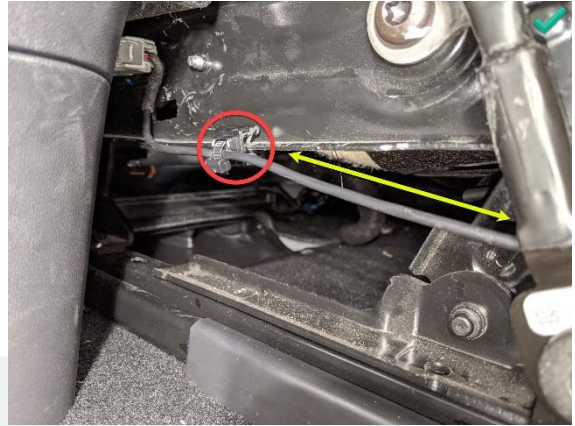


Figure 14

- 7. Move the front passenger seat to the lowest and rearmost position.
- 8. Install inboard side shield onto front passenger seat:
 - a. Pass the seat belt buckle in through the inboard side shield (Figure 15).



Figure 15

- b. Rotate the inboard side shield down into position, and then fasten the rear portion to the inner seat rail (Figure 16).



Figure 16

- c. Fasten the front clip that attaches the inboard side shield to the front passenger inner seat rail (Figure 17).



Figure 17

9. Restore the front passenger seat to its original position.
10. Close the RH front door.