 Tesla, Inc. Service Bulletin		<h2 style="margin: 0;">Inspect Rear Damper To Body Bolts</h2>	
SB-20-31-002 March 10, 2020			
Classification Campaign Bulletin		Section/Group 31 - Suspension	Mobile Service Cannot Perform
Model Year 2019 - 2020	Model Model 3	Country/Region North America	Version All
<small>The model(s) and model year(s) listed are a general approximation of the affected VIN list. Refer to the VIN/Bulletin Tracker or Customer/Vehicle profile to determine applicability of this bulletin for a particular vehicle.</small>			

Campaign Bulletin: This campaign bulletin addresses a known non-safety-related condition and provides recommended technical diagnosis and repair procedures. Apply this procedure to all vehicles in the affected VIN list.

Condition

On some Model 3 vehicles, the LH and/or RH rear damper top mount bolts were not fastened according to internal specifications and may create noise, vibration, and harshness.

Correction


Inspect the vehicle for symptoms related to the condition. If symptoms are present, replace rear damper(s) that are missing top mount bolts or have top mount bolts that are looser than half a turn.

Correction Description	Correction	Time
SB-20-31-002 Not Applicable	S012031002	0.00
Torque LH And RH Rear Damper Top Mount Bolts	S022031002	0.20
Replace LH Rear Damper And Torque Top Mount Bolts On RH Rear Damper	S032031002	0.30
Replace RH Rear Damper And Torque Top Mount Bolts On LH Rear Damper	S042031002	0.30
Replace LH and RH Rear Dampers	S052031002	0.70

	Part Number	Description	Quantity
If Necessary	1044040-00-B	BOLT, HF, M10-1.5x49, [10.9]ZNFL, CMAT	1-4
	1044461-02-E	RR DAMPER ASSY - COIL RWD	1-2
<small>These part numbers were current at the time of publication. Use the revisions listed or later, unless otherwise specified in the Parts Catalog.</small>			
Special Tools	1081765-00-A	3/4 TON UNDERHOIST STAND	
	1459409-00-A	ADAPTER, HUB JACK, MODEL 3	
	1137855-00-A	TOOL, REAR RIDE HEIGHT TORQUE, MODEL 3	
	1457016-00-A	SPRING COMPRESSOR, MODEL 3	

Procedure

1. Remove the LH and RH rear wheels (refer to Service Manual procedure 34015001).
2. Raise the vehicle to a comfortable working height.
3. Inspect the LH and RH rear flexible brake hoses, rear brake calipers, electronic parking brakes, electronic parking brake electrical harnesses, and rear tires for signs of damage (Figure 1).

 **NOTE:** Inspect the electronic parking brake thoroughly, as cracks on the brake housing might be difficult to see (Figures 2 and 3).

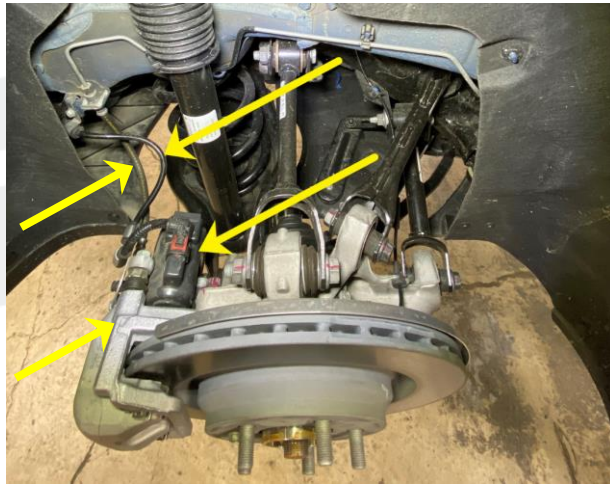


Figure 1 – RH shown; LH similar

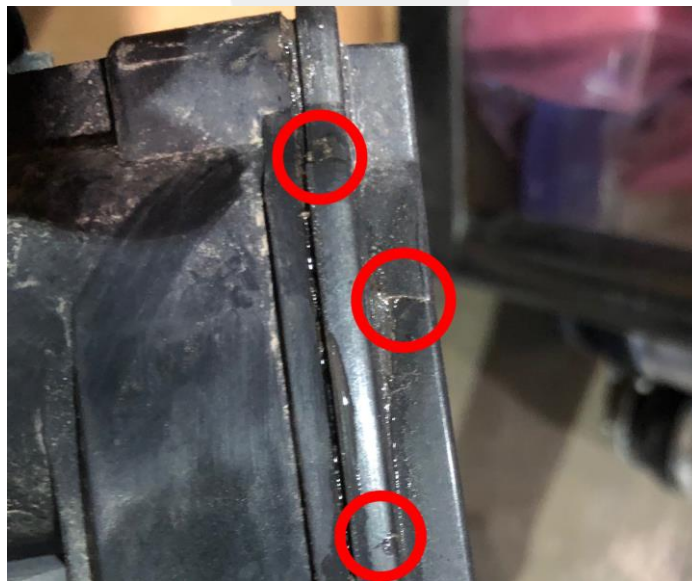


Figure 2



Figure 3

- If damage is found, create and escalate a Toolbox session, and then continue to step 4.
- If no damage is found, continue to step 4.

4. Inspect the LH and RH rear dampers for any missing top mount bolts (Figure 4).



Figure 4 – LH shown; RH similar

- If a damper is missing 1 or 2 top mount bolts, replace the rear damper (refer to Service Manual procedure 31153602).
 - If a rear damper has both bolts already installed, tighten both rear damper top mount bolts (torque 41 Nm).
- ⚠ CAUTION:** If either of the bolts require at least half a turn to torque to spec, replace the rear damper (refer to Service Manual procedure 31153602).