 <b>Tesla, Inc.</b> <b>Service Bulletin</b>		<b>Install Felt Flats and Felt Tape to 1<sup>st</sup> Row Footwells</b>	
<b>SB-21-15-002</b> April 6, 2021			
<b>Classification</b> Repair Bulletin		<b>Section/Group</b> 15 - Interior Trim	<b>Mobile Service</b> Cannot Perform
<b>Model Year</b> 2021	<b>Model</b> Model Y	<b>Country/Region</b> China	<b>Version</b> All
<small>The model(s) and model year(s) listed are a general approximation of the affected VIN list. Refer to the VIN/Bulletin Tracker or Customer/Vehicle profile to determine applicability of this bulletin for a particular vehicle.</small>			

Repair Bulletin: This repair bulletin provides instructions on addressing a noted condition or possible customer concern regarding the operation of Tesla vehicles. These instructions should only be performed by trained professionals.

## Condition

Some Model Y vehicles manufactured at Giga Shanghai might produce a squeaking noise when a shoe heel is pressed against the 1<sup>st</sup> row footwells.

## Correction

Install felt flats and apply felt tape to the driver and front passenger footwells to mitigate the noise.

Correction Description	Correction	Time
SB-21-15-002 Not Applicable	S012115002	0.00
Install Felt Flat And Felt Tape To 1 <sup>st</sup> Row Floor	S022115002	0.95

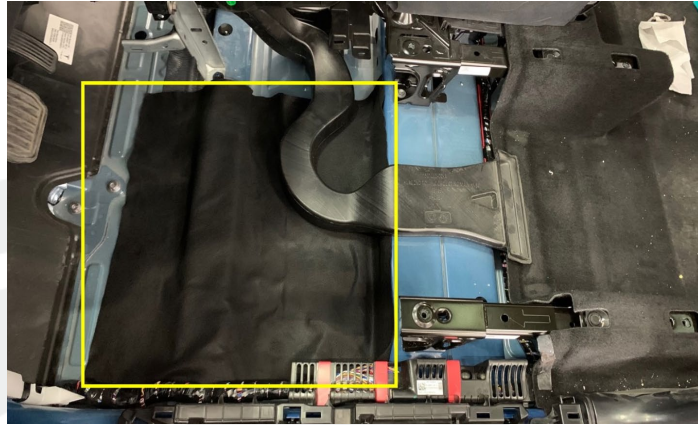
Part Number	Description	Quantity
<b>Parts Required</b> 1662269-00-A	FELT TAPE EPP PLUG, LH, MY, CN	1
1662271-00-A	FELT TAPE EPP PLUG, RH, MY, CN	1
1662012-00-A	FELT FLAT	2

These part numbers were current at the time of publication. Use the revisions listed or later, unless otherwise specified in the [Parts Catalog](#).

<b>Special Tools</b> 1111306-00-A	Glue Gun	1
<b>Shop Supplies</b>	Glue Stick, Hot Melt	

## Procedure

1. Remove the driver and front passenger seats (refer to Service Manual procedure [13040102](#)).
2. Remove the center console (refer to Service Manual procedure [15190101](#)).
3. Remove the LH front carpet (refer to Service Manual procedure [15301001](#)).
4. Position the felt flat onto the floor of the LH 1<sup>st</sup> row footwell as shown (Figure 1).



**Figure 1**

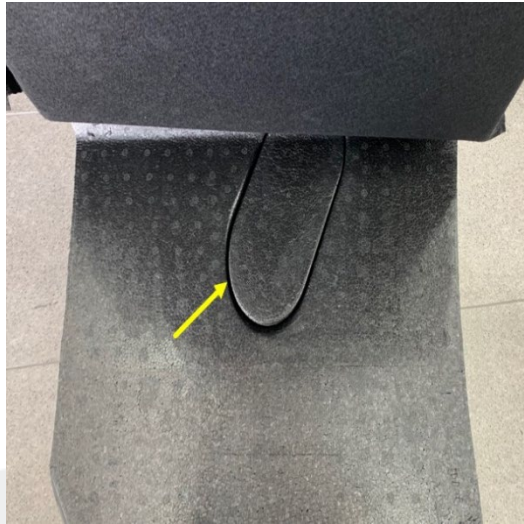
5. If the carpet has separated from the foam backing, use the glue gun to apply hot-melt adhesive to the glue line, use a clean shop towel to firmly press the carpet to the foam backing, and hold for at least 1 minute until cool. (Figure 2).

**⚠ CAUTION:** Wear heat resistant gloves when performing this step.



**Figure 2**

6. Remove the LH front carpet support plug (Figure 3).

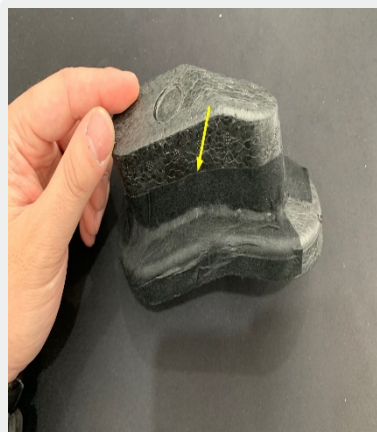


**Figure 3**

7. Install the LH felt tape onto both sides of the LH front carpet support plug (Figures 4 and 5).



**Figure 4**



**Figure 5**

8. Install the LH front carpet support plug (Figure 3).
9. Install LH front carpet (refer to Service Manual procedure [15301001](#)).
10. Repeat steps 3 through step 9 for the RH side.
11. Install center console (refer to Service Manual procedure [15190101](#)).
12. Install the driver and front passenger seats (refer to Service Manual procedure [13040102](#)).