		Tesla, Inc. Service Bulletin		<i>Inspect Center Console Decor Lid Latch Pin</i>	
SB-21-15-006 September 11, 2021					
Classification		Section/Group		Mobile Service	
Repair Bulletin		15 - Interior Trim		Can Perform (where permitted)	
Model Year	Model	Country/Region		Version	
2021	Model S Palladium	United States		All	
The model(s) and model year(s) listed are a general approximation of the affected VIN list. Refer to the VIN/Bulletin Tracker or Customer/Vehicle profile to determine applicability of this bulletin for a particular vehicle.					

Repair Bulletin: This repair bulletin provides instructions on addressing a noted condition or possible customer concern regarding the operation of Tesla vehicles. These instructions should only be performed by trained professionals.

Condition

Some Model S Palladium vehicles were manufactured with center console decor lid latch pins too short to reliably secure the decor lid open.

Correction

Upon customer complaint of a center console decor lid that does not stay open, inspect the vehicle for symptoms related to the condition. If symptoms are present, either replace the latch pin, or replace both the center console decor and latch pin, as necessary.

Correction Description	Correction	Time
SB-21-15-006 Not Applicable	S012115006	0.00
Inspect Decor Lid Latch Pin; Replace Latch Pin	S022115006	0.35
Inspect Decor Lid Latch Pin; Replace Center Console Decor and Latch Pin	S032115006	0.45

	Part Number	Description	Quantity
Parts Required	1613372-00-C	CONSOLE, PUSH PUSH, LATCH PIN	1
If Necessary		One of the following:	1
	1564416-01-A	CONSOLE, DECOR, WALNUT, ASY	1
	1564416-02-A	CONSOLE, DECOR, EBONY, ASY	1
	1564416-04-A	SX, CONSOLE, DECOR, ASY, VRNT, TWL	

These part numbers were current at the time of publication. Use the revisions listed or later, unless otherwise specified in the [Parts Catalog](#).

Procedure

1. Verify the operation of the center console decor lid:
 - The lid stays open – Discontinue this procedure. Delete the activity from the Service Visit, on the condition that this issue might present itself again in the future. Do not use any correction code. Inform the customer that operation of the lid is push open, push close.
 - The lid does not stay open – Continue to the next step.
2. Remove the center console (refer to Service Manual procedure [15192402](#)).
3. Look into the serrated gap of the decor lid to determine the condition of the tang over the decor lid latch pin and if the latch pin is present.
 - If the tang is present and secure (Figure 2), but the latch pin is missing, install an updated latch pin. Skip to step 8.
 - If the tang is present and secure (Figure 2), and the latch pin is present, replace the latch pin with an updated component. Skip to step 5.
 - If the tang is broken off (Figure 3) or damaged in any way, regardless if the latch pin is present, continue to the next step.

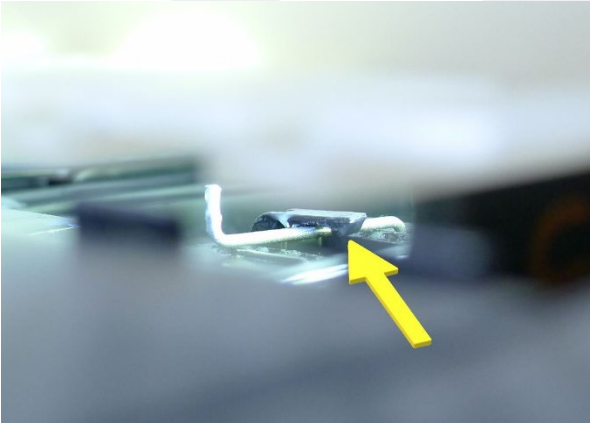


Figure 2 – Tang is present and secure

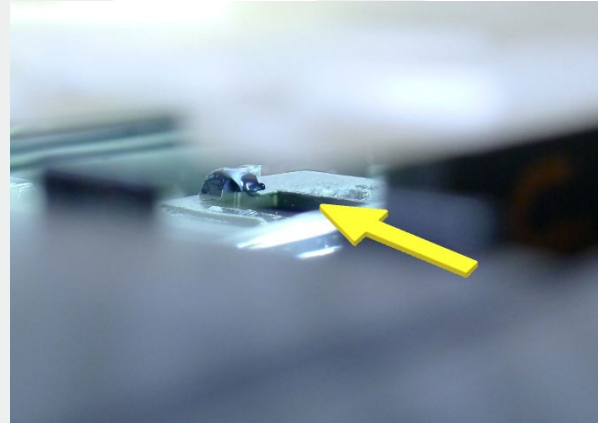



Figure 3 – Tang is broken off

4. Replace the center console decor on the center console (refer to Service Manual procedure [15190042](#)).

 **NOTE:** Do not reinstall the center console at this time.

- From the front of the center console (Figure 4), use needle nose pliers to swivel the latch pin to the left, out from under the tang (Figure 5).

⚠ CAUTION: Swivel the latch pin as far to the left as possible. If not, the tang might break in the next step. If the tang breaks, replace the center console decor as described in step 2 and repeat this step.

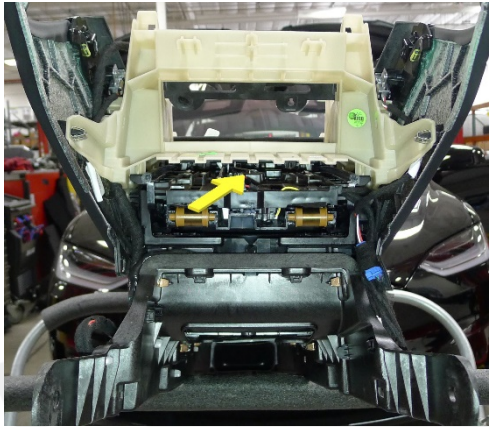


Figure 4

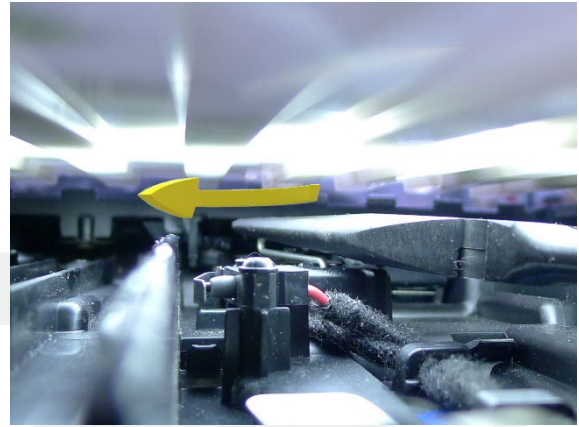


Figure 5 – Swivel fully to the left

- Lift up on the latch pin and separate it from the latch pin boss.
- Remove the latch pin from the center console.
- Set the replacement latch pin in the needle nose pliers so that the pliers grip the long shank of the latch pin, with the shank pointing down (Figure 6).



Figure 6

- Use the needle nose pliers to insert the long shank of the latch pin into the hole in the latch pin boss (Figure 7).

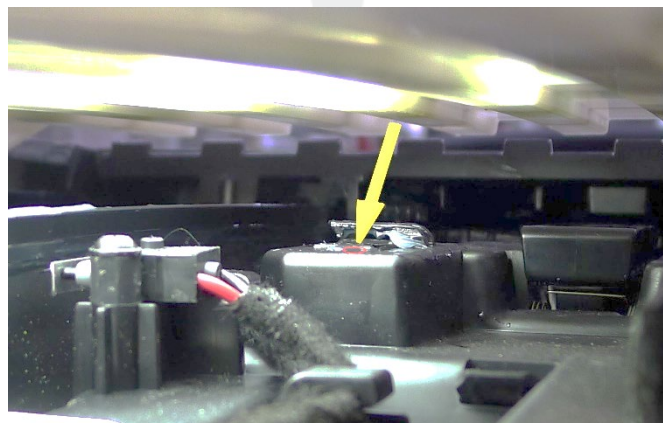


Figure 7

10. Use the needle nose pliers to gently move the latch pin to the left, then back to the right, under the tang (Figure 8).

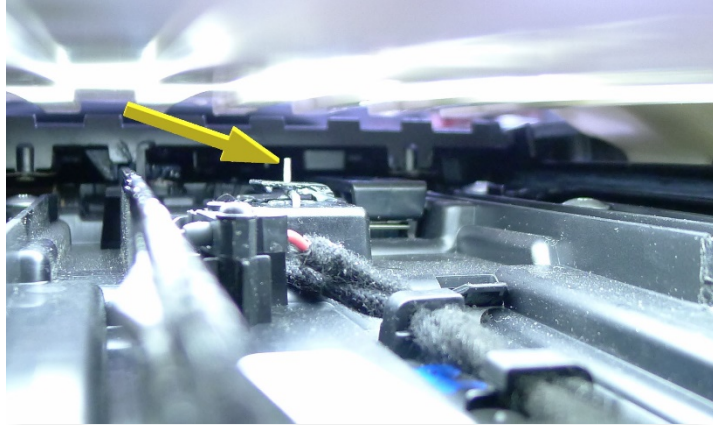


Figure 8

11. Verify the operation of the center console decor lid.

- The lid stays open – Install the center console (refer to Service Manual procedure [15192402](#)).
- The lid does not stay open – Replace the center console decor and latch pin. (Repeat from step 4.)