 Tesla, Inc. Service Bulletin		<i>Inspect Driver and Front Passenger Seat Electrical Harnesses</i>	
SB-21-17-005 December 8, 2021			
Classification		Section/Group	Mobile Service
Repair Bulletin		17 - Electrical	Can Perform (where permitted)
Model Year	Model	Country/Region	Version
2017 - 2019	Model 3	All	All
<small>The model(s) and model year(s) listed are a general approximation of the affected VIN list. Refer to the VIN/Bulletin Tracker or Customer/Vehicle profile to determine applicability of this bulletin for a particular vehicle.</small>			

Repair Bulletin: This repair bulletin provides instructions on addressing a noted condition or possible customer concern regarding the operation of Tesla vehicles. These instructions should only be performed by trained professionals.

Condition

Some Model 3 driver and front passenger seat electrical harnesses might get damaged from repeated fore and aft adjustments to the seat, which will trigger a restraint system alert.


Correction

Upon customer complaint, inspect the vehicle for symptoms related to the condition. If symptoms are present, replace the driver and/or front passenger seat electrical harness(es).

Correction Description	Correction	Time
SB-21-17-005 Not Applicable	S012117005	0.00
Inspect One Front Seat Harness; Replacement Not Needed	S022117005	0.05
Inspect Two Front Seat Harnesses; Replacement Not Needed	S032117005	0.10
Inspect One Front Seat Harness; Replace One Front Seat Harness	S042117005	0.75
Inspect Two Front Seat Harnesses; Replace One Front Seat Harness	S052117005	0.80
Inspect Two Front Seat Harnesses; Replace Two Front Seat Harnesses	S062117005	1.40

	Part Number	Description	Quantity
If Necessary	1489060-02-E	ASY,HARN,1R SEAT,LH,PREM,TOS,SBR,M3/MY	1
	1489060-05-D	ASY,HARN,1R SEAT,RH,PREM,TOS,SBR,M3/MY	1
<small>These part numbers were current at the time of publication. Use the revisions listed or later, unless otherwise specified in the Parts Catalog.</small>			
Special Tools	1133787-00-A	KEY, SEAT BELT RELEASE, MODEL 3	
	1132841-00-A	M3 1R HEADREST REMOVAL TOOL	

Procedure

 **NOTE:** This bulletin addresses restraint alerts “RCM_a021_pretenLapFrontLeft” and “RCM_a022_pretenLapFrontRight” triggered by damage to the front seat pretensioner harness. Perform this procedure on the LH front seat and/or RH front seat, as indicated in the repair order.

1. Move the front seat forward and up, and then remove the screw that attaches the front of the outboard side shield to the seat (torque 4 Nm) (Figure 1).



Figure 1 – LH showm; RH similar

2. Carefully pull on the outboard side shield to release the clip that attaches the side shield to the front seat (Figure 2).


 **CAUTION:** Release the outboard side shield carefully, as an electrical harness is still attached to the side shield.



Figure 2 – LH showm; RH similar

3. Press the brake pedal to turn on the drive rails.

4. Inspect the electrical harness at the front seatbelt pretensioner connector (Figure 3) and look for issues such as kinked wiring, broken wiring (Figure 4), or wiring that is making poor contact with the connector (Figure 5). If the connector lock is not engaged, reseal and lock the connector.

NOTE: If needed, confirm the issue by performing a wiggle test (Figure 6) on the pretensioner electrical connector and check if the “Front left/right safety restraint system fault” alert (Figure 7) appears/disappears from the touchscreen. Intermittent faults indicate harness damage and the need for harness replacement.

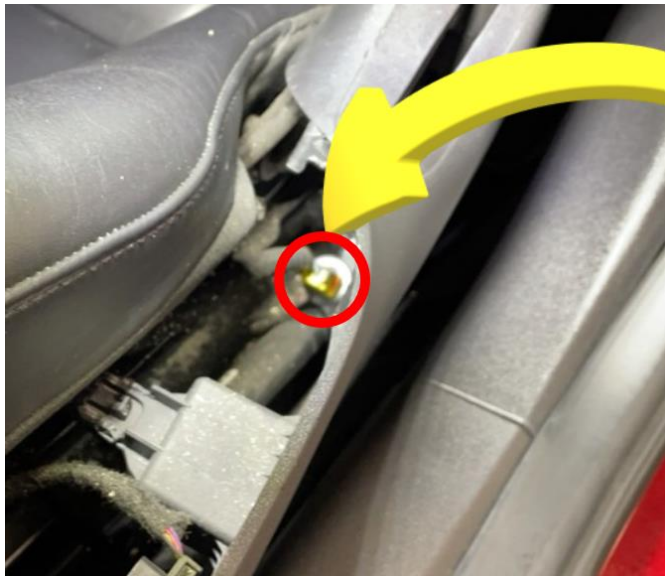


Figure 3



Figure 4

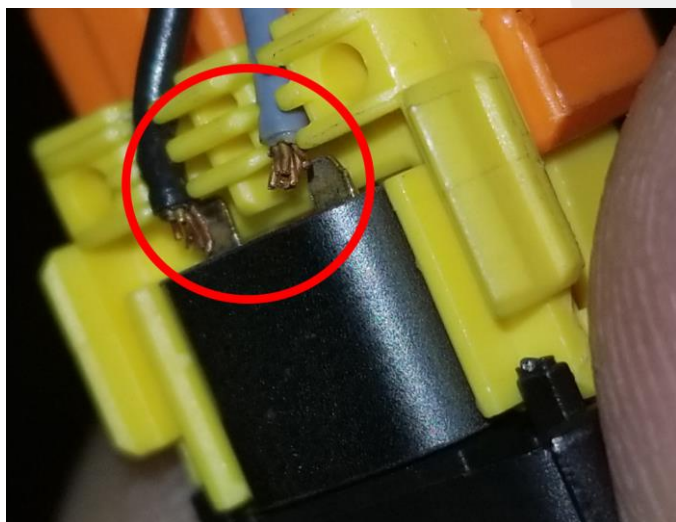


Figure 5



Figure 6

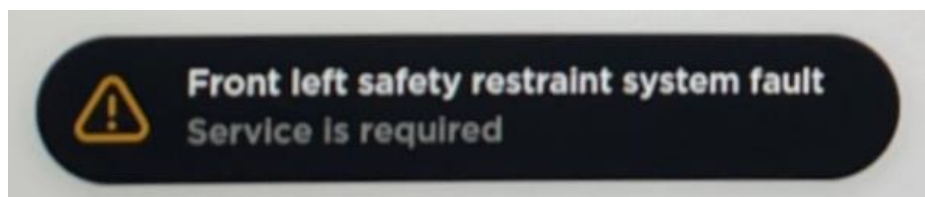


Figure 7

5. Note any damage on the electrical harness and whether replacement is required.
6. If needed, return to step 1 to perform this procedure on the other front seat. After all suspect front seat electrical harnesses have been inspected:
 - Replace the driver and/or front passenger seat harness(es) (refer to Service Manual procedure [17101802](#)).
 - If none of the suspect front seat harnesses are damaged, discontinue this bulletin and continue diagnosis.

