 Tesla, Inc. Service Bulletin		<h2><i>Inspect Curtain Airbags</i></h2>	
SB-21-20-006 October 26, 2021			
Classification		Section/Group	Mobile Service
Recall Bulletin		20 - Safety and Restraint	Can Perform (where permitted)
Model Year	Model	Country/Region	Version
2020 - 2021	Model 3	Denmark, Germany, Norway, South Korea, United Kingdom, United States	All
<small>The model(s) and model year(s) listed are a general approximation of the affected VIN list. Refer to the VIN/Bulletin Tracker or Customer/Vehicle profile to determine applicability of this bulletin for a particular vehicle.</small>			

Recall Bulletin: Recall Bulletins are mandatory service procedures that must be carried out by Tesla-certified Service Centers. Recall work performed by uncertified technicians could lead to unsafe conditions or voided warranty provisions.

Condition

On certain Model 3 vehicles, the LH and/or RH curtain side airbag(s) may have been improperly secured to the interior rail roof during installation.

Correction

Inspect the vehicle for symptoms related to the condition. If symptoms are present, reinstall and re-secure the curtain side airbags to correct specifications.

Correction Description	Correction	Time
Inspect LH And RH Curtain Airbags; Both Curtain Airbags Already Installed Correctly	S012120006	0.55
Inspect LH And RH Curtain Airbags; Reinstall LH Curtain Airbag Correctly; RH Curtain Airbag Already Installed Correctly	S022120006	0.90
Inspect LH And RH Curtain Airbags; Reinstall RH Curtain Airbag Correctly; LH Curtain Airbag Already Installed Correctly	S032120006	0.90
Inspect LH And RH Curtain Airbags; Reinstall LH And RH Curtain Airbags Correctly	S042120006	1.10

Procedure

1. Remove the headliner (refer to Service Manual procedure [15203101](#) or [15203111](#)).
2. Inspect the anti-twist printed lines (Figure 1) along the entire LH curtain airbag, from the bottom of the A-pillar (Figure 2) to the end of the C-pillar (Figure 3). Make sure that the printed lines are parallel and facing the interior cabin.
 - If the printed lines are parallel and facing the interior cabin (Figures 1, 2, and 3), skip to step 5.
 - If the printed lines are twisted (not parallel) (Figures 4 and 5), continue to step 3.

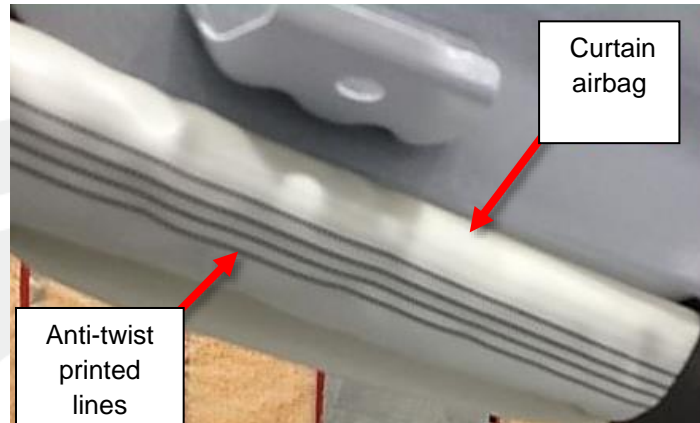


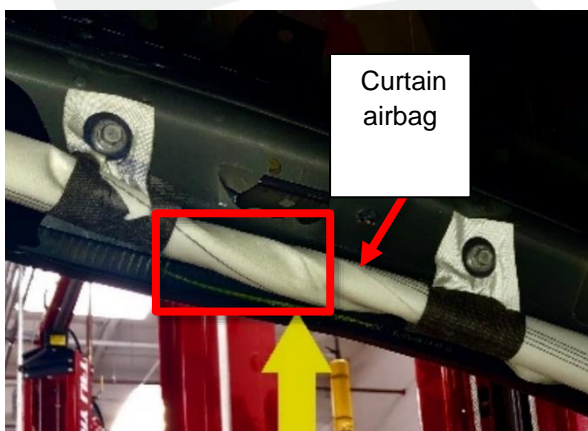
Figure 1 – LH curtain airbag; RH similar



✓ Figure 2 – LH curtain airbag, front view; RH similar



✓ **Figure 3 – LH curtain airbag, rear view; RH similar**



✗ **Figure 4 – Twisted curtain airbag; LH shown, RH similar**



✗ **Figure 5 – Twisted curtain airbag; LH shown, RH similar**

3. Remove the LH curtain airbag (refer to Service Manual procedure [20012002](#)).
4. Adjust the curtain airbag so that the anti-twist printed lines are parallel (Figures 2 and 3), and then continue to step 5

NOTE: Make sure the anti-twist printed lines are lined up correctly as shown (Figures 2 and 3).

5. Inspect the anti-twist printed lines (Figure 1) along the entire RH curtain airbag, from the bottom of the A-pillar (Figure 2) to the end of the C-pillar (Figure 3). Make sure that the printed lines are parallel and facing the interior cabin.
 - If the printed lines are parallel and facing the interior cabin (Figures 1, 2, and 3), no further action is necessary. Continue to step 6.
 - If the printed lines are twisted (not parallel) (Figures 4 and 5), perform steps 3 and 4 for the RH curtain airbag, and then continue to step 6.
6. Install the LH and/or RH curtain airbag(s), if removed (refer to Service Manual procedure [20012002](#)).
7. Install the headliner (refer to Service Manual procedure [15203101](#) or [15203111](#)).