

Model: Model 3

Vehicle System: 11 - Closures

Region: All

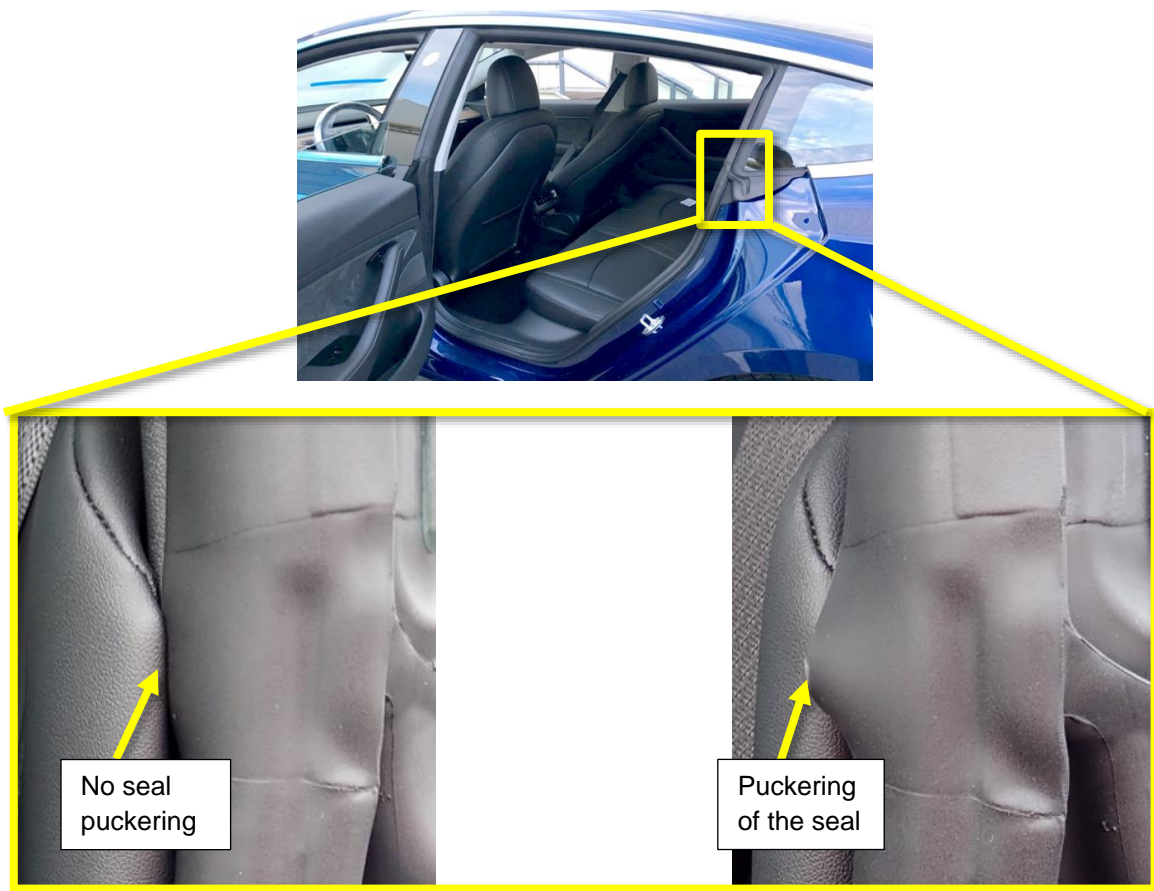
Tech Note: Primary Side Body Seals Installation Guidelines

Tech Notes are announcements that help to communicate and track new information about Tesla Service concerns. Such concerns may or may not be VIN specific. These instructions assume knowledge of motor vehicle and high voltage electrical component repairs, and should only be executed by trained professionals. Tesla assumes no liability for injury or property damage due to a failure to properly follow these instructions or for repairs attempted by unqualified individuals.

This Service Document supersedes TN-18-11-002, dated 3-Jul-18. Each content change is marked by a vertical line in the left margin. Discard the previous version and replace it with this one.

These guidelines explain how to avoid two potential installation issues:

- “Puckering”: A length of seal is compressed into a shorter space. The seal bends and deflects where it should be smooth, and might overlap the trim line (Figures 1 and 2).
- “Void”: A length of seal is stretched over a longer space. The seal pulls away from a corner, leaving a void, or flattens at curved surfaces (Figures 3 and 4).

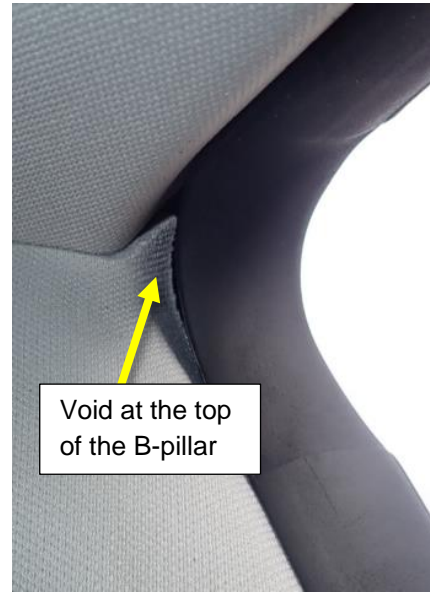


✓ Figure 1

✗ Figure 2



✓ **Figure 3**



✗ **Figure 4**

Follow the procedure in this document to eliminate incorrect body seal fitment.

NOTE: The steps listed below show the LH primary side body seals. The process for the RH seals is the same.

Puckering at the Top Edge of the Rear Primary Side Body Seal

1. Open the LH rear door.
2. Inspect the top edge of the rear primary side body seal (Figure 5):
 - If puckering is present, continue to the next step.
 - If puckering is not present, skip to the “Puckering at the Rear Edge of the Rear Primary Side Body Seal” section of this document.



Figure 5

3. Partially remove the top edge of the rear seal from the door frame (Figure 6).



Figure 6

4. Place one hand on the rear seal near the top of the C-pillar and hold it in place, and with the other hand reinstall the rear seal into the top edge of the door frame, starting with the C-pillar corner and moving towards the front of the vehicle (Figure 7).

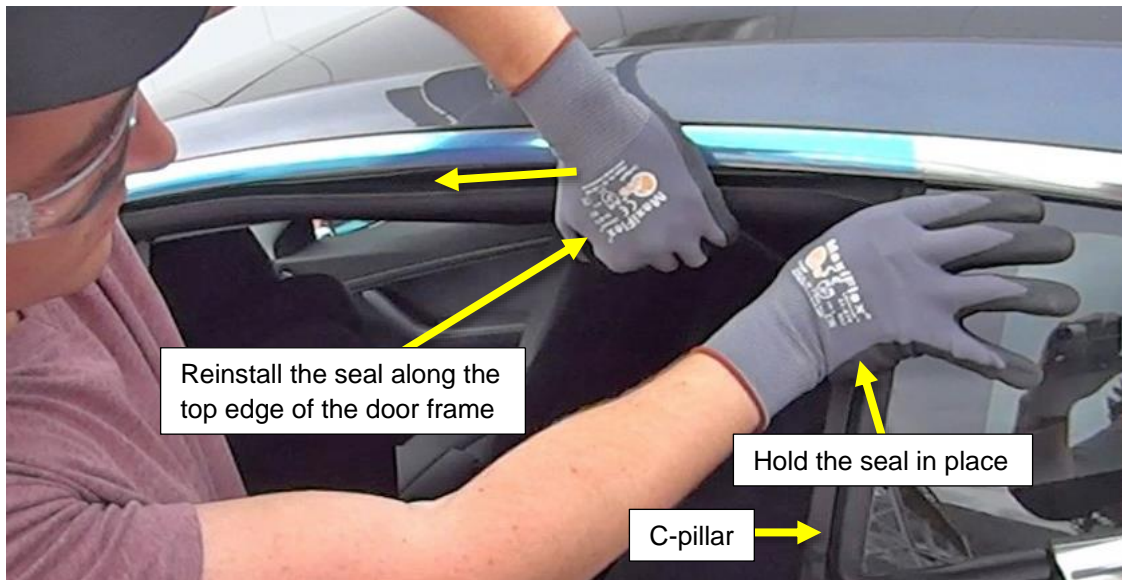


Figure 7

Puckering at the Rear Edge of the Rear Primary Side Body Seal

1. Inspect the rear edge of the rear primary side body seal near the C-pillar (Figure 8):
 - If puckering is present, continue to the next step.
 - If puckering is not present, skip to the “Puckering at the B-Pillar of the Rear Primary Side Body Seal” section of this document.



Figure 8

2. Partially remove the rear seal from the rear and lower edges of the door frame (Figure 9).



Figure 9

3. Pull gently down on the rear seal until the puckering disappears.

4. Reinstall the rear seal into the rear and lower edge of the door frame, starting with the location where the pucker was, and then moving down the rear seal and towards the front of the vehicle (Figure 10).



Figure 10

Puckering at the B-Pillar of the Rear Primary Side Body Seal

1. Inspect the B-pillar edge of the rear primary side body seal, or on the top edge near the B-pillar corner (Figure 11):
 - If puckering is present, continue to the next step.
 - If puckering is not present, skip to the “Puckering of the Front Primary Side Body Seal” section of this document.



Figure 11

2. Partially remove the rear seal from the B-pillar edge of the door frame (Figure 12).



Figure 12

3. Hold the rear seal in place with one hand placed at the corner where the top edge and the B-pillar edge meet, and then reinstall the rear seal into the door frame moving from the top down (Figure 13).



Figure 13

4. Inspect the entire rear seal again, and repeat the reinstallation of the rear seal if puckering is still present.

Inspection of the Front Primary Side Body Seal

1. Open the LH front door.
2. Inspect the entire LH front primary side body seal for any puckering related issues (Figure 14).



Figure 14

Puckering at the A-pillar of the Front Primary Side Body Seal

Inspect the front edge of the front primary side body seal near the A-pillar (Figure 15):

- If puckering is present, continue to the next step.
- If puckering is not present, skip to the “Puckering at the B-Pillar of the Front Primary Side Body Seal” section of this document.



Figure 15

1. Partially remove the front seal from the front and the bottom edges of the door frame (Figure 16).



Figure 16

2. Reinstall the front seal starting with the area just below the A-pillar, work downwards, and then continuing along the lower edge of the door frame (Figure 17).

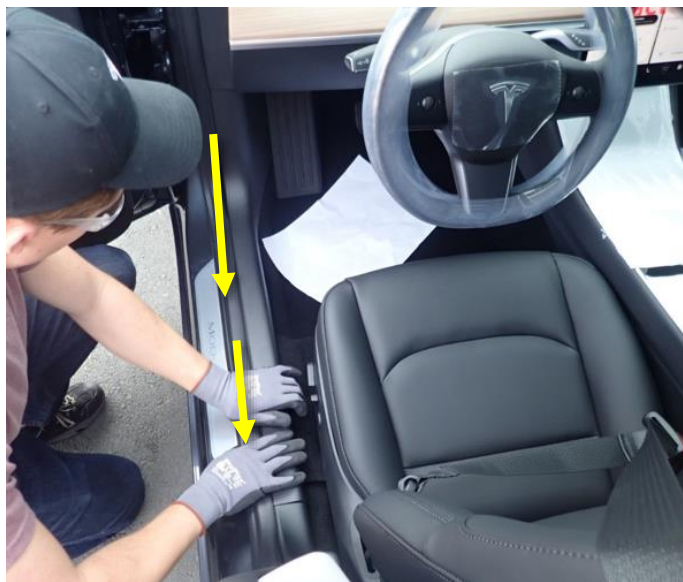


Figure 17

Puckering at the B-Pillar of the Front Primary Side Body Seal

Inspect the top or rear edge of the front primary side body seal at the B-pillar:

- If puckering is present, continue to the next step.
- If puckering is not present, skip to the “Void at the Top Edge of the Front Primary Body Seal” section of this document.

1. Pull the portion of the front seal where the puckering is present, away from the door frame.

- Anchor the front seal in the top corner with one hand, and then reinstall the front seal with the other hand, working away from the corner (Figure 18).



Figure 18

Void at the Top Edge of the Front Primary Body Seal

Inspect the corner between the top edge and the B-pillar edge of the door frame (Figures 19 and 20):

- If the front primary side body seal has a void present, continue to the next step.
- If a void is not present, skip to the "Void at the C-Pillar of the Rear Primary Side Body Seal" section of this document.



✓ Figure 19



✗ Figure 20

1. Partially remove the front seal from the top and B-pillar sides of the door frame.
2. Press the corner of the front seal into place.
3. Anchor the front seal in the top corner with one hand and reinstall the front seal with the other hand, working away from the corner.

Void at the C-Pillar of the Rear Primary Side Body Seal

1. Open the LH rear door.
2. Inspect the entire rear section of the rear primary side body seal for voids near the C-pillar.

NOTE: Pay particular attention to the area circled in Figure 21.

- If the rear seal has a void, continue to the next step.
- If the rear seal has no void, skip to “Void at the B-Pillar of the Rear Primary Side Body Seal” section of this document.



Figure 21

3. Partially remove the rear seal at the upper C-pillar (Figure 22).



Figure 22

4. Crimp the carrier with your fingers (Figure 23). This allows the carrier to sit tighter to the flange on the body.



Figure 23

5. With one palm of your hand on the rear seal at the upper C-pillar, pull on the rear seal and seat it on the flange. Continue seating the rear seal to the flange from the seal at the upper C-pillar to the transition at the seat.
6. Peel back the C-pillar seal, and then push the foam block attached to the trim panel away from the rear seal (Figure 24). Push the rear seal behind the foam block, and then release the block.

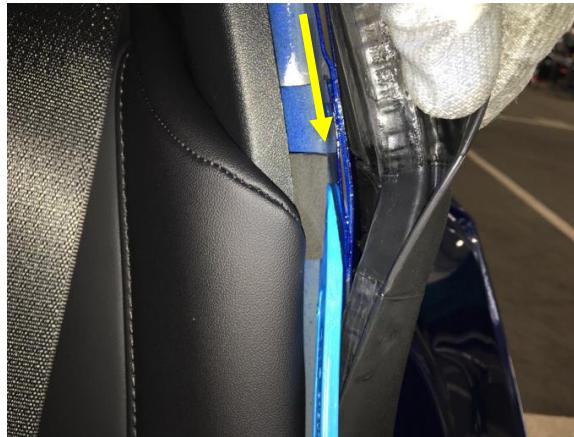


Figure 24

7. Clip in the rear seal (Figure 25), and then reinstall the lip of the rear seal along the interior trim (Figure 26).



Figure 25



Figure 26

Void at the B-Pillar of the Rear Primary Side Body Seal

1. Open the LH rear door.
2. Inspect the entire front section of the rear primary side body seal at the B-pillar for voids.

NOTE: Pay particular attention to the area circled in Figure 27.

- If the rear seal has a void, continue to the next step.
- If the rear seal has no void, skip to “Void at the A-Pillar of the Front Primary Side Body Seal” section of this document.



~~Figure 27~~

- Partially remove the rear seal at the B-pillar, above and below the seal (Figure 28), and crimp the carrier along the rear seal (Figure 29).



Figure 28



Figure 29

- With the palm of your hand on the seal at the upper B-pillar, pull on the rear seal and seat it to the flange. Continue seating the rear seal to the flange until reaching the flat portion of the body on the bottom of the door opening.
- Go over the rear seal with a trim tool, and then reinstall the lip of the rear seal on top of the trim (Figure 30).



Figure 30

Void at the A-Pillar of the Front Primary Side Body Seal

1. Open the LH front door.
2. Inspect the entire front section of the front seal for voids.


NOTE: Pay particular attention to the area circled in Figure 31.

- If the front seal has a void, continue to the next step.
- If the front seal has no void, skip to step 6 at the end of this document.



 **Figure 31**

3. Partially remove the front seal at the lower A-pillar, and then slightly push the front seal up into the A-pillar corner.

 **CAUTION:** Pushing the front seal too hard might cause puckering at the A-pillar.

4. Reinstall the front seal and check for void or puckering (Figure 32).



Figure 32

5. If the void remains visible, perform the following steps:
 - a. Partially remove the front seal at the upper header (Figure 33).



Figure 33

- b. Pull the front seal towards the A-pillar, and then reinstall the front seal from rear to front, pushing material to the front (Figure 34).

⚠ CAUTION: Pushing the front seal too hard might cause puckering at the A-pillar.



Figure 34

6. Inspect for voids or puckering of the front and rear primary side body seals and repeat steps, as appropriate.

For feedback on the accuracy of this document, email ServiceBulletinFeedback@tesla.com.