

Model: Model S, Model X,
Model 3

Vehicle System: 34 - Wheels & Tires

Region: All

Tech Note: ATEQ TPMS Tool Software Update

Tech Notes are announcements that help to communicate and track new information about Tesla Service concerns. Such concerns may or may not be VIN specific. These instructions assume knowledge of motor vehicle and high voltage electrical component repairs, and should only be executed by trained professionals. Tesla assumes no liability for injury or property damage due to a failure to properly follow these instructions or for repairs attempted by unqualified individuals.

Installing the ATEQ TPMS WebVT Program on a Windows PC

This section describes how to download the ATEQ TPMS WebVT software management program to receive the latest vehicle and sensor updates for the TPMS tool.

NOTE: The software installation requires a Windows PC and a file compression/decompression utility such as WinZip or 7-Zip.

IMPORTANT: Temporarily turn off all antivirus and spam blocking software on your computer.

Downloading and Installing the ATEQ Software

Download ATEQ TPMS software for the first time:

1. In a web browser, go to the ATEQ TPMS Tool Product Support page:
<https://www.ateq-tpms.com/en-us/home/support/>
2. Click **Support > Product Support** to go to the product support page.
3. On the Product Support page, select your TPMS tool model: **VT30** or **VT36**

NOTE: The VT30 was discontinued in early 2017. However, ATEQ continues to provide support, software updates, and repairs until early 2022.

4. Click **DOWNLOAD PC SOFTWARE** to retrieve the WebVT software .zip file.

NOTE: Accept any browser prompts to allow the download.

5. Depending on your browser, click on the .zip file to open it or navigate to where the .zip file is stored on the computer, then open it.
6. Double-click the .exe file to start the InstallScript Setup Launcher.

7. Click **Yes** to allow the program to run. The WebVT InstallShield Wizard opens automatically.
8. On the WebVT InstallShield Wizard screen, click **Next**, and then click **Install** (Figure 2).

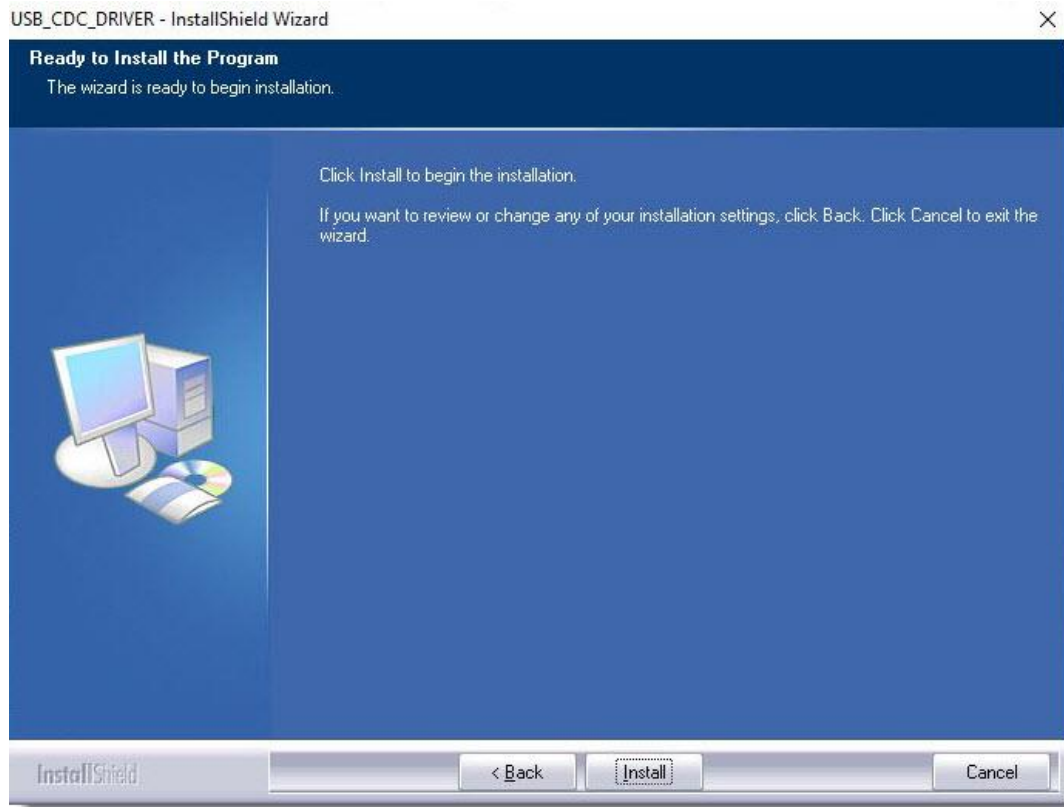


Figure 2: WebVT InstallShield Wizard Screen

9. Follow the Wizard prompts and click **Finish** to complete the installation. The InstallShield Wizard USB_CDC_DRIVER window opens automatically (Figure 3).

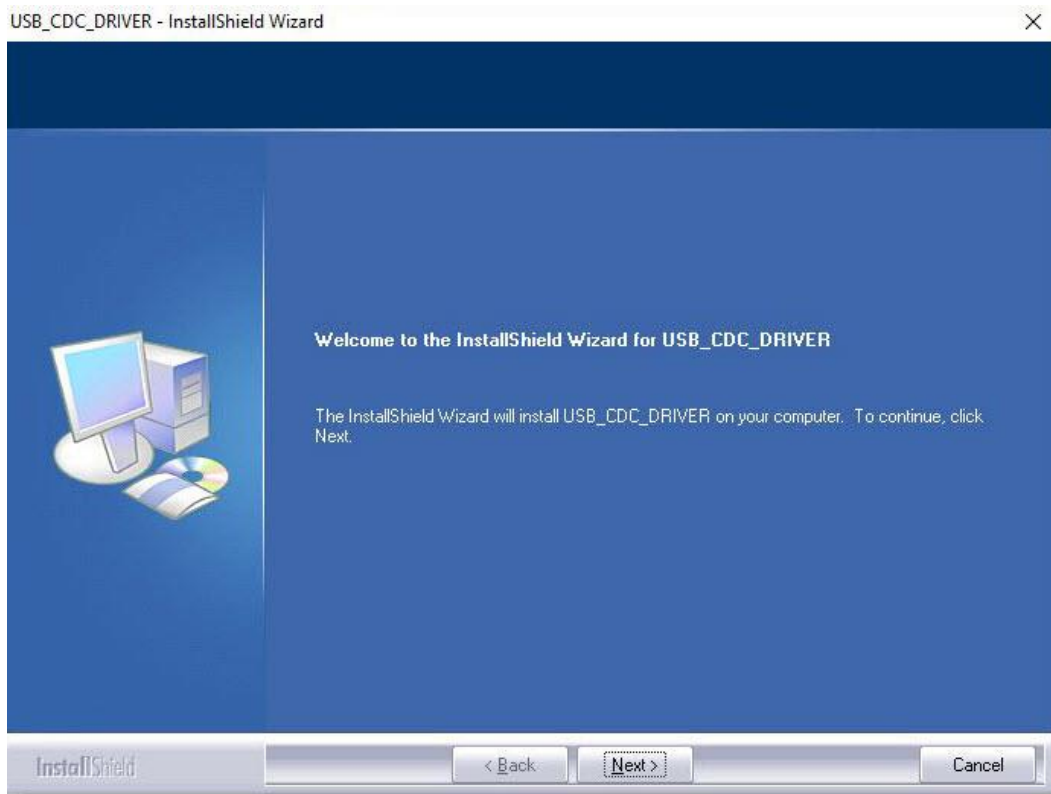


Figure 3: USB CDC Driver InstallShield Wizard Screen

10. In the USB_CDC_DRIVER InstallShield Wizard screen, click **Next**, and then click **Install**. The Serial Emulation Port Driver Installer Wizard opens automatically (Figure 4).



Figure 4: Serial Emulation Port Driver Installer Screen

11. Click **Next** in the Serial Emulation Port Driver Installer window, and then click **Next** to update the device drivers.

12. Click **Finish** to complete the driver installation (Figure 5).

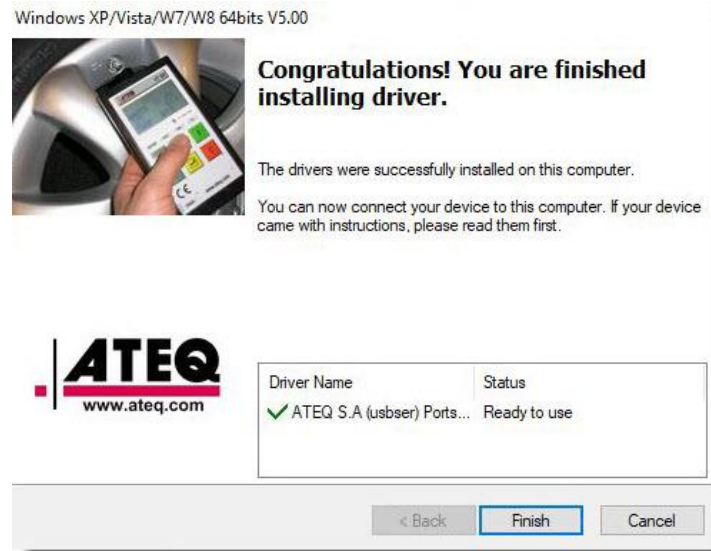


Figure 5: Serial Emulation Port Driver Installation Complete Screen

The WebVT program installation is complete and a shortcut is created on the desktop (Figure 6).

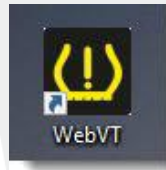


Figure 6: WebVT Desktop Shortcut

13. To update device software, follow the instructions in the next section, “
14. Updating the ATEQ TPMS Tool Software .”

Updating the ATEQ TPMS Tool Software

This section describes how to update the TPMS tool software from the ATEQ TPMS WebVT program.

NOTE: This software update requires a Windows PC with WebVT software installed.

NOTE: Before updating, make sure that the TPMS tool battery is fully charged.

IMPORTANT: Temporarily turn off all antivirus and spam blocking software on your computer.

⚠ CAUTION: Do not disconnect the TPMS tool from the computer or turn off your computer during the update process. This may result in serious damage to the tool.

Procedure

Perform the following procedure to update software on the ATEQ TPMS tool.

1. Power on the TPMS tool in boot mode (loader):
 - VT30 boot mode – Press and hold the **Enter** button, and then press and release the power button.
 - VT36 boot mode – Press and hold the **OK** button, and then press and release the **ON** button.
2. Use a USB cable to connect the ATEQ TPMS tool to the computer.
3. Start the WebVT program on the computer by double-clicking the WebVT shortcut on the desktop.
NOTE: If prompted to register the tool, do not register the tool at this time.
4. Once the WebVT program recognizes the tool connected to the computer, click **UPDATE TOOL** (Figure 7).



Figure 7: Update Tool

5. When the “new version is available do you want to update” message displays, click **Yes**. The update takes several minutes, and the status bar indicates the percentage of update completed.

NOTE: Do not disconnect the ATEQ TPMS tool until the update is complete.

When the update is complete, a message displays on the WebVT My Tools screen: “Your device is now up to date” (Figure 8).

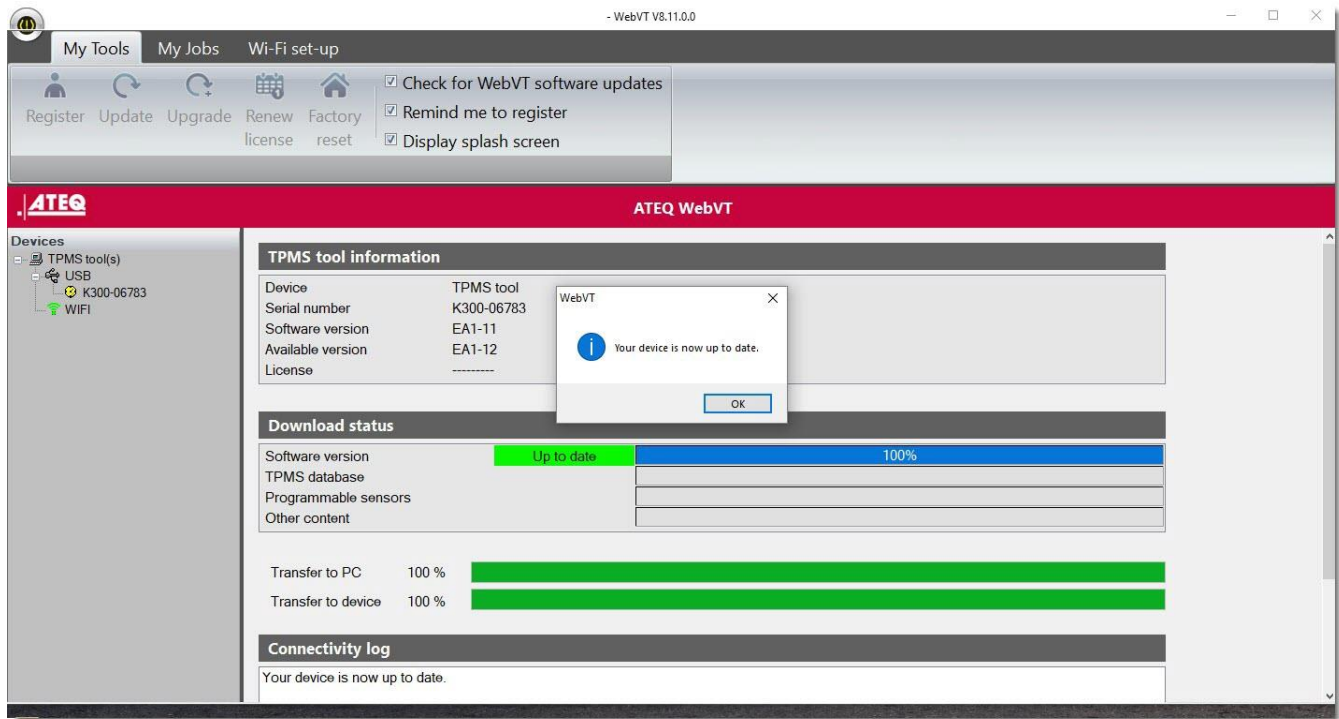


Figure 8: ATEQ WebVT Software Update

6. Click **OK** on the computer and exit out of WebVT.
7. Disconnect the TPMS tool from the computer.
8. Restart the TPMS tool. The updated software version flashes on-screen when the tool boots, then the device Home screen displays.

For feedback on the accuracy of this document, email ServiceBulletinFeedback@tesla.com.