

BROWNIE SUPER 27

www.orphancameras.com

CAMERA



Your Brownie Super 27 Camera equips you for taking pictures anywhere, anytime. This completely new camera features modern styling, built-in flash, 2-position focusing, ratchet knob film advance, and exposure dial.

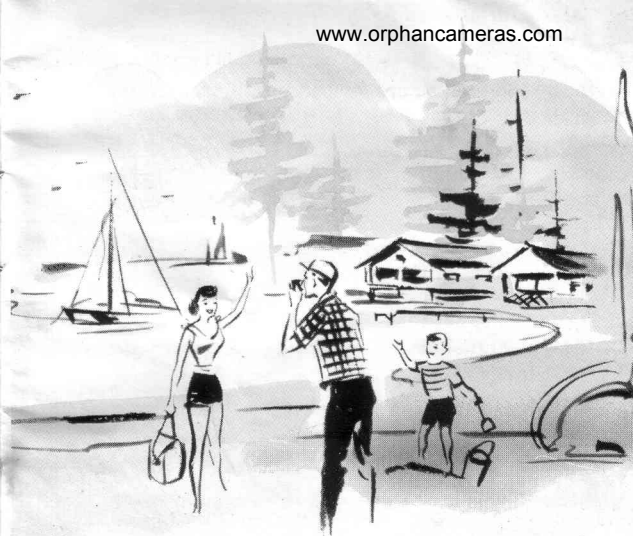
Your camera makes black-and-white snapshots, color snapshots, or color slides, depending on which of three Kodak No. 127 films is loaded in the camera:

KODAK VERICHROME PAN FILM—produces twelve $3\frac{1}{2} \times 3\frac{1}{2}$ -inch standard enlarged black-and-white snapshots.

KODACOLOR FILM—produces twelve $3\frac{1}{2} \times 3\frac{1}{2}$ -inch standard enlarged color snapshots.

KODAK EKTACHROME-X FILM FOR DAYLIGHT, for color slides in daylight or with blue flash bulbs—produces twelve 2x2-inch slides (outside dimensions) with picture area of $1\frac{1}{2} \times 1\frac{1}{2}$ inches.

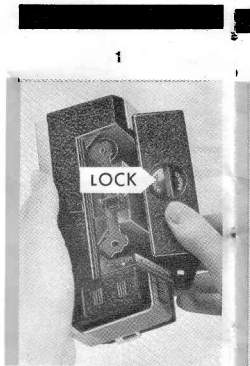
Before any important pictures—a trip or special event—shoot a roll of film and take a few flash shots for practice and a check on your equipment. See your photo dealer for supplies, processing, or prints.



CONTENTS

Films	2
Loading	4
Outdoor Pictures	6
Flash Pictures	8
Unloading	11
Watch Out for These	12
Photo Aids	14
Guarantee	15

- 1** Turn the film compartment cover LOCK counterclockwise as far as it will go ($\frac{1}{4}$ -turn) by rotating the cross-piece with the end of the thumb and forefinger. Lift off the cover.
- 2** The empty take-up spool should be in the WIND KNOB end and engage the wind knob key. If the end-pin of the spool does not engage the key, turn the wind knob until it is seated. Break and remove the sealing band on the roll of No. 127 film; then place it in the film holder, as illustrated, by putting the end-pin of the spool flange in the hole of the spring (pointed out by word LOAD), and pressing out against the spring until the opposite end-pin of the spool can be fitted into its hole at the side of the film compartment.
- 3** Draw the paper, colored side out, over the square opening of the film holder, and thread the paper evenly into the slot of the empty take-up spool. Turn the wind knob two full turns and, at the same time, apply slight pressure on the supply spool so the paper winds straight and tight.
- 4** Replace the film compartment cover, and, while pressing down firmly on the back, turn the



cover lock clockwise, as far as it will go ($\frac{1}{4}$ -turn) to secure it in place. *Check to make certain that the cover is fastened.*

5 Look into the red window on the back of the camera. Turn the wind knob clockwise until the warning arrow appears; then slowly wind until the "1" is centered. The film name precedes each of the 12 numbers. You are now ready for the first picture. The wind knob is of the ratchet type to allow "winding" back and forth as a watch.

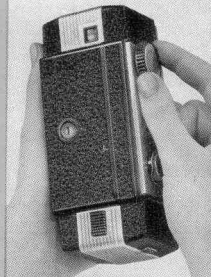
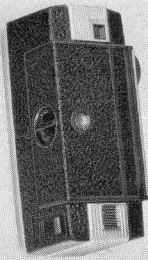
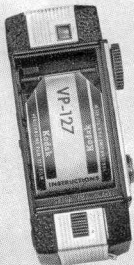
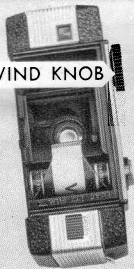
2

3

4

5

WIND KNOB



Take pictures with either black-and-white film (Verichrome Pan) or color films (Kodacolor or Ektachrome-X) with the subject under either sunny or cloudy-bright light conditions. However, the *best* color pictures are made in bright sunlight; the sun should be behind you. Make sure that the flash door is *closed*; thereby, automatically selecting the daylight shutter speed.

In deep shade, take pictures only with flash, and only at close distances—use clear lamps with Verichrome Pan Film; blue lamps with Kodacolor or Ektachrome-X Film, Daylight Type. See page 8 for Flash.

1 Set the exposure DIAL by turning its black, knurled knob to bring the white triangular pointer on the front of the knob as far as it will go in the direction of “SUNNY” or “CL'DY-BR'T” (cloudy-bright)—whichever characterizes the light falling on the subject. This sets the lens opening for proper exposure. *Do not make intermediate settings.*

2 Set the two-position focus by rotating the FOCUSING MOUNT to bring its white triangular pointer opposite the black wedge-shaped index of either:
 “BEYOND 6 FT.”—for subject distances greater than 6 ft.

“CLOSE-UPS”—for subject distances of 3½ to 6 ft.

3 View the picture with your eye close to the square viewfinder eyepiece located on the back of the camera, at the left side.

4 Take the picture by holding the camera steady, and slowly pressing the SHUTTER RELEASE button, as shown in the illustration.

5 Wind the film to the next exposure, overcoming a slight resistance which sets the shutter. You cannot make another exposure until film has been advanced.



NOTE: The most pleasing appearance of the subject's eyes will result when the flash picture is taken in a brightly lighted room, and the subject is not looking directly at the camera.

6 Press the black, ribbed slide, labeled EJECT, on the right back of the camera, in the direction of the arrow to eject used lamps.

CAUTION: Do not touch lamps during or immediately after flashing—they are extremely hot. Since lamps may shatter when flashed, use of the Flash-guard (packed with the camera) over the reflector is recommended. Never flash lamps in an explosive atmosphere.

INDOOR FLASH EXPOSURE TABLE

Film	Flash Bulbs	Exposure Dial Setting	Camera-to-Subject Distance
Verichrome Pan	Clear Bulbs (AG-1)	Flash	6 ft.—18 ft.
		Cl'dy. Br't.*	—
Flash		5 ft.— 8 ft.	
Cl'dy. Br't.*		8 ft.—12 ft.	
Kodacolor	Blue Bulbs (AG-1B)	Flash	6 ft.—10 ft.
Ektachrome-X		Cl'dy. Br't.*	10 ft.—15 ft.

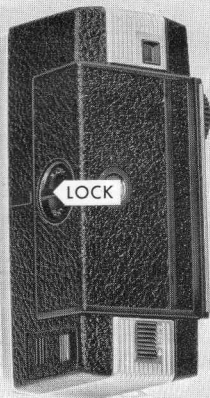
*Although the exposure dial is marked for a FLASH setting, flash pictures can also be made with the **white** triangular pointer as far as it will go toward the CL'DY. BR'T. setting for longer camera-to-subject distances with color films.

UNLOADING

always in subdued light.

- After the 12th picture, turn the wind knob until the end of the paper has passed the red window and is completely wound on the take-up spool.
- Turn the film compartment cover LOCK counterclockwise as far as it will go, and lift off the cover.
- Press the film spool, by its outside flange toward the spring end (outside). Swing out the opposite end of the spool and remove the roll of film.
- Fold under the end of the paper. Seal it with the paper sticker.
- Move the empty spool to the wind-knob end of the camera so that it is ready for reloading.

IMPORTANT: Do not leave exposed film in bright light.



WATCH OUT FOR THESE

You'll take better snapshots if you avoid the six common mistakes described below. Watch out for these when making pictures.

1 CAMERA MOVEMENT, during the exposure, results in a blurred picture. Hold the camera steady and press the shutter release with a slow, steady motion.

2 To avoid pictures with a foggy effect, don't make pictures with a **DIRTY LENS**. Clean your lens with Kodak Lens Cleaning Paper or Kodak Lens Cleaner and a soft lintless cloth.

3 If **YOUR FINGER OR THE NECK STRAP IS IN FRONT OF THE LENS**, you'll get a picture similar to that shown opposite.

4 CLUTTERED BACKGROUNDS — trees, wires, poles — steal interest from the subject. Look beyond the subject before you shoot.

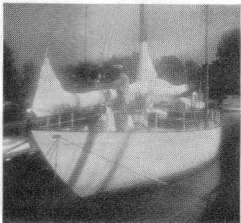
5 SUBJECT MOVEMENT. Don't snap moving subjects unless they are moving slowly and directly toward or away from the camera.

6 SUBJECT OUT OF FOCUS. When your subject is too close to the camera (closer than 3½ ft. at the **CLOSE-UP** setting, or 6 ft, at the **BEYOND 6 ft.** setting), it will appear fuzzy. Set the focusing mount correctly for the camera-to-subject distance.

1



2



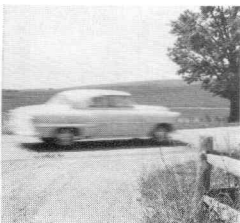
3



4



5



6



- The Brownie Super 27 Field Case will protect your camera. This luxuriously lined, mahogany-colored case has a drop-away front which readies the camera for immediate use.
- “How to Make Good Pictures” is perhaps the most famous and popular picturertaking book of all time. See your Kodak dealer for this and other publications.
- The Kodak Close-Up Attachment, No. 13 can be slipped over the lens for extra-close pictures of people, flowers, etc. With the focusing mount set at CLOSE-UPS, the lens-to-subject distance must be 20 to 40 inches at the “SUNNY” exposure-dial setting; 23 to 33 inches at the CL'DY BR'T setting. See instructions packed with the attachment.
- The Kodak Cloud Filter No. 13 captures fluffy clouds by making the blue sky appear darker. Use it with Kodak Verichrome Pan Film — *never with Kodak color films.*
- The Kodak Readymatic 500 Projector shows you the full beauty of your slides brilliantly projected onto a screen.

See your photo dealer for these and other photo aids.

Camera Features

- FILM** . . . Kodak 127 roll film – negative or transparency size $1\frac{5}{8} \times 1\frac{5}{8}$ inches – 12 exposures per roll
- PICTURES** . . . Standard enlarged color and black-and-white prints $3\frac{1}{2} \times 3\frac{1}{2}$ inches—color slides 2×2 inches (super slides)
- LENS** . . . Kodar – 2-position focusing – “Close-Ups” and “beyond 6 ft.” Two lens openings – for SUNNY ($f/13.5$) and CLOUDY BRIGHT ($f/8$)
- SHUTTER** . . . 2 speeds: flash door closed ($1/80$ sec.), flash door open ($1/40$ sec.)—with double exposure prevention
- VIEWFINDER** . . . Optical – eye level type
- FLASH** . . . Built-in, for AG-1 bulbs; synchronizing shutter speed automatically selected by opening flash door; Flashguard supplied with camera
- NECK STRAP** . . . Adjustable – supplied with camera