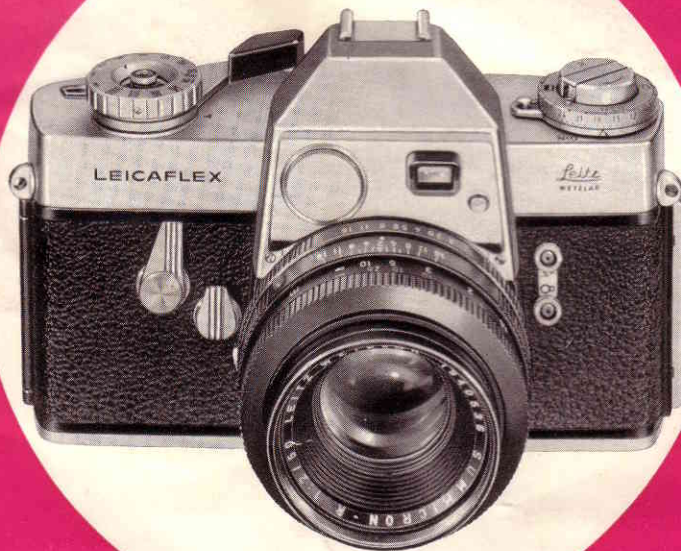


INSTRUCTIONS

Leitz
WETZLAR



LEICAFLEX

11 - 56/Engl.

You are now a LEICAFLEX® owner . . .

. . . and will

instructions

examine yo

The LEICA

easy to op

master this

very quickl

camera co

in these pa

1. Wind shutter fully, then release before loading.
2. Unfold rewind crank and pull up.
3. If necessary, turn take-up spool, using knurled edge, to locate one of loading slits conveniently.
4. Push film leader, shiny side up, into loading slit to depth of first three perforations. Push end of film into slit in direction away from point of white arrow on spool. Edge of film should be against lower flange of take-up spool.
5. Hold take-up spool with right thumb and move film cartridge to left and drop it into film chamber.
6. Using knurled edge, rotate take-up spool to the left to wind on one turn of film; be sure that sprockets engage perforations and that film feeds straight along the film channels.
7. Push rewind crank shaft down.
8. Close camera back and press locking bar downward.
9. Take up slack in film by rotating rewind crank until you feel tension in film.
10. Make two "blind" exposures to advance film to first exposure; be sure that rewind crank knob rotates in direction opposite arrow as you wind.

® = Registered trademark

ERNST LEITZ GMBH WETZLAR

www.orphancameras.com

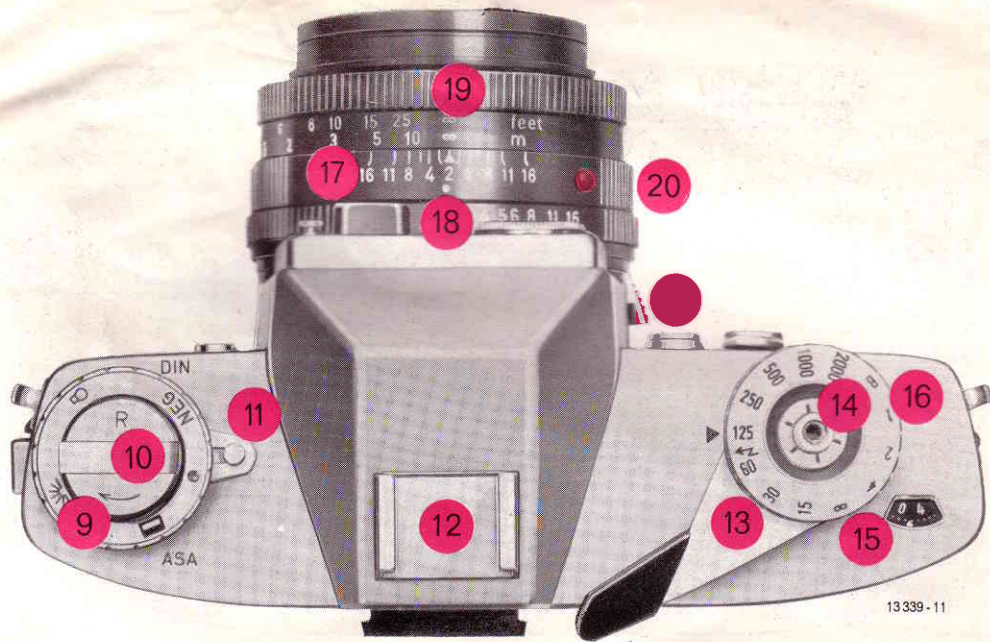
LEICAFLEX parts identification	4—7
Holding the LEICAFLEX	8
The ultra-bright LEICAFLEX viewfinder	9
Focusing	10
Setting the film-speed index	11
The built-in exposure meter	12
Testing and changing the meter battery	13
Control center for the right hand	14
Control center for the left hand	15
The automatic lens aperture	16
The depth-of-field scale	16
Lens changing	17
Series filters and lenshoods	18
The mirror-control lever	19
The self-timer	20
Flash synchronization	20-21
Film loading and unloading	22-23
MACROTAR close-up photography	24-25
Using LEICA® lenses with the LEICAFLEX	26
Caring for your LEICAFLEX lenses	27



13338-11

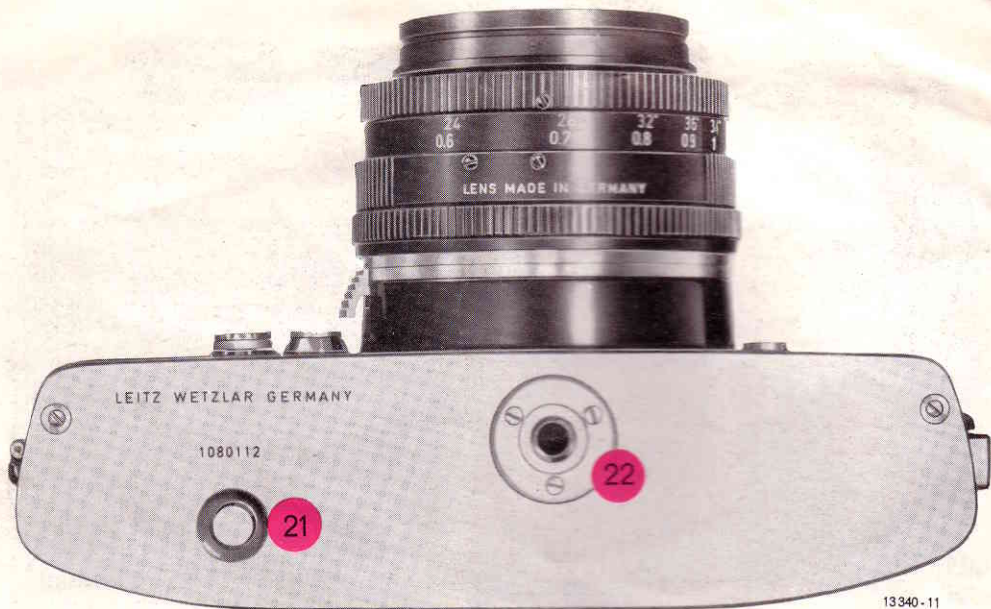
- 1 Strap lugs
- 2 Self-timer
- 3 Mirror control lever
- 4 Lensmount bayonet lock

- 5 Meter battery housing
- 6 Meter window
- 7 Battery-test button
- 8 Twin flash contacts



13339-11

- 4 Lensmount bayonet lock
- 9 Film-type indicator
- 10 Rapid film-rewind crank
- 11 ASA/DIN scale lock
- 12 Accessory shoe
- 13 Rapid transport lever
- 14 Release-button (threaded for cable-release)
- 15 Frame counter
- 16 Shutter speed dial
- 17 Depth-of-field scale
- 18 Auto-aperture preselector ring
- 19 Lens focusing ring
- 20 Raised red dot for lens changing

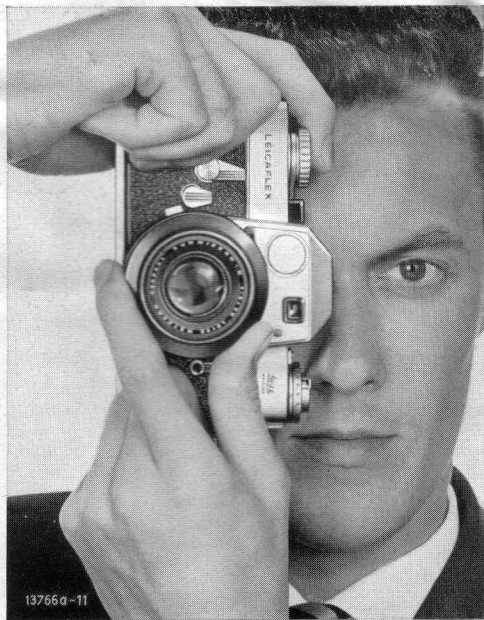
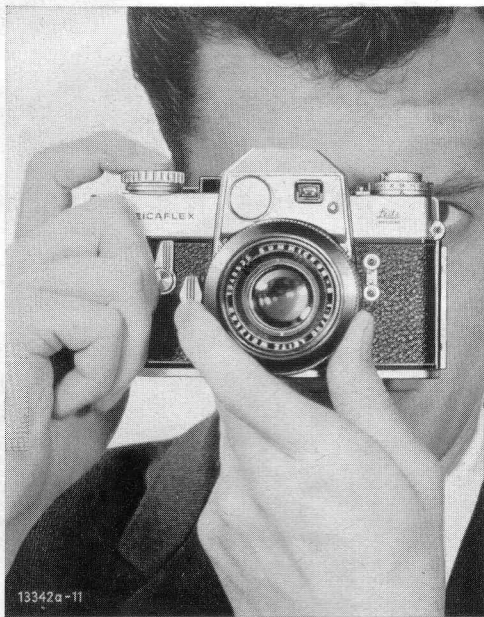


- 21 Film rewind button
- 22 Tripod bushing, 1/4"



13341-11

- 23 Bar-lock for hinged camera back**
- 24 ASA/DIN meter scales**
- 25 Viewfinder eyepiece, with fitting for eyepiece correction lenses**



Holding the LEICAFLEX

For steady three-point support, the right hand grasps that side of the camera, with forefinger on the release button and thumb against the transport lever. The left hand cradles the lens from below, and the forehead presses against the camera back.

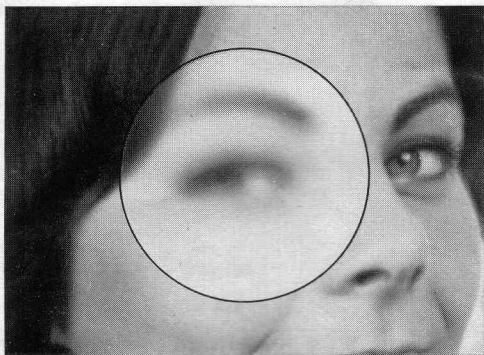
To make vertical pictures, keep both hands in the same positions described for vertical shooting, and simply swing the camera into the vertical position. This keeps you in full command of the LEICAFLEX controls, and your fingers perform the same functions in both positions.

The ultra-bright LEICAFLEX viewfinder



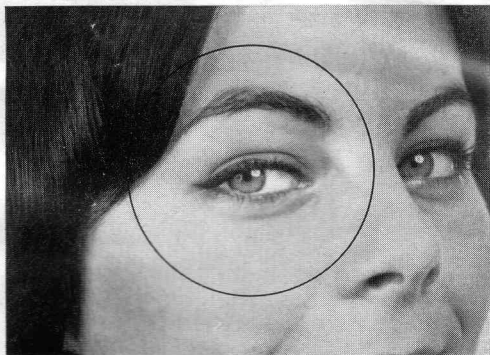
25454-91

Focusing



25455 - 11

Shimmering center-spot = Unsharp



25457 - 11

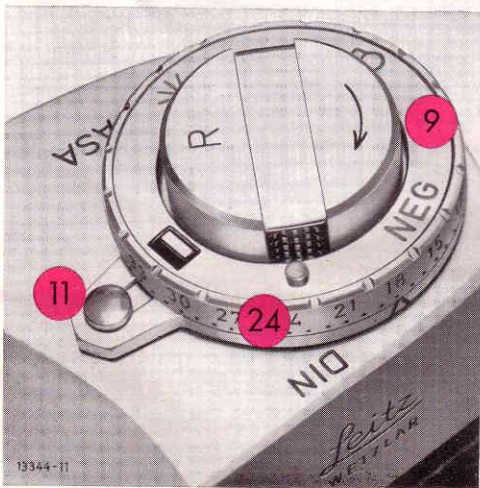
Clear center-spot = Sharp Focus!

The circular focusing-spot in the center of the LEICAFLEX viewing screen is filled with precision micro-prisms which deflect out-of-focus light rays, but do not affect sharply focused images.

When a subject centered within the focusing-spot appears sharp, you will notice that the shimmering texture of the spot disappears. Note also that the double images of subject contours fuse into a single sharp outline when the lens is accurately focused.

Setting the film-speed index

ASA and DIN film-speed indexes are engraved on the scale-ring (24). Holding down the push-button lock (11) permits the scale-ring to be turned to the required ASA/DIN index. The arrow for ASA speeds is at the back of the camera; the DIN arrow at the front.

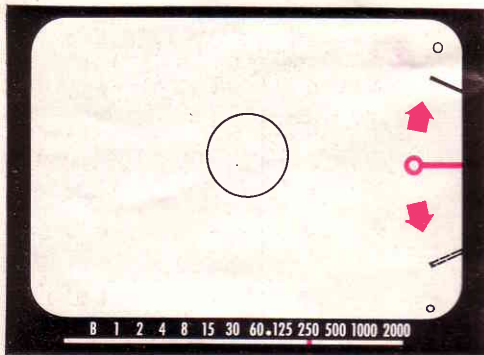


Indexes are engraved from ASA 8 to 6,500 and from DIN 10 to 39. This table shows the ASA values for the dots appearing between engraved ASA indexes:

• = 8	• = 250
• = 10	• = 320
12	400
• = 16	• = 500
• = 20	• = 650
25	800
• = 32	• = 1,000
• = 40	• = 1,250
50	1,600
• = 64	• = 2,000
• = 80	• = 2,500
100	3,200
• = 125	• = 4,000
• = 160	• = 5,000
200	• = 6,500

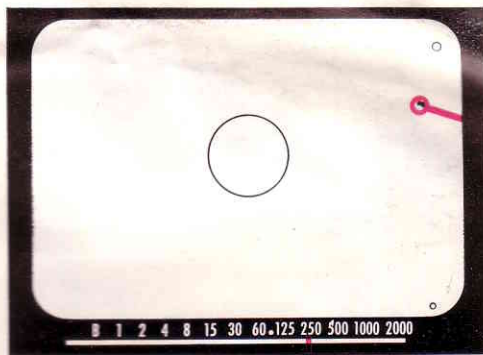
The film-type indicator (9) has symbols for black-&-white film (**black-&-white bars**), daylight color reversal film (**sun**), tungsten-type color reversal film (**lamp**) and negative color film (**"NEG"**). The push-button lock (11) serves as the marker for these symbols.

The built-in exposure meter



Movement of the follow-pointer upward toward the larger circle indicates the setting of a larger lens opening, and downward toward the smaller circle a smaller lens aperture.

The LEICAFLEX exposure meter is cross-coupled so that correct exposure can be set by turning either the lens auto-aperture preselector ring (18), or the shutter speed dial (16). It is usually better to start by selecting an appropriate shutter speed, setting the exposure by means of the lens aperture. The speed scale below the viewing field permits rapid correction without removing the eye from the viewfinder.



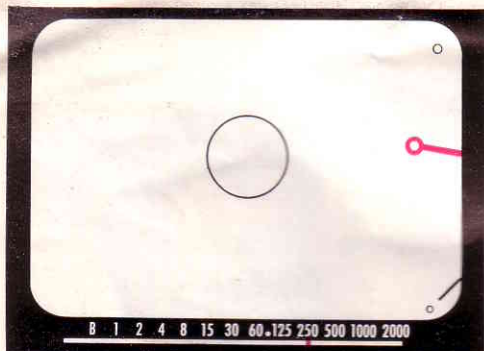
Correct exposure is obtained when the follow-pointer is made to cover the meter needle by turning either the auto-aperture preselector ring of the lens, or the shutter speed selector dial.

Use the focusing-spot to aim the LEICAFLEX meter at an important part of the scene containing a mixture of bright and dark objects.

The LEICAFLEX exposure meter is calibrated for measurements in the horizontal position. For maximum meter accuracy hold the camera horizontally when aligning the follow-pointer over the meter needle.

The meter's measuring field is approximately equal to the viewing angle of the 90mm lens.

Testing and changing the LEICAFLEX meter battery

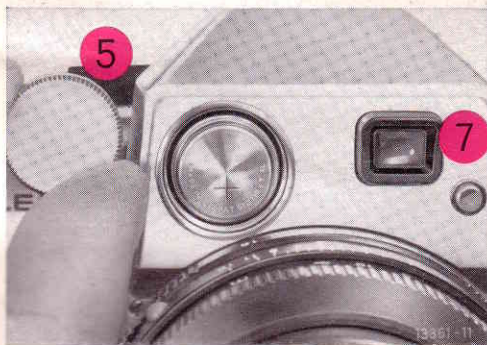


25341-11

The built-in LEICAFLEX CdS exposure meter draws its energy from a **Mallory PX 625 battery (with white ring)**. This battery will normally last for one to two years.

To test the battery,

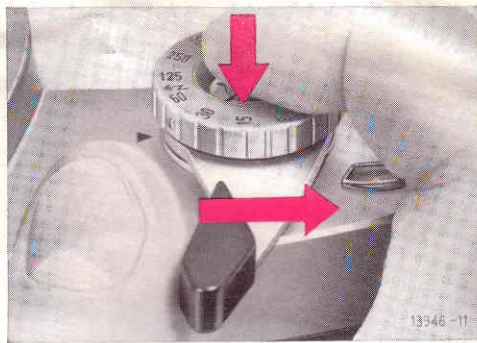
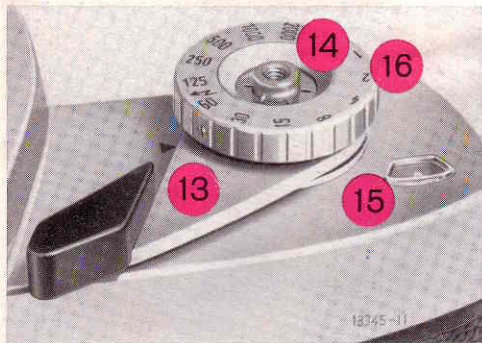
hold the camera horizontally, look through the viewfinder, and press the battery-test button (7) at the front of the camera. If the battery is in good condition, the meter needle will immediately move to the small circle in the lower right-hand corner of the viewing screen



To change the battery,

unscrew the cover-cap (5), gripping it by its milled outer edge, and drop the new battery into position so that the side marked PX 625 + faces upward.

Control center for the right hand . . .



The rapid-transport lever (13)

advances the film and re-sets the camera controls with a single stroke. Leave this lever in its convenient "ready position" when using the LEICAFLEX.

The shutter speed selector dial (16)

provides speeds from 1 to $1/2000$ sec, plus Bulb, and is coupled with the exposure meter follow-pointer. Accurate intermediate speeds can be set at all positions, **except between $1/4$ and $1/8$ sec.** The symbol $\text{⚡} = 1/100$ sec, and is used for synchronizing electronic-flash units.

The release button (14)

is threaded for a standard cable-release such as the LEITZ locking release No. 14067 N, which is used for making Time exposures. Pressing the release starts the following chain of events:

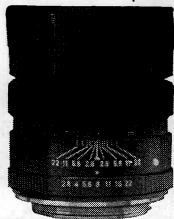
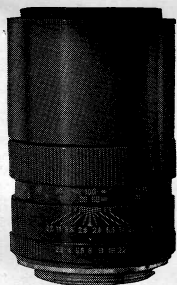
1. mirror swings up,
2. aperture closes down to the preselected value,
3. shutter opens and closes,
4. aperture springs back to its full opening,
5. mirror drops back into the viewing position.

. . . . and for the left hand

All auto-aperture LEICAFLEX lenses have the same control-ring arrangement: The center ring (17), which carries the depth-of-field scale, does not rotate, and is used for lens changing. Nearest to the camera front is the auto-aperture preselector ring (18) that couples with the exposure meter follow-pointer. The forward ring (19) is for focusing, and carries the foot-and-meter distance scales.



13347-11



25338-11

