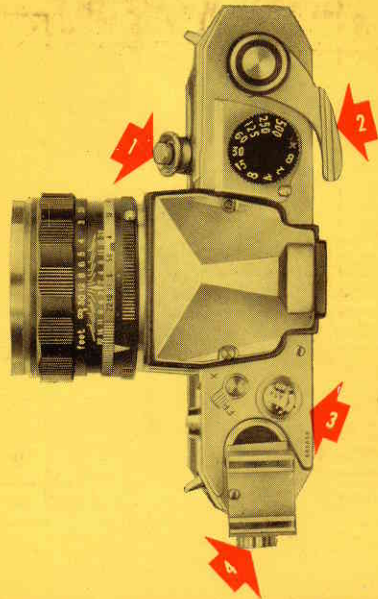


NEW MECHANICAL DEVICE

1. The shutter releasing button is placed on the front of the camera body with an angle of inclination of 30° against the optical axes of the lens for easy shooting and preventing shock of camera body while pressing the button.
2. Automatic single stroke film transport lever is given a play in the range of 15° so as to ease the rapid successive shots.
3. The exposure counter dial will move back to the starting point automatically when the back cover is opened.
4. The handy screw-in accessory shoe can be attached at the side top of the camera body.



PETRI PENTA



F Feet	2	2.8	4	5.6	8	11	16	22
1.75	1.79~1.72	1.80~1.71	1.82~1.69	1.85~1.67	1.89~1.63	1.95~1.59	2.05~1.53	2.20~1.46
2	2.04~1.96	2.06~1.94	2.09~1.92	2.13~1.89	2.19~1.84	2.27~1.79	2.41~1.76	2.61~1.62
2.5	2.57~2.43	2.60~2.41	2.65~2.37	2.70~2.33	2.80~2.26	2.94~2.17	3.19~2.05	3.57~1.92
3	3.11~2.91	3.14~2.87	3.22~2.82	3.31~2.75	3.46~2.65	3.66~2.54	4.08~2.38	4.98~2.20
4	4.18~3.83	4.27~3.76	4.39~3.68	4.57~3.56	4.88~3.39	5.29~3.22	6.21~2.95	8.15~2.68
5	5.29~4.74	5.43~4.63	5.65~4.48	5.95~4.31	6.45~4.08	7.25~3.82	9.09~3.45	13.96~3.09
6	6.45~5.65	6.67~5.49	6.99~5.29	7.46~5.05	8.26~4.74	9.62~4.39	13.33~3.89	30.09~3.44
7	8.77~7.35	9.17~7.09	9.80~6.76	12.05~6.37	12.66~5.86	16.13~5.32	31.14~4.65	∞ ~3.92
12	13.89~10.64	14.93~10.10	16.67~9.43	19.61~8.70	27.03~7.75	50.00 6.85	∞ ~5.71	∞ ~4.78
30	47.62~22.22	58.80~20.41	100 ~17.86	∞ ~15.38	∞ ~12.66	∞ ~10.31	∞ ~7.94	∞ ~5.98
∞	∞ ~83.33	∞ ~62.50	∞ ~43.48	∞ ~30.30	∞ ~21.28	∞ ~15.63	∞ ~10.75	∞ ~7.81

APPLICATION OF THE DEPTH OF FIELD GUIDE



The depth of field is the distance between the furthest and nearest points at which your subject will be in focus.

The depth of focus of any camera will vary according to its focal length, aperture or lens opening and the kind of lenses.

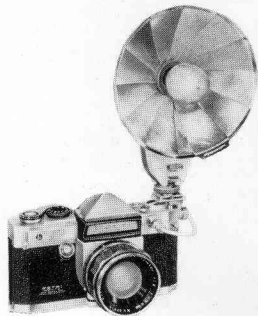
The lens with the shorter focal length will have more depth while the longer focal length will have less. Your PETRI PENTA is engraved with a depth of field scale which will aid you greatly in bringing your subject into proper focus for quick snap shots.

Be familiar with the depth of field scale on your PETRI PENTA as quickly as possible and enjoy its wonderful adaptability.

FLASH PHOTOGRAPHY

The PETRI PENTA is equipped with FP and X synchro-switch. The table opposite shows which synchro-switch setting on the camera, which shutter speeds and which flashbulbs may be combined for maximum lamp efficiency. Unless these combinations are rigidly followed, you will be a failure in flash photography. Taking for an example, when you use Electronic Flash (Strobe) set the synchro-switch on the top cover of the camera to X and at the same time, turn the Shutter Dial to set the speed at X(red). Thus, you can obtain a fully synchronized flash photography.

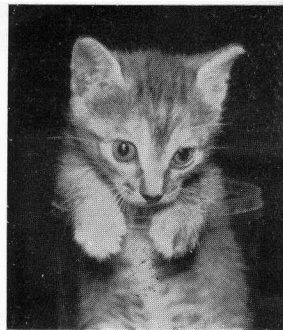
When you use FP class flash bulb, set the synchro-switch to FP and at the same time turn the Shutter Dial to set at whatever the speed higher than 1/60. Thus, you can obtain a full-synchronized flash photography from shutter speed 1/60 up to 1/500 sec.

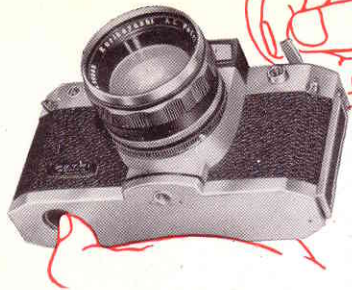


PETRI PENTA



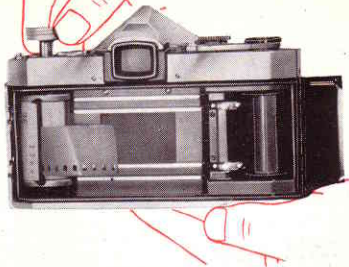
SHUTTER SPEEDS SYN CHRO SOKETS	1	1	1	1	X	1	1	1	1	1	1	B
	500	250	125	60		30	15	8	4	2		
FP	FP Class (Screw base)											
	FP Class (Bayonet base)											
X					F Class							
									M Class			
					Electronic Flash							





RE-WINDING FILM BACK

pull out the rewinding crank handle and rewind the film by pressing the returning button located at the bottom of your camera.



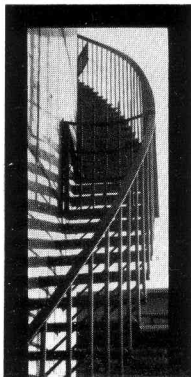
REMOVING FILM

Pull the rewind knob out to remove the cartridge.

HOW TO REMOVE FILM AFTER SHOTS



DEVELOPMENT OF YOUR PICTURES



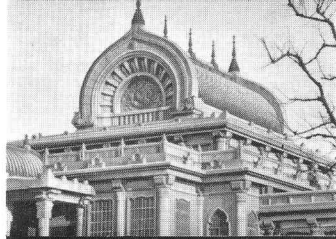
It is important that you develop your film as soon as possible after taking your pictures.

At high temperatures, especially in the Summer your film may spoil if left in an undeveloped condition for too long a time. Be especially careful not to store your undeveloped film in a damp place.

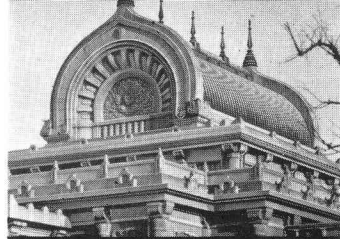
When rewinding the film in the camera do not wind it completely so that the end of the film disappears completely into the magazine, for exposed film wound in this manner is sometimes mistaken for film not yet exposed.



35 mm



105 mm

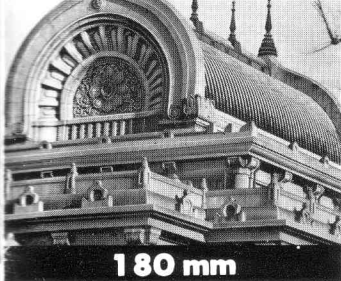


135 mm

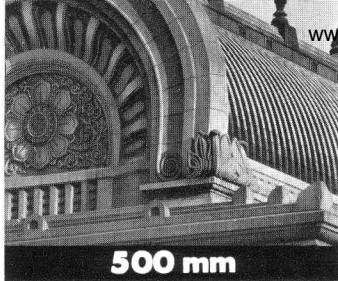
105mm
135mm
180mm
500mm

f- 1:3.5
f- 1:3.5
f- 1:3.5
f- 1:8

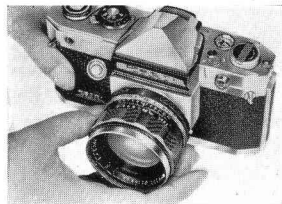




180 mm



500 mm



When interchanging lenses, hold the lens by the focus adjusting helicoid ring shown in photograph.

	Wide Angle 35mm ORIKKOR F3.5	Telephoto 105mm ORIKKOR F3.5	Telephoto 135mm ORIKKOR F3.5	Telephoto 180mm ORIKKOR F3.5	Telephoto 500mm ORIKKOR F8
Construction of lens	5 elements	3 elements	4 elements	4 elements	2 elements
Angle of view	62°	23°	19°	14°	5°
Taking distance	3 feet to inf.	5 feet to inf.	5 feet to inf.	7 feet to inf.	30 feet to inf.
Diaphragm scale	Preset 3.5 to 22	Preset 3.5 to 22	Preset 3.5 to 22	Preset 3.5 to 22	Preset 8 to 22
Length of lens barrel	47.5mm	85mm	83mm	127mm	468.5mm
Gravity	170g	270g	293g	610g	1,300g
Attachment size	Screw-in type 49 P = 0.75	Screw-in type 46 P = 0.75	Screw-in type 62 P = 0.75	Screw-in type 62 P = 0.75	Screw-in type 43 P = 0.75

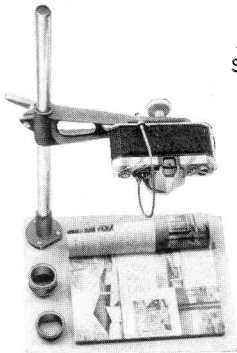
PENTA'S EXTENTION TUBE SET



When you use these PETRI PENTA's rings in between the Standard Lens and camera body, you are able to photograph with PETRI's ORIKKOR 50mm Lens, a subject in about 9cm distance. A ring-set consists of three types; A, B and C. The thickness of A-Ring is 7.5mm, B-Ring 15mm and C-Ring 30mm. You can select the combination of them as you wish. A-Ring is useful for photographing the subject which has a comparatively wide-area such as books. When you use all of A, B & C rings with your PETRI's ORIKKOR 50mm Standard Lens, you will get the picture of 1.05 magnifications of life-size.

PENTA'S COPY STAND

One of the superlative features of Single-Lens Reflex is that it is able to copy easily and accurately. In your collection, add this solidly-built COPY STAND with the excellent stability of support.



AUXILIARY LENSES FOR PETRI PENTA

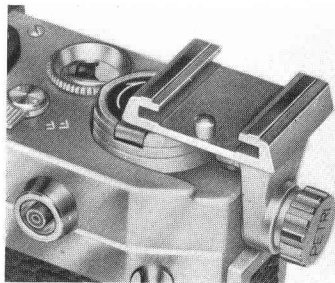
(TELEPHOTO & WIDE ANGLE LENS)



Hard coated, color-corrected precision accessory lenses offer exceptional powerful magnification, superior definition and outstanding contrast. NO ADAPTERS NEEDED: Lenses screw into threaded barrel of standard lens of PETRI PENTA. Each Auxiliary lens for PETRI PENTA is precision tested for mechanical perfection.

ACCESSORY SHOE ATTACHMENT

Sturdy and versatile screw-in type accessory shoe attachment for flash-gun is another PETRI PENTA exclusive!



PETRI HOODS



The PETRI LENS HOOD has been carefully designed to prevent stray light from entering your lens.

It is constructed of light alloy metal and smartly styled to enhance the beauty of the PETRI PENTA.

PETRI FILTERS

In order to insure perfect picture in all kinds of light conditions it is necessary for you to choose the proper filters for your camera. The PETRI FILTERS manufactured of the highest quality optical ingredients and subjected to the most rigid tests are available for your camera.



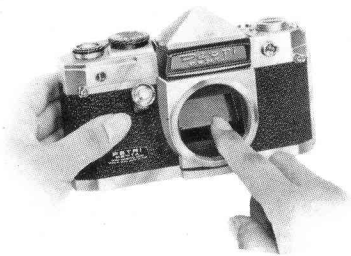


For **BLACK** and **WHITE** pictures

- Y1** - For the landscape with a blue sky as background, portrait, buildings and flowers,
Both are
- Y2** - especially conducive to the subject of moderate and clear contrast.
- YA3** - It darkens sky and makes subject stand up when taking the mountains and a distant view
- R1** - It blackens sky and exceedingly emphasizes subject which is mostly used for taking the pictures from airplane.

For **COLOR** pictures

- PO1** - For the colorful subjects and natural texture skin and complexion.
- UV** - It absorbs the ultraviolet rays.
- W4** - For the bluish subjects or the mountains.
- C4** - Especially be used within 2 hours before and after sunset.
- C8** - It absorbs yellow in using the white flash bulb.
- C12** - For the subjects under the flood lamp or the flood-light (3,200°K)



NOTICE:

Do not touch the mirror. In case any dust caught inside the mirror, just puff it away by a rubber-blower.

