



SIP Trunk Configuration Guide

using



www.simplesignal.com

1-800-873-7670

The information contained in this document is specific to setting up SIP connections between SBX IP 320 and SimpleSignal. If you require assistance with this application, please contact Vertical Customer Support.

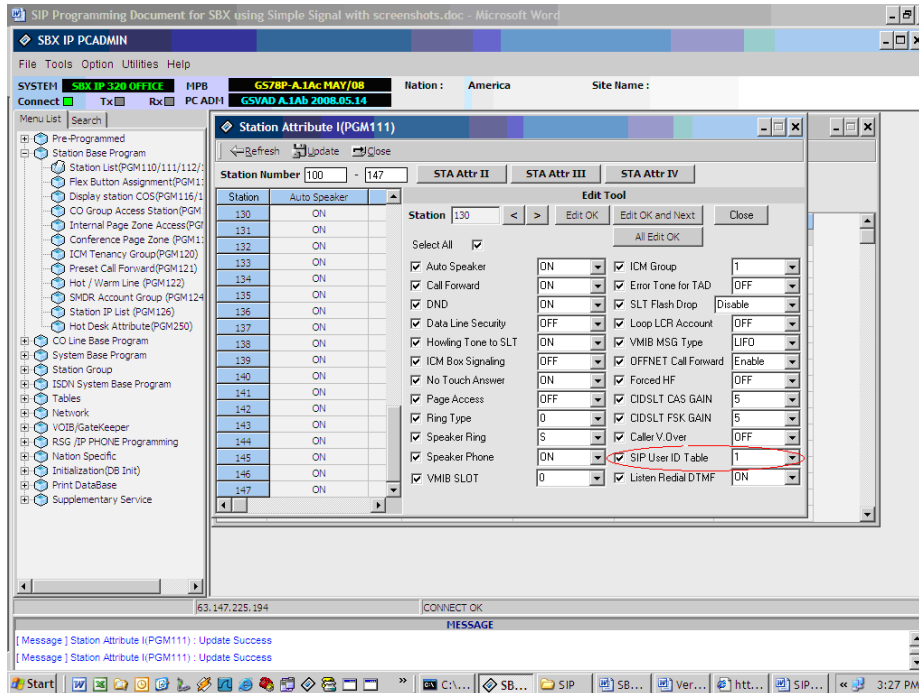
SimpleSignal SIP Trunk Configuration

SIP Trunk Setup

> PC Admin is required to completely integrate SIP trunking with the SBX system.

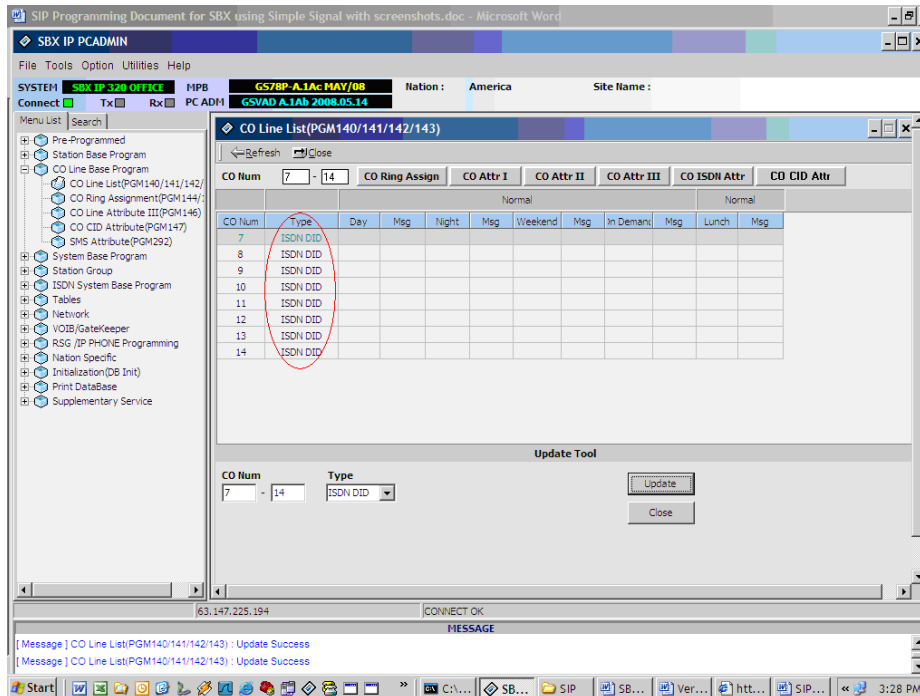
After starting the PC Admin program, select the program settings from the Menu List tab as indicated in Steps 1-9 for the SBX system to work with the *SimpleSignal* SIP trunks.

- 1.) **Station Attribute 1 (PGM 111)** – Program the SIP User ID Table that will correspond with the SIP account (programmed later in SIP Attributes 2).

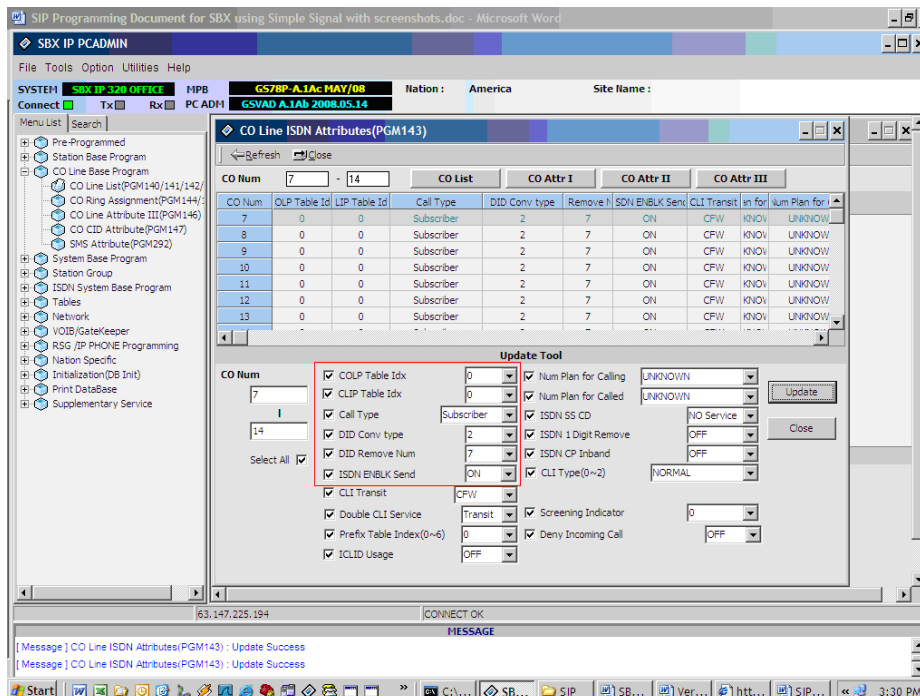


SimpleSignal SIP Trunk Configuration

- 2.) **CO Line List (PGM 140)** – If the SIP carrier will be providing DID (direct inward dialing) trunks, program the VoIB trunks used for SIP integration as ISDN DID.

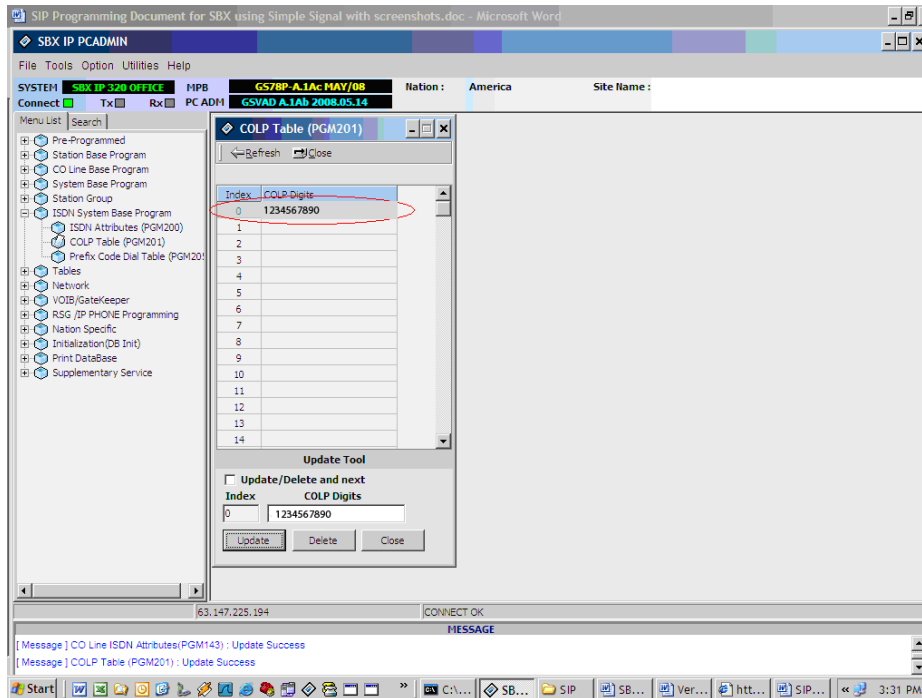


- 3.) **CO Line ISDN Attributes (PGM 143)** – Set the COLP and CLIP Table Idx fields to 0, set the Call Type to Subscriber, the DID Conv Type to 2 (for integration with Flexible DID Table, PGM 231), set the DID Remove Num to 7 (or other entry if the carrier is sending more than 10 digits), and turn ISDN ENBLK Send to On.

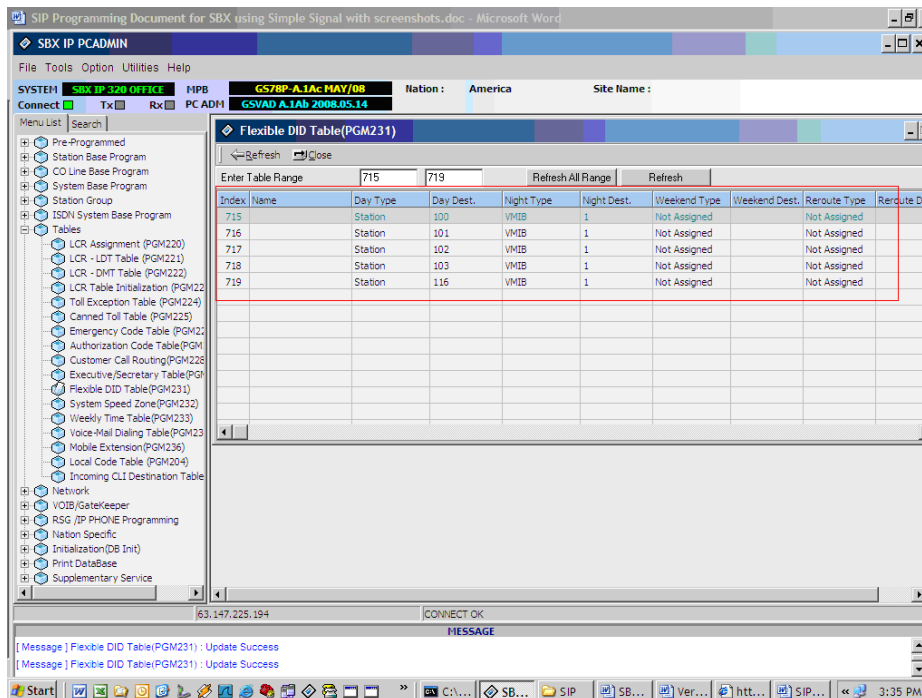


SimpleSignal SIP Trunk Configuration

- 4.) **COLP Table (PGM 201)** – Enter the COLP digits in Index 0 (this will correspond with PGM 143 buttons 1 and 2). The COLP digits will most likely be the same as the Authorization User Name in SIP Attributes 2.

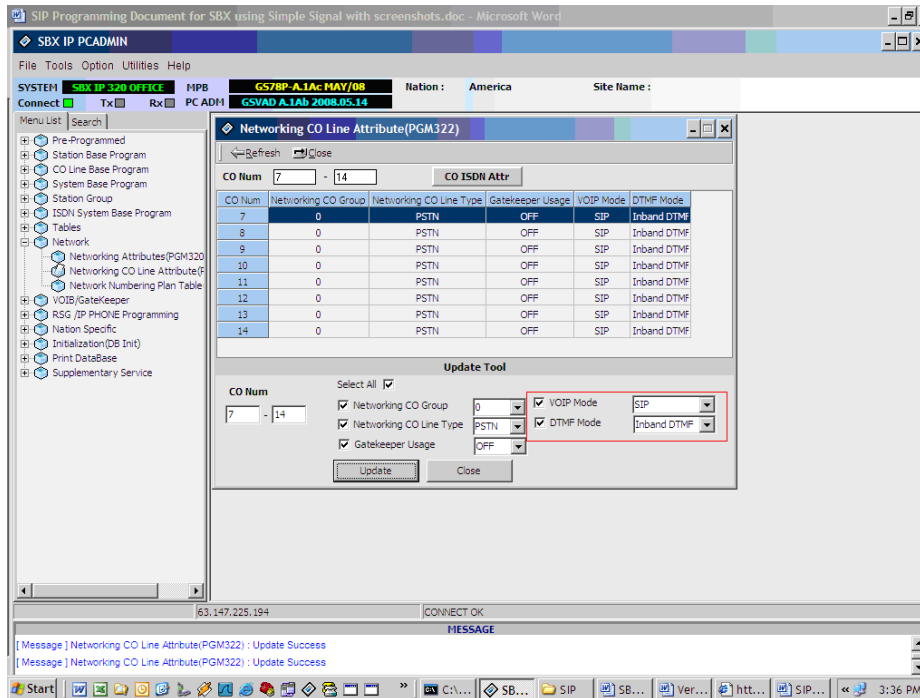


- 5.) **Flexible DID Table (PGM 231)** – Program the ring assignments for the DID routes in this area. Use the last 3 digits of the inbound numbers that the SIP carrier provides as the table numbers.

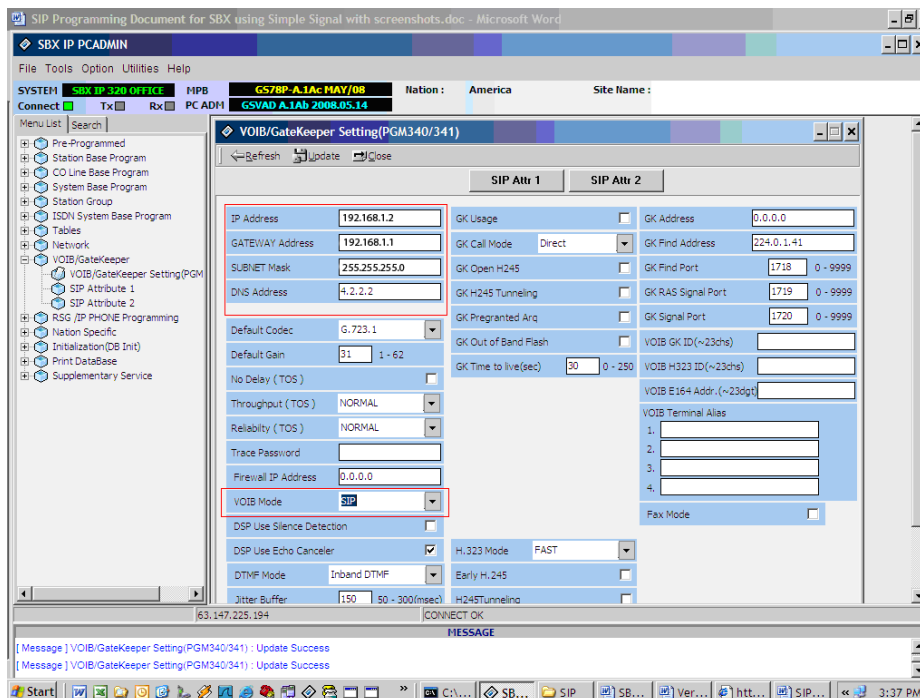


SimpleSignal SIP Trunk Configuration

- 6.) **Networking CO Line Attribute (PGM 322)** – Enter the VoIB trunks used for the SIP integration. Set the Networking CO Group to 0, the Networking CO Line Type to PSTN, Gatekeeper Usage to Off, VoIP mode to SIP, and program DTMF Mode to Inband DTMF, unless the carrier requires 2833.

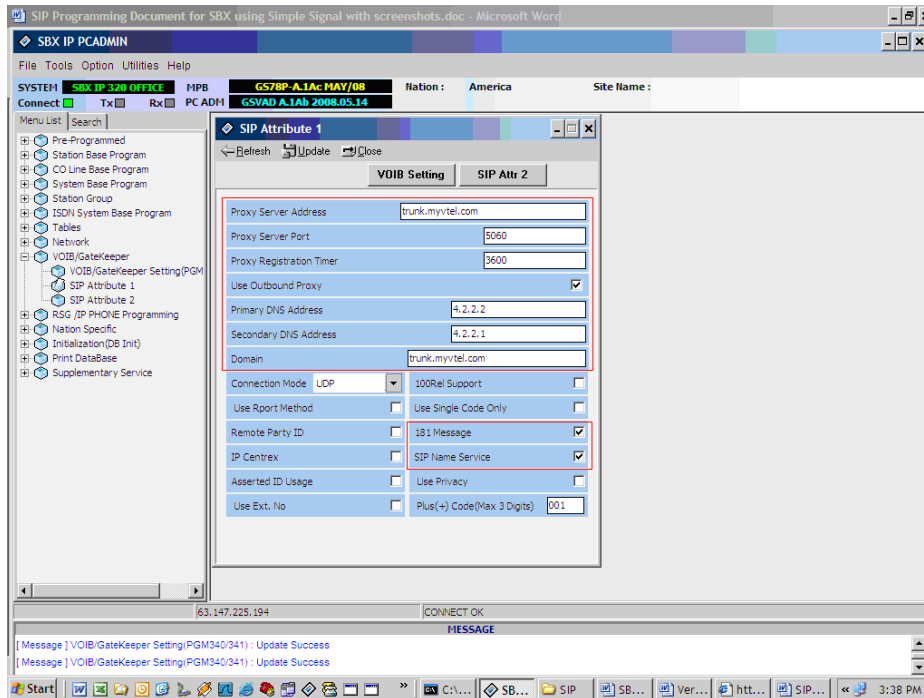


- 7.) **VoIB/Gatekeeper Setting (PGM 340)** – Program the IP Address, Gateway Address, Subnet Mask for the VoIB card. Set the VoIB mode to SIP unless the system is networked with another system, if so, use the DUAL option. Program the DTMF Mode so it matches the same field in PGM 322.



SimpleSignal SIP Trunk Configuration

- 8.) **SIP Attribute 1** – Program the Proxy Server Address, Proxy Registration Timer, Use Outbound Proxy check box, Primary and Secondary DNS Addresses, and Domain provided by the SIP carrier. Enable the remaining checkboxes (Remote Party ID, Asserted ID Usage, 100Rel Support, etc) if the SIP carrier requires them.



SimpleSignal SIP Trunk Configuration

- 9.) **SIP Attributes 2** – Enter the User ID, Authentication User Name, Authentication User Password, and repeat the Authentication User Password. The contact number might have to be added depending on what the carrier expects. Set User ID Registration to Register if the SIP carrier expects a registration packet from the SBX system. Check the User ID Usage box. If the carrier does not want a registration packet from the SBX, set this field to Provision.

The screenshot displays the SBX IP PCADMIN software interface. The main window shows the configuration for SIP Attribute 2. The interface includes a menu list on the left, a main configuration area with a table of SIP attributes, and an 'Update Tool' dialog box for editing attribute 1. The table shows columns for Index, User ID, Authentication User Name, Authentication User Password, Contact Number, and User ID. The 'Update Tool' dialog shows fields for Index, Contact Number, User ID Registration (set to Register), User ID Usage (checked), Asc Stn, User ID, Authentication User Name, Authentication User Password, and Authentication User Password Repeat.

Index	User ID	Authentication User Name	Authentication User Password	Contact Number	User ID
1	1234567890@trunk.myvrtel.com	1234567890	123456	1234567890	Register
2					Provision
3					Provision
4					Provision
5					Provision
6					Provision
7					Provision
8					Provision
9					Provision
10					Provision
11					Provision
12					Provision

Update Tool

Index: 1 Contact Number: 12345678 User ID Registration: Register User ID Usage Asc Stn: 100

User ID: 1234567890@trunk.myvrtel.com Authentication User Name: 1234567890

Authentication User Password: 123456 Authentication User Password Repeat: 123456

This completes the SIP Trunk configuration process. If you have any other questions, please contact Vertical Customer Support for assistance.